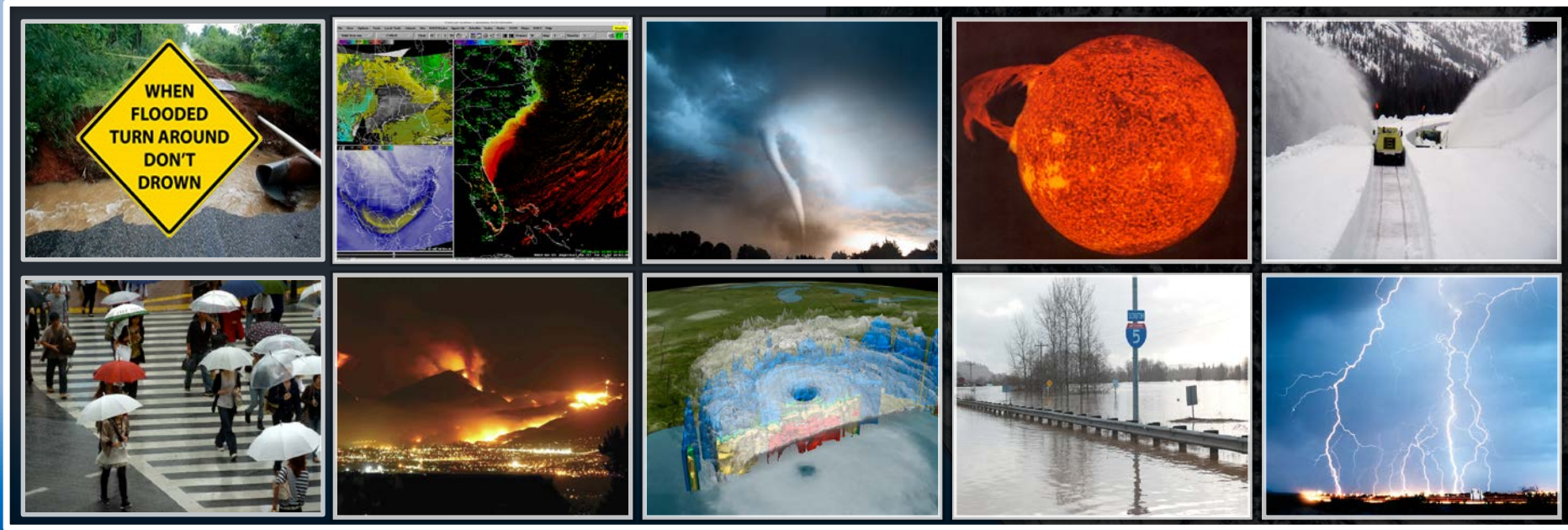
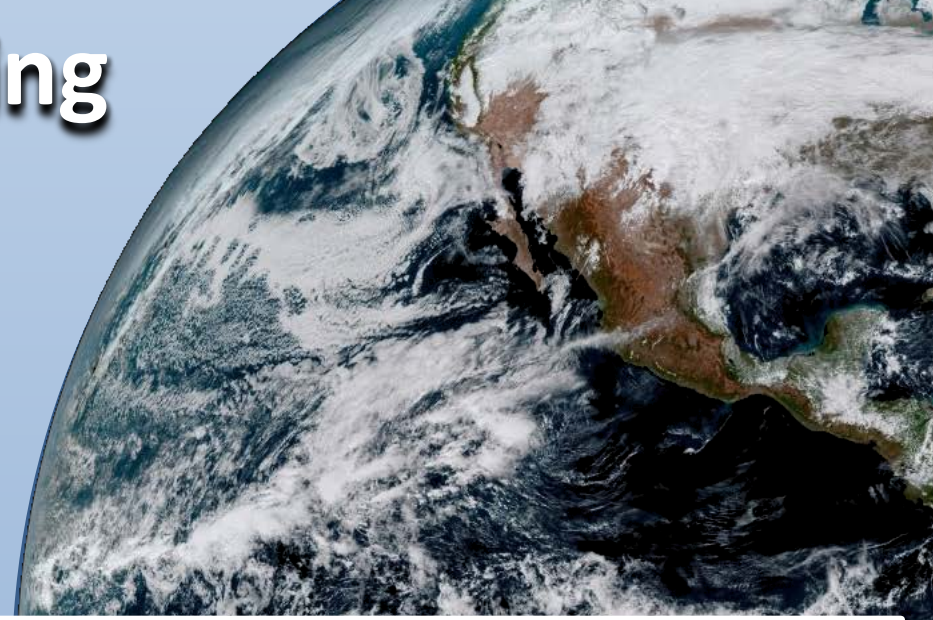
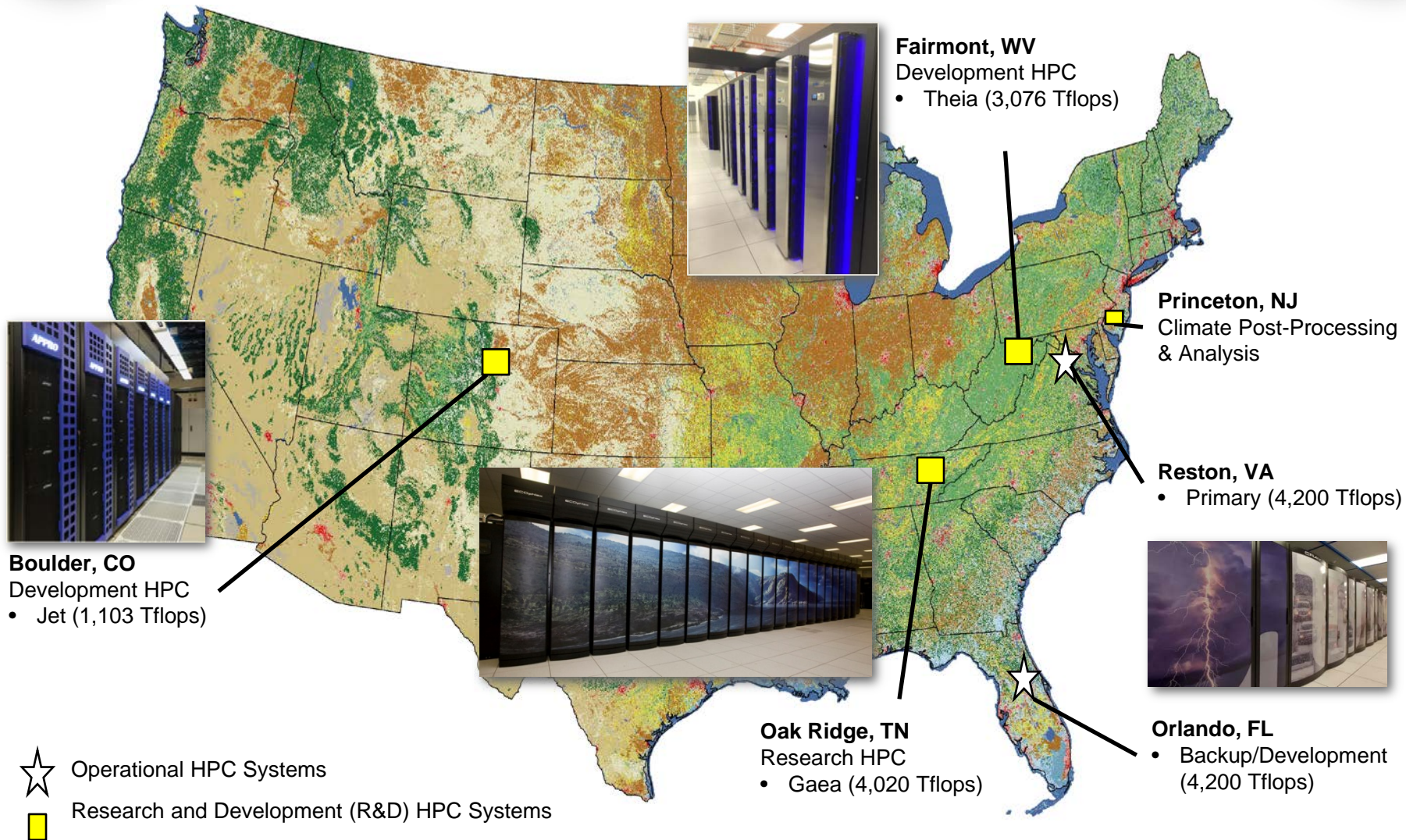


NWS Central Processing Update

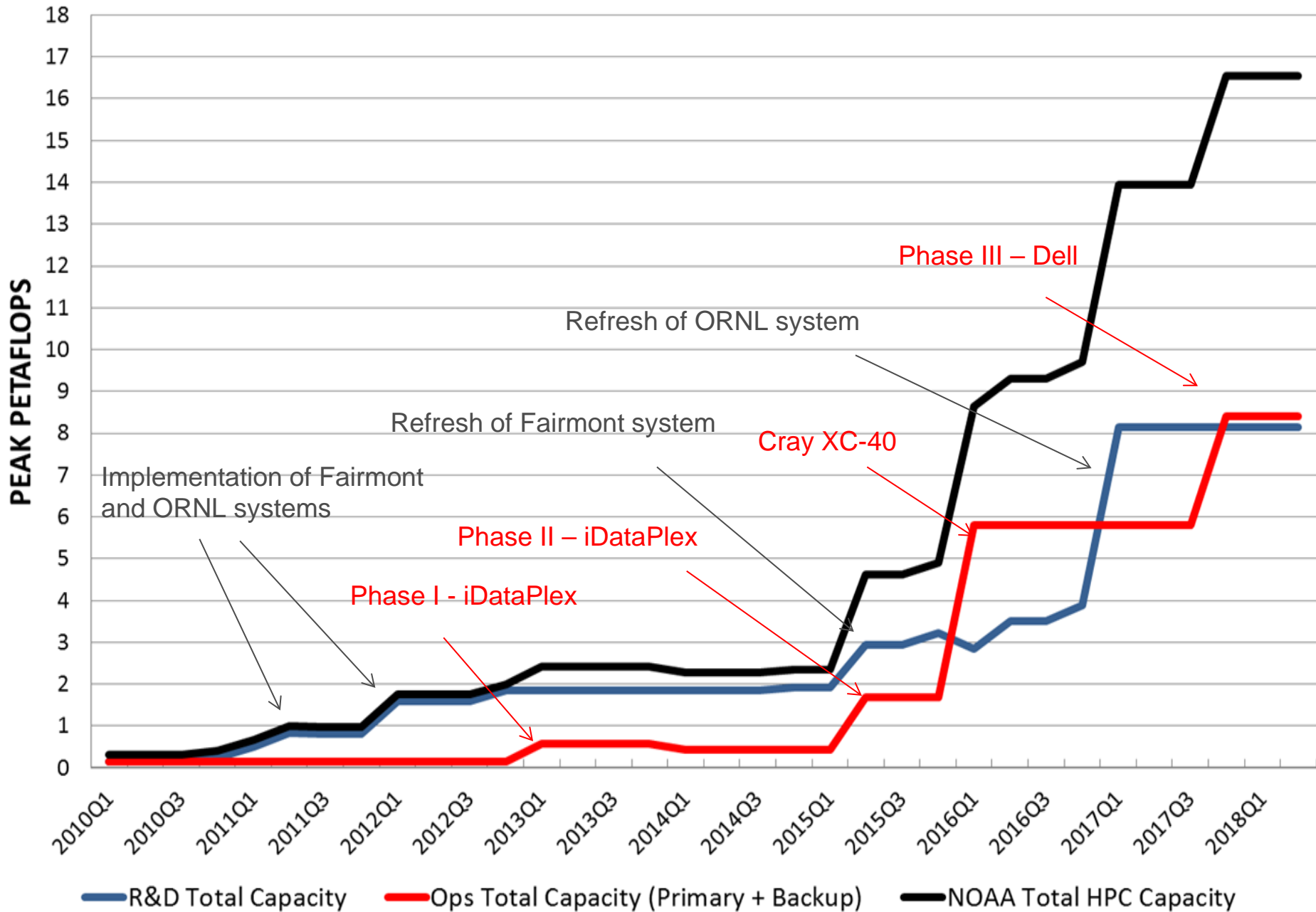
David L. Michaud, NWS Central Processing
January 11, 2018 • Austin, TX



NOAA's High Performance Computing Locations and Systems



NOAA's High Performance Computing Capacity



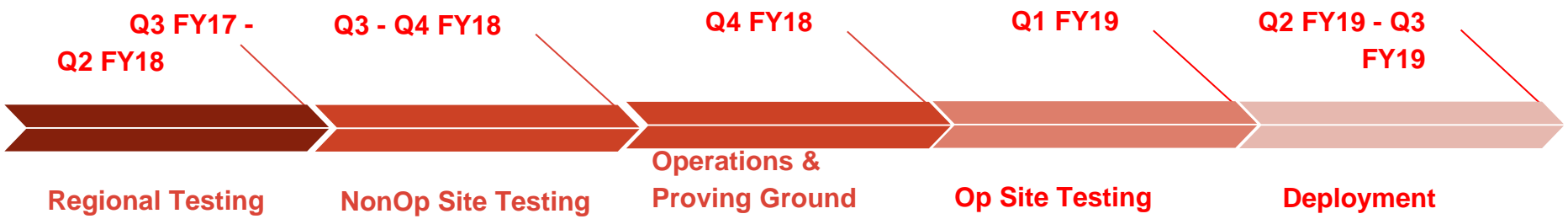
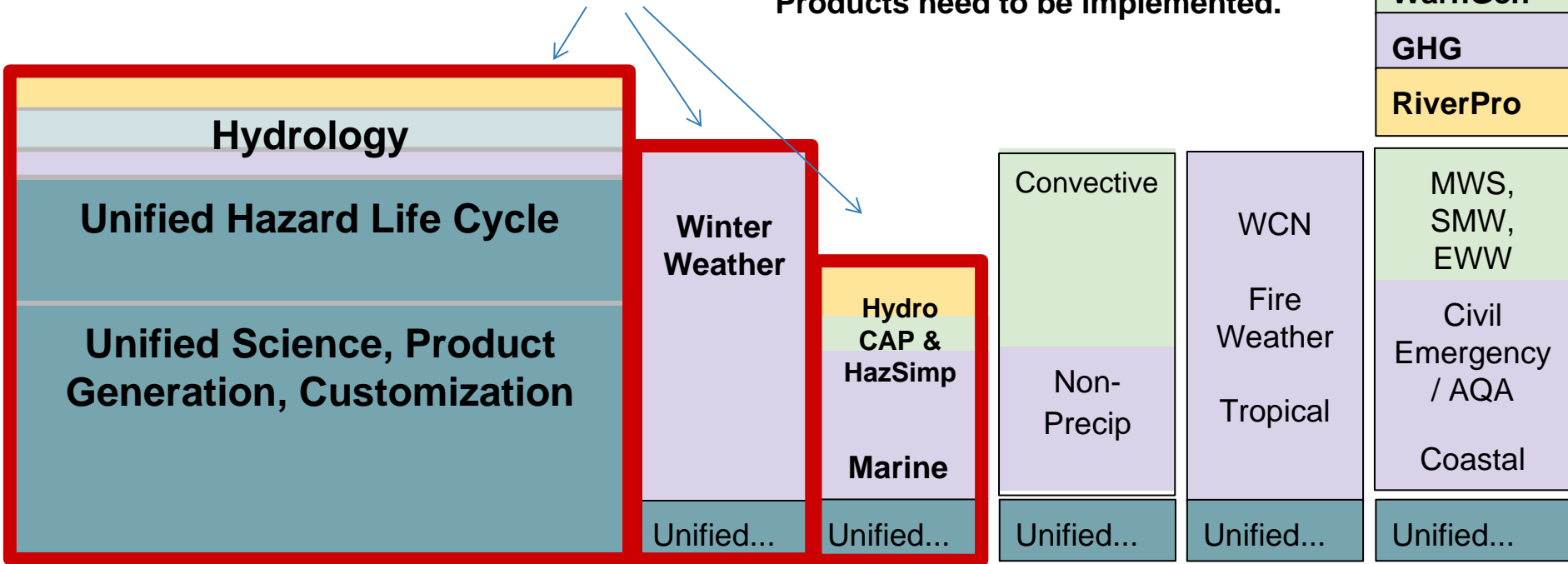


AWIPS Improvements Hazard Services



In Progress Now

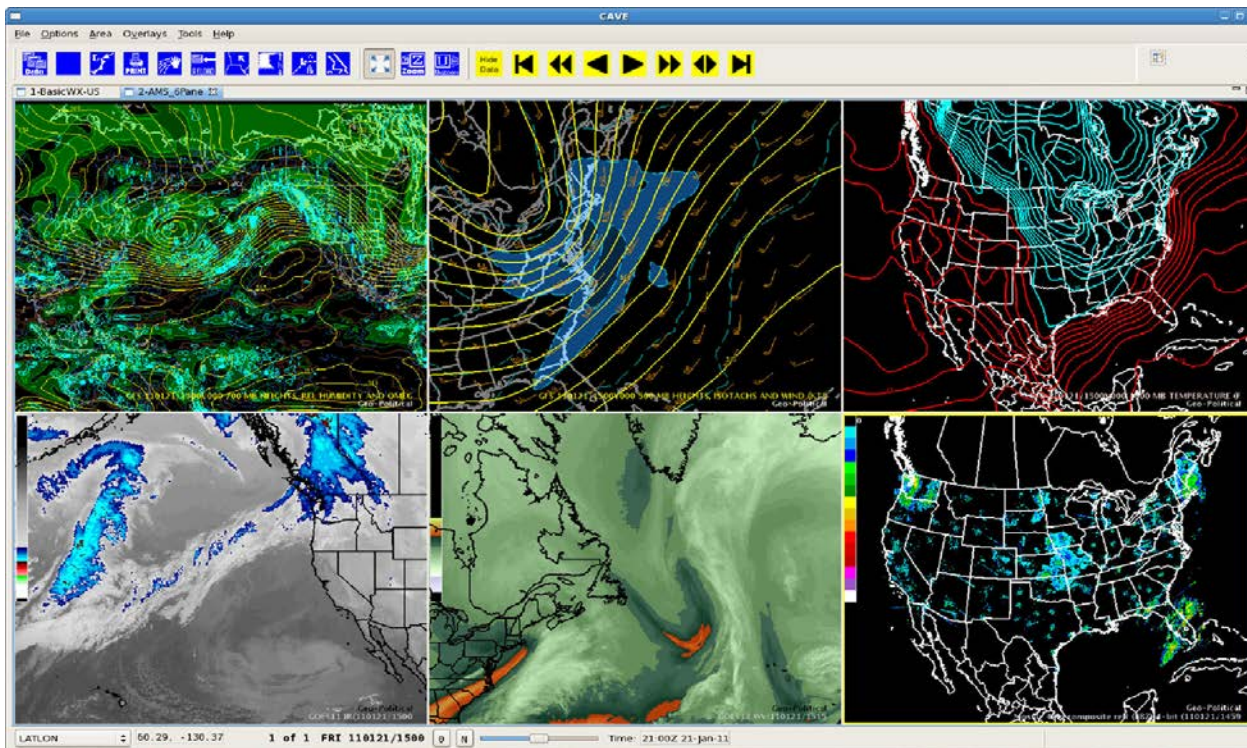
For each hazard category, Recommenders, Meta Information, and Products need to be implemented.



AWIPS Improvements

National Centers Integration with AWIPS

- Integrate capabilities between field and national offices
- Consolidate hardware and software baselines to create common operational picture enabling a fully integrated field structure





AWIPS Improvements

National Centers Integration with AWIPS



Q2 FY18

Complete assessment - AWIPS capabilities gap to migrate National Center processing

Q3 FY18

Initiate development - address capabilities gap

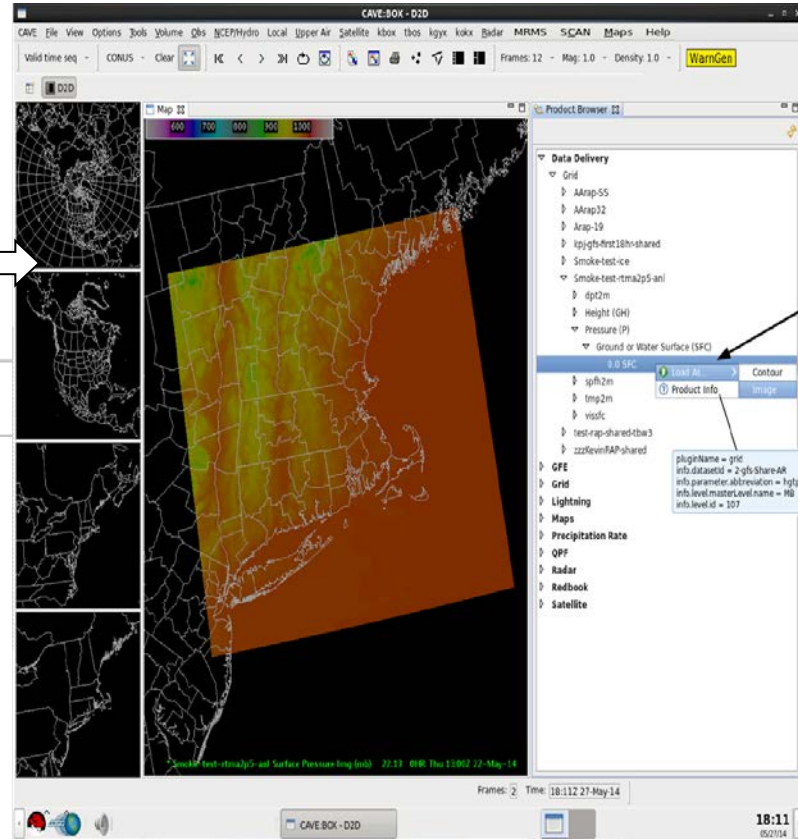
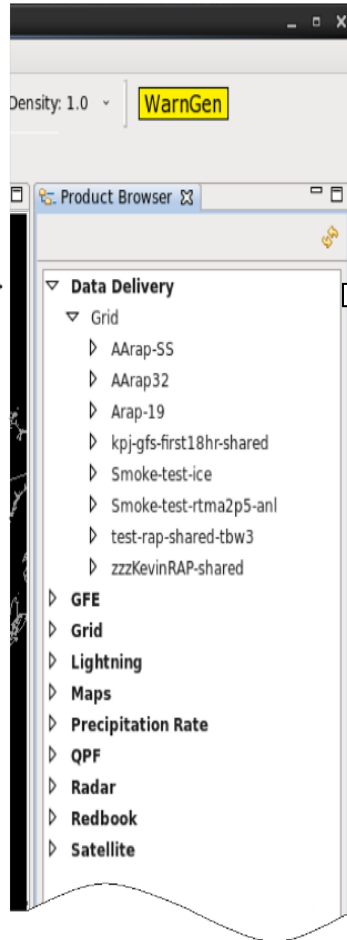
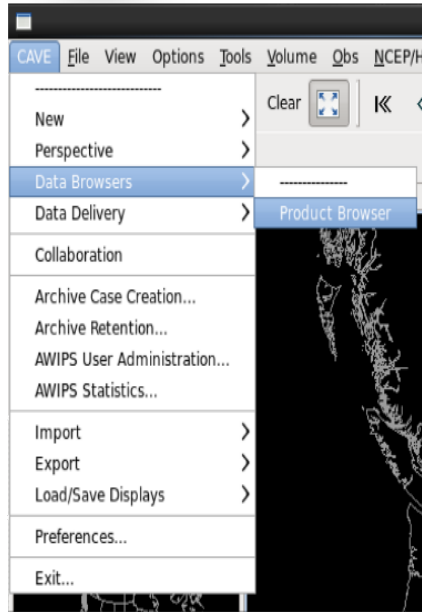
**Ongoing/Future Work -
TBD on Outcome of Above**

Complete assessment & documentation - pre/post processing systems integrated with NAWIPS/AWIPS at National Centers

Document AWIPS requirements – National Centers Continuity of Operations systems & testbed activities

NAWIPS Merger: Analysis for functions performed by D2D, GFE, Hazard Services (Evolve Task)

AWIPS Improvements Data Delivery



Right click (B3) on desired product to open pop-up menu

```
pluginName = grid
info.dataSetId = 2-gfs-share-ak
info.parameter.abbreviation = hgprs
info.level.masterLevelName = HG
info.level.id = 107
```

Late Jan 18

Q2 FY18

Q3 FY18

- Local site testing with NOMADS
- OCLO developing training
- MADIS data access to local sites
- Satellite-derived products available



THANK YOU!

