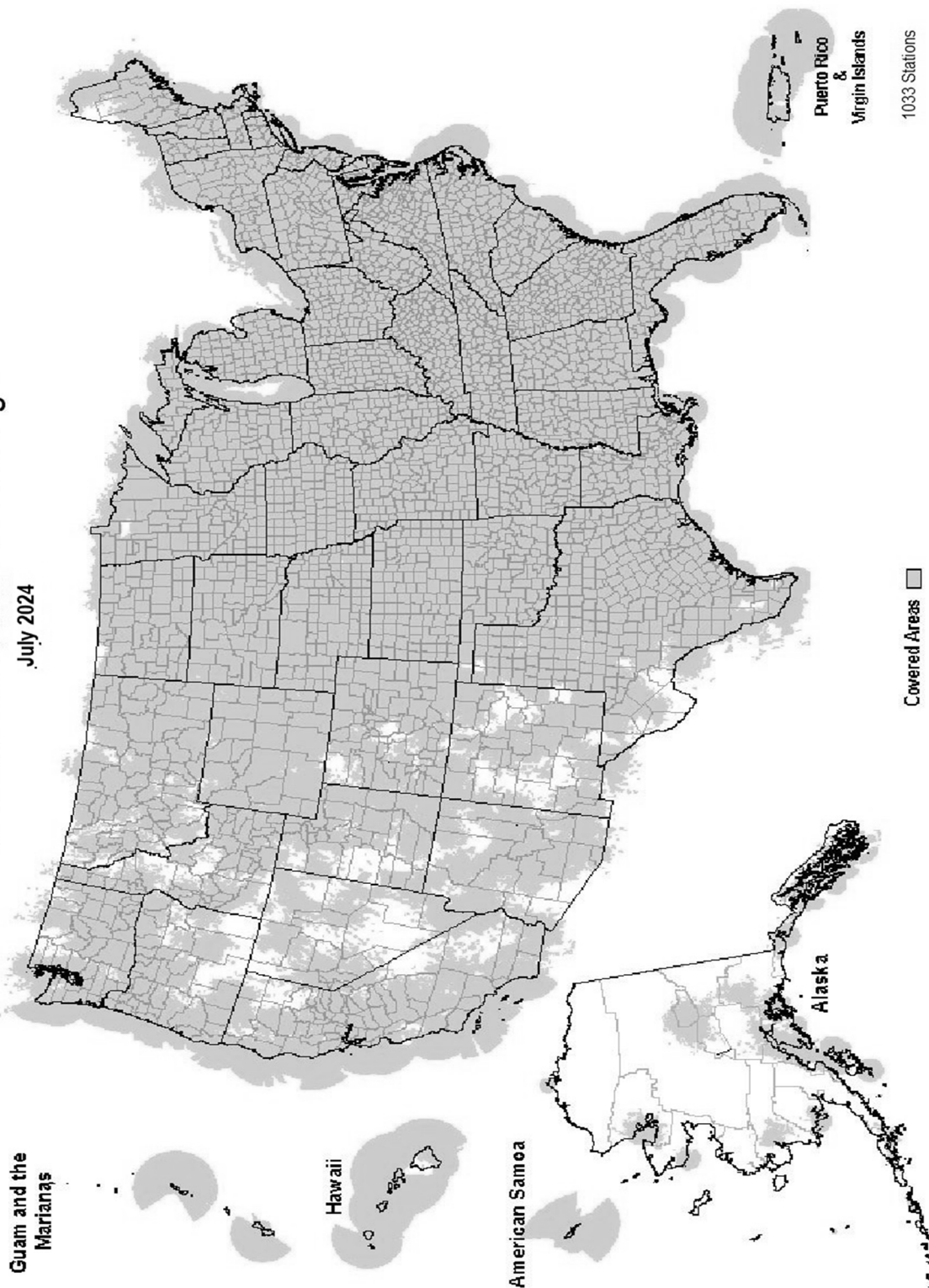
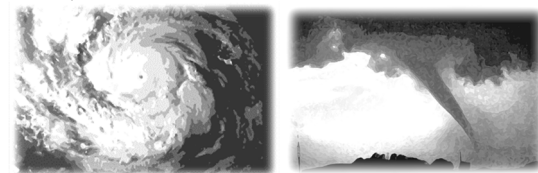


NOAA Weather Radio RF Coverage

July 2024



NOAA/PA 94062  
Rev July 2024



**The Voice of NOAA's  
National Weather Service**

< Over 1000 Transmitters >

**Broadcasting Continuous  
Weather Information on the  
Following Frequencies:**

- 162.400 MHz
- 162.425 MHz
- 162.450 MHz
- 162.475 MHz
- 162.500 MHz
- 162.525 MHz
- 162.550 MHz

U.S. Department of Commerce  
National Oceanic and Atmospheric Administration  
National Weather Service

<http://www.weather.gov/nwr/>

# NOAA WEATHER RADIO

The Voice of NOAA's National Weather Service

<http://www.weather.gov/nwr>

NOAA Weather Radio is a service of the National Oceanic and Atmospheric Administration (NOAA) of the U.S. Department of Commerce. As the "voice of the National Weather Service," it provides continuous broadcasts (24 hours a day) of the latest weather information from local National Weather Service offices. Weather messages are repeated every 4 to 6 minutes and are routinely updated every 1 to 6 hours or more frequently in rapidly changing local weather or if a nearby natural hazardous or manmade condition exists.



The regular broadcasts are specifically tailored to weather information needs of the people within the service area of the transmitter. For example, in addition to general weather information, stations in coastal areas provide information of interest to mariners. Other specialized information, such as hydrological forecasts and other climate data may be broadcast.

During severe weather, National Weather Service forecasters can interrupt the routine weather broadcasts and insert special warning messages concerning imminent threats to life and property. The forecaster can also add special signals to warnings that trigger "alerting" features of specially equipped receivers. In the simplest case, this signal activates audible or visual alarms, indicating that an emergency condition exists within the broadcast areas of the station being monitored, and alerts the listener to turn up the volume and stay tuned for more information. More sophisticated receivers are automatically turned on and set to an audible volume when an alert is received.

In the most sophisticated alerting system, NOAA Weather Radio Specific Area Message Encoding (SAME), digital coding is employed to activate only those special receivers programmed for specific emergency conditions in specific area, typically a county. SAME can activate specially equipped radio and cable television receivers and provide a short text message that identifies the location and type of emergency. SAME is the primary activator for the FCC Emergency Alert System (EAS).

To program NWR SAME receivers with the proper county(s) and marine area(s) of choice, you need to know the 6-digit SAME code number(s) for that county(s). Once you have your code number(s), follow the manufacturer's directions for programming your NWR SAME receiver. You can obtain your SAME code numbers by dialing:

**888-NWR-SAME (888-697-7263) – Voice &TTY/TTD Accessible**

Under a January 1975 White House policy statement, NOAA Weather Radio was designated the sole Government-operated radio system to provide direct warning into private homes for both

RHODE ISLAND  
Providence ..... 162.400

SOUTH CAROLINA  
Aiken ..... 162.450  
Aynor ..... 162.400  
Barnwell ..... 162.500  
Beaufort ..... 162.450  
Charleston ..... 162.550  
Cheraw ..... 162.450  
Columbia ..... 162.400  
Cross ..... 162.475  
Florence ..... 162.550  
Georgetown ..... 162.500  
Greenville ..... 162.550  
Kirksey ..... 162.425  
Orangeburg ..... 162.525  
Rock Hill ..... 162.425  
Savannah ..... 162.400  
Sumter ..... 162.425

SOUTH DAKOTA  
Aberdeen ..... 162.475  
Arlington ..... 162.525  
Faith ..... 162.475  
Firesteel ..... 162.425  
Hot Springs ..... 162.425  
Lead ..... 162.525  
Lowry ..... 162.500  
Mitchell ..... 162.450  
Philip ..... 162.450  
Pickstown ..... 162.425  
Pierre ..... 162.400  
Porcupine ..... 162.500  
Rapid City ..... 162.550  
Reliance ..... 162.525  
Sioux Falls ..... 162.400  
South Shore ..... 162.425  
Wessington ..... 162.550  
White River ..... 162.550

TENNESSEE  
Bristol ..... 162.550  
Centerville ..... 162.450  
Chattanooga ..... 162.550  
Clarksville ..... 162.500  
Clifton ..... 162.500  
Cookeville ..... 162.400  
Dyersburg ..... 162.500  
Hickman ..... 162.500  
Jackson ..... 162.550  
Knoxville ..... 162.475  
La Follette ..... 162.450  
Lafayette ..... 162.525  
Lawrenceburg ..... 162.425  
Lobelville ..... 162.525  
Memphis ..... 162.475  
Nashville ..... 162.550  
Shelbyville ..... 162.475  
Spencer ..... 162.450  
Vale ..... 162.450  
Waverly ..... 162.400  
Winchester ..... 162.525

TEXAS  
Abilene ..... 162.400  
Alpine ..... 162.550  
Amarillo ..... 162.550  
Austin ..... 162.400  
Bay City ..... 162.425  
Beaumont ..... 162.475  
Big Spring ..... 162.475  
Brownsville ..... 162.550  
Bryan ..... 162.550

UTAH  
Bear Lake ..... 162.500  
Castle Dale ..... 162.500  
Coalville/ Park City ..... 162.475  
Escalante ..... 162.425

Burkeville ..... 162.425  
Carrizo Springs ..... 162.550  
Center ..... 162.525  
Childress ..... 162.525  
Cisco ..... 162.500  
Coleman ..... 162.475  
Corpus Christi ..... 162.550  
Corsicana ..... 162.525  
Cumby ..... 162.500  
Dallas ..... 162.400  
Del Rio ..... 162.400  
D'Hanis ..... 162.525  
Dickens ..... 162.500  
Dilley ..... 162.500  
El Paso ..... 162.475  
El Paso Spanish ..... 162.550  
Fort Worth ..... 162.550  
Galveston ..... 162.550  
Gilmer ..... 162.425  
Gonzales ..... 162.525  
Guadalupe Mt Nat'l. Park ..... 162.525  
Junction ..... 162.475  
Kerrville ..... 162.450  
La Grange ..... 162.500  
Laredo ..... 162.475  
Llano ..... 162.425  
Lubbock ..... 162.400  
Lufkin ..... 162.550  
Heathsville ..... 162.525  
Miami ..... 162.450  
Midland/Odessa ..... 162.400  
Milano ..... 162.525  
Mineral Wells ..... 162.525  
Muenster ..... 162.425  
New Taiton ..... 162.450  
Onalaska ..... 162.500  
Ozona ..... 162.500  
Palestine ..... 162.450  
Paris ..... 162.550  
Pecos ..... 162.450  
Perryton ..... 162.475  
Pharr ..... 162.400  
Pharr Spanish ..... 162.475  
Plainview ..... 162.450  
Port O'Connor ..... 162.475  
Richland Springs ..... 162.525  
Richmond ..... 162.475  
Rio Grande City ..... 162.425  
Riviera ..... 162.525  
San Angelo ..... 162.550  
San Antonio ..... 162.550  
Santa Maria Spanish ..... 162.450  
Seguin ..... 162.475  
Seminole ..... 162.425  
Sherman ..... 162.475  
Stephenville ..... 162.450  
Stinnett ..... 162.400  
Summerfield ..... 162.500  
Sweetwater ..... 162.425  
Texarkana ..... 162.550  
Three Rivers ..... 162.450  
Throckmorton ..... 162.425  
Tomball ..... 162.400  
Tyler ..... 162.475  
Uvalde ..... 162.425  
Victoria ..... 162.400  
Waco ..... 162.475  
Wichita Falls ..... 162.475

VIRGINIA  
Accomack ..... 162.525  
Covesville ..... 162.450  
Fredericksburg ..... 162.425  
Heathsville ..... 162.400  
Lynchburg ..... 162.550  
Manassas ..... 162.550  
Norfolk ..... 162.550  
Providence Forge ..... 162.500  
Richlands ..... 162.425  
Richmond ..... 162.475  
Roanoke ..... 162.475  
Sand Mtn. .... 162.450  
South Boston ..... 162.525

WASHINGTON  
Astoria ..... 162.400  
Capitol Peak ..... 162.475  
Cle Elum ..... 162.400  
Davis Peak ..... 162.525  
Dayton ..... 162.525  
Forks ..... 162.425  
H Street - Blaine Area ..... 162.525  
Neah Bay ..... 162.550  
Okanogan ..... 162.525  
Plymouth ..... 162.425  
Puget Sound Marine ..... 162.425  
Randle ..... 162.425  
Richland ..... 162.450  
Seattle ..... 162.550  
Spokane ..... 162.400  
Wenatchee ..... 162.475  
Yakima ..... 162.550

WEST VIRGINIA  
Backbone Mountain ..... 162.450  
Beckley ..... 162.550  
Charleston ..... 162.400  
Clarksburg ..... 162.550  
Garfield ..... 162.500  
Gilbert ..... 162.475

Lake Powell ..... 162.550  
Logan ..... 162.400  
Manti ..... 162.425  
Milford/Cedar City ..... 162.400  
Moab ..... 162.475  
Monticello ..... 162.450  
Salt Lake City ..... 162.550  
St. George ..... 162.475  
Tabiona ..... 162.550  
Tooele (South Mountain) ..... 162.450  
Tooele (Vernon Hills) ..... 162.525  
Vernal ..... 162.400  
Wendover ..... 162.475

VERMONT  
Burlington ..... 162.400  
Castleton ..... 162.500  
St. Johnsbury ..... 162.425  
Windsor ..... 162.475

VIRGIN ISLANDS  
St. Thomas ..... 162.450

WISCONSIN  
Ashland ..... 162.525  
Baraboo ..... 162.450  
Black River Falls ..... 162.500  
Coloma ..... 162.400  
Crandon ..... 162.450  
Dubuque ..... 162.400  
Fond Du Lac ..... 162.500  
Green Bay ..... 162.550  
Gresham ..... 162.500  
Janesville ..... 162.425  
Ladysmith ..... 162.550  
Madison ..... 162.550  
Menomonie ..... 162.400  
Milwaukee ..... 162.400  
New London ..... 162.525  
Park Falls ..... 162.500  
Prairie Du Chien ..... 162.500  
Racine ..... 162.450  
Rhinelander ..... 162.400  
Richland Center ..... 162.475  
Sheboygan ..... 162.525  
Sister Bay ..... 162.425  
Spooner ..... 162.475  
Tomah ..... 162.525  
Wausau ..... 162.475  
Wausaukee ..... 162.400  
Winona ..... 162.425  
Withee ..... 162.425

WYOMING  
Afton ..... 162.475  
Casper ..... 162.400  
Cheyenne ..... 162.550  
Cody ..... 162.400  
Dubois ..... 162.450  
Elk Plaza ..... 162.425  
Evanston ..... 162.450  
Gillette ..... 162.500  
Glendo ..... 162.450  
Grant Village ..... 162.450  
Jackson ..... 162.525  
Kaycee ..... 162.550  
Kemmerer ..... 162.525  
Lander ..... 162.475  
Newcastle ..... 162.475  
Pinedale ..... 162.500  
Rawlins ..... 162.425  
Rock Springs ..... 162.550  
Sheridan ..... 162.475  
Thermopolis ..... 162.500  
Worland ..... 162.525

Greggs Knob ..... 162.500  
Hinton ..... 162.425  
Monteville ..... 162.525  
Moorefield ..... 162.400  
Morgantown ..... 162.475  
Sutton ..... 162.450

As of July 2024 NOAA is operating 1033 stations across the United States and its territories.

The National Weather Service requests your assistance in reporting any outages of NOAA Weather Broadcast Stations.

Please use our Toll Free Number (888) 697-7263 or send an Email to [nwroutage@noaa.gov](mailto:nwroutage@noaa.gov) to report the outage.

Doniphan .....	162.450
El Dorado Springs .....	162.475
Eldon .....	162.550
Fordland .....	162.400
Fredericktown .....	162.500
Gainesville .....	162.425
Hannibal .....	162.475
Hawk Point .....	162.425
Hermitage .....	162.450
Jamestown .....	162.425
Joplin .....	162.550
Kansas City .....	162.550
La Plata .....	162.525
Lancaster .....	162.550
Maryville .....	162.425
Medill .....	162.450
Neosho .....	162.450
Piedmont .....	162.425
St. Louis .....	162.550
Summersville .....	162.475
Trenton .....	162.500
Wardell .....	162.525
West Plains .....	162.525

#### MONTANA

Baker .....	162.550
Belgian Hill .....	162.500
Billings .....	162.550
Bozeman .....	162.500
Broadus .....	162.425
Browning .....	162.525
Butte .....	162.550
Circle .....	162.550
Dillon .....	162.475
Ekalaka .....	162.475
Forsyth .....	162.525
Glasgow .....	162.400
Glendive .....	162.475
Glentana .....	162.525
Great Falls .....	162.550
Hardin .....	162.450
Havre .....	162.400
Helena .....	162.400
Jordan .....	162.500
Kalispell .....	162.550
Lewistown .....	162.500
Livingston .....	162.525
Malta .....	162.475
Miles City .....	162.400
Missoula .....	162.400
Plentywood .....	162.475
Poplar .....	162.425
Ryegate .....	162.450
Scobey .....	162.450
Wibaux .....	162.500
Winnett .....	162.400

#### NEBRASKA

Albion .....	162.500
Bassett .....	162.475
Beatrice .....	162.450
Cambridge .....	162.525
Chadron .....	162.525
Columbus .....	162.450
Grand Island .....	162.400
Holdrege .....	162.475
Lexington .....	162.425
Lincoln .....	162.475
Merna .....	162.500
Merriman .....	162.400
Mullen .....	162.425
Norfolk .....	162.550
North Platte .....	162.550
Omaha .....	162.400

Ord .....	162.525
Oshkosh .....	162.525
Scottsbluff .....	162.475
Shubert .....	162.500
Sidney .....	162.500
Superior .....	162.525
Trenton .....	162.500
Valentine .....	162.450
Yankton .....	162.500

#### NEVADA

Battle Mtn. ....	162.425
Bullhead City .....	162.500
Elko .....	162.550
Ely .....	162.400
Eureka .....	162.550
Fernley .....	162.450
Hawthorne.....	162.475
Jackpot .....	162.500
Las Vegas .....	162.550
Owyhee .....	162.450
Pahrump .....	162.400
Reno .....	162.550
Tonopah .....	162.400
Winnemucca.....	162.400

#### NEW HAMPSHIRE

Clarksville .....	162.400
Concord .....	162.400
Deerfield .....	162.450
Hanover .....	162.525
Holderness .....	162.550
Mt. Washington .....	162.500
Pack Monadnock.....	162.525

#### NEW JERSEY

Atlantic City.....	162.400
Hardyston .....	162.500
Southard .....	162.450

#### NEW MEXICO

Albuquerque .....	162.400
Artesia .....	162.425
Carlsbad .....	162.475
Des Moines .....	162.550
Farmington .....	162.475
Hobbs .....	162.400
Las Cruces .....	162.400
Portales .....	162.475
Roswell .....	162.450
Ruidoso .....	162.550
Santa Fe .....	162.550
Silver City .....	162.425

#### NEW YORK

Albany .....	162.550
Binghamton.....	162.475
Buffalo .....	162.550
Call Hill .....	162.425
Cattaraugus .....	162.425
Cooperstown .....	162.450
Elmira .....	162.400
Frewsburg .....	162.525
Gore Mtn. ....	162.450
Highland .....	162.475
Ithaca .....	162.500
Lyons .....	162.475
Middleville .....	162.425
Mt. Washington .....	162.450
New York City .....	162.550
Norwich .....	162.525
Riverhead .....	162.475
Rochester .....	162.400

Spencerport .....	162.525
Stamford .....	162.400
Syracuse .....	162.550
Walton .....	162.425
Watertown .....	162.475
White Hill .....	162.525

#### NORTH CAROLINA

Asheville .....	162.400
Buck Mountain .....	162.500
Cape Hatteras .....	162.475
Chapel Hill .....	162.550
Charlotte .....	162.475
Elberbe .....	162.400
Garner .....	162.450
Henderson .....	162.500
Linville .....	162.450
Mamie .....	162.425
Margarettsville .....	162.450
Mount Jefferson .....	162.500
New Bern .....	162.400
Robbinsville .....	162.525
Rocky Mount .....	162.475
Saint Pauls .....	162.475
Statesville .....	162.525
Warsaw .....	162.425
Windsor .....	162.525
Winnabow .....	162.550
Winston-Salem.....	162.400

#### NORTH DAKOTA

Bismarck .....	162.475
Cavalier .....	162.450
Dickinson .....	162.400
Fargo .....	162.475
Fort Ransom .....	162.525
Grand Forks .....	162.475
Jamestown .....	162.550
Langdon .....	162.500
Minot .....	162.400
New Town .....	162.525
Petersburg .....	162.400
Rolla .....	162.475
Scranton .....	162.525
Sheyenne .....	162.525
Steele .....	162.400
Webster .....	162.425
Williston .....	162.550
Willow City .....	162.450

#### NORTHERN MARIANA ISLANDS

Saipan .....	162.550
--------------	---------

#### OHIO

Akron .....	162.400
Athens .....	162.425
Bridgeport .....	162.525
Carey .....	162.525
Chillicothe .....	162.500
Cleveland .....	162.550
Columbus .....	162.550
Dayton .....	162.475
Grafton .....	162.500
High Hill .....	162.475
Lima .....	162.400
Mansfield .....	162.450
Marietta .....	162.400
New Philadelphia.....	162.425
Otway .....	162.525
Sandusky.....	162.400
Toledo .....	162.500
Youngstown .....	162.500

#### OKLAHOMA

Altus .....	162.425
Antlers .....	162.400
Ardmore .....	162.525
Atoka .....	162.500
Bartlesville .....	162.425
Broken Bow .....	162.450
Chickasha .....	162.450
Clinton .....	162.525
Enid .....	162.475
Grove .....	162.525
Guymon .....	162.500
Lawton .....	162.550
McAlester .....	162.475
Oklahoma City .....	162.400
Oktaha .....	162.525
Ponca City .....	162.450
Stillwater .....	162.500
Tulsa .....	162.550
Wewoka .....	162.550
Woodward .....	162.500

#### OREGON

Bend/Redmond.....	162.500
Brookings .....	162.550
Burns Butte .....	162.475
Cape Blanco .....	162.425
Carney Butte .....	162.475
Coos Bay .....	162.400
Eugene .....	162.400
Florence .....	162.500
Fossil .....	162.550
Heppler .....	162.425
John Day .....	162.500
Klamath Falls.....	162.550
Medford.....	162.400
Mt Hebo .....	162.525
Mt. Ashland .....	162.475
Neahkahnie .....	162.425
Newport .....	162.550
Portland .....	162.550
Reedsport .....	162.525
Roseburg .....	162.550
Salem .....	162.475
Spout Springs .....	162.400
The Dalles .....	162.400
Tillamook .....	162.475

#### PENNSYLVANIA

Allentown .....	162.400
Altoona .....	162.425
Clearfield .....	162.550
Coudersport .....	162.500
Erie .....	162.400
Harrisburg .....	162.550
Hibernia Park.....	162.425
Honesdale .....	162.450
Huntingdon .....	162.525
Johnstown .....	162.400
Meadville .....	162.475
Parker .....	162.425
Philadelphia .....	162.475
Pittsburgh .....	162.550
Reynoldsville .....	162.500
State College.....	162.475
Towanda .....	162.525
Warren .....	162.450
Wellsboro .....	162.475
Wilkes-Barre .....	162.550
Williamsport.....	162.400

#### PUERTO RICO

Maricao.....	162.550
San Juan .....	162.400

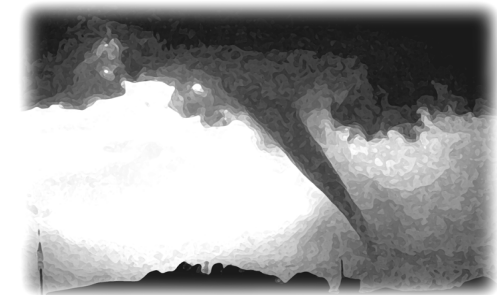
natural disasters and nuclear attack. This concept has been expanded to include warnings for all hazardous conditions that pose a threat to life and safety, both at a local and national level. As a result, NOAA Weather Radio is being better integrated with other National Weather Service systems to provide state and local emergency managers and other warning providers better access to local weather forecast offices, allowing hazard warnings of all types to be broadcast on NOAA Weather Radio within seconds

NOAA Weather Radio currently broadcasts from 1033 stations in fifty states, Puerto Rico, the U.S. Virgin Islands, American Samoa, Guam, and Saipan on seven frequencies in the VHF band, ranging from 162.400 to 162.550 megahertz (MHz). These frequencies are outside the normal AM or FM broadcast bands.

Special radios that receive only NOAA Weather Radio, both with and without special alerting features, are available from numerous manufacturers. In addition, other manufacturers are including NWR capability in a variety of receivers. NOAA Weather Radio capability is currently available on automobile, aircraft, marine, citizens band, and standard AM/FM radios as well as communications receivers, transceivers, scanners, and cable TV.

By nature and design, NOAA Weather Radio coverage is limited to an area within 40 miles of the transmitter. The quality of reception is dictated by transmitter distance, local terrain, and the quality and location of the receiver. In general, those using a high quality receiver on flat terrain or at sea can expect reliable reception beyond 40 miles. Those with standard receivers, surrounded by large buildings in cities and those in mountain valleys may experience little or no reception at considerably less than 40 miles. If possible, a receiver should be tested in the location where it will be used prior to purchase.

NOAA Weather Radio is directly available to a large portion of the U.S. and covers greater than 95 percent of the population.



If you have a question regarding the technical aspects of NOAA Weather Radio such as transmitter location, reception, and characteristics or if you are interested in becoming a partner with the National Weather Service to identify or provide local funding and/or facilities for the installation of a NOAA Weather Radio transmitter, please contact your local National Weather Service Office or send a letter to:

National Weather Service  
Attn: Dissemination Systems Branch, W/DSB  
1325 East-West Highway  
Silver Spring, MD 20910

