

KOEHLER CUP - Erie to Ashtabula

Distance: 36.62 miles

Time Limit: 13hrs for first boat.

Start: Lake Mark R2

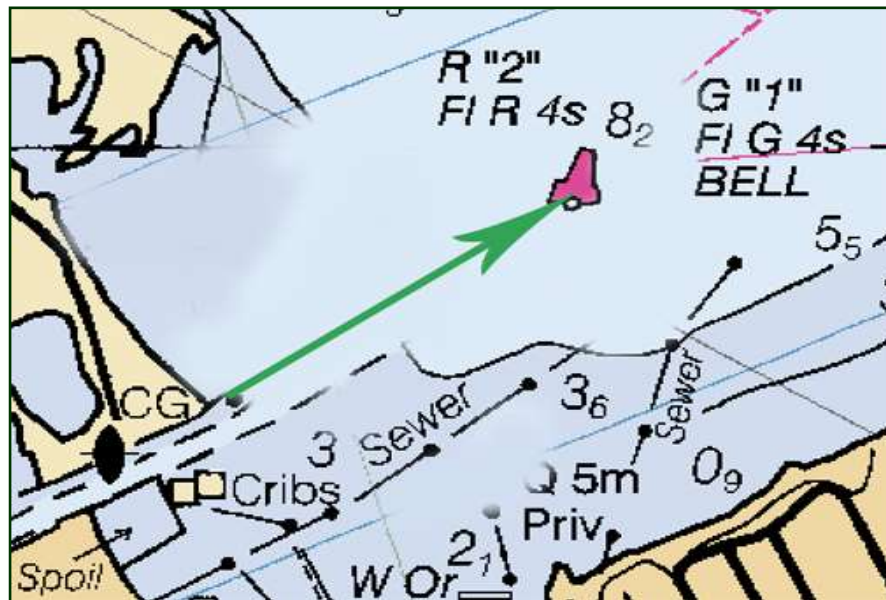
N 42 09 930 W 080 03 26 aprox.

Finish: Ashtabula Harbor Entrance

N 41 55 248 W 080 47 55 aprox.

The Start: The line is between R2 and the yellow flag on the committee boat. If the committee boat is not on station, the start line is a line between R2 and the North Channel wall light house.

**Start @
"R2"**



The Finish line is between the Ashtabula harbor entrance lights at the east pier head and the west pier head as pictured below. Take your own time and record the time of the boat behind you using the finish form provided.

