

# COUNTY OF EL DORADO

# DEPARTMENT OF TRANSPORTATION



**TAHOE ENGINEERING**  
 924B Emerald Bay Road  
 South Lake Tahoe, CA 96150  
 Phone: (530) 573-7900  
 Fax: (530) 541-7049

**RICHARD W. SHEPARD, P.E.**  
 Director of Transportation  
  
 Internet Web Site:  
<http://co.el-dorado.ca.us/dot>

**MAIN OFFICE**  
 2850 Fairlane Court  
 Placerville CA 95667  
 Phone: (530) 621-5900  
 Fax: (530) 626-0387



**DATE:** October 20, 2008

**TO:** All Prospective Bidders

**SUBJECT: Responses to Bidders' Inquiries No. 3**  
**El Dorado Trail Improvement Project, Forni Road to Missouri Flat Road**  
**(Bid No. GS 08-1021)**

Bid Inquiry No. 3 contains responses to questions posed for the above referenced project.

ITEM NO.	PAGE OR DRAWING NO.	INQUIRY/RESPONSE
3.01	C14, C15, P-4,P-5	<b>Question: If there is not enough ballast to cover entire trail 6", is the contractor going to be compensated under the aggregate base cubic yardage line item?</b> <b>Answer:</b> No, this would be a negotiated Change Order per Standard Specification Section 4: Scope of Work
3.02	Plan Sheet C6,C7,C8,C9, C11,C13, C16,C7,C18	<b>Question: Sheet C16 - Sign detail "D" states "warning signs as noted on plans". On plans it states "see sign detail "D" on sheet C16". What caution signs are needed?</b> <b>Answer:</b> Sign locations are called out on the plan sheets by Station. The callouts include which signs are required at each location. The Keynote refers to which sign detail is relevant.
3.03	Plan Sheet C16,C17,C18	<b>Question: "Begin Pathway at Missouri Flat Road", Sheet C18- "Pathway Crossing @ Longhrut Rd" and "Pathway Crossing P Old Depot Road" - it calls for Sign D and also a Stop sign. Will this Stop sign be on the same post as Sign D or a separate post?</b> <b>Answer:</b> Sign locations are called out in the detail by Station. The callouts include which signs are required at each location. The "Sign Detail" refers to which sign detail on Sheet C16 is relevant.
3.04	SP-51 Plan Sheet C12 Plan Sheet C16	<b>Question: There are no specs for the Eldeberry Beetle sign. Do you have a count for this sign?</b> <b>Answer:</b> Section 10-1.05 – As stated in specifications.
3.05	Plan Sheet S8	<b>Question: Does this mean the rails along the path will also have the galvanized wire mesh?</b> <b>Answer:</b> As shown on plan
3.06	Plan Sheet C3	<b>Question: Section H – H sheet C3 shows an 18" post footing for pathway rails. Culvert bridge elevation shows a 2'-0" post footing for abutment rails.</b> <b>Answer:</b> As shown on plan.

October 20, 2008

3.07	SP-74	<p><b>Question: Handrail detail sheet C17 does not specify material. Can the handrail be galvanized pipe?</b></p> <p><b>Answer: Section 10-1.33 – As stated in the specifications.</b></p>
3.08	Plan Sheet C19	<p><b>Question: The revised retaining wall detail in addendum #2 shows timber treated railing being constructed on top of the Retaining walls. What bid item do we bid this on, and are the quantities going to be adjusted to make up for that added treated timber on the retaining walls.</b></p> <p><b>Answer: The limits and quantity of treated timber railing are unchanged. The retaining wall detail in Addendum 2.21 was provided to clarify the connection of the treated timber railing to the retaining wall.</b></p>
3.09	SP-58, SP-59	<p><b>Regarding Addendum #1, item #1.04 "Existing Highway Facilities Remove Railroad Rails and Ties" The disposal of Railroad Ties is Hazardous Waste and expensive to dispose of, it is impossible to bid this item with this language. The contractor needs to have a specified amount of ties to bid so all bidders are assuming the same disposal amount. Please clarify this.</b></p> <p><b>Answer: Contractor shall assume 50% of the ties will be rejected by the County.</b></p>

Holders who have already mailed their proposal can contact Jordan Postlewait at (530) 621-5330 (email: jordan.postlewait@edcgov.us) to arrange for the return of their proposal.

Inform all suppliers and subcontractors as necessary.

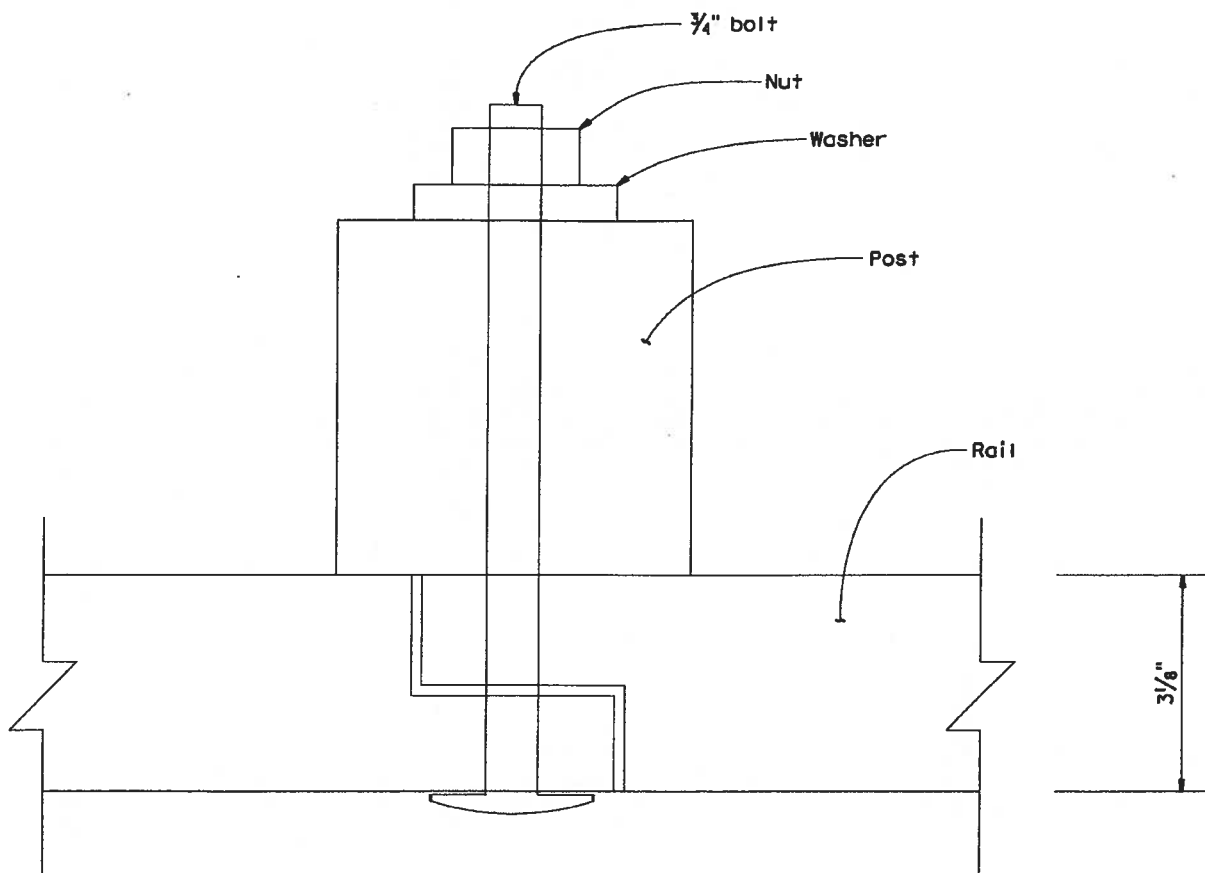
The General Services Department is sending these responses to bidders' inquiries by fax to all document holders. These responses to bidders' inquiries will also be available at the following website: <http://www.co.el-dorado.ca.us/DOT/bids.html>

**Responses to bidder inquiries, unless incorporated into formal addenda to the contract, are not a part of the contract, and are provided for the bidder's convenience only. In some instances, the question and answer may represent a summary of the matters discussed rather than a word-for-word recitation. The availability or use of information provided in the responses to bidder inquiries is not to be construed in any way as a waiver of the provisions of Section 2-1.03, "Examination of Plans, Specifications, Contract, and Site of Work," of the Standard Specifications or any other provision of the contract, the plans, Standard Specifications, or special provisions, nor to excuse the contractor from full compliance with those contract requirements. Bidders are cautioned that subsequent responses or contract addenda may affect or vary a response previously given.**

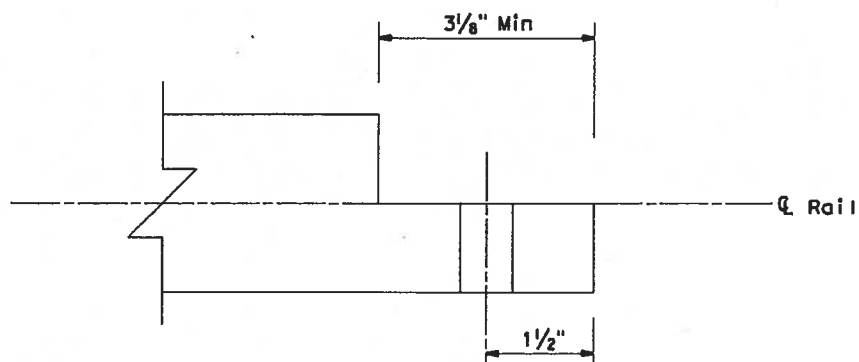
Sincerely,

Jordan Postlewait  
 Manager of Parks and Grounds

Cc: Janel Gifford, DOT  
 John Kahling, DOT



**PLAN VIEW OF RAIL/POST CONNECTION**  
NO SCALE



**END RAIL DETAIL**  
NO SCALE