



**UNIFLEX®**  
Fluid Applied Roofing Systems

# PRODUCT PORTFOLIO





# Table of Contents

Benefits of UNIFLEX Fluid Applied Roofing Systems	2-3
Elastomeric Finish Coats	4-5
Aluminum Finish Coats	6
Asphalt Emulsion Coatings	7
Base Coats & Primers	8-9
Patch & Repair: Roof Coatings, Fabrics, & Tapes	10-11
Patch & Repair: Roofing Sealants	12-13
Part Numbers	14-16

# Benefits of UNIFLEX Fluid Applied Roofing Systems

## No Tear-Offs

- **No Disruption To Occupants.** With UNIFLEX, there is no need to close the building during installation. The non-toxic formulation means no disruption to occupants and no interruption of business.
- **Lightweight Solution.** Unlike traditional roof replacement, UNIFLEX Fluid Applied Roofing Systems provide a lightweight solution to roofing needs. It's ounces, not pounds, per square foot.

## Extend the Life of Your Roof

- **Longer Building Life Cycle.** UNIFLEX Fluid Applied Roofing Systems are installed onto existing roofs to extend the service life of the facility.
- **Great Weatherability.** UNIFLEX Fluid Applied Roofing Systems are resistant to blistering, chalking, checking, cracking, and flaking – protecting the roof from further weathering and degradation.

## Sustainable Solutions

- **Environmentally Responsible.** The formulations of UNIFLEX Fluid Applied Roofing Systems do not require hot kettles or flames during installation. It's a safer process, and the environmental benefits are significant.
- **Lower Roof Temperatures.** Highly reflective white coatings reflect 85% of the sun's radiant heat, dramatically lowering the temperature of the underlying roof and preventing further degradation.

## Seamless Waterproofing

- **Proven Performance.** UNIFLEX Fluid Applied Roofing Systems are fully adhered and monolithic (seamless), protecting the investment and providing maximum durability.

## Energy & Utility Savings

- **Significant Energy Savings.** According to EnergyStar.gov, having a white, reflective roof reduces the roof's surface temperature by up to 100°F, significantly decreasing the amount of heat transferred into the building and reducing peak cooling demands. Higher reflectivity = lower energy consumption and lower cooling costs.
- **Cost-Saving Installation.** UNIFLEX Fluid Applied Roofing Systems are typically easier to install and maintain than a conventional tear-off roof and also eliminate unnecessary construction waste. This means such projects generally cost a fraction of the price of a new roof installation.
- **Tax Benefits.** Because roof maintenance system jobs are often deductible in the first year while most total roof replacements are not, some building owners realize a tax benefit when using UNIFLEX Fluid Applied Roofing Systems.
- **Utility Rebates.** Some utility companies offer rebates to building owners who conserve energy by using white reflective roof coatings. Local utility companies can provide more details about their energy rebate programs. Further details can be found at [www.dsireusa.org](http://www.dsireusa.org).





# Elastomeric Finish Coats

Elastomeric Finish Coats provide superior flexibility and durability. UNIFLEX® offers elastomeric roof coatings in highly reflective white, as well as custom shades in a variety of colors.



PRODUCT NAME	PREMIUM SOLVENT BASED ELASTOMERIC WHITE	PREMIUM ACRYLIC ELASTOMERIC WHITE	PREMIUM ACRYLIC ELASTOMERIC BLACK	PREMIUM ACRYLIC ELASTOMERIC SEDONA TAN	PREMIUM ACRYLIC ELASTOMERIC ADOBE LIGHT TAN	PREMIUM ACRYLIC ELASTOMERIC TINT BASES	COMMERCIAL GRADE ACRYLIC ELASTOMERIC WHITE
TECHNOLOGY	SOLVENT-BASED THERMOPLASTIC RUBBER	100% ACRYLIC ELASTOMERIC	100% ACRYLIC ELASTOMERIC	100% ACRYLIC ELASTOMERIC	100% ACRYLIC ELASTOMERIC	100% ACRYLIC ELASTOMERIC	100% ACRYLIC ELASTOMERIC
FEATURES & BENEFITS	<ul style="list-style-type: none"> <li>Premium grade</li> <li>Outstanding adhesion</li> <li>Superior reflectivity</li> <li>Resists cracking and peeling in ponding water situations</li> <li>Excellent waterproofing capabilities</li> <li>Reduces surface temperatures, minimizing thermal expansion and contraction</li> </ul>	<ul style="list-style-type: none"> <li>Premium grade</li> <li>Outstanding adhesion</li> <li>Superior reflectivity</li> <li>Resists cracking and peeling</li> <li>Excellent waterproofing capabilities</li> <li>Reduces surface temperatures, minimizing thermal expansion and contraction</li> </ul>	<ul style="list-style-type: none"> <li>Premium grade</li> <li>Outstanding adhesion</li> <li>Resists cracking and peeling</li> <li>Excellent waterproofing capabilities</li> </ul>	<ul style="list-style-type: none"> <li>Premium grade</li> <li>Outstanding adhesion</li> <li>Resists cracking and peeling</li> <li>Excellent waterproofing capabilities</li> </ul>	<ul style="list-style-type: none"> <li>Premium grade</li> <li>Outstanding adhesion</li> <li>Resists cracking and peeling</li> <li>Excellent waterproofing capabilities</li> </ul>	<ul style="list-style-type: none"> <li>Premium grade</li> <li>Excellent waterproofing capabilities</li> <li>Can be custom matched or shaded to the Sher-Color™ Palette</li> <li>Must be tinted with EnviroToner Colorant system</li> </ul>	<ul style="list-style-type: none"> <li>Commercial grade</li> <li>Excellent adhesion and reflectivity</li> <li>Great performance and value</li> <li>Excellent waterproofing capabilities</li> </ul>
RECOMMENDED SUBSTRATES	Over metal, polyurethane foam, smooth BUR, modified bitumen, granular cap sheets, and other approved surfaces	Over metal, polyurethane foam, concrete, smooth BUR, modified bitumen, granular cap sheets, EPDM, Hypalon®, and other approved surfaces	Over metal, polyurethane foam, concrete, smooth BUR, modified bitumen, granular cap sheets, EPDM, Hypalon®, and other approved surfaces	Over metal, polyurethane foam, concrete, smooth BUR, modified bitumen, granular cap sheets, EPDM, Hypalon®, and other approved surfaces	Over metal, polyurethane foam, concrete, smooth BUR, modified bitumen, granular cap sheets, EPDM, Hypalon®, and other approved surfaces	Over metal, polyurethane foam, concrete, smooth BUR, modified bitumen, granular cap sheets, EPDM, Hypalon®, and other approved surfaces	Over metal, polyurethane foam, concrete, smooth BUR, modified bitumen, granular cap sheets, EPDM, Hypalon®, and other approved surfaces
USE WITH FABRIC/SEAM TAPE	✓	✓	✓	✓	✓	✓	✓
PART NUMBER	KST041200 WHITE	KST041300 WHITE	KST041325 BLACK	KST41300T SEDONATAN	KST04130T ADOBE LIGHT TAN	KST04130P PASTEL BASE KST04130D DEEP BASE KST04130A ACCENT BASE	KST041500 WHITE
SIZE	5-GALLON, 55-GALLON DRUM	5-GALLON, 55-GALLON DRUM, 275-GALLON TOTE	5-GALLON, 55-GALLON DRUM	5-GALLON, 55-GALLON DRUM	5-GALLON, 55-GALLON DRUM	5-GALLON	5-GALLON, 55-GALLON DRUM, 275-GALLON TOTE
VOC	< 250 g/L	≤ 50 g/L	< 50 g/L	≤ 50 g/L	≤ 50 g/L	< 50 g/L	< 50 g/L

## APPROVALS

Refer to the current MSDS/EDS for specific VOCs (calculated per 40 CFR 59.406).





# Aluminum Finish Coats

Aluminum Finish Coats are proven to protect a roof surface from the elements. Provides a protective aluminum finish with waterproofing capabilities.



PRODUCT NAME	500 PREMIUM ALUMINUM	300 COMMERCIAL ALUMINUM	SUPERBRITE NON-FIBERED ALUMINUM
TECHNOLOGY	ASPHALT	ASPHALT	ASPHALT/GILSONITE
FEATURES & BENEFITS	<ul style="list-style-type: none"> <li>Premium grade</li> <li>Cost Effective</li> <li>One coat in many applications</li> <li>Can be applied directly to lightly rusted metal roofs without primer</li> </ul>	<ul style="list-style-type: none"> <li>Commercial grade</li> <li>Cost Effective</li> <li>One coat in many applications</li> <li>Can be applied directly to lightly rusted metal roofs without primer</li> </ul>	<ul style="list-style-type: none"> <li>Cost Effective</li> <li>One coat in many applications</li> <li>Can be applied directly to lightly rusted metal roofs without primer</li> </ul>
RECOMMENDED SUBSTRATES	Over metal, smooth BUR, modified bitumen, and other approved surfaces	Over metal, smooth BUR, modified bitumen, and other approved surfaces	Over metal, smooth BUR, modified bitumen, and other approved surfaces
USE WITH FABRIC/SEAM TAPE	✓	✓	✓
PART NUMBER	KST020475 SILVER	KST020480 SILVER	KST020418 SILVER
SIZE	5-GALLON, 55-GALLON DRUM	5-GALLON, 55-GALLON DRUM	5-GALLON
VOC	435 ± 10 g/L	450 ± 10 g/L	506 ± 10 g/L
<b>APPROVALS</b>			



# Asphalt Emulsion Coatings

Asphalt Emulsion Coatings are manufactured through a unique process that allows asphalt to mix with water. This easy-to-apply coating can be used in a variety of applications.



PRODUCT NAME	FIBERED ASPHALT EMULSION	NON-FIBERED ASPHALT EMULSION
TECHNOLOGY	ASPHALT	ASPHALT
FEATURES & BENEFITS	<ul style="list-style-type: none"> <li>Easy-to-apply coating</li> <li>Outstanding abrasion resistance</li> <li>Exceptional weathering characteristics to prevent alligating and hardening</li> <li>Reinforced with Poly-fibers for extra strength and durability</li> <li>Meets ASTM D - 1227, Type II, Class 1</li> </ul>	<ul style="list-style-type: none"> <li>Easy-to-apply coating</li> <li>Outstanding abrasion resistance</li> <li>Exceptional weathering characteristics to prevent alligating and hardening</li> <li>Meets ASTM D - 1227, Type II, Class 1</li> </ul>
RECOMMENDED SUBSTRATES	Recommended for resurfacing extremely dried-out or heavily alligatored surfaces on smooth built-up and modified bitumen roofs. Surface can then be coated with UNIFLEX Elastomeric or Aluminum Coating systems.	Recommended for resurfacing extremely dried-out or heavily alligatored surfaces on smooth built-up and modified bitumen roofs. Surface can then be coated with UNIFLEX Elastomeric or Aluminum Coating systems.
USE WITH FABRIC	✓	✓
PART NUMBER	KST040312 BLACK	KST040314 BLACK
SIZE	5-GALLON, 55-GALLON DRUM	5-GALLON, 55-GALLON DRUM
VOC	< 0 g/L	450 ± 10 g/L
<b>APPROVALS</b>		

Refer to the current MSDS/EDS for specific VOCs (calculated per 40 CFR 59.406).





# Base Coats & Primers

Proper surface preparation is key to a successful coating job. UNIFLEX® offers a full line of base coats and primers.



PRODUCT NAME	SOLVENT BASED ELASTOMERIC GRAY	PREMIUM ACRYLIC ELASTOMERIC GRAY	COMMERCIAL GRADE ACRYLIC ELASTOMERIC GRAY	SINGLE PLY ELASTOMERIC ACRYLIC GRAY BASE COAT	ELASTOMERIC MB BASE COAT	RUST INHIBITIVE METAL PRIMER	ACRYLIC RUST INHIBITIVE METAL PRIMER	BLACK ASPHALT PRIMER	BOND-IT WASH PRIMER	ACRYLIC CONCRETE PRIMER
<b>TECHNOLOGY</b>	SOLVENT-BASED THERMOPLASTIC	100% ACRYLIC ELASTOMERIC	100% ACRYLIC ELASTOMERIC	ACRYLIC	100% ACRYLIC ELASTOMERIC	ALKYD	ACRYLIC	ASPHALT	100% WATER BASED	ACRYLIC
<b>FEATURES &amp; BENEFITS</b>	<ul style="list-style-type: none"> <li>Premium grade</li> <li>Outstanding adhesion</li> <li>Resists cracking and peeling in ponding water situations</li> <li>Excellent waterproofing capabilities</li> <li>Can be used as a base coat or finish coat</li> </ul>	<ul style="list-style-type: none"> <li>Premium grade</li> <li>Outstanding adhesion</li> <li>Resists cracking and peeling</li> <li>Excellent waterproofing capabilities</li> <li>Can be used as a base coat or finish coat</li> </ul>	<ul style="list-style-type: none"> <li>Commercial grade</li> <li>Excellent adhesion</li> <li>Great performance and value</li> <li>Can be used as a base coat or finish coat</li> </ul>	<ul style="list-style-type: none"> <li>Cross-linking acrylic polymer for enhanced adhesion</li> <li>Must be topcoated by UNIFLEX Elastomeric Finish Coat</li> </ul>	<ul style="list-style-type: none"> <li>Outstanding adhesion</li> <li>Resists cracking and peeling</li> <li>Excellent waterproofing capabilities</li> <li>Must be topcoated by UNIFLEX Elastomeric Finish Coat</li> </ul>	<ul style="list-style-type: none"> <li>Superior corrosion resistance</li> <li>Meets Federal Specification TT-P-636D</li> </ul>	<ul style="list-style-type: none"> <li>Corrosion-resistant primer for metal roof surfaces</li> <li>Good adhesion to difficult surfaces, including pre-finished metal roofing containing Fluorocarbon</li> </ul>	<ul style="list-style-type: none"> <li>Restores oils and rejuvenates dried-out asphalt surfaces, such as smooth surface built-up and modified bitumen roofs prior to coating with UNIFLEX Aluminum Coatings</li> </ul>	<ul style="list-style-type: none"> <li>Acts as a cleaner primer for EPDM membranes by breaking the chemical bond of the inorganics on the surface of the rubber membrane, preparing the surface for the UNIFLEX Elastomeric Coating system</li> </ul>	<ul style="list-style-type: none"> <li>High-performance primer</li> <li>Highly alkali and efflorescence resistant</li> <li>Can be applied to surfaces with a pH of 6 to 13</li> </ul>
<b>RECOMMENDED SUBSTRATES</b>	Over metal, polyurethane foam, smooth BUR, modified bitumen, granular cap sheets, and other approved surfaces	As a base coat, can be used over metal, concrete, and polyurethane foam. Refer to Product Data Sheet for additional recommended substrates if used as a finish coat.	As a base coat, can be used over metal, concrete, and polyurethane foam. Refer to Product Data Sheet for additional recommended substrates if used as a finish coat.	Over weathered EPDM, Hypalon® TPO, and other approved single-ply membranes	Over smooth BUR, modified bitumen, granular cap sheets, and other approved surfaces	All types of metal surfaces, including iron and steel, where corrosion is a problem	All types of metal surfaces, including iron and steel, where corrosion is a problem. Over pre-finished metal surfaces including Fluorocarbon (Kynar®)	Over smooth BUR and modified bitumen	Over Single Ply	Seals and adheres to concrete
<b>USE WITH FABRIC/SEAM TAPE</b>	✓	✓	✓	✓	✓					
<b>PART NUMBER</b>	KST042200 GRAY	KST041320 GRAY	KST041520 GRAY	KST041321 GRAY	KST041510 WHITE KST041512 GRAY	KST034520 RED	KST036520 WHITE	KST020412 BLACK	KST038620 CLEAR	KST036500 WHITE
<b>SIZE</b>	5-GALLON, 55-GALLON DRUM	5-GALLON, 55-GALLON DRUM, 275-GALLON TOTE	5-GALLON, 55-GALLON DRUM	5-GALLON, 55-GALLON DRUM	5-GALLON, 55-GALLON DRUM, 275-GALLON TOTE (WHITE)	5-GALLON, 55-GALLON DRUM	5-GALLON, 55-GALLON DRUM	5-GALLON, 55-GALLON DRUM	5-GALLON	5-GALLON
<b>VOC</b>	< 250 g/L	< 50 g/L	< 50 g/L	≤ 50 g/L	< 50 g/L	≤ 400 g/L	< 50 g/L	< 350 g/L	0 g/L	96 g/L
<b>APPROVALS</b>										

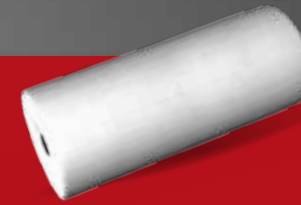
Refer to the current MSDS/EDS for specific VOCs (calculated per 40 CFR 59.406).





# Patch & Repair: Roof Coatings, Fabrics & Tapes

Stop leaks and roof deterioration with our patch and repair products.



PRODUCT NAME	ACRYLIC PATCHING CEMENT	SLOPE BUILDER	SKYLIGHT RESTORATIVE CLEAR COATING	WET-DRY ROOF CEMENT	POLYESTER FABRIC	BUTYL SEAM TAPE	MS HYBRID TAPE
<b>TECHNOLOGY</b>	ACRYLIC BASED ELASTOMERIC RESIN	100% ACRYLIC ELASTOMERIC	100% ACRYLIC	ASPHALT	POLYESTER	BUTYL RUBBER	MS HYBRID
<b>FEATURES &amp; BENEFITS</b>	<ul style="list-style-type: none"> <li>Provides a long-lasting, durable, resilient patch</li> <li>UV and water resistant with excellent resistance to mildew attack and weathering</li> </ul>	<ul style="list-style-type: none"> <li>Designed to build up low-lying areas on flat, low-sloped roofs</li> <li>Provides protective waterproofing solutions</li> </ul>	<ul style="list-style-type: none"> <li>Protective coating over fiberglass skylight panels restoring the panel to its original condition</li> <li>Provides a durable, weather-resistant finish while increasing the panel's light translucent value</li> </ul>	<ul style="list-style-type: none"> <li>Single-component, asbestos-free, asphalt-based cement designed for roofing applications</li> <li>Seals quickly, will not pull apart or lose its bond, remains soft and pliable, and resists temperature change</li> <li>Can be applied to wet or dry surfaces, even underwater</li> </ul>	<ul style="list-style-type: none"> <li>Exceptionally strong material</li> <li>Accommodates expansion and contraction</li> <li>Use for reinforcement for all general roof repairs, seams, flashings, penetration areas and other roof detail areas</li> </ul>	<ul style="list-style-type: none"> <li>Self-adhering butyl rubber waterproofing tape</li> <li>Maintains its flexibility necessary to respond to dynamics of roof movement</li> <li>Seals seams, flashings, penetration areas and other roof detail areas</li> </ul>	<ul style="list-style-type: none"> <li>Creates immediate adhesion to roof substrate even underwater</li> <li>Applies and adheres to wet surface 0°F and maintains its thermal stability up to 300°F</li> <li>Doesn't need to be coated over</li> </ul>
<b>RECOMMENDED SUBSTRATES</b>	Repairs metal roof seams, penetration and wall flashings, small holes, splits, cracks, blisters in built-up, modified bitumen, polyurethane foam, and concrete	To create roof crickets around HVAC and around rooftop equipment. It is ideal for building up low-lying areas near drains, in valleys, along parapet walls, and in the field of the roof prior to installing UNIFLEX Fluid Applied Roofing Systems	Over fiberglass skylight panels	Adheres to asphaltic-based roofing substrates	Use in three-course methods with embedded fabrics with elastomeric or emulsion coatings	Seals seams, flashings, penetration areas and other roof detail areas	Used for repairing roofs prior to coating applications to seal holes, tears, and seams in gutters, flashings, skylights, roofing membranes, and more
<b>USE WITH FABRIC/SEAM TAPE</b>	✓	✓	✓	✓			
<b>PART NUMBER</b>	KST041220 WHITE	KST0SLPBD GRAY	KST019100 CLEAR	KST058600 BLACK	KST20385A WHITE KST20385B WHITE KST020385 WHITE	KST020802 KST020804 KST020806 KST020808	KST058004 KST058006
<b>SIZE</b>	2-GALLON, 5-GALLON	5-GALLON	5-GALLON	10 OZ CARTRIDGE, 1-GALLON, 3-GALLON, 5-GALLON	6" X 324', 12" X 324', 40" X 324'	2" X 50', 4" X 50', 6" X 50', 8" X 50'	4" X 50', 6" X 50'
<b>VOC</b>	< 50 g/L	0 g/L	< 50 g/L	<260 g/L	N/A	N/A	N/A

Refer to the current MSDS/EDS for specific VOCs (calculated per 40 CFR 59.406).





# Patch & Repair: Roofing Sealants

Stop leaks and roof deterioration with our patch and repair products.



PRODUCT NAME	TRIPOLYMER ROOFING SEALANT	MS HYBRID ROOFING SEALANT	POLYURETHANE ROOFING SEALANT	FAST-SKIN POLYURETHANE ROOFING SEALANT	SOLVENT-BASED BRUSHABLE ROOF REPAIR SEALANT	TPO & PVC ADHESION PROMOTER
TECHNOLOGY	SOLVENT	MS HYBRID	POLYURETHANE	POLYURETHANE	SOLVENT	SOLVENT
FEATURES & BENEFITS	<ul style="list-style-type: none"> <li>Primerless application</li> <li>Excellent adhesion to many building surfaces, even when damp</li> <li>Exceptional elongation &amp; flexibility</li> </ul>	<ul style="list-style-type: none"> <li>Applies, adheres and cures underwater</li> <li>2 products in 1-lap adhesive &amp; scrim edge sealant</li> <li>Remains flexible and will not shrink during curing</li> </ul>	<ul style="list-style-type: none"> <li>Single component urethane sealant that withstands extreme weather conditions</li> <li>Primerless adhesion</li> <li>Permanently flexible</li> </ul>	<ul style="list-style-type: none"> <li>Single-component urethane sealant that cures by reaction with atmospheric moisture</li> <li>Fast set-up, no shrinkage</li> <li>Both bonding &amp; sealing applications</li> </ul>	<ul style="list-style-type: none"> <li>Single-component, elastic sealant</li> <li>Withstands water contact immediately after application</li> <li>Fibered for strength, will function in severe UV, heat, acid rain, and intermittent foot traffic</li> <li>One-step application with no primer required</li> <li>Applies in extreme temperature ranges, including wet and icy conditions</li> </ul>	<ul style="list-style-type: none"> <li>Solvent-based primer used to prepare TPO and PVC membranes for improved adhesion to UNIFLEX MS Hybrid Roofing Sealant</li> <li>Requires no additional products, such as cleaners, rollers, or brushes</li> </ul>
RECOMMENDED SUBSTRATES	Adheres to coated metal (Kynar®) brick, concrete, glass, vinyl, steel, tile, wood, asphalt and other common roof substrates	Adheres to coated metal (Kynar®) EPDM, primed TPO, primed PVC, metal, and other common roof substrates *Primed with UNIFLEX TPO & PVC Adhesion Promoter	Adheres to steel, aluminum, coated metal (Kynar®), masonry, wood, steel, asphalt shingles, and other common roof substrate	Adheres to sheet metal, brick, wood, tile, steel, asphalt shingles, and other common roof substrates	Adheres to many roofing materials, including damp, oily, or slightly dirty surfaces Not for use on EPDM	Ideal for priming the surface of tears, holes, and anywhere else a sealant is needed to adhere to TPO and PVC
TACK FREE/ CURE TIME	2 Hrs 4 to 6 Days	40 Min / 4 Days 75 Min / 1 Day (Clear Only)	3 Hrs 1 Day	40 Min 1 Day	4 Hrs 5 Days	N/A N/A
APPLICATION TEMP/ SERVICE TEMP	0°F to 140°F -40°F to 180°F	30°F to 120°F -40°F to 200°F	-20°F to 150°F -20°F to 150°F	-20°F to 150°F -20°F to 150°F	-40°F to 250°F -40°F to 250°F	0°F to 100°F N/A
PART NUMBER	KST058400, KST058401 WHITE KST058410, KST058411 BLACK KST058450, KST058451 CLEAR	KST058300 WHITE KST058310 BLACK KST058350 CLEAR	KST058100 WHITE KST058110 BLACK KST058120 GRAY	KST058200 WHITE KST058210 BLACK	KST058500 WHITE KST058510 BLACK KST058550 CLEAR	KST058700 CLEAR
FILL LEVEL	10.3 OZ CARTRIDGE, 29 OZ CARTRIDGE	10.1 OZ CARTRIDGE (WHITE, BLACK ONLY) 9.5 OZ CARTRIDGE (CLEAR ONLY)	10.1 OZ CARTRIDGE	10.1 OZ CARTRIDGE	1-GALLON	14 OZ AEROSOL CAN
VOC	3.84% wt	<1% wt	.25% wt	.39% wt	<550 g/L	<50 g/L

Refer to the current MSDS/EDS for specific VOCs (calculated per 40 CFR 59.406).





### ELASTOMERIC FINISH COATS

PRODUCT DESCRIPTION	SMIS CODE	PRODUCT NUMBER	SIZE CODE	SIZE DESCRIPTION
Premium Solvent Based Elastomeric White	650427750	KST042100	20	5-GALLON
Premium Solvent Based Elastomeric White	650427800	KST042100	27	55-GALLON DRUM
Premium Acrylic Elastomeric White	009921156	KST041300	20	5-GALLON
Premium Acrylic Elastomeric White	009921164	KST041300	27	55-GALLON DRUM
Premium Acrylic Elastomeric White	001556604	KST041300	28	275-GALLON TOTE
Premium Acrylic Elastomeric Black	001556638	KST041325	20	5-GALLON
Premium Acrylic Elastomeric Black	001915750	KST041325	27	55-GALLON DRUM
Premium Acrylic Elastomeric Sedona Tan	650340490	KST41300T	20	5-GALLON
Premium Acrylic Elastomeric Sedona Tan	650340524	KST41300T	27	55-GALLON DRUM
Premium Acrylic Elastomeric Adobe Light Tan	650367865	KST04130T	20	5-GALLON
Premium Acrylic Elastomeric Adobe Light Tan	650367774	KST04130T	27	55-GALLON DRUM
Premium Acrylic Elastomeric Tint Bases - Pastel	650118003	KST04130P	20	5-GALLON
Premium Acrylic Elastomeric Tint Bases - Deep	650118011	KST04130D	20	5-GALLON
Premium Acrylic Elastomeric Tint Bases - Accent	650118029	KST04130A	20	5-GALLON
Commercial Grade Acrylic Elastomeric White	009921248	KST041500	20	5-GALLON
Commercial Grade Acrylic Elastomeric White	009921255	KST041500	27	55-GALLON DRUM
Commercial Grade Acrylic Elastomeric White	001512920	KST041500	28	275-GALLON TOTE

### ALUMINUM FINISH COATS

PRODUCT DESCRIPTION	SMIS CODE	PRODUCT NUMBER	SIZE CODE	SIZE DESCRIPTION
UNIFLEX 500 Fibered Aluminum Silver	009921032	KST020475	20	5-GALLON
UNIFLEX 500 Fibered Aluminum Silver	009921040	KST020475	27	55-GALLON DRUM
UNIFLEX 300 Fibered Aluminum Silver	009921057	KST020480	20	5-GALLON
UNIFLEX 300 Fibered Aluminum Silver	008942385	KST020480	27	55-GALLON DRUM
UNIFLEX SUPERBRITE Silver Finish Coat	009921024	KST020418	20	5-GALLON

### ASPHALT EMULSION ROOF COATINGS

PRODUCT DESCRIPTION	SMIS CODE	PRODUCT NUMBER	SIZE CODE	SIZE DESCRIPTION
Fibered Asphalt Emulsion	001512912	KST040312	20	5-GALLON
Fibered Asphalt Emulsion	001556570	KST040312	27	55-GALLON DRUM
Non-Fibered Asphalt Emulsion	009921123	KST040314	20	5-GALLON
Non-Fibered Asphalt Emulsion	009921131	KST040314	27	55-GALLON DRUM

### BASE COATS & PRIMERS

PRODUCT DESCRIPTION	SMIS CODE	PRODUCT NUMBER	SIZE CODE	SIZE DESCRIPTION
Premium Solvent Based Elastomeric Gray	650427818	KST042200	20	5-GALLON
Premium Solvent Based Elastomeric Gray	650427826	KST042200	27	55-GALLON DRUM
Premium Acrylic Elastomeric Gray	009921206	KST041320	20	5-GALLON
Premium Acrylic Elastomeric Gray	009921214	KST041320	27	55-GALLON DRUM
Premium Acrylic Elastomeric Gray	001556620	KST041320	28	275-GALLON TOTE
Elastomeric MB White Base Coat	009921263	KST041510	20	5-GALLON
Elastomeric MB White Base Coat	009921271	KST041510	27	55-GALLON DRUM
Elastomeric MB White Base Coat	001556646	KST041510	28	275-GALLON TOTE
Elastomeric MB Gray Base Coat	650367840	KST041512	20	5-GALLON
Elastomeric MB Gray Base Coat	650367899	KST041512	27	55-GALLON DRUM
Commercial Grade Acrylic Elastomeric Gray	009921289	KST041520	20	5-GALLON
Commercial Grade Acrylic Elastomeric Gray	009921297	KST041520	27	55-GALLON DRUM
Black Asphalt Primer	009921008	KST020412	20	5-GALLON
Black Asphalt Primer	009921016	KST020412	27	55-GALLON DRUM
Bond-It Wash Primer	009921115	KST038620	20	5-GALLON
SPE Gray Base Coat	009921222	KST041321	20	5-GALLON
SPE Gray Base Coat	009921230	KST041321	27	55-GALLON DRUM
Rust Inhibitive Metal Primer - Red	009921107	KST034520	20	5-GALLON
Rust Inhibitive Metal Primer - Red	001556562	KST034520	27	55-GALLON DRUM
Acrylic Rust Inhibitive Primer - White	650174808	KST036520	20	5-GALLON
Acrylic Rust Inhibitive Primer - White	650389992	KST036520	27	55-GALLON DRUM
Acrylic Concrete Primer	650467731	KST036500	20	5-GALLON

### PATCH & REPAIR: ROOF COATINGS, FABRICS, & TAPES

PRODUCT DESCRIPTION	SMIS CODE	PRODUCT NUMBER	SIZE CODE	SIZE DESCRIPTION	QTY PER CASE
UNIFLEX Seam Tape 2" X 50'	009921073	KST020802	99 ROLL	2" X 50'	12
UNIFLEX Seam Tape 4" X 50'	009921081	KST020804	99 ROLL	4" X 50'	6
UNIFLEX Seam Tape 6" X 50'	009921099	KST020806	99 ROLL	6" X 50'	4
UNIFLEX Seam Tape 8" X 50'	001556554	KST020808	99 ROLL	8" X 50'	3
UNIFLEX Polyester Fabric 6" X 324'	009921339	KST20385A	99 ROLL	6" X 324'	1
UNIFLEX Polyester Fabric 12" X 324'	650201742	KST20385B	99 ROLL	12" X 324'	1
UNIFLEX Polyester Fabric 40" X 324'	009920992	KST020385	99 ROLL	40" X 324'	1
Acrylic White Patching Cement	009921149	KST041220	20	5-GALLON	1
Acrylic White Patching Cement	650467673	KST041220	17	2-GALLON	2
UNIFLEX Slope Builder	650391311	KST0SLPBD	51	5-GALLON	1
Skylight Restorative Clear Coating	009920984	KST019100	20	5-GALLON	1



# Part Numbers

SKU Listings

## PATCH & REPAIR: ROOFING SEALANTS & TAPES

PRODUCT DESCRIPTION	SMIS CODE	PRODUCT NUMBER	SIZE CODE	SIZE DESCRIPTION	QTY PER CASE
Polyurethane Roofing Sealant - White	650432925	KST058100	01 CART	10.1 OZ	24
Polyurethane Roofing Sealant - Black	650436256	KST058110	01 CART	10.1 OZ	24
Polyurethane Roofing Sealant - Gray	650432982	KST058120	01 CART	10.1 OZ	24
Fast-Skin Polyurethane Roofing Sealant - White	650433006	KST058200	01 CART	10.1 OZ	24
Fast-Skin Polyurethane Roofing Sealant - Black	650433022	KST058210	01 CART	10.1 OZ	24
MS Hybrid Roofing Sealant - White	650433089	KST058300	01 CART	10 OZ	24
MS Hybrid Roofing Sealant - Black	650433097	KST058310	01 CART	10 OZ	24
MS Hybrid Roofing Sealant - Clear	650433105	KST058350	01 CART	9.5 OZ	24
Tripolymer Roofing Sealant - Clear	650433121	KST058450	01 CART	10.3 OZ	24
Tripolymer Roofing Sealant - Clear	650433188	KST058451	GQ CART	29 OZ	6
Tripolymer Roofing Sealant - White	650433196	KST058400	01 CART	10.3 OZ	24
Tripolymer Roofing Sealant - White	650442635	KST058401	GQ CART	29 OZ	6
Tripolymer Roofing Sealant - Black	650433212	KST058410	01 CART	10.3 OZ	24
Tripolymer Roofing Sealant - Black	650433220	KST058411	GQ CART	29 OZ	6
Solvent-based Brushable Roof Repair Sealant - Clear	650433253	KST058550	16 GAL	1-GALLON	4
Solvent-based Brushable Roof Repair Sealant - White	650433261	KST058500	16 GAL	1-GALLON	4
Solvent-based Brushable Roof Repair Sealant - Black	650433279	KST058510	16 GAL	1-GALLON	4
TPO & PVC Adhesion Promoter	650433311	KST058700	21 AERO CAN	14 OZ	6
Wet-Dry Roof Cement	650441769	KST058600	01 CART	10 OZ	24
Wet-Dry Roof Cement	650442643	KST058600	16 GAL	1-GALLON	4
Wet-Dry Roof Cement	650442692	KST058600	30	3-GALLON	1
Wet-Dry Roof Cement	650442684	KST058600	20	5-GALLON	1
MS Hybrid 4" Roof Bonding Tape - Fleece Backed	650433378	KST058004	99 ROLL	4" X 50'	6
MS Hybrid 6" Roof Bonding Tape - Fleece Backed	650433386	KST058006	99 ROLL	6" X 50'	4



**UNIFLEX<sup>®</sup>**  
Fluid Applied Roofing Systems

**1-888-321-3539** or visit **[uniflexroof.com](http://uniflexroof.com)**.

**101 PROSPECT AVE NW, CLEVELAND, OHIO**