

FECN14 CWIS 131800

THIRTY DAY ICE OUTLOOK FOR THE WESTERN AND CENTRAL ARCTIC FOR MID-SEPTEMBER TO MID-OCTOBER ISSUED BY ENVIRONMENT CANADA ON 13 SEPTEMBER 2024. THE NEXT 30 DAY OUTLOOK WILL BE ISSUED ON 1 OCTOBER 2024.

Summary for August 28 to September 8.

Average air temperatures were above normal over most of the forecast area except below normal over the western Alaskan coast. Average air temperatures were near normal over Peel Sound, Larsen Sound, Coronation Gulf and Queen Maud Gulf. Ice melt is earlier than normal and more extensive than normal over all forecast areas that have remaining ice except over a few small areas in northern M'Clure Strait and eastern M'Clintock Channel. Ice melt in most areas has exceeded the climatological ice minima.

Weather forecast for mid-September to mid-October.

Air temperatures are forecast to be near to below normal over the western Alaskan coast. Elsewhere, air temperatures are forecast to be above normal.

Southeastern Beaufort Sea.

September 13-October 9

- Bergy water or ice free.

October 10-15

- Bergy water or ice free with occasional areas of 4-6 tenths new ice in sheltered bays along the coast.

Amundsen Gulf.

September 13-October 15

- Ice free.

Prince of Wales Strait.

September 13-30

- Bergy water with occasional areas of 1-3 tenths old ice in the extreme northern section.

October 1-15

- Bergy water except 1-3 tenths multi-year ice in the extreme northern section.

Northern Alaskan Coast.

September 13-October 9

- Bergy water or ice free.

October 10-15

- Bergy water or open water with areas of 7-8 tenths new ice along the coast.

Western Alaskan Coast.

September 13-October 9

- Ice free except bergy water in the extreme northeastern section.

October 10-15

- Ice free with areas of 7-8 tenths new ice along the coast.
- Bergy water in the extreme northeastern section.

Northern Beaufort Sea south of 75°N.

September 13-25

- Bergy water with occasional areas of 1-3 tenths old ice in the extreme northern section.
- Elsewhere, bergy water.

September 26-October 7

- 1-3 tenths new, first-year and old ice with areas of 4-6 tenths new, first-year and old ice in the extreme northern section.

October 8-15

- 7-8 tenths grey, second-year and multi-year ice with areas of 9-9+ tenths grey-white, second-year and multi-year ice in the northern section.
- Elsewhere, bergy water with areas of 4-6 tenths new, grey, second-year and multi-year ice.

Arctic Ocean north of 75°N.

September 13-25

- 1-3 tenths first-year and old ice with areas 4-6 tenths first-year and old ice in the southern section.
- 9-9+ tenths first-year and old ice in the northeastern section.
- Elsewhere, 7-8 tenths first-year and old ice with areas of 9-9+ tenths first-year and old ice.

September 26-October 7

- 4-6 tenths ice in the extreme southern section.
- 9-9+ tenths ice in the northeastern section.
- Elsewhere, 7-8 tenths ice with areas of 9-9+ tenths ice.
- New ice beginning to form between the floes.

October 8-15

- 7-8 tenths grey, grey-white, second-year and multi-year ice in the extreme southern section.
- Elsewhere, 9-9+ tenths grey-white, second-year and multi-year ice.

Coronation Gulf.

September 13-30

- Ice free.

October 1-15

- Open water to ice free.

Queen Maud Gulf.

September 13-30

- Ice free except bergy water northeast of King William Island.

October 1-15

- Open water to ice free except bergy water northeast of King William Island.

Victoria Strait – Larsen Sound.

September 13-October 15

- Bergy water.

Peel Sound.

September 13-October 8

- Bergy water.

October 9-12

- 1-3 tenths new ice in the northern section.
- Elsewhere, bergy water.

October 13-15

- 1-3 tenths new ice.

M'Clintock Channel.

September 13-30

- 1-3 tenths first-year ice including a trace of old ice in the southern section.
- 4-6 tenths first-year ice including up to 1 tenth old ice with areas of 7-8 tenths first-year ice including up to 1 tenth old ice in the northern section.

October 1-11

- 1-3 tenths second-year ice including a trace of multi-year ice in the southern section.
- 4-6 tenths second-year ice including up to 1 tenth multi-year ice with areas of 7-8 tenths second-year ice including up to 1 tenth multi-year ice in the northern section.

October 12-15

- 4-6 tenths new and second-year ice including a trace of multi-year ice in the southern section.
- 7-8 tenths new and second-year ice including up to 1 tenth multi-year ice in the northern section.

Viscount Melville Sound.

September 13-24

- 1-3 tenths first-year and old ice in the extreme western section and near the coast of Stefansson Island.
- 1-3 tenths first-year and old ice with areas of 7-8 tenths first-year and old ice in the extreme northeastern section.
- 9-9+ tenths first-year and old ice along the coast and in sheltered bays near Stefansson Island.
- Elsewhere, bergy water with occasional areas of 1-3 tenths first-year and old ice.

September 25-October 8

- 4-6 tenths new, first-year and old ice with areas of 7-8 tenths new, first-year and old ice in the northeastern section.
- 7-8 tenths first-year and old ice along the coasts of Stefansson Island.
- Elsewhere, bergy water with areas of 1-3 tenths new, first-year and old ice.

October 9-15

- 7-8 tenths new, grey, second-year and multi-year ice with areas of 9-9+ tenths new, grey, second-year and multi-year ice in the northern section.

- Bergy water with areas of 7-8 tenths new, second-year and multi-year ice in the southern section.

M'Clure Strait.

September 13-30

- 4-6 tenths first-year and old ice with areas of 9-9+ tenths first-year and old ice in the northern section.

- 1-3 tenths first-year and old ice in the southern section.

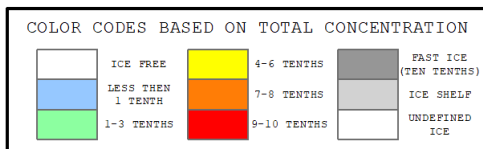
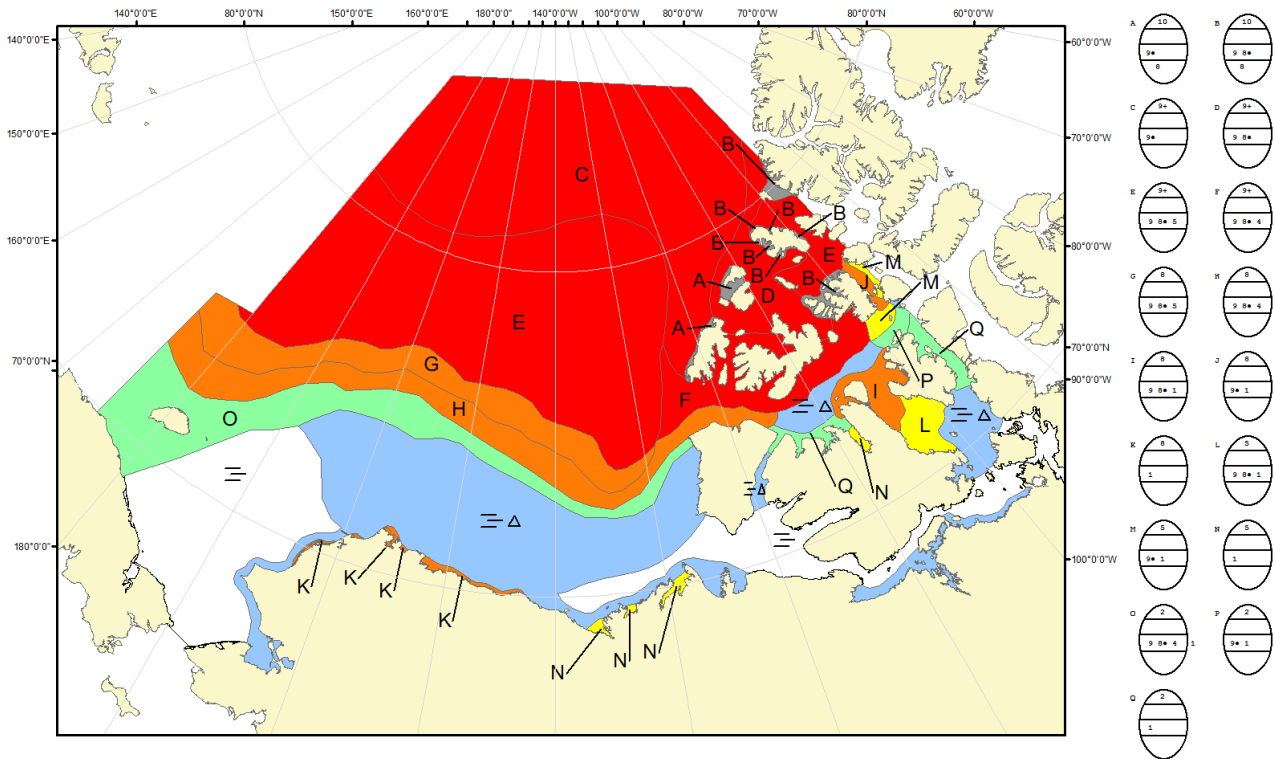
October 1-8

- 4-6 tenths new, second-year and multi-year ice with areas of 9-9+ tenths new, second-year and multi-year ice in the northern section.

- 1-3 tenths new, second-year and multi-year ice with areas of 4-6 tenths new, second-year and multi-year ice in the southern section.

October 9-15

- 4-6 tenths new, grey, second-year and multi-year ice with areas of 9-9+ tenths grey, second-year and multi-year ice.



North American Ice Service /
 Service des glaces de l'Amérique du Nord
 ICE FORECAST - 30 DAY
 PRÉVISIONS DES GLACES - 30 JOURS
 VALID/VALIDE: 15 OCT/OCT 2024