

FECN15 CWIS 131800

THIRTY DAY ICE OUTLOOK FOR HUDSON AND FOXE FOR MID-SEPTEMBER TO MID-OCTOBER ISSUED BY ENVIRONMENT CANADA ON 13 SEPTEMBER 2024.

THE NEXT 30 DAY OUTLOOK WILL BE ISSUED ON 1 OCTOBER 2024.

Summary for August 28 to September 8.

Average air temperatures have been below normal over Frobisher Bay, Cumberland Sound, Davis Strait, Foxe Basin, Hudson Strait and parts of eastern Hudson Bay (including James Bay). Average air temperatures have been near normal over central Hudson Bay and Ungava Bay. Elsewhere, average air temperatures have been above normal. Ice melt continues to be near normal throughout the region except for the persistence of above normal ice concentrations in Fury and Hecla Strait.

Weather forecast for mid-September to mid-October.

Air temperatures are forecast to be above normal values over all areas.

Southern Labrador Coast.

September 13-October 15

- Bergy water.

Northern Labrador Coast.

September 13-October 15

- Bergy water.

Lake Melville.

September 13-October 15

- Ice free.

Southern Davis Strait.

September 13-October 15

- Bergy water.

Northern Davis Strait.

September 13-October 15

- Bergy water.

Frobisher Bay.

September 13-October 15

- Bergy water.

Cumberland Sound.

September 13-October 15

- Bergy water.

Hudson Strait.

September 13-October 15

- Bergy water.

Ungava Bay.

September 13-October 15

- Bergy water.

Foxe Basin.

September 13-30

- Open water to ice free with areas of 4-6 tenths first-year ice in the extreme northwestern section.
- 4-6 tenths first-year ice in eastern Fury Hecla Strait and 9-9+ tenths first-year ice in western Fury and Hecla Strait.

October 1-10

- Open water to ice free with areas of 4-6 tenths second-year ice in the extreme northwestern section.
- 7-8 tenths second-year ice with areas of 9-9+ tenths second-year ice in Fury and Hecla Strait.

October 11-15

- Open water to ice free with areas of 7-8 tenths second-year and new ice in the extreme northwestern section.
- 9-9+ tenths second-year and new ice in Fury and Hecla Strait.
- Elsewhere, open water to ice free with occasional areas of 1-3 tenths new ice in sheltered bays and along parts of the coasts in the eastern section.

Northwestern Hudson Bay.

September 13-October 15

- Ice free except bergy water in the extreme northeastern section.

Eastern Hudson Bay – James Bay.

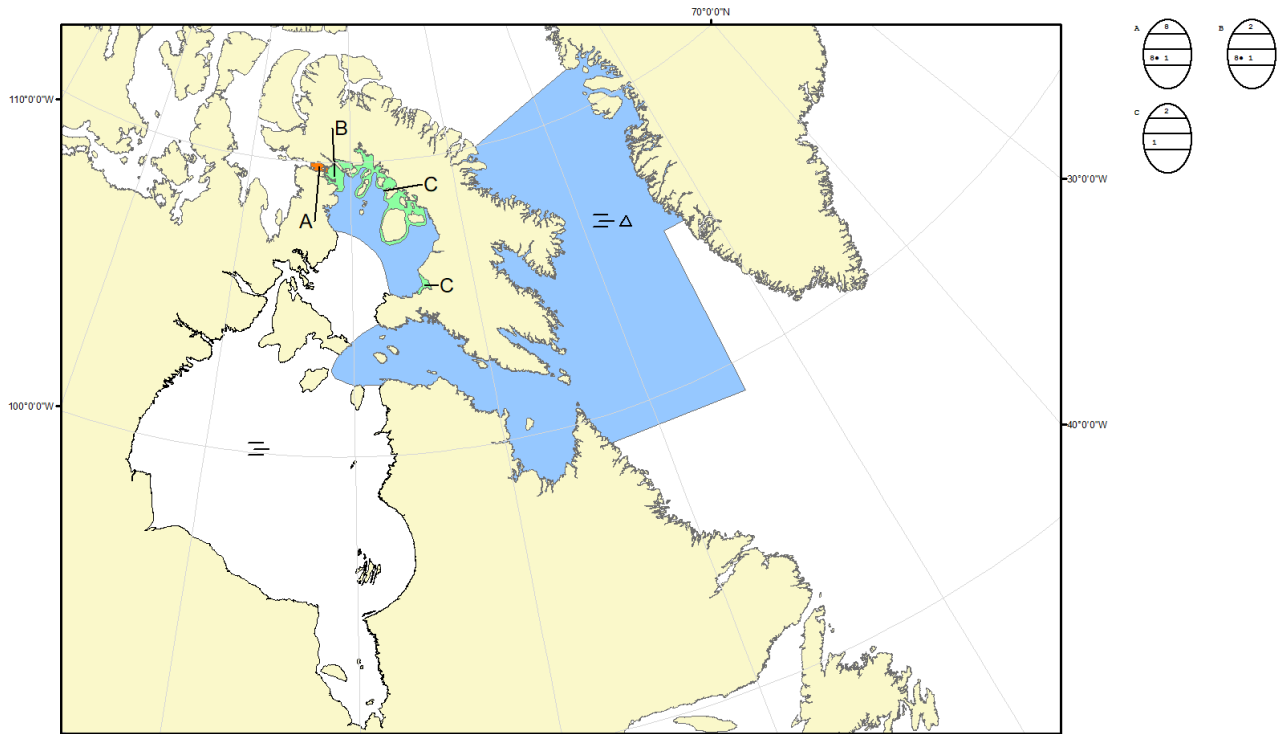
September 13-October 15

- Ice free except bergy water in the extreme northern section.






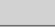



Southwestern Hudson Bay.

September 13-October 15

- Ice free.



COLOR CODES BASED ON TOTAL CONCENTRATION

	ICE FREE		4-6 TENTHS		FAST ICE (TEN TENTHS)
	LESS THEN 1 TENTH		7-8 TENTHS		ICE SHELF
	1-3 TENTHS		9-10 TENTHS		UNDEFINED ICE

**North American Ice Service /
Service des glaces de l'Amérique du Nord
ICE FORECAST - 30 DAY
PRÉVISIONS DES GLACES - 30 JOURS
VALID/VALIDE: 15 OCT/OCT 2024**