

FECN16 CWIS 131800

THIRTY DAY ICE OUTLOOK FOR THE EASTERN AND NORTHERN ARCTIC FOR MID-SEPTEMBER TO MID-OCTOBER ISSUED BY ENVIRONMENT CANADA ON 13 SEPTEMBER 2024. THE NEXT 30 DAY OUTLOOK WILL BE ISSUED ON 1 OCTOBER 2024.

### **Summary for August 28 to September 8.**

Average air temperatures were below normal over Gulf of Boothia, southern Prince Regent Inlet and over Baffin Island. Average air temperatures were above average over Kane Basin and northern Baffin Bay. Elsewhere, average air temperatures were near normal. In the Gulf of Boothia, ice melt is around 2 weeks later than normal over the northeastern section and around 3 weeks earlier than normal elsewhere. There is more ice melt than normal in western Norwegian Bay, McDougall Sound and Barrow Strait. There is more ice than normal in eastern Norwegian Bay and in northwestern Baffin Bay moving southwards into northwestern Baffin Bay from Kane Basin and more ice than normal in Wellington Channel moving southward from Penny Strait. Elsewhere, ice melt is near normal.

### **Weather forecast for mid-September to mid-October.**

Air temperatures are forecast to be above normal over all areas.

### **Northern Baffin Bay.**

September 13-22

- 1-3 tenths first-year and old ice with areas of 4-6 tenths first-year and old ice in the extreme northwestern section.
- Elsewhere, bergy water.

September 23-30

- 4-6 tenths first-year and old ice with areas of 7-8 tenths new, first-year and old ice drifting in from Kane Basin into the northwestern section towards the entrance to Jones Sound.
- 1-3 tenths first-year and old ice along the coast near Devon Island and drifting southward into the eastern entrance of Lancaster Sound.
- Elsewhere, bergy water.

October 1-8

- 4-6 tenths new, second-year and multi-year ice with areas of 9-9+ tenths grey, second-year and multi-year ice drifting in from Kane Basin into the northwestern section towards the entrance to Jones Sound.
- 1-3 tenths new, second-year and multi-year ice along the coast near Devon Island and drifting southward into the eastern entrance of Lancaster Sound.
- Elsewhere, bergy water.

October 9-15

- 7-8 tenths grey-white, second-year and multi-year ice with areas of 9-9+ tenths grey-white, second-year and multi-year ice drifting in from Kane Basin into the northwestern section towards the entrance to Jones Sound.
- 4-6 tenths grey, second-year and multi-year ice along the coast near Devon Island and drifting southward into the eastern entrance of Lancaster Sound.
- Elsewhere, bergy water.

### **Southwestern Baffin Bay.**

September 13-October 15

- Bergy water.

### **Pond and Navy Board Inlets.**

September 13-October 10

- Bergy water.

October 11-15

- 1-3 tenths new ice.

### **Admiralty Inlet.**

September 13-October 12

- Bergy water.

October 13-15

- Bergy water with areas of 1-3 tenths new ice.

### **Lancaster Sound.**

September 13-22

- Bergy water.

September 23-October 10

- Bergy water with areas of 1-3 tenths multi-year and new ice in the eastern section.

October 11-15

- 1-3 tenths new ice except 1-3 tenths multi-year and new ice with areas of 4-6 tenths multi-year and new ice in the extreme eastern section.

### **Barrow Strait.**

September 13-October 9

- Bergy water with areas of 4-6 tenths multi-year ice in the extreme western section.
- Elsewhere, bergy water with occasional areas of 1-3 tenths multi-year ice in the northeastern section.

October 10-15

- 1-3 tenths new and multi-year ice with areas of 4-6 tenths new and multi-year ice in the western section.
- Bergy water with areas of 1-3 tenths new and multi-year ice in the eastern section.

### **Prince Regent Inlet.**

September 13-30

- Bergy water with occasional areas of 1-3 tenths first-year ice along the coast in the extreme southeastern section.

October 1-9

- Bergy water.

October 10-15

- Bergy water with occasional areas of 1-3 tenths new ice.

## **Gulf of Boothia.**

September 13-30

- 1-3 tenths first-year ice in Committee Bay.
- 9-9+ tenths first-year ice along the northeastern coast of Committee Bay, including the entrance to Fury and Hecla Strait and along the coast of Baffin Island in the northeastern section.
- Elsewhere, bergy water except ice free in Pelly Bay.

October 1-15

- 1-3 tenths new and second-year ice in Committee Bay.
- 7-8 tenths new and second-year ice with areas of 9-9+ tenths new and second-year ice in the northeastern section.
- Elsewhere, bergy water with occasional areas of 1-3 tenths new and second-year ice except ice free in Pelly Bay.

## **Wellington Channel.**

September 13-October 5

- Bergy water with areas of 4-6 tenths multi-year ice.

October 6-15

- 1-3 tenths new and multi-year ice with areas of 4-6 tenths new and multi-year ice.

## **McDougall Sound.**

September 13-25

- Bergy water with occasional areas of 1-3 tenths old ice.

September 26-October 10

- 1-3 tenths new ice with areas of 4-6 tenths new ice including up to 2 tenths multi-year ice.

October 11-15

- 4-6 tenths new and multi-year ice with areas of 7-8 tenths new and multi-year ice.

## **Jones Sound.**

September 13-20

- Bergy water.

September 21-30

- 4-6 tenths old and new ice in the extreme eastern section.
- Elsewhere, bergy water with occasional areas of 1-3 tenths new ice.

October 1-15

- 4-6 tenths new and multi-year ice except 7-8 tenths grey, second-year and multi-year ice in the extreme eastern and western sections.

## **Norwegian Bay.**

September 13-18

- 1-3 tenths first-year and old ice.

September 19-30

- 4-6 tenths new, first-year and old ice with areas of 9-9+ tenths new, first-year and old ice.

October 1-10

- 7-8 tenths grey, second-year and multi-year ice with areas of 9-9+ tenths grey, second-year and multi-year ice.

October 11-15

- 9-9+ tenths grey-white, second-year and multi-year ice.

## **Eureka Sound.**

September 13-18

- Bergy water with areas of 1-3 tenths first-year and old ice in the southern section.

September 19-30

- 4-6 tenths new, first-year and old ice with areas of 7-8 tenths new, first-year and old ice.

October 1-8

- 7-8 tenths grey, second-year and multi-year ice with areas of 9-9+ tenths grey, second-year and multi-year ice.

October 9-15

- 9-9+ tenths grey-white, second-year and multi-year ice in the southern section.
- Consolidated grey-white, second-year and multi-year ice in the northern section.

## **Western Kane Basin.**

September 13-18

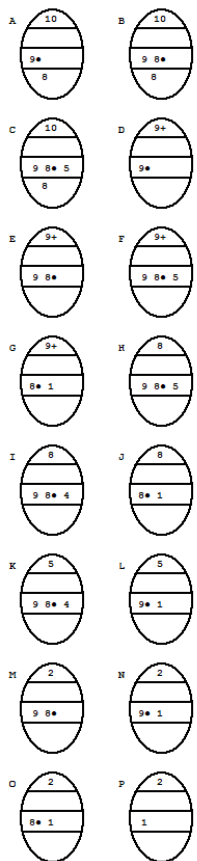
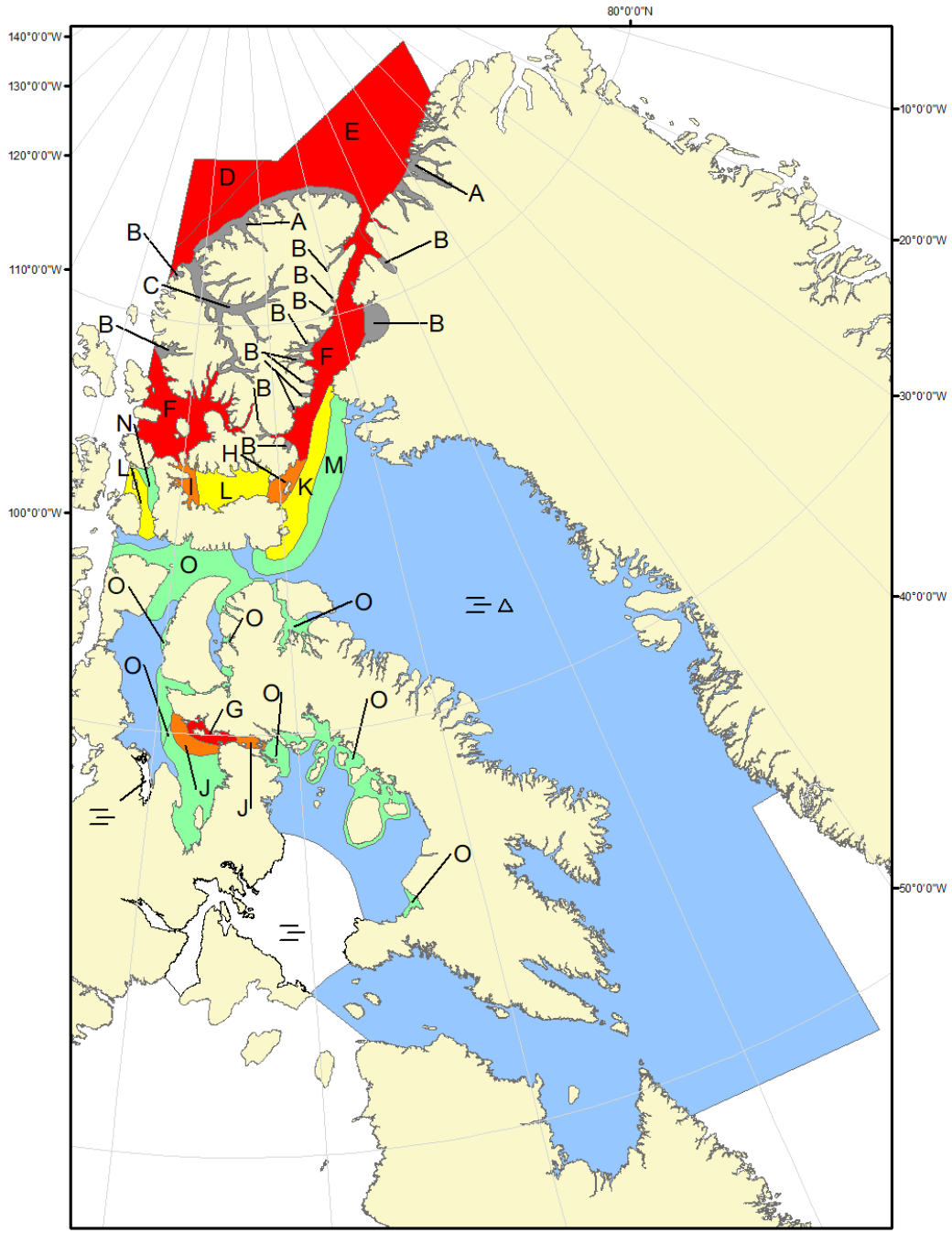
- 4-6 tenths first-year and old ice with areas of 9-9+ tenths new, first-year and old ice mainly in the northern section.

September 19-30

- 7-8 tenths new, grey, first-year and old ice with areas of 9-9+ tenths new, grey, first-year and old ice.

October 1-15

- 7-8 tenths second-year and multi-year ice with grey and grey-white ice between the floes with areas of 9-9+ tenths second-year and multi-year ice with grey and grey-white ice between the floes.



COLOR CODES BASED ON TOTAL CONCENTRATION			
	ICE FREE		4-6 TENTHS
	LESS THEN 1 TENTH		7-8 TENTHS
	1-3 TENTHS		9-10 TENTHS
			FAST ICE (TEN TENTHS)
			ICE SHELF
			UNDEFINED ICE

**North American Ice Service /**  
**Service des glaces de l'Amérique du Nord**  
**ICE FORECAST - 30 DAY**  
**PRÉVISIONS DES GLACES - 30 JOURS**  
**VALID/VALIDE: 15 OCT/OCT 2024**