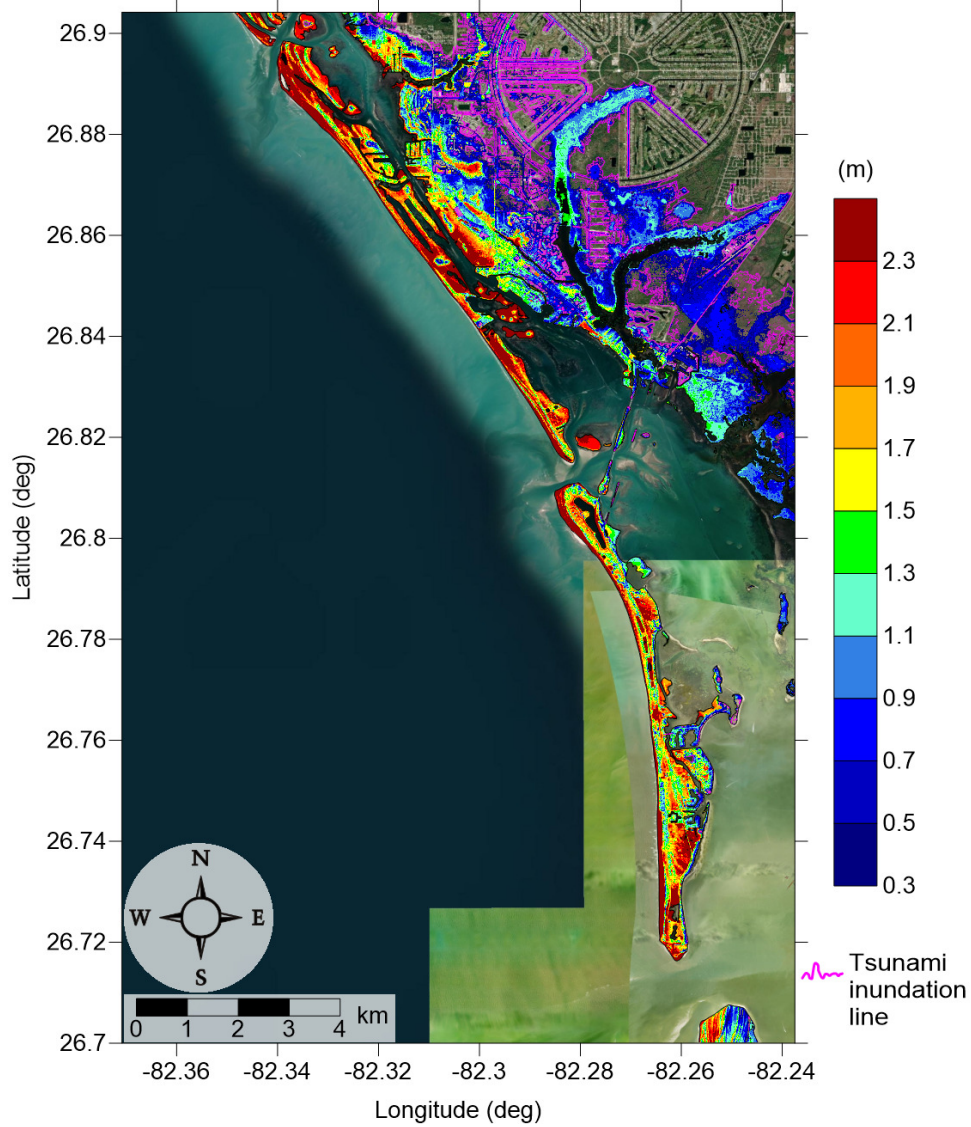


Tsunami Inundation Map Don Pedro Island-Boca Grande



MAXIMUM ESTIMATED TSUNAMI INUNDATION

State of Florida - Don Pedro Island-Boca Grande



Tsunami Sources Modeled for the Don Pedro Island-Boca Grande coastline

LOCAL LANDSLIDE SOURCES GULF OF MEXICO		LOCATION (Deg)
Geological	East Breaks	Long: -95.68 Lat: 27.70
	Mississippi Canyon	Long: -90.00 Lat: 28.60
	West Florida	Long: -84.75 Lat: 25.95
	Yucatan #3	Long: -91.50 Lat: 22.50
	Yucatan #5	Long: -91.50 Lat: 22.50
Probabilistic	PSL-A	Long: -94.30 Lat: 27.98
	PSL-B1	Long: -91.56 Lat: 28.05
	PSL-B2	Long: -91.01 Lat: 26.17
	PSL-C	Long: -87.20 Lat: 28.62

METHOD OF PREPARATION

Tsunami modeling was performed by the Tsunami Research Group at Texas A&M University at Galveston, funded by NOAA. The tsunami modeling process utilized the 3D model TSUNAMI3D (Horrillo et al., 2013) to model landslide-generated tsunamis, coupled with the 2D model NEOWAVE (Yamazaki et al., 2008) which calculates wave propagation and detailed runup for inundation mapping. The tsunami generation phase (TSUNAMI3D) used a 15 arc-second (~450m) resolution grid with bathymetry obtained from the National Oceanic and Atmospheric Administration (NOAA) National Geophysical data Center (NGDC) Coastal Relief Model (CRM) with 3 arc-second (~90m) resolution. The propagation/inundation modeling phase (NEOWAVE) consisted of a series of nested grids from 15 arc-second (~450m) to 1/3 arc-second (~10m) resolution. Bathymetric/topographic data used in the 15 arc-second (~450m) resolution grids were obtained from NOAA NGDC CRM. Near-shore grids with a 3 arc-second (~90m) or higher resolution were obtained from the NOAA NGDC Tsunami Inundation Digital Elevation Models (DEMs) with 1/3 arc-second (~10m) resolution and were adjusted to "Mean High Water" sea level conditions, representing a conservative sea level for the intended use of tsunami modeling and mapping.

Local submarine landslides are considered to be the primary potential source of tsunami generation in the Gulf of Mexico (ten Brink et al., 2009). A suite of nine tsunami source events was used for tsunami modeling, including five identified ancient events (ten Brink et al., 2009 and Chaytor et al., 2016) and four synthetic probabilistic submarine landslides (PSL-A, PSL-B1, PSL-B2, PSL-C) which represent the maximum credible events that could occur in specific regions in the Gulf of Mexico according to the local bathymetry, seafloor slope, and sediment information (Pampell-Manis et al., 2016). The location of these sources is indicated in the adjacent table.

The accuracy of the flow depth and inundation line shown on this map is subject to limitations including accuracy of available bathymetry/topography data, tsunami source information, and the current scientific understanding of tsunami generation and propagation as expressed in the models. This map represents the composite maximum inundation from all nine tsunami sources considered here and does not represent inundation from a single tsunami event.

REFERENCES

Horrillo, J., Wood A., Kim, G.-B, A. Parambath A., 2013. A simplified 3-D Navier-Stokes numerical model for landslide-tsunami: Application to the Gulf of Mexico. *J. Geophys. Res. Oceans*, 118, 6934-6950.

Yamazaki, Y., Kowalik, Z., Cheung, K.F., 2008. Depth-integrated, non-hydrostatic model for wave breaking and run-up. *Int. J. Numer. Meth. Fluids*, 61(5), 473-497.

ten Brink, U., Twichel, D., Lynett, P., Geist, E., Chaytor, J., Lee, H., Buczkowski, B., Flores, C., 2009. Regional Assessment of Tsunami Potential in the Gulf of Mexico. Open-File Report. U.S. Geological Survey.

Chaytor, J.D., Geist, E.L., Paull, C.K., Caress, D.W., Gwiazda, R., Fucugauchi, J.U., Vieyra, M.R., 2016. Source Characterization and Tsunami Modeling of Submarine Landslides Along the Yucatán Shelf/Campeche Escarpment, Southern Gulf of Mexico. *Pure Appl. Geophys.*, 173(12), 4101-4116.

Pampell-Manis, A., Horrillo, J., Shigihara, Y., Parambath, L., 2016. Probabilistic Assessment of Landslide Tsunami Hazard for the Northern Gulf of Mexico. *J. Geophys. Res. Oceans*, 121, 1009-1027.

INTENDED USE

This tsunami inundation map was prepared to assist local emergency management in identifying their tsunami hazard. It is intended for local jurisdictional, coastal evacuation planning uses only. This map is not intended for site-specific or land-use purposes or regulations.

This inundation map has been compiled with the best currently available scientific information. The inundation line represents the maximum considered tsunami runup from a number of maximum credible tsunami sources, thus all of the inundation seen in a particular area will not likely be inundated during a single tsunami event. However, actual conditions during a tsunami may vary, so the accuracy of the inundation shown here cannot be guaranteed. Although an attempt has been made to identify a credible upper bound to inundation at any location along the coastline, it remains possible that actual inundation could be greater in a major tsunami event. This map is intended to portray the worst case scenario and does not provide any further information about the return periods of the events studied here. Interpretation of this tsunami inundation map by qualified individuals is strongly recommended.

MAP BASE

Topographic base map obtained from the ArcGIS World Imagery database, exported with a resolution of approximately 1/3 arc-seconds (~10m). Tsunami inundation line boundaries may reflect updated digital topographic data that can differ significantly from contours shown on the base map.

DISCLAIMER

The National Tsunami Hazard Mitigation Program (NTHMP) and Texas A&M University at Galveston (TAMUG) make no representation or warranties, express or implied, regarding the accuracy of this inundation map nor the data from which the map was derived. Neither the NTHMP nor TAMUG shall be liable under any circumstances for any direct, indirect, special, incidental or consequential damages with respect to any claim by any user or any third party on account of or arising from the use of this map.

