

joVE

Füllen Sie den Objektträger mit  
dem Zango mehrmals mit dem

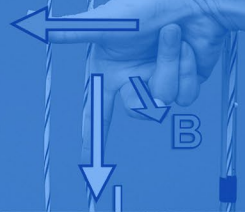
Collect the next fraction,  
and mark it as F1.

extracellular DNA measurement  
is a surrogate marker

die Stiftspitze an einer  
beliebigen Stelle des Sterns

pH 1 3 5 7 9 11

Lorentz Force



# Librarian Guide

The ultimate guide to your JoVE subscription

on an appropriate antibiotic resistance

150°

<b>ACCESSING JoVE .....</b>	<b>3</b>
Setting Up JoVE Access .....	3
Remote Access .....	3
Checking Access.....	3
Tablet and Mobile Use.....	4
JoVE Accounts.....	4
JoVE Account Menu.....	4
Usage Statistics .....	6
<b>SEARCH &amp; DISCOVERY .....</b>	<b>7</b>
Search Queries on www.jove.com .....	7
Scientific Indexes .....	8
Discovery Services .....	8
Link Resolvers .....	8
MARC Records.....	8
ISSN Numbers.....	8
<b>CUSTOMER SUCCESS &amp; RESOURCES .....</b>	<b>9</b>
Customer Success Team .....	9
Resources .....	9
Faculty Training Webinars .....	10
Subscription-supporting Collateral .....	10
Blog .....	10
<b>JoVE FEATURES .....</b>	<b>11</b>
Content integration into your Learning Management Systems (LMS) or Online Platform .....	11
Free syllabus mapping .....	11
Playlists .....	12
JoVE Quizzes .....	13
Favorite Articles.....	13
Share Buttons.....	13
Citations .....	14
<b>TECHNICAL SUPPORT &amp; CONTACT LIST .....</b>	<b>15</b>
Getting Help .....	15

## Setting Up JoVE Access

Once your institution subscribes to JoVE, please contact your Account Manager or [subscriptions@jove.com](mailto:subscriptions@jove.com) with a list of your institution's IP addresses and email domains. Anyone who visits the site using a listed IP or domain will get access automatically.

## Setting Up a Trial

Not a current subscriber, or interested in checking out some new JoVE content? Contact your Account Manager to set up a trial, or simply email [subscriptions@jove.com](mailto:subscriptions@jove.com) and we'll make sure you get connected.

## Remote Access

There are several ways to facilitate remote access to JoVE:

- **Individual JoVE accounts:** Students, staff and faculty can [create an account](#) using their institutional email address to access JoVE videos off-campus.
- **Google Single Sign-on:** If your institution uses Gmail, your users can log in with Google SSO (single sign-on) using their institutional Gmail credentials.
- **Sign-on Using Shibboleth or OpenAthens:** If your institution uses Shibboleth or OpenAthens, your users can log in from [here](#) or follow the prompts from the main [sign-in page](#), using their institutional email and password.
  - Please check the drop-down menu [here](#) to make sure your institution is on the list.
  - If you cannot find your institution on the list, please email your Account Manager or [subscriptions@jove.com](mailto:subscriptions@jove.com) with the Entity ID and the Federation Scope to set it up.
- **Authenticated Remote Access With EZproxy:** Authenticated remote access to JoVE content can be provided by using our [EZProxy stanza](#).
- **Embedding JoVE videos into courses:** JoVE videos can easily be embedded into most learning management systems, either [individually](#) or [in bulk](#). Here are helpful [how-to guides](#) to walk your faculty through video setup in your institution's system.

Any of these options will allow complete access to all content included in the institutional subscription. If you have any issues, please reach out to your Curriculum Specialist or email us at [customersuccess@jove.com](mailto:customersuccess@jove.com).

## Checking Access

Once logged into [www.jove.com](http://www.jove.com), you can check your access by visiting the [access page](#). Alternatively, you can go to 'MY JoVE', located under your name in the top right corner and navigate to 'JoVE ACCESS'. Your subscribed JoVE content is highlighted; what you don't subscribe to is grayed out.

## Tablet and Mobile Use

Our website is responsive and mobile-friendly. Users can go directly to [www.jove.com](http://www.jove.com) with their mobile phones and tablets.

## JoVE Accounts

To access JoVE seamlessly and utilize all the features, please [create an account](#) using your institutional email. There are three types of accounts — Librarian, Author and User accounts. The type of account is automatically assigned, and is based on the user's selection of their role upon registration. They are designed to display useful features relevant to each of the roles.

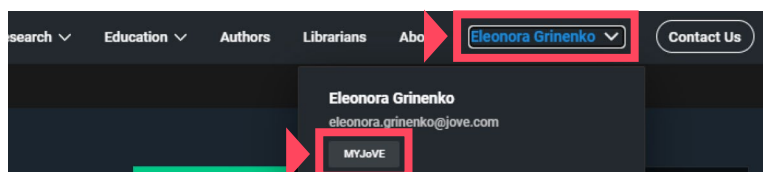
- **Librarian accounts** get assigned only to the primary contacts confirmed by the institution.
- **Author accounts** get assigned to JoVE's published authors, based on the email address they supply in their manuscript.
- **User accounts** get assigned to any other user registered on [www.jove.com](http://www.jove.com).

## JoVE Account Menu

Once logged into [www.jove.com](http://www.jove.com), users will find a quick access menu in the upper right-hand corner linking to common JoVE account features such as:

### MYJoVE

Clicking on this button under the account owner's name and email, users will find access points specific to their user account type, which are:



### Librarian

- Publications at My Institution
- Librarian Resources
- Subscribed Institutions
- Account Info
- JoVE Access
- LTI Admin
- Recommendations
- Upload Logo

### Author

- View Watch History
- Favorite Articles
- Citations Listing
- My Tests
- My Publications
- Account Info
- JoVE Access
- LTI Admin

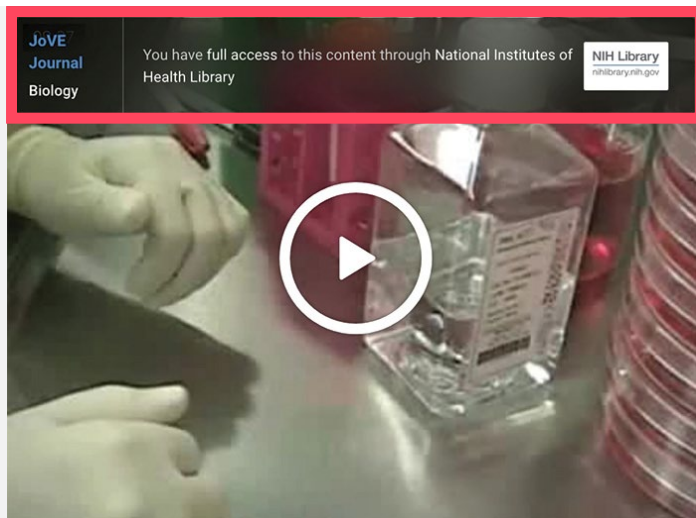
### User

- View Watch History
- Favorite Articles
- Citations Listing
- My Tests
- Account Info
- JoVE Access
- LTI Admin

## Tips for Librarians:

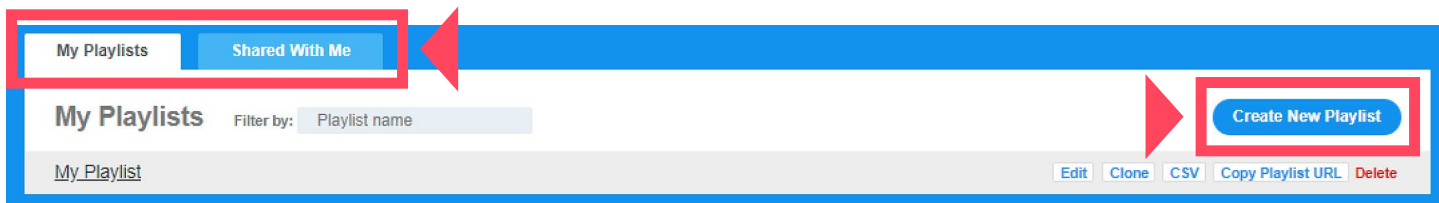
Librarian accounts can only be created by and assigned to people designated as your institution's primary contacts. If you need to update your primary contacts or you're experiencing any difficulties with viewing the Librarian account features, please email your Account Manager or [subscriptions@jove.com](mailto:subscriptions@jove.com).

If you have a Librarian account, **Upload logo** option is available for you. We recommend uploading your logo to let your users see that your institution is granting them access to JoVE. It will appear in the upper right-hand corner of each JoVE video.



Right below the MYJoVE button there are also:

- **Manage Account**  
From here, users can keep their JoVE account information up-to-date, including password.
- **JoVE Quizzes**  
Users can access quizzes they've made or taken from here.
- **Favorite Articles**  
A list of user favorited articles can be found here.
- **My Playlists**  
From here, users can create their own playlists or view playlists that have been shared with them.





## Usage Statistics

Your institution's usage statistics reflect the number of views of all pages across [www.jove.com](http://www.jove.com), including video pages, as well as video view time and further breakdowns of page-level statistics. To obtain your institution's usage statistics, please email your Account Manager or [subscriptions@jove.com](mailto:subscriptions@jove.com).

Additionally, JoVE offers video usage statistics such as views by institution or over a period of time. These statistics are available for all Journal, Encyclopedia of Experiments and Science Education videos. These results can be particularly interesting to publishing institutions and authors. You can find total views since publication and the usage statistics button on the right-hand side, below the video.

The screenshot shows the JoVE website interface. At the top, there is a search bar with 12,858 video articles and navigation links for Faculty Resource Center, COVID-19, Research, Education, Authors, Librarians, About, and a user profile for Julia Smith. A video player is featured with a play button overlay and a 'This content is Open Access.' notification. The video title is 'Characterizing Lewis Pairs Using Titration Coupled with In Situ Infrared Spectroscopy' by Carly S. Hanson and James J. Devery, published on February 20th, 2020. The video is categorized under 'JoVE Journal Chemistry'. A table of contents on the right lists chapters from 0:04 to 6:53. Below the video player, there are buttons for 'ARTICLE', 'EMBED VIDEO', and 'DOI'. A red box highlights the 'USAGE STATISTICS' button. Below this, social media icons for Twitter, Facebook, LinkedIn, and YouTube are shown, along with a star icon and a '2,874 Views' counter, also highlighted with a red box. A 'Related Videos' section at the bottom right features a video titled 'A Strategy for Sensitive, Large Scale Quantitative Metabolomics'.

joVE Search 12,858 video articles... Faculty Resource Center COVID-19 Research Education Authors Librarians About Julia Smith Contact Us

JoVE Journal Chemistry This content is Open Access.

Chapters

- 0:04 Introduction
- 0:48 Open-air Reference Spectrum and Solvent Reference Spectrum
- 2:15 Titration Software Setup and Procedure
- 3:39 IR Spectra Analysis and Component Analysis
- 4:45 Analysis of Consumption of Species
- 5:45 Results: Data Analysis
- 6:53 Conclusion

**Characterizing Lewis Pairs Using Titration Coupled with In Situ Infrared Spectroscopy**

doi: 10.3791/60745

Carly S. Hanson<sup>1</sup>, James J. Devery<sup>1</sup>

<sup>1</sup>Department of Chemistry & Biochemistry, Loyola University Chicago

Summary Automatic Translation February 20th, 2020

ARTICLE EMBED VIDEO DOI

USAGE STATISTICS

2,874 Views

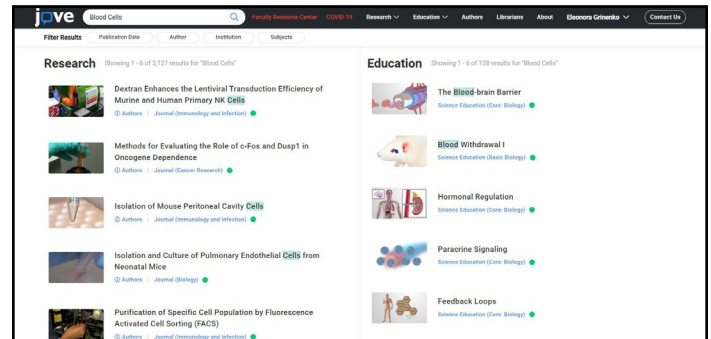
Related Videos

A Strategy for Sensitive, Large Scale Quantitative Metabolomics

## Search Queries on [www.jove.com](http://www.jove.com)

Here are some tips on how JoVE's search function works to help your users optimize their results:

•



## Scientific Indexes

---

JoVE articles are indexed in PubMed/Medline, Web of Science, ChemAbstracts, SciFinder and Scopus, to name a few. Searching for 'JoVE', 'MyJoVE', JoVE [journal], or 'Journal of Visualized Experiments' on any online resource should bring up our content.

PubMed also allows you to:

- Save searches and create search alerts
- Organize materials into collections or a bibliography
- Create custom search filters
- Keep track of recent searches and resource views
- Create and manage an online CV

## Discovery Services

---

A discovery service is an online library searching tool that allows seamless searching across a wide range of content. JoVE partners with the following discovery service vendors by providing metadata updates.

- EBSCO Discovery Service (EDS)
- Ex Libris Alma & Primo
- InfoDesk
- OCLC WMS
- Reprints Desk
- RightFind

If you don't see your discovery service listed, please contact [marcrecords@jove.com](mailto:marcrecords@jove.com) to receive metadata and updates.

## Link Resolvers

---

Link resolvers work with discovery services by providing customized lists with title-level metadata to libraries. They ensure that end-users get the right links to licensed content. JoVE partners with the following link resolvers:

- EBSCO Full Text Finder
- Ex Libris SFX
- OCLC Worldcat
- 360 Link

## MARC Records

---

Increase visibility of your JoVE video collection by loading our MARC records into your catalog. We've enhanced our metadata by adding additional Library of Congress Subject Headings. Please contact [marcrecords@jove.com](mailto:marcrecords@jove.com) if you would like to receive them.

## ISSN Numbers

---

Check the updated list of ISSNs [here](#).



## Customer Success Team

---

**JoVE's Customer Success Team** is committed to providing customers with everything they need to benefit from their JoVE subscription. Here is an outline of who can be helpful in your institution's journey with JoVE:

**Our Library Relations Manager** is your go-to-person for help with optimizing discoverability of JoVE content and any library-related questions. If you need any assistance from our Library Relations Manager, please reach out to Melanie Masserant at [melanie.masserant@jove.com](mailto:melanie.masserant@jove.com).

**Our Curriculum Specialists** are dedicated to training faculty and scientists on how to use JoVE. They provide tools needed to streamline teaching and training, allowing your users to focus more on higher-impact activities.

**Your dedicated Curriculum Specialist** is assigned to your institution specifically. If you don't know who that is, you can always reach out to [customersuccess@jove.com](mailto:customersuccess@jove.com) and your designated Curriculum Specialist will get back to you as soon as possible.

**Our Subject Matter Experts** are Ph.D.'s who specialize in creating playlists mapped to JoVE content and tailored to any syllabus or lab training program. They work closely with Curriculum Specialists to meet faculty and scientist needs.

## Resources

---

### Librarian Resources Center

Visit the Librarian Resources Center to find helpful tools for maintaining your subscription and supporting your users. There you will find:

- **JoVE Starter Kit:** Everything you need to help you get started with JoVE and support your institution's subscription.
- **User Outreach Materials:** Promotional materials designed to be shared with your users across your institution, raise awareness of new content and services, and help your faculty and researchers get the most out of your JoVE subscription.
- **JoVE Value for Research and Education:** Materials focused on the value of JoVE for your institution and new ways to help your users address their science instruction and research challenges.

### Faculty Resource Center

This one-stop-shop for your faculty provides them with:

- **Pre-made JoVE playlists** with videos mapped to syllabi for commonly taught courses and lab training programs
- **JoVE content integration instructions** for your LMS and online courses
- **Guides for teaching remotely** with JoVE videos
- **Weekly faculty training webinars**

## Faculty Training Webinars

A faculty training webinar is an effective way to help your users get started with JoVE and incorporate videos into any syllabus or lab training program. There are three types of JoVE webinars:

- [Weekly JoVE training webinars](#) for different time zones.
- Webinars specifically organized for your institution and delivered by your dedicated Curriculum Specialist. Please contact your Account Manager or [customersuccess@jove.com](mailto:customersuccess@jove.com) to set one up.
- One-on-one demonstrations for your faculty, hosted by your JoVE Curriculum Specialist. To request a one-on-one session, please contact us at [customersuccess@jove.com](mailto:customersuccess@jove.com).

## Subscription-supporting Collateral

JoVE can provide you with subscription-supporting collateral at no cost. This includes pre-made and customized digital posters, banners, newsletter PDFs, information sheets, videos, email text, etc. To request collateral, please contact your Account Manager or [subscriptions@jove.com](mailto:subscriptions@jove.com).

## Blog

If you are looking for more information on how educators use JoVE, check out our [blog](#), which features JoVE in Action, a series of blog posts highlighting how science educators worldwide have used JoVE to support their remote teaching efforts. We hope these stories will be useful for anyone looking for effective ways to deliver science and lab courses online or in hybrid formats.

The collage consists of six promotional posters for JoVE content:

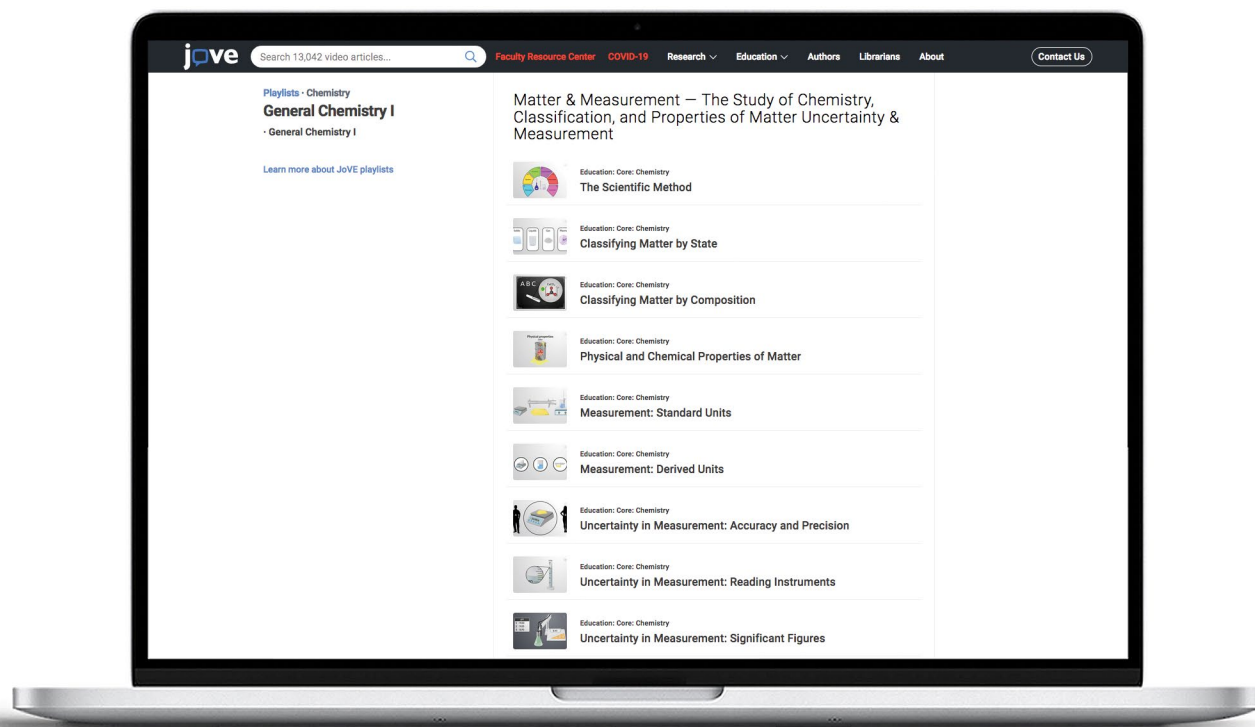
- Studying Medicine?**: Promotes JoVE's video protocols for accelerating research and learning. Topics include Medicine, Biochemistry, Biology, Cancer Research, Genetics, Immunology and Infection, and Advanced Biology Science Education.
- ADVANCED BIOLOGY SERIES**: Features a brain sculpture and lists series topics: Cell Biology | Developmental Biology | Genetics | Immunology | Microbiology | Neuroscience.
- Doing Research? Teaching Science Classes?**: Promotes the peer-reviewed video methods journal, covering Biology, Bioengineering, Chemistry, Biochemistry, and more.
- Now available through IU eTexts**: Announces that JoVE's education content is now available through IU eTexts, listing ISBN: JOVESCIECED and highlighting benefits like customizable content and video reinforcement.
- BIOENGINEERING IS NOW AVAILABLE THROUGH UCRIVERSIDE**: Promotes a collection of more than 800 experiment videos in bioengineering from universities worldwide.
- Accelerating Scientific Research**: Promotes the full JoVE series, highlighting over 10,000 video articles in life and biomedical sciences.

## Content integration into your Learning Management Systems (LMS) or Online Platform

JoVE enables faculty to easily integrate content into any learning management system, such as Moodle, Canvas, Blackboard etc., as well as online platforms such as Zoom or Microsoft Teams. Faculty can integrate a single video or videos in bulk. More details can be found [here](#), in the [Faculty Resource Center](#), or within these [User Outreach Materials](#).

## Free syllabus mapping

Our Customer Success team, which consists of subject matter experts with advanced degrees in different science disciplines, can map JoVE content to any syllabus or lab training program and create shareable playlists.



“I have made extensive use of the General Chemistry playlist that provides an extensive range of short videos that covers the entire content of the general chemistry course.

So JoVE can meet needs in both the lecture and virtual (or face-to-face) lab environments.”

—Richard Jarman,  
Professor of Chemistry, College of DuPage, USA

## Benefits of mapping JoVE content to a...

### Syllabus

- **Streamlined lesson planning:** Faculty do not have to spend time on finding relevant content; JoVE provides ready-to-use playlists customized to their syllabus
- Syllabus-related **videos brought together in one list** makes it easy to quickly locate the videos whenever required
- JoVE videos can be used in **any learning environment**; once created, they can also be reused
- JoVE-created playlists can be **modified, updated and repurposed** by faculty

### Lab training program

- **Streamlined training:** Our Customer Success Team can map JoVE content to any training program, allowing lab managers to save time for higher-impact tasks
- **Standardized training:** Videos brought together in one list can be used as a single, consistent reference point in the lab, allowing all lab members to receive the same training.
- Labels within the playlist can be used to include written instructions for lab members, enabling the creation of a training program that **requires less supervision**

Pre-made syllabus maps for commonly-taught courses, covering a variety of subjects, can be found [here](#). Your users can request a syllabus or training program map by contacting our Customer Success Team at [customersuccess@jove.com](mailto:customersuccess@jove.com).

## Playlists

A playlist is a set of videos that are selected for a certain purpose and neatly organized in one place. They are a convenient and user-friendly way to streamline teaching, training and research with JoVE.

The most popular type of playlist is a syllabus map — a list of JoVE videos mapped to a specific course syllabus or training program by our Customer Success team. However, playlists have broader functionality. The option to add labels, which can be used to add short or long text descriptions, enables users to create highly engaging class assignments or training programs.

For example, when creating a playlist for onboarding purposes, lab managers can combine JoVE videos with text instructions, memos and links to external resources; streamlining the onboarding process and reducing the amount of supervision required.

### Here is what you can do with playlists:

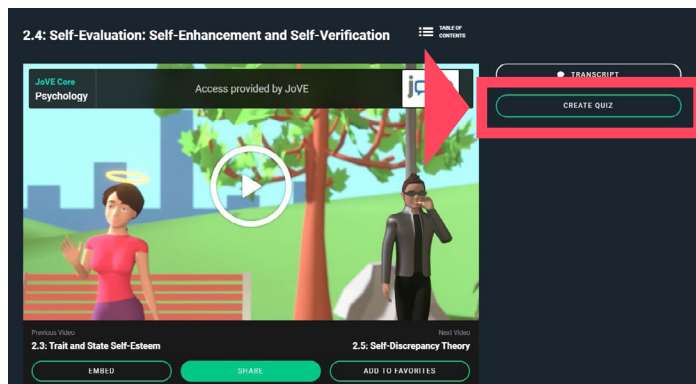
- Clone and customize existing playlists
- Share them with others
- Locate the videos saved in a playlist whenever needed
- Use labels to create engaging playlists

More information and instructions on how to create and share playlists can be found [here](#).

Check out our new Featured Playlists, monthly playlists focused on specific themes. During the month of their release, featured playlists can be viewed with or without a JoVE subscription.

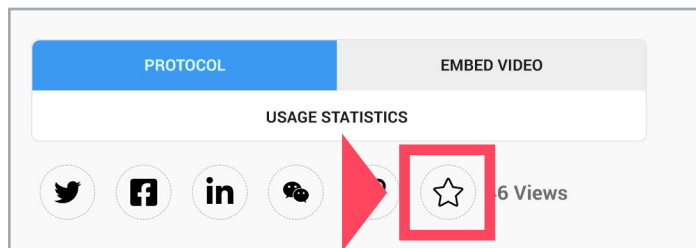
## JoVE Quizzes

Quizzes are one of the assessment tools that JoVE offers for education content. Instructors can access the 'JoVE Quizzes' feature via their JoVE account, and can either create new questions or use pre-made questions. JoVE-generated questions can be found on all education video pages on the right hand side. Instructors can deselect any questions they prefer not to use and add their own. If you need any assistance with quizzes, please contact your Curriculum Specialist or [customersuccess@jove.com](mailto:customersuccess@jove.com).



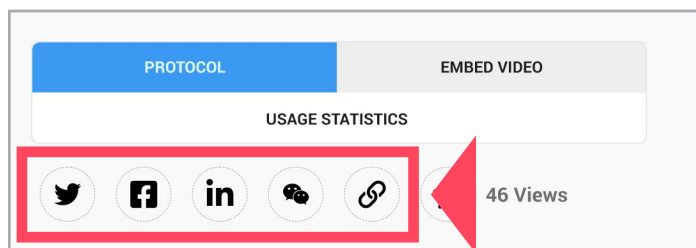
## Favorite Articles

Users can add any articles they would like to their [favorite articles](#) list by clicking on the star icon on any video page.



## Share Buttons

Each video article contains options for sharing the page. Users can share it directly on Twitter, Facebook, LinkedIn, or WeChat, or copy the link.





## Citations

The automatic citation option is available for JoVE Journal, JoVE Encyclopedia of Experiments and JoVE Science Education. It is located on the article or protocol page, which can be found on the right side of the page.

JoVE Journal Chemistry

You have full access to this content through JoVE

Chapters

- 0:04 Introduction
- 0:39 Controlled Odor Mimic Permeation System (COMPs)
- 1:07 Gravimetric COMPs Permeation Analysis
- 1:38 Headspace Analysis
- 2:21 COMPS Storage
- 3:03 Field Olfactory Testing
- 3:52 Results: Representative Permeation Rate Measurement and Modification
- 5:29 Conclusion

**Controlled Odor Mimic Permeation Systems for Olfactory Training and Field Testing**

doi: 10.3791/60846

Lauryn E. DeGreeff<sup>1,2</sup>, Alison G. Simon<sup>3,4</sup>, Michael S. Macias<sup>3</sup>, Howard K. Holness<sup>3</sup>, Kenneth G. Furton<sup>2</sup>

ARTICLE EMBED VIDEO DOI MESSAGE STATISTICS

809 Views

JoVE Journal > Chemistry

Abstract Introduction Protocol Results Discussion Materials References

Chemistry

**Controlled Odor Mimic Permeation Systems for Olfactory Training and Field Testing**

doi: 10.3791/60846 Published: January 28, 2021

Lauryn E. DeGreeff<sup>1,2</sup>, Alison G. Simon<sup>3,4</sup>, Michael S. Macias<sup>3</sup>, Howard K. Holness<sup>3</sup>, Kenneth G. Furton<sup>2</sup>

<sup>1</sup>Chemistry Division, **US Naval Research Laboratory**, <sup>2</sup>International Forensic Research Institute, **Florida International University**, <sup>3</sup>Formerly of International Forensic Research Institute, **Florida International University**, <sup>4</sup>Formerly of National Research Council Post-Doctoral Fellowship Program, **US Naval Research Laboratory**

Summary

The Controlled Odor Mimic Permeation System is a simple, field-portable, low-cost method of odor delivery for olfactory testing and training. It is constructed of an odorant retained on an adsorbent material and contained inside of a permeable polymer bag allowing controlled release of the odorant vapor over time.

Abstract

The Controlled Odor Mimic Permeation System (COMPS) was developed to provide a convenient field testing method of odor delivery at

Play Video

PDF DOI

DOWNLOAD MATERIALS LIST

**Cite this Article**

DeGreeff, L. E., Simon, A. G., ... More

Copy Citation

Download Citation

Reprints and Permissions

## Getting Help

---

If your institution is having any JoVE access or user related issues, reach out to your Account Manager or [Contact Us](#). For additional support, reach out to one of the departments listed below.



### Access and subscription-related support

#### Sales Department

[subscriptions@jove.com](mailto:subscriptions@jove.com)



### User support

#### Customer Success Department

[customersuccess@jove.com](mailto:customersuccess@jove.com)



### Technical support

#### Operations Department

[support@jove.com](mailto:support@jove.com)



### Ideas and suggestions

#### Marketing Department

[marketing@jove.com](mailto:marketing@jove.com)