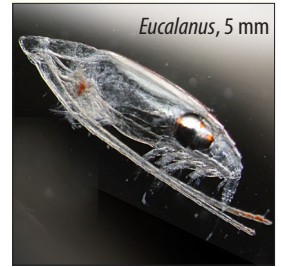
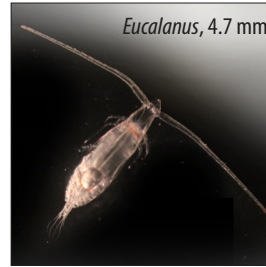
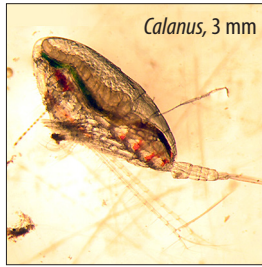
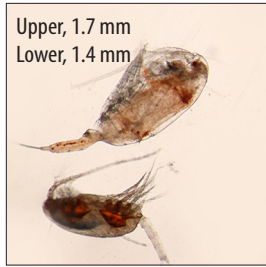


# Marine Zooplankton of Puget Sound

This identification card includes most groups of marine zooplankton found in Puget Sound. Size ranges provided are approximate - some specimens may be outside of the stated ranges. Exact measurements for specimens in photos are provided where available.



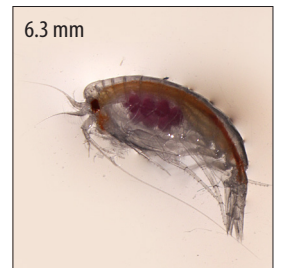
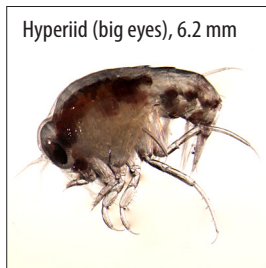
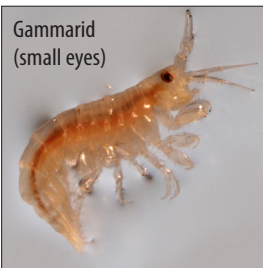
## Copepods 0.5-5 mm



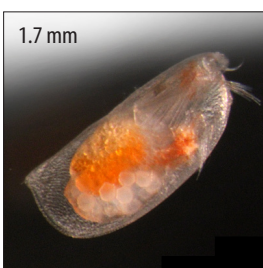
## Cladocerans (water fleas) ~1 mm



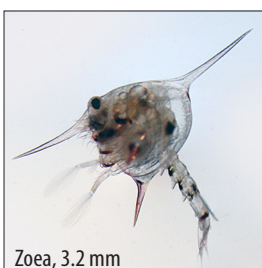
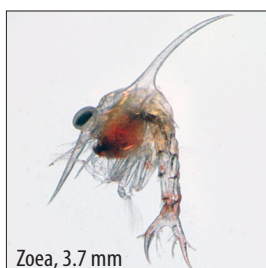
## Amphipods 0.5-2 mm



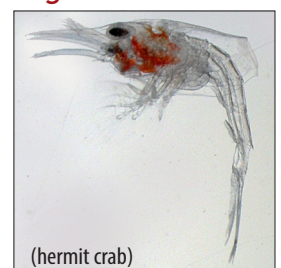
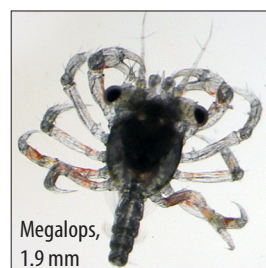
## Ostracods 0.5-2 mm



## Crab larvae 2-5 mm

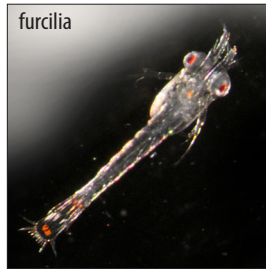
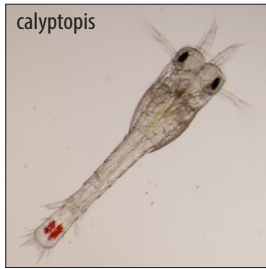
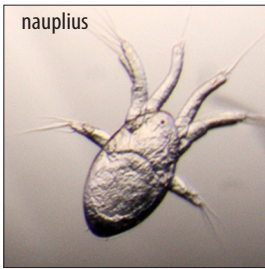


## Pagurus larvae 1-4 mm



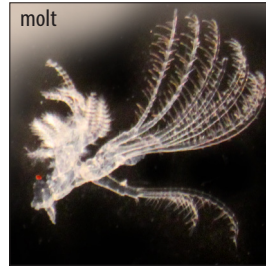
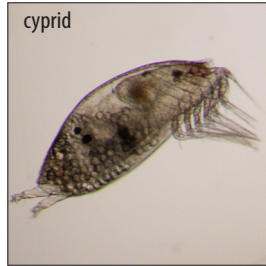
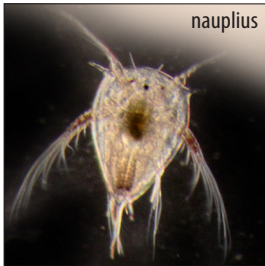


**Euphausiids (krill)** nauplius ~ 0.5 mm; calyptopis 0.5 mm-1.5 mm; furcilia 2-5 mm; adults 8-15 mm



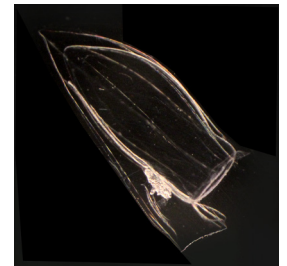
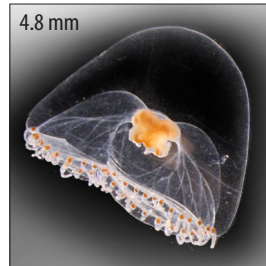
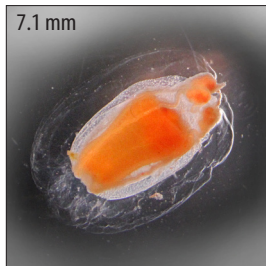
All photos by Audrey Djunaedi, except *Calanus* provided by Julie Keister; larvacean provided by NOAA Photo Library; fish larva provided by Sarah Norberg, NWFSC, NOAA. Special thanks to Julie Keister and Audrey Djunaedi for advising on content and providing size information.

**Barnacles** (larvae and adult molt) larvae 0.5-1 mm; molt size varies



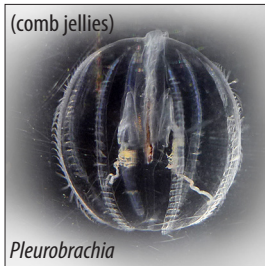
Washington Sea Grant  
University of Washington  
3716 Brooklyn Avenue NE  
Seattle, WA 98105-6716  
206.543.6600  
WSG-AS 13-07  
[www.wsg.washington.edu](http://www.wsg.washington.edu)

**Jellies**

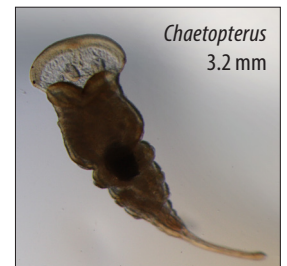
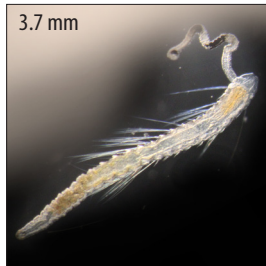
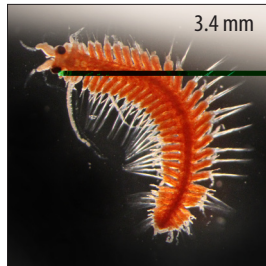


**Siphonophores** 4-8+ mm

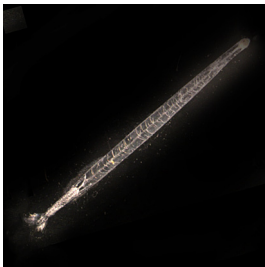
**Ctenophores**



**Polychaete worms** 1 mm-50 cm



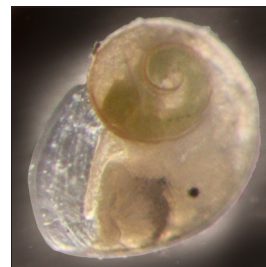
**Chaetognaths (arrow worms)** 3-40 mm



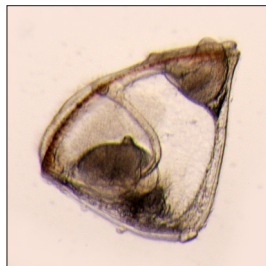
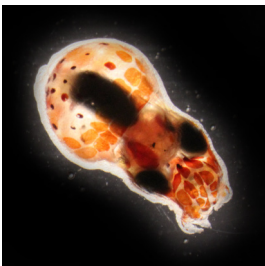
**Pteropods** 0.1-3 mm



**Gastropod larvae** 0.1-0.8 mm



**Octopus larvae** 3-10 mm **Cyphonautes** height ~0.6 mm



**Larvaceans** 2-4 mm



**Fish larvae**

