



Medical gallery of Blausen Medical 2014

Correspondence: info@blausen.com

Abstract

This is a gallery of images contributed to Wikimedia projects by [Blausen Medical](#) by 2014.

Contents

Abstract.....	1
Cardiology	2
Cardiac anatomy	2
Cardiac diseases.....	5
Cardiac interventions	8
Other circulatory.....	13
Gastrointestinal	22
Neurology.....	28
Vertebral.....	38
Obstetrics and gynecology.....	42
Dermatology.....	47
Endocrine	52
Respiratory	55
Diseases.....	58
Other anatomy	61
Cell biology	70
Biochemistry.....	75
Interventions	78

Staff of Blausen Medical

*Author correspondence: info@blausen.com

Licensed under: [CC-BY-SA](#)

Received 05-08-2014; accepted 29-08-2014

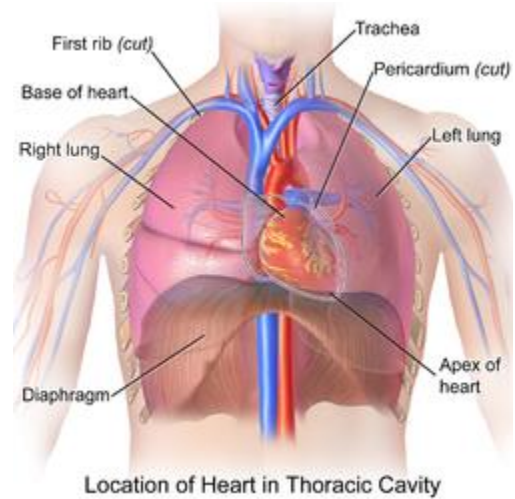


Cardiology

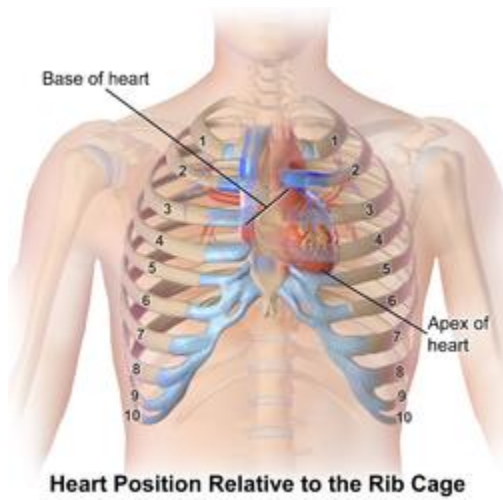
Cardiac anatomy



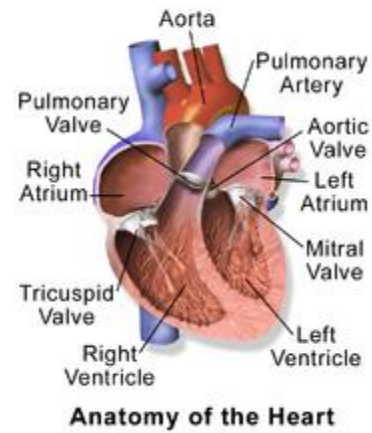
Heart valves.



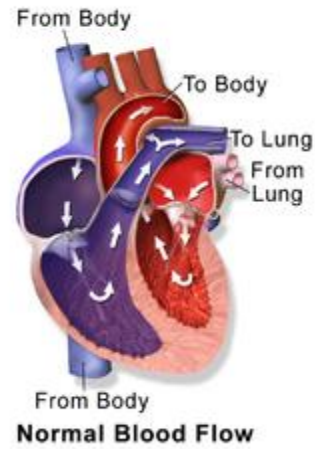
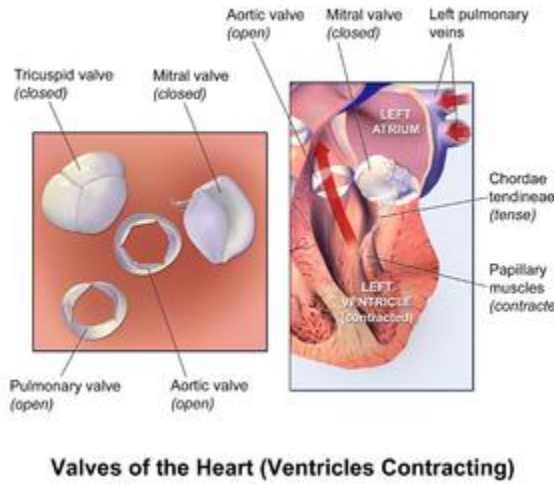
Thoracic cavity.



Heart location

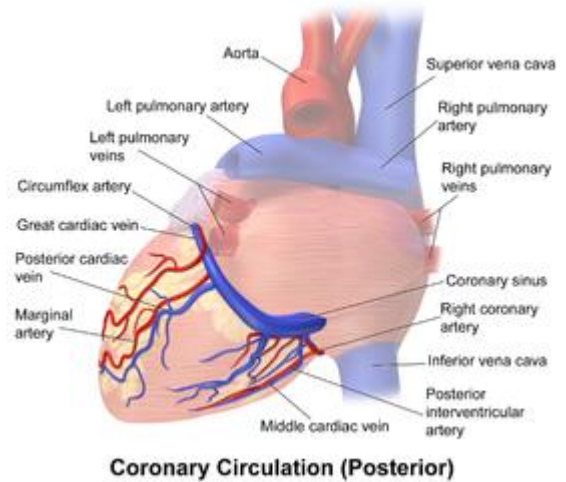
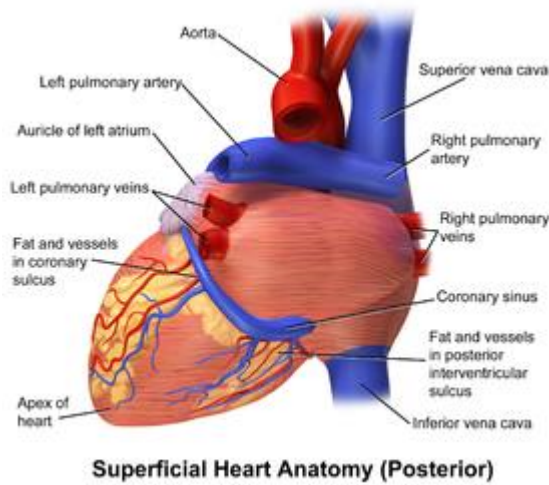


Heart anatomy



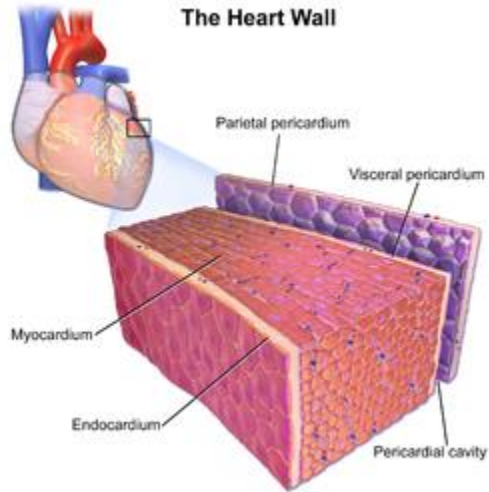
Heart valves during contraction of the ventricles.

Circulatory system through the heart.



Posterior view of the heart

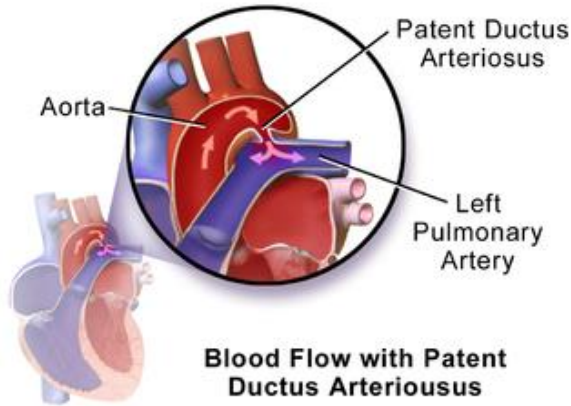
Posterior view of coronary circulation.



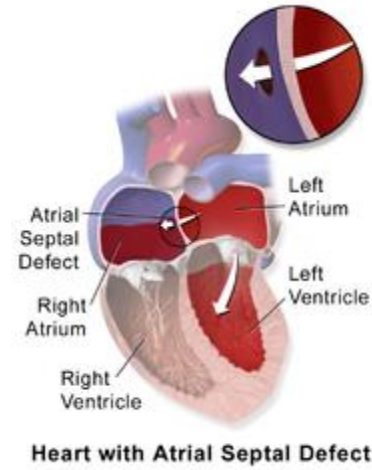
Layers of the walls of the heart.



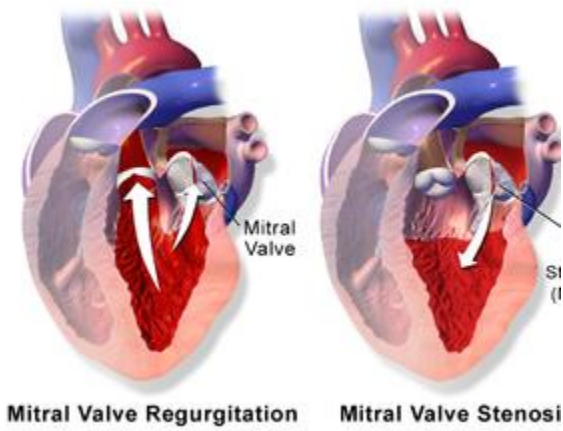
Cardiac diseases



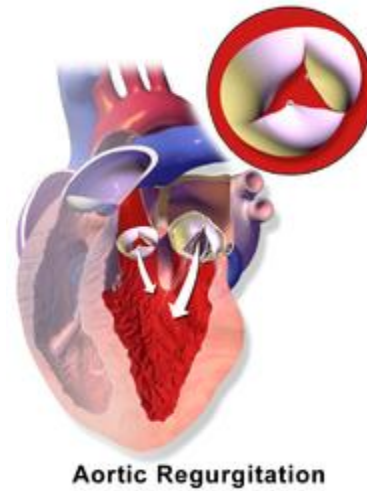
Patent ductus arteriosus.



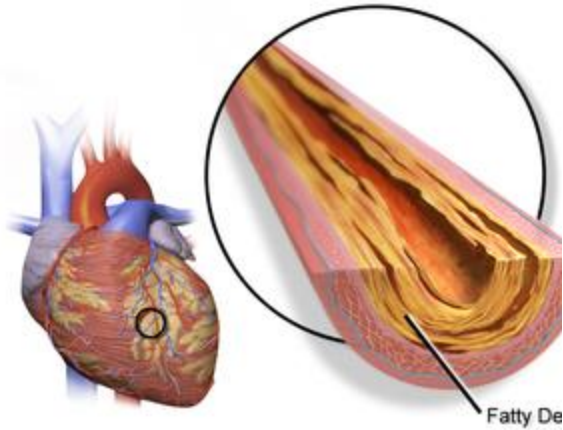
Atrial septal defect.



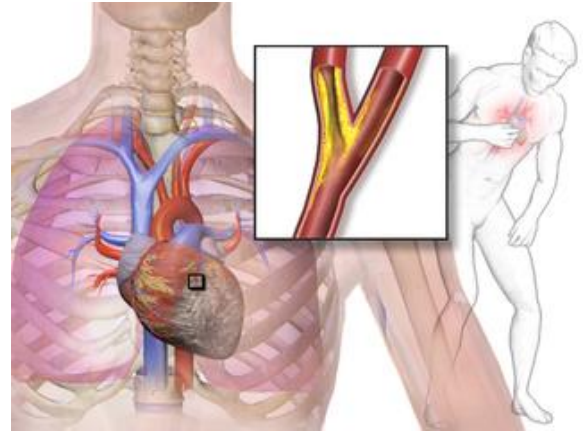
Mitral valve regurgitation and stenosis.



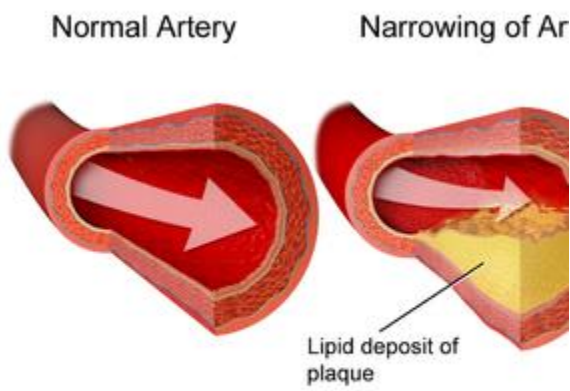
Aortic valve regurgitation



Atherosclerotic plaque of a coronary artery.

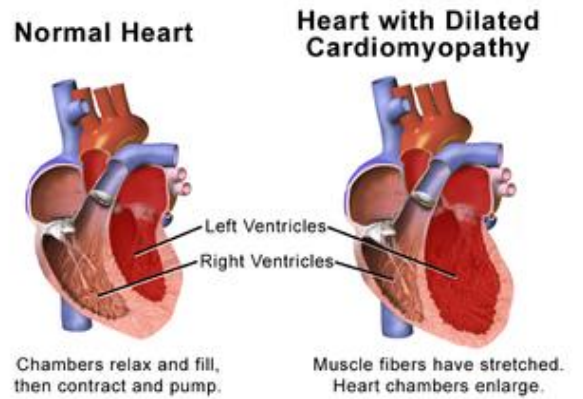


Angina pectoris.

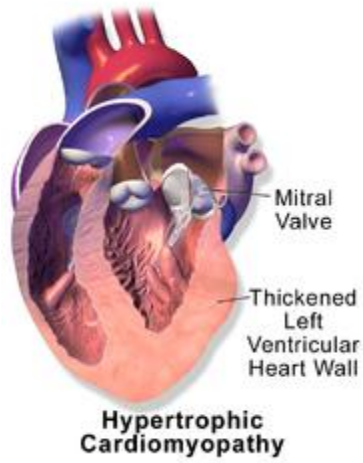


Coronary Artery Disease

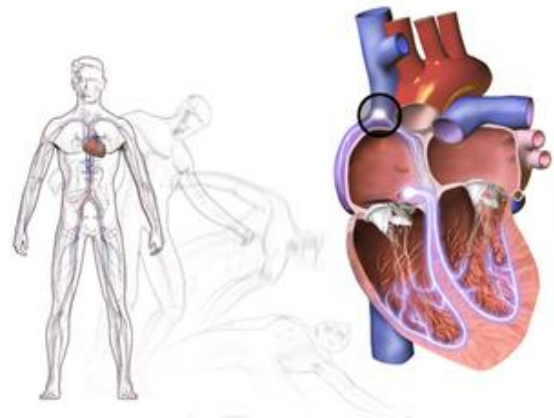
Coronary artery disease.



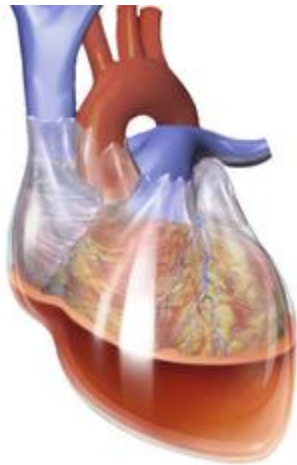
Normal heart versus one with dilated cardiomyopathy



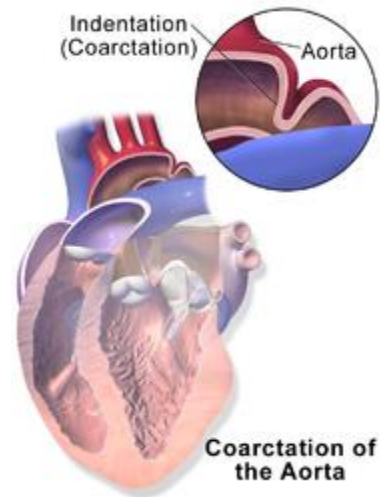
Hypertrophic cardiomyopathy.



Fainting from bradycardia.

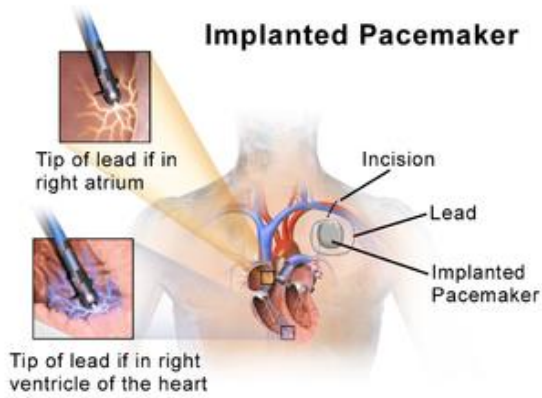


Hemopericardium

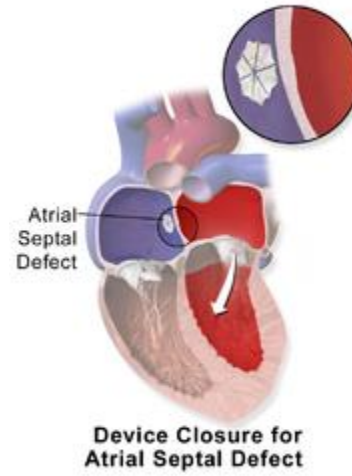


Coarctation of the aorta.

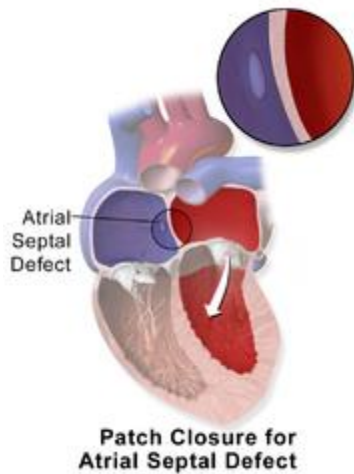
Cardiac interventions



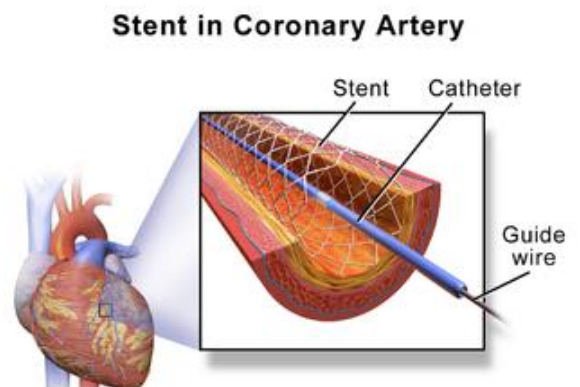
Placement of a pacemaker.



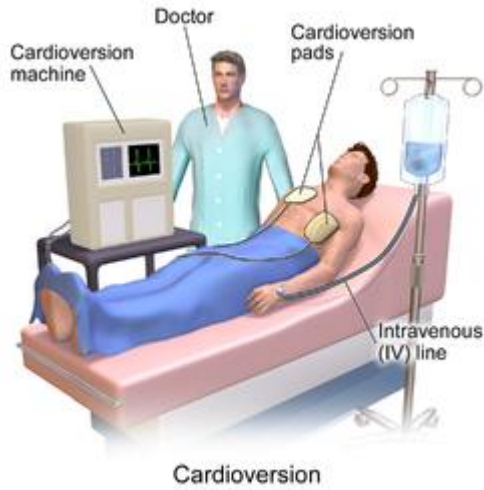
Correction of an atrial septal defect using a percutaneous device.



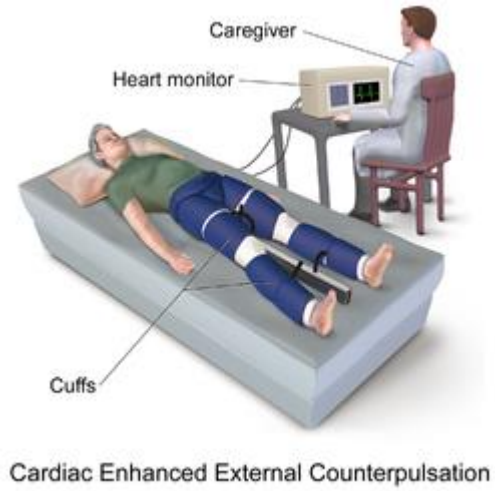
Correction of an atrial septal defect using a patch.



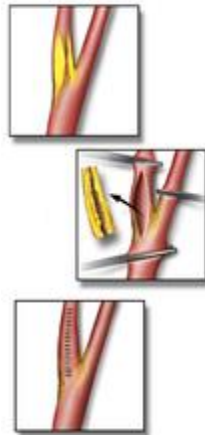
A coronary stent placed by percutaneous coronary intervention.



The setting of cardioversion



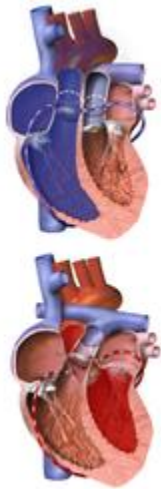
Enhanced external counterpulsation.



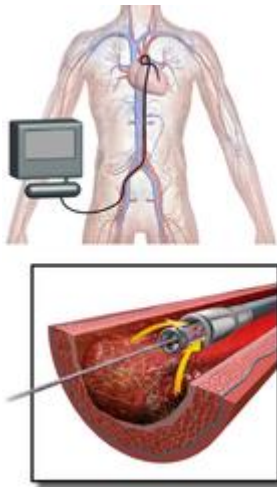
Endarterectomy.



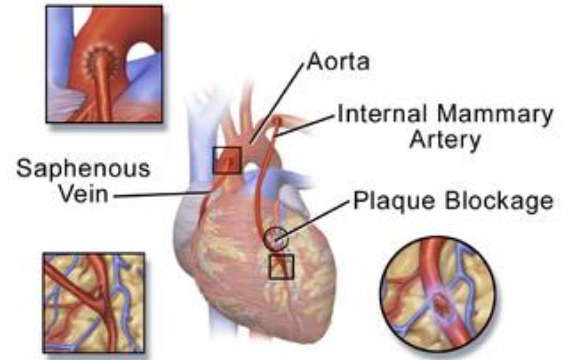
Artificial heart valve of St. Francis model



Arterial switch procedure to correct dextro-Transposition of the great arteries.

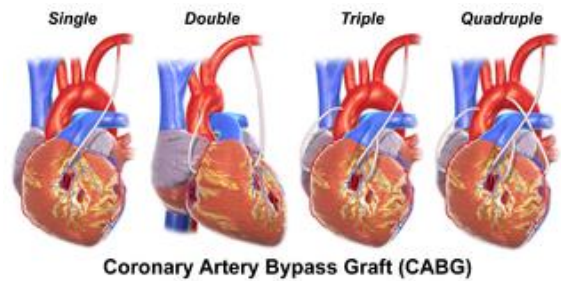


Coronary thrombectomy by AngioJet technique.



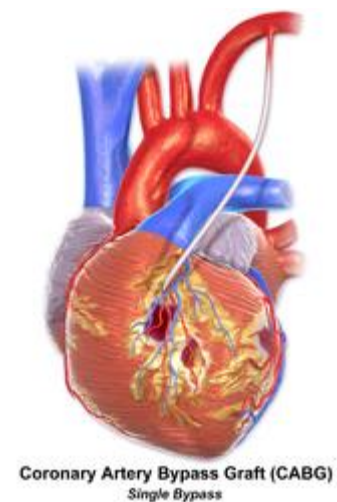
Coronary Artery Bypass Surgery

Coronary artery bypass surgery.



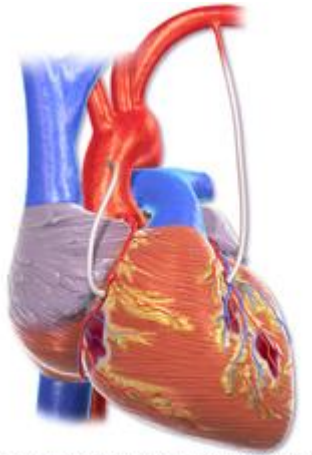
Coronary Artery Bypass Graft (CABG)

Coronary artery bypass surgery types.



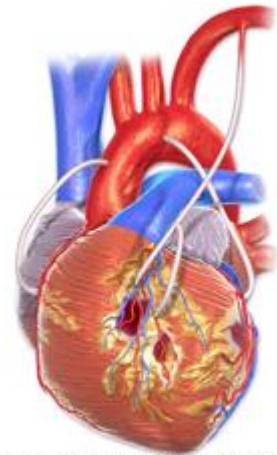
Coronary Artery Bypass Graft (CABG)
Single Bypass

Single coronary artery bypass.



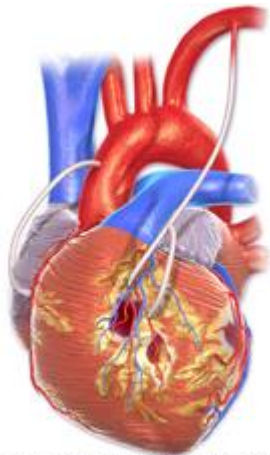
Coronary Artery Bypass Graft (CABG)
Double Bypass

Double coronary artery bypass.



Coronary Artery Bypass Graft (CABG)
Quadruple Bypass

Quadruple coronary artery bypass.



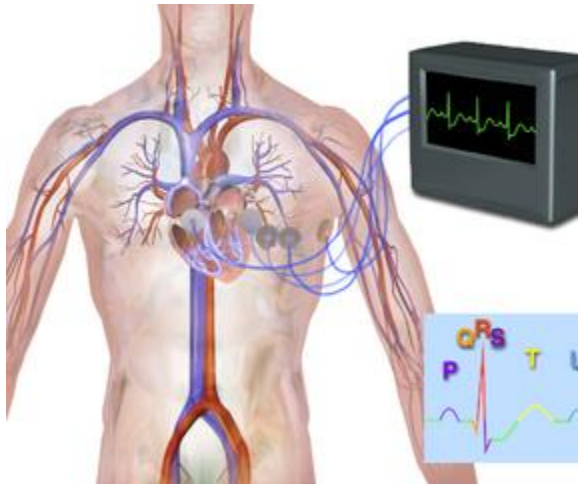
Coronary Artery Bypass Graft (CABG)
Triple Bypass

Triple coronary artery bypass.

Implantable Cardioverter Defibrillator



Implantable cardioverter-defibrillator.



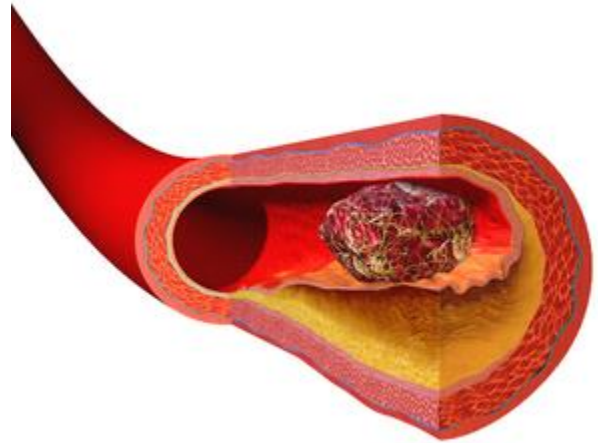
Electrocardiography.



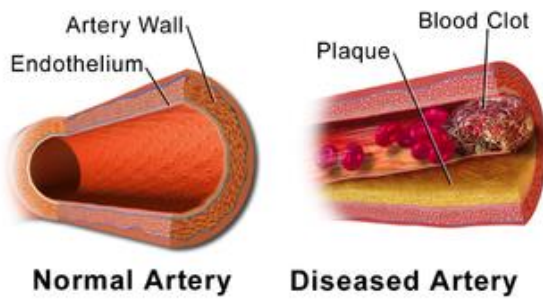
Other circulatory



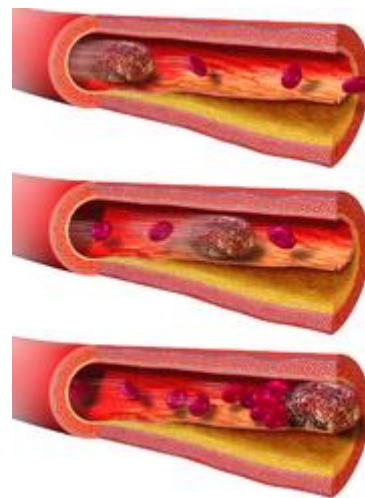
Peripheral artery disease.



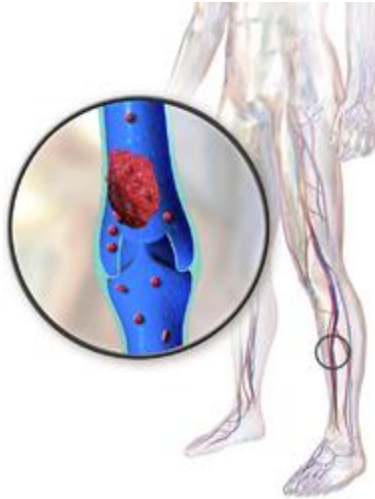
Blood clot.



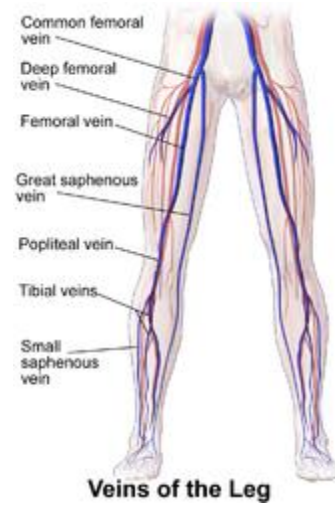
Normal artery vs. one with atherosclerotic plaque and blood clot.



Blood clot motion.



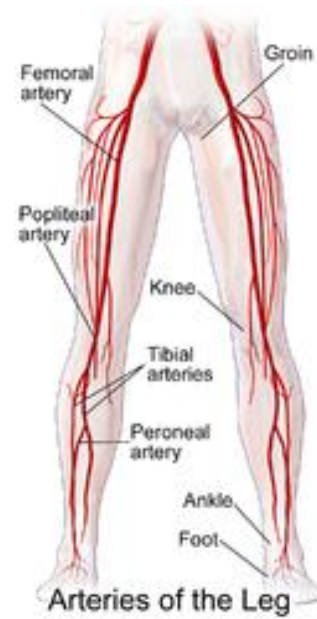
Deep vein thrombosis.



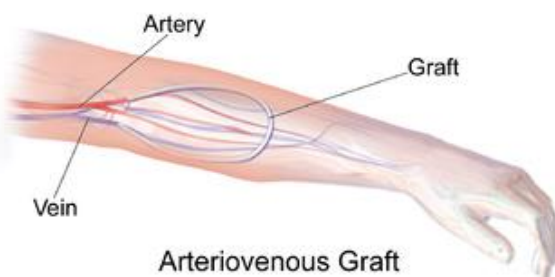
Veins of the leg.



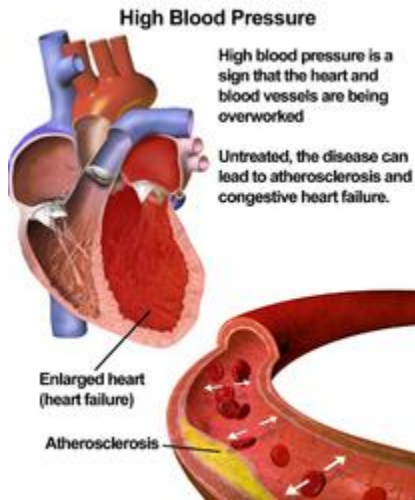
Arteriovenous fistula.



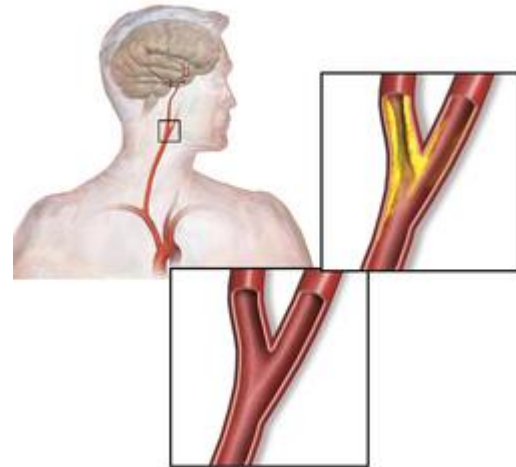
Arteries of the leg.



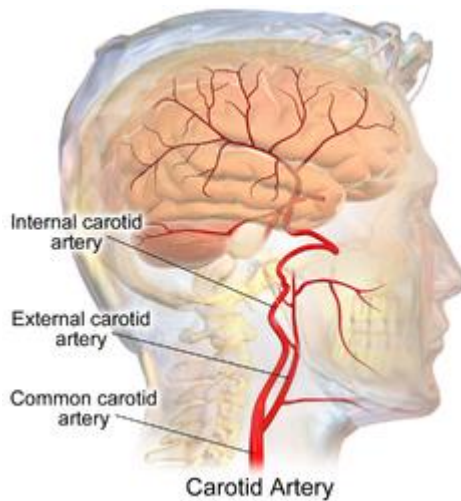
Arteriovenous graft for hemodialysis.



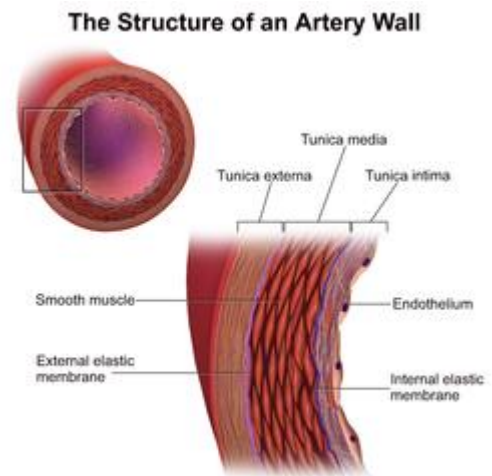
Hypertension.



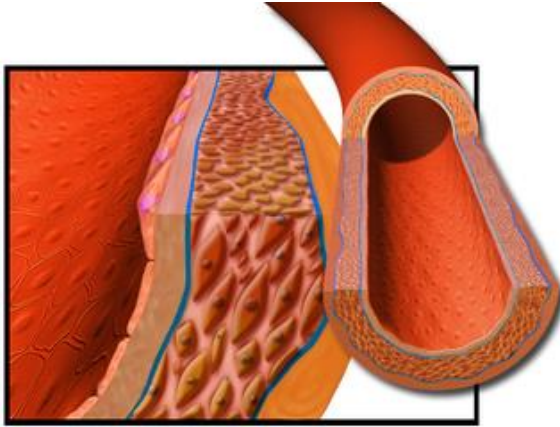
Carotid artery stenosis.



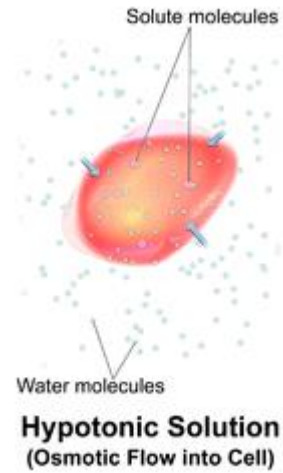
Carotid arteries.



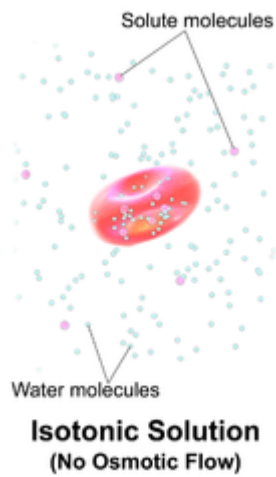
Arterial wall.



Artery.



A red blood cell in a hypotonic solution.



A red blood cell in an isotonic solution.

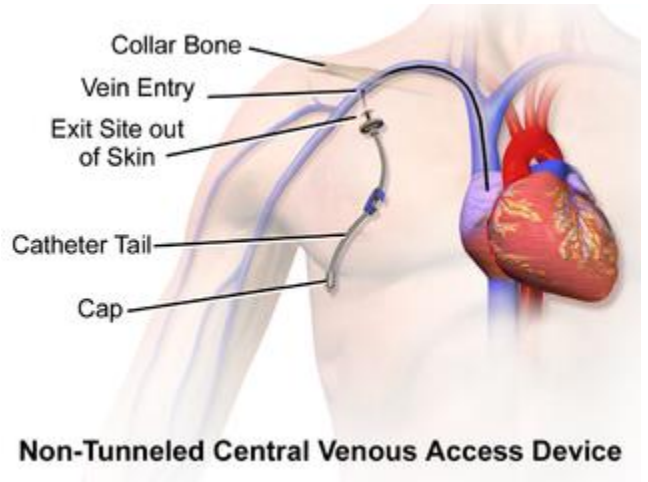


A red blood cell in a hypertonic solution.



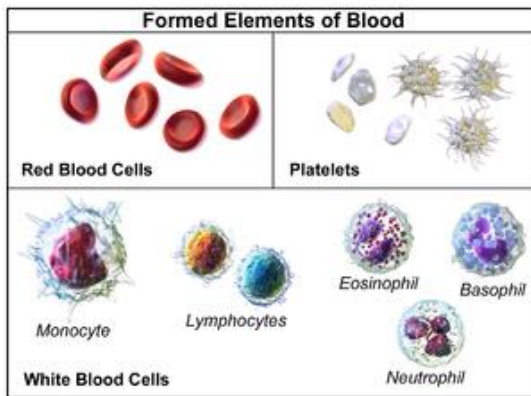
Labeled Blood Bag

Bag of packed red blood cells.

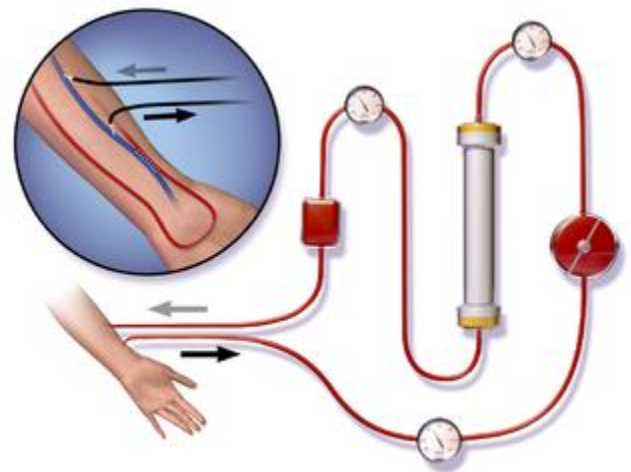


Non-Tunneled Central Venous Access Device

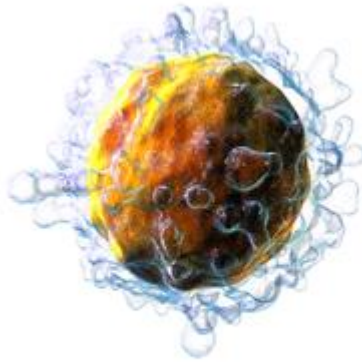
Non-tunneled central venous catheter.



Cell types of blood.

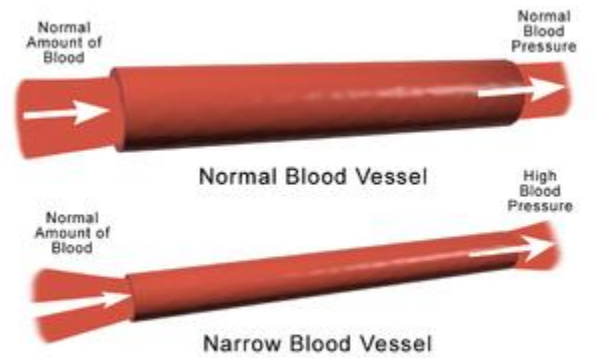


Hemodialysis.



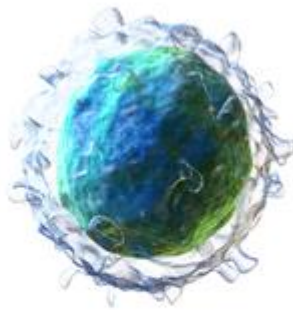
Lymphocyte
T cell

T cell.



Blood Pressure Blood Flow

Blood pressure flow.



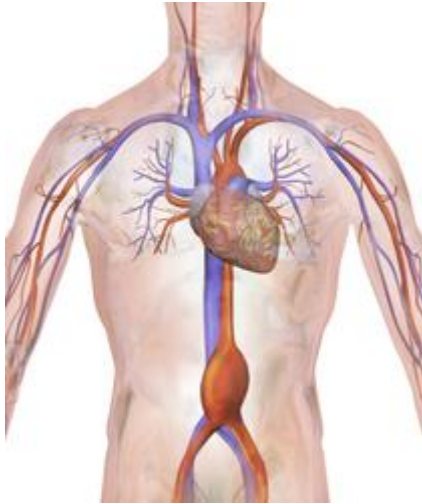
Lymphocyte
B cell

B cell.



Blood Transfusion

Blood transfusion

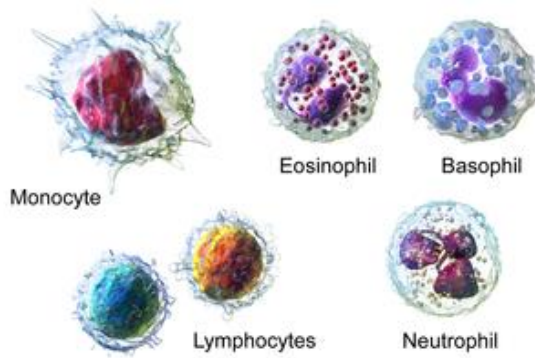


Abdominal aortic aneurysm.



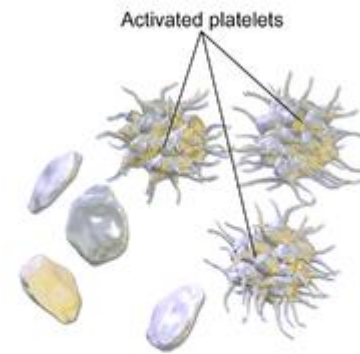
Red Blood Cells

Red blood cells.



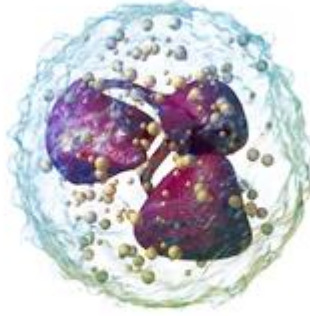
White Blood Cells

White blood cells.



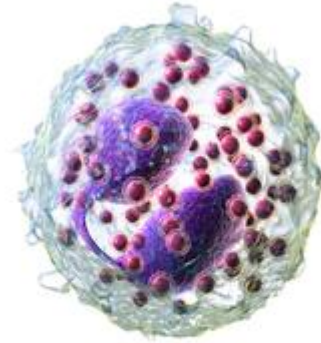
Platelets

Platelets.



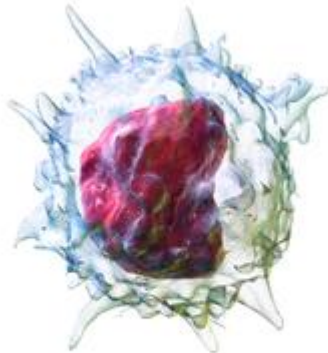
Neutrophil

Neutrophil granulocyte.



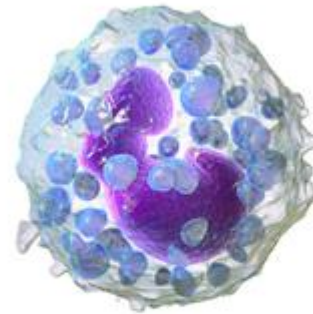
Eosinophil

Eosinophil granulocyte.



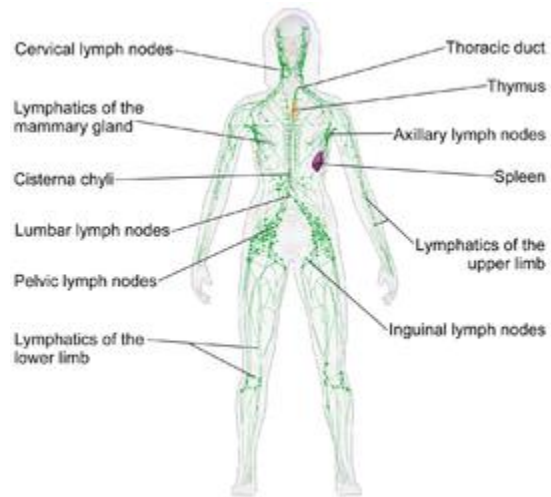
Monocyte

Monocyte.



Basophil

Basophil granulocyte.



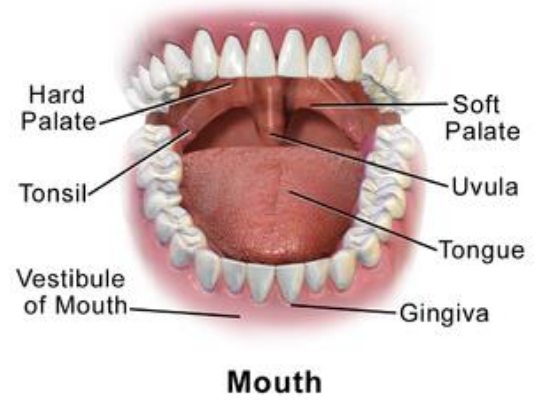
Lymphatic system.

Gastrointestinal

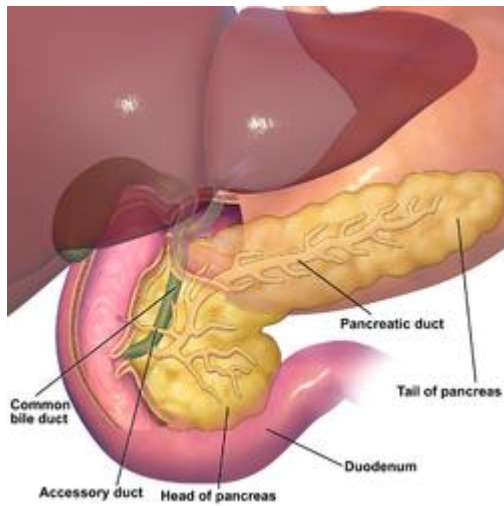


The Components of the Digestive System

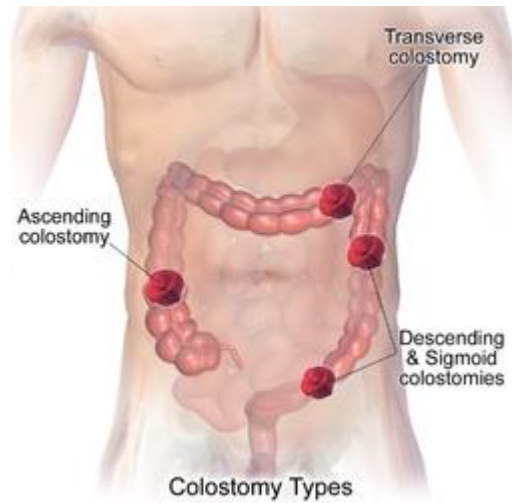
Digestive system.



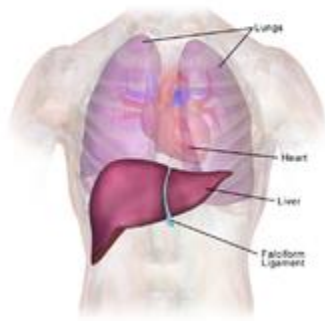
Mouth
Anatomy of the mouth.



Anatomy of the pancreas.

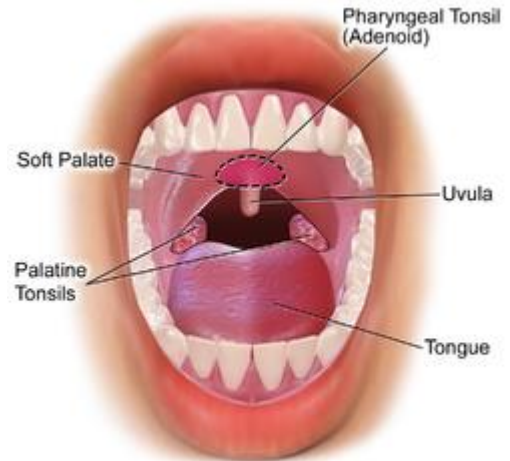


Colostomy Types
Types of colostomy.



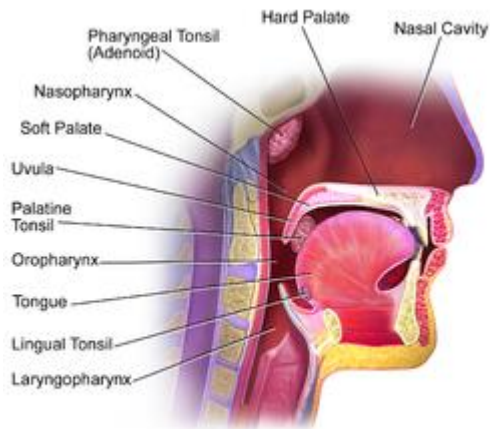
Placement of the Liver

Location of the liver.



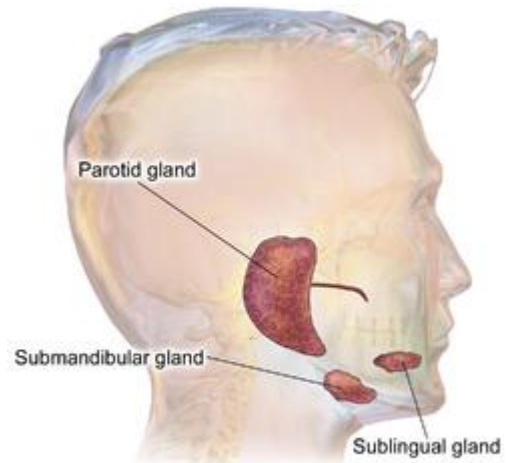
Tonsils

Tonsils and adenoid.



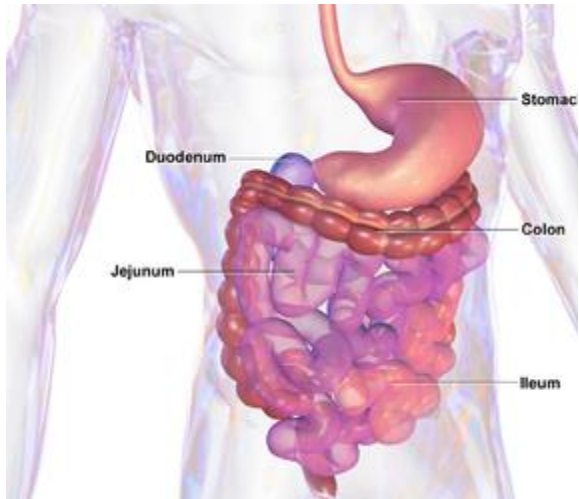
Tonsils and Throat

Throat.

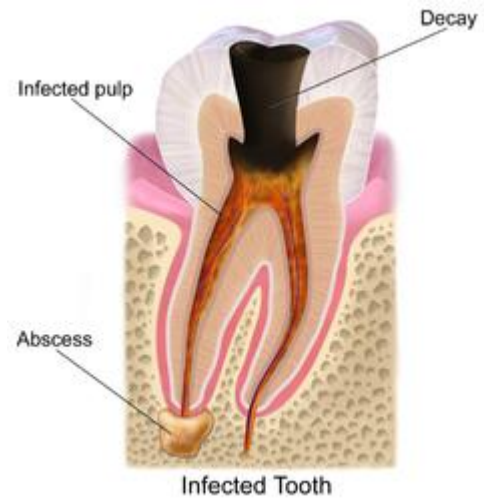


Salivary Glands

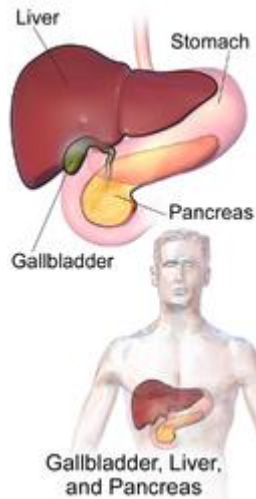
Salivary glands.



Gastrointestinal system.



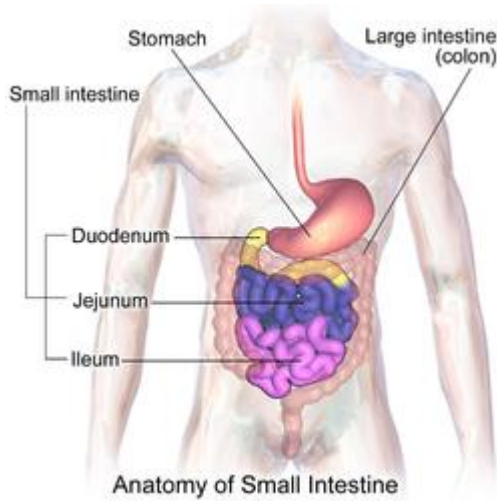
Tooth decay.



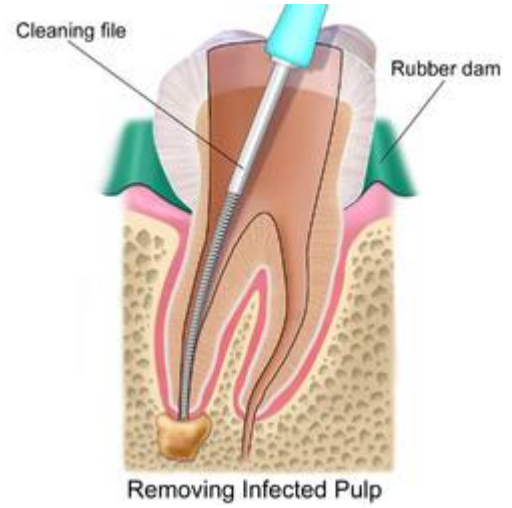
Gallbladder, liver and pancreas



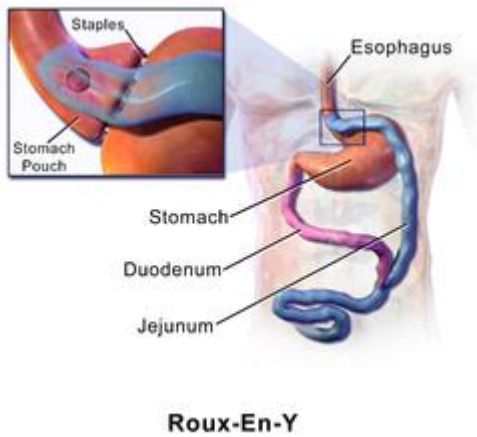
Vertical banded gastroplasty surgery.



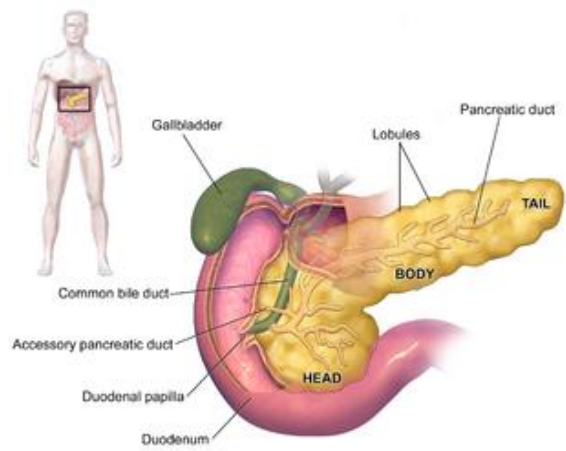
Small intestine anatomy



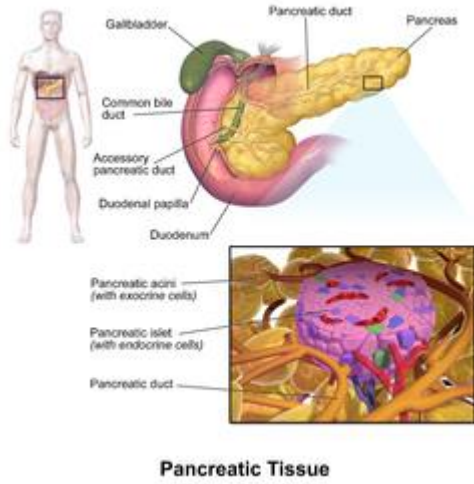
Endodontic therapy of a root canal.



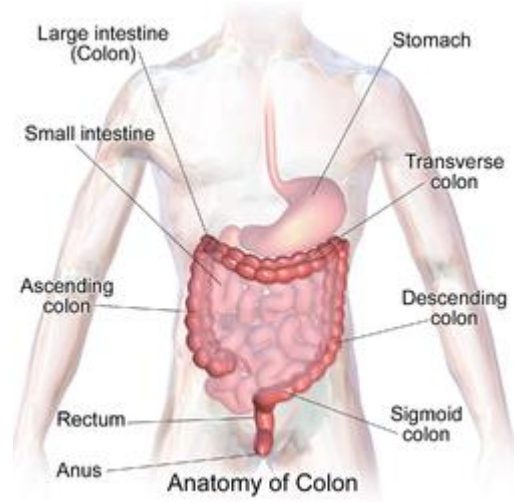
Roux-en-Y anastomosis.



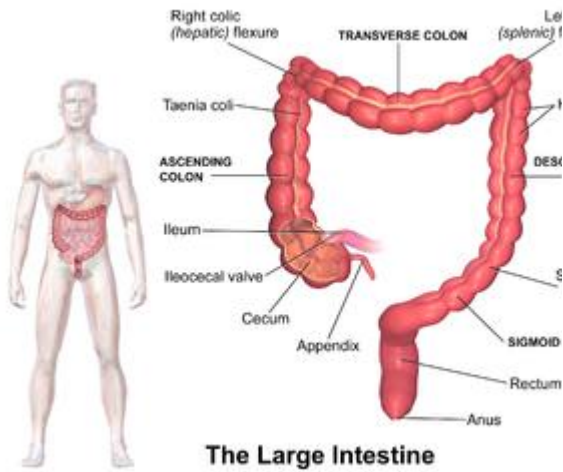
Pancreas anatomy



Pancreatic tissue



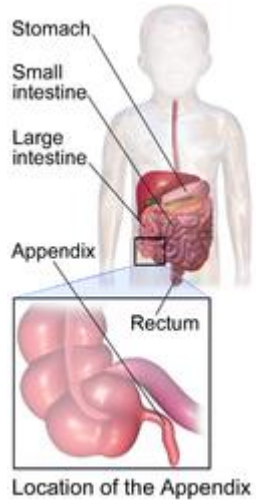
Large intestine.



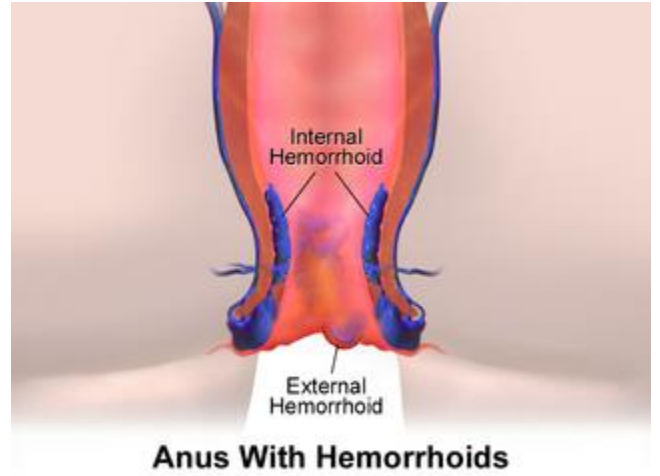
Large intestine.



Adjustable gastric banding



Appendix in a child.

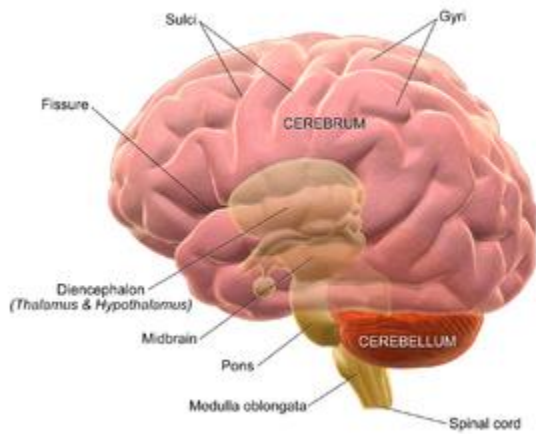


Hemorrhoids.

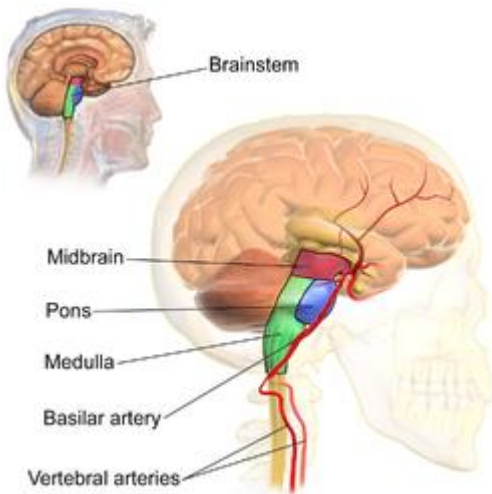


Neurology

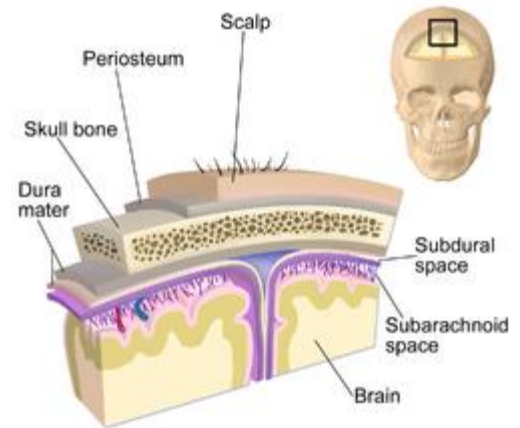
An Introduction to Brain Structures



Brain structures.



Brain stem anatomy.

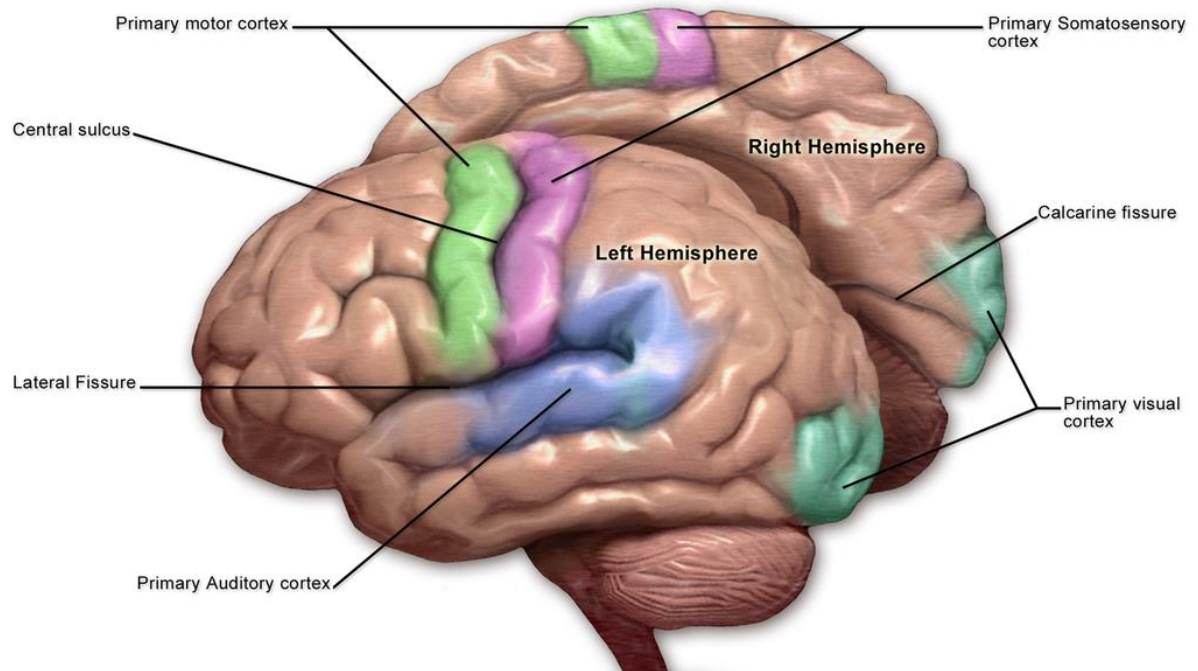
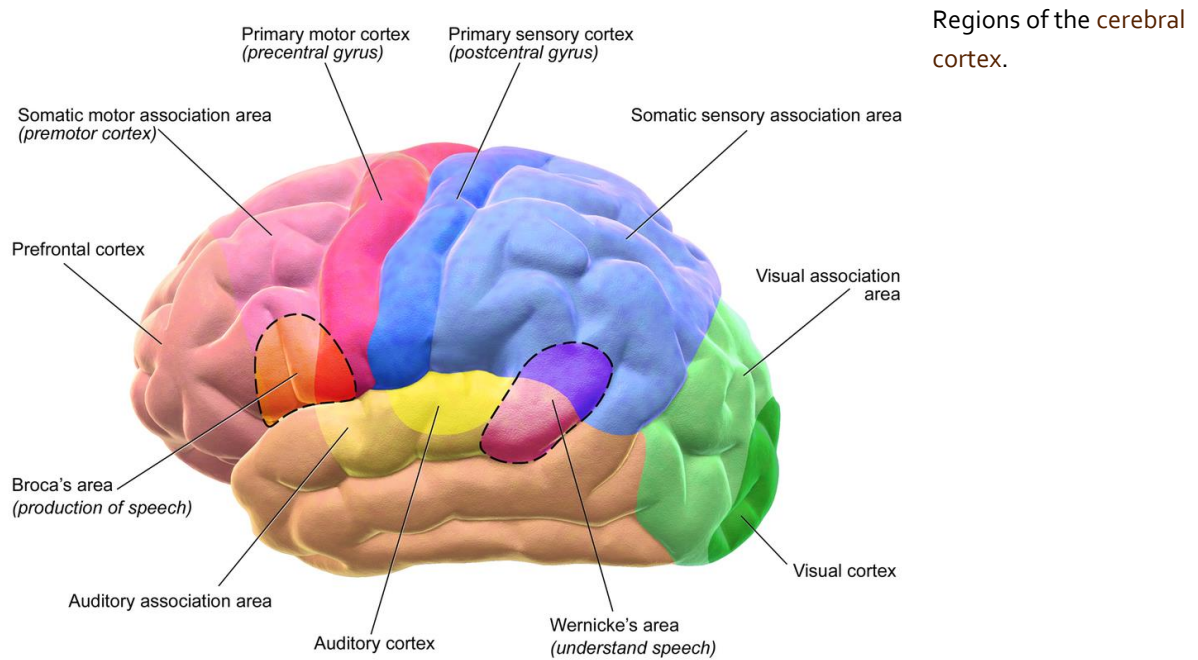


Layers covering the Brain

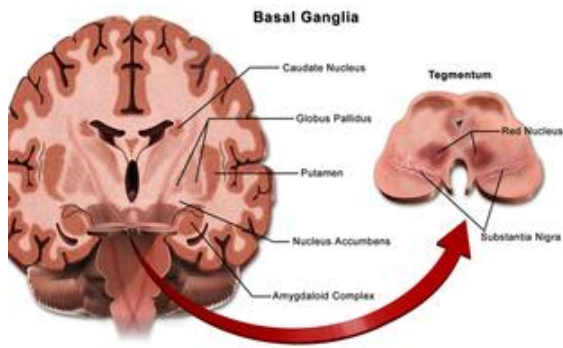
Layers of the scalp.



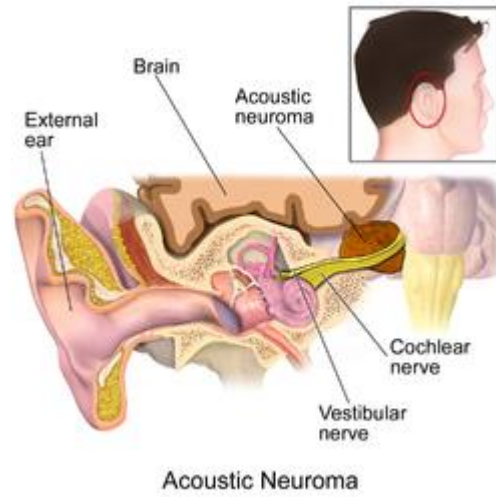
Motor and Sensory Regions of the Cerebral Cortex



Primary motor, somatosensory, auditory and visual cortex.



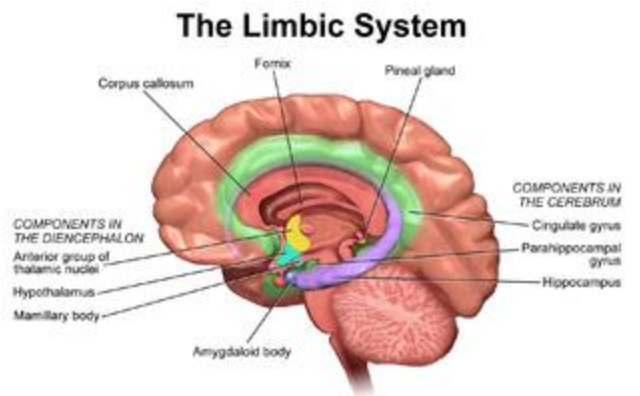
Basal ganglia.



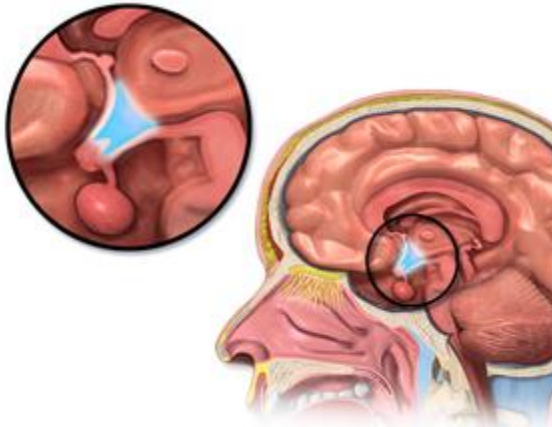
Acoustic neuroma.



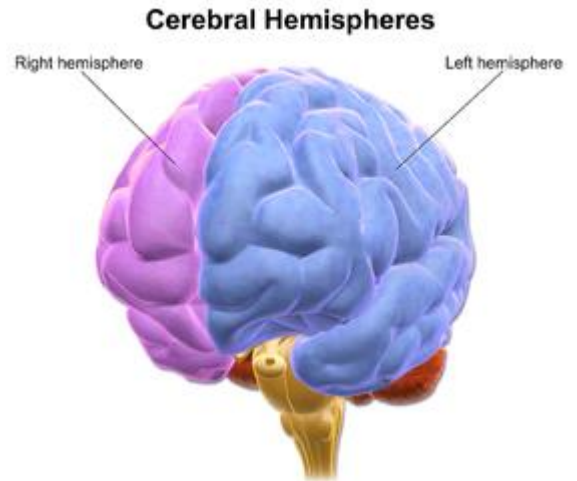
Acoustic neuroma.



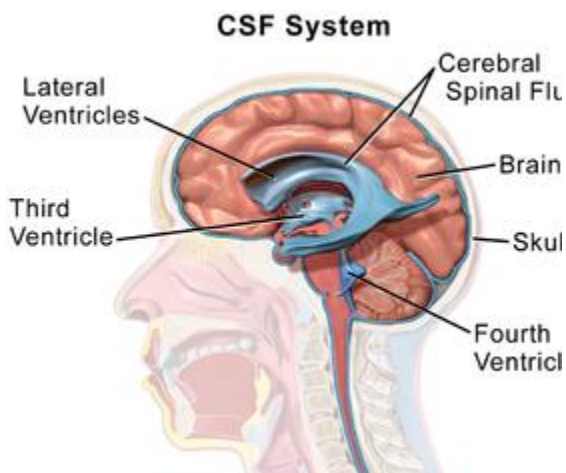
Limbic system.



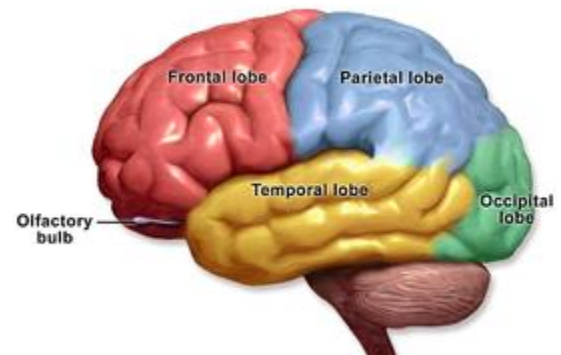
Hypothalamus location.



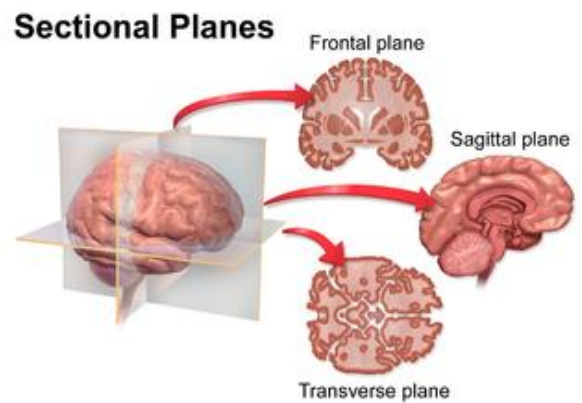
Cerebral hemispheres



Ventricular system.



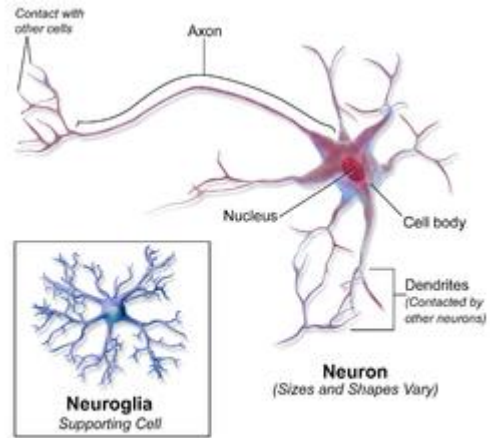
Brain lobes.



Anatomical planes of the brain.

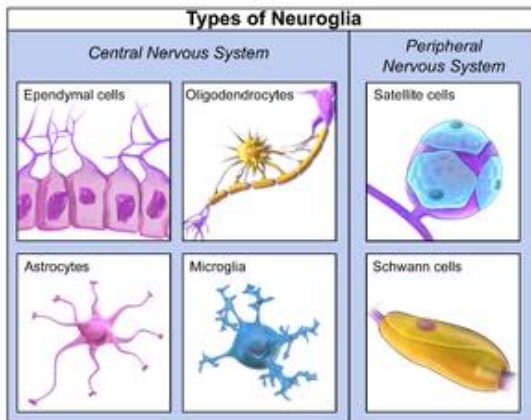


Dura mater of the spine.

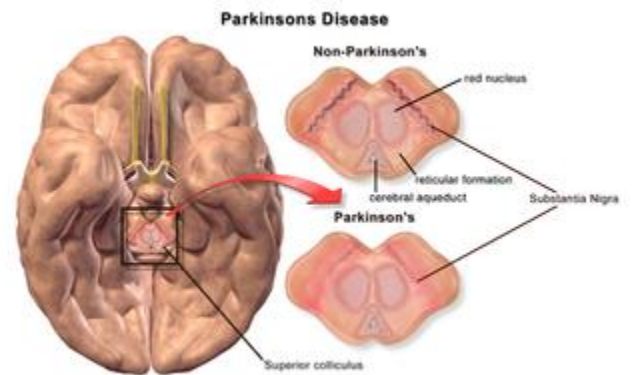


Neural Tissue

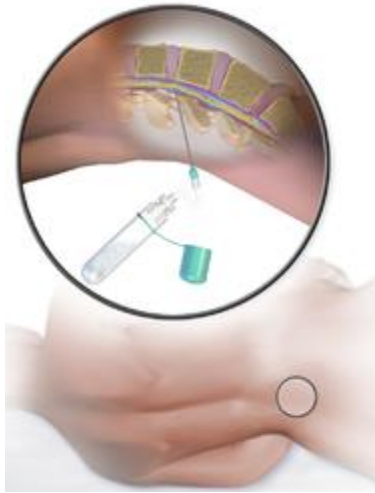
Nervous tissue.



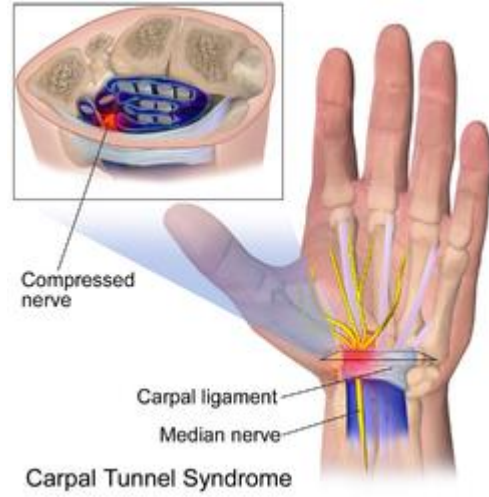
Types of neuroglia cells.



Parkinson's disease.



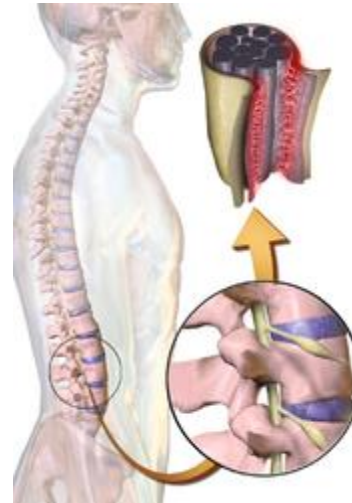
Lumbar puncture.



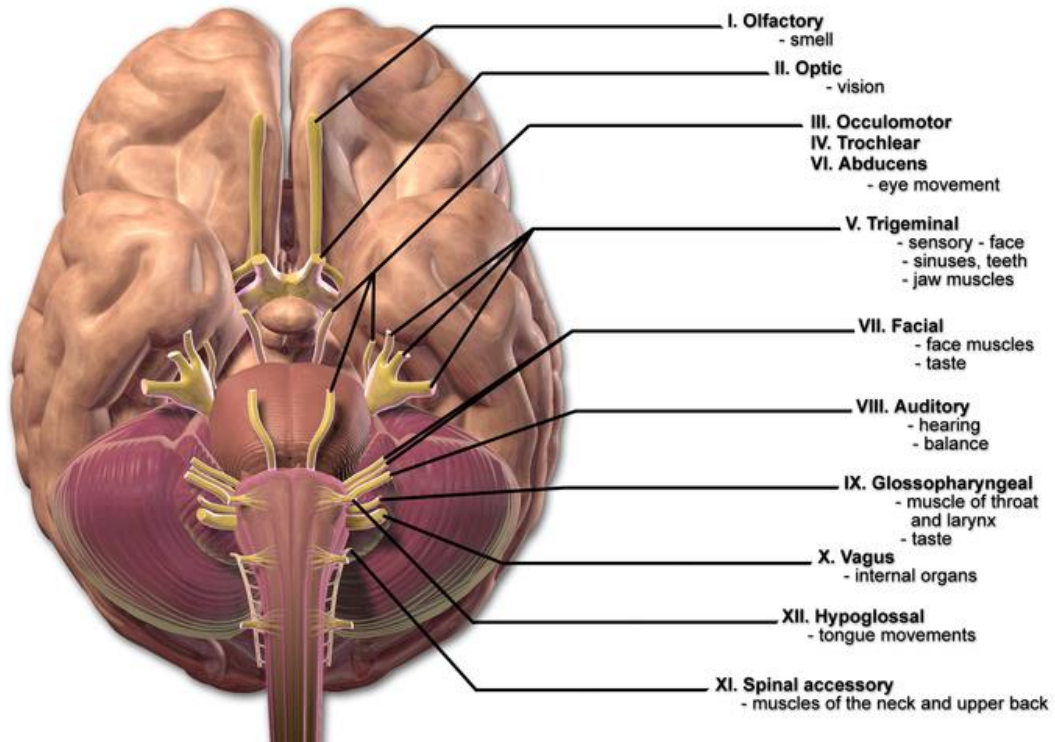
Carpal tunnel syndrome.



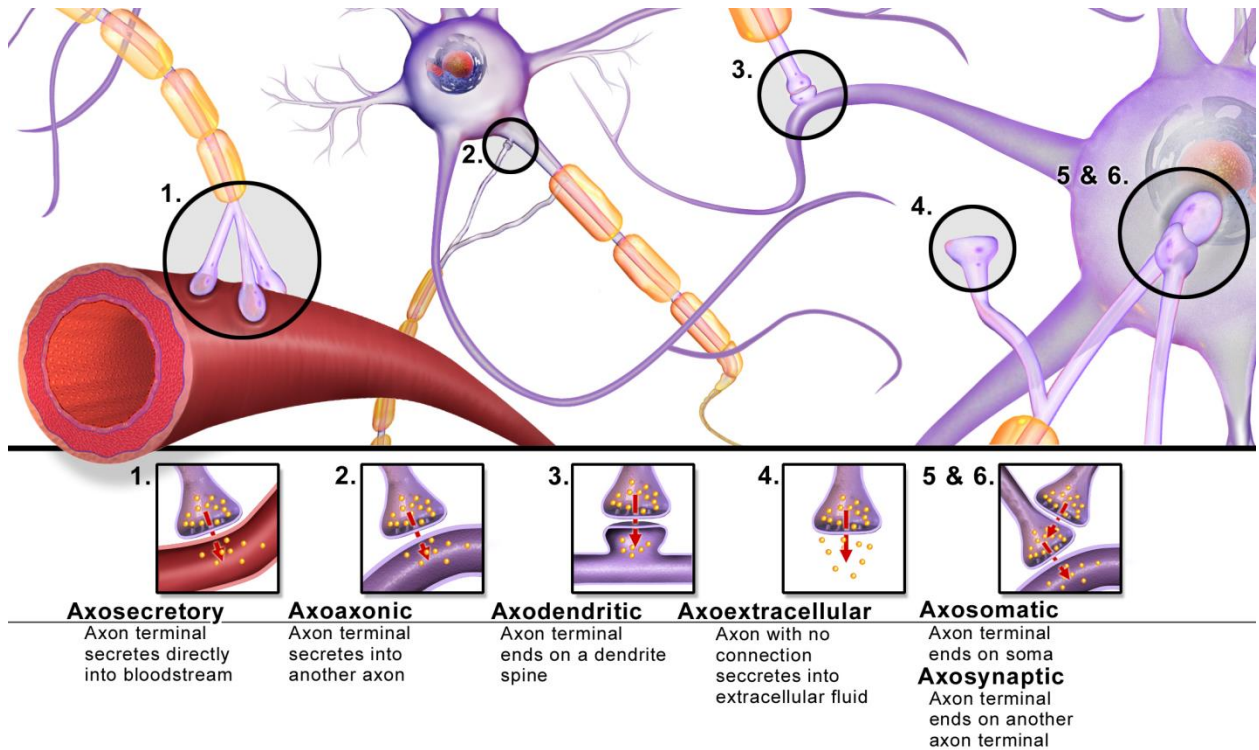
Spinal stenosis.



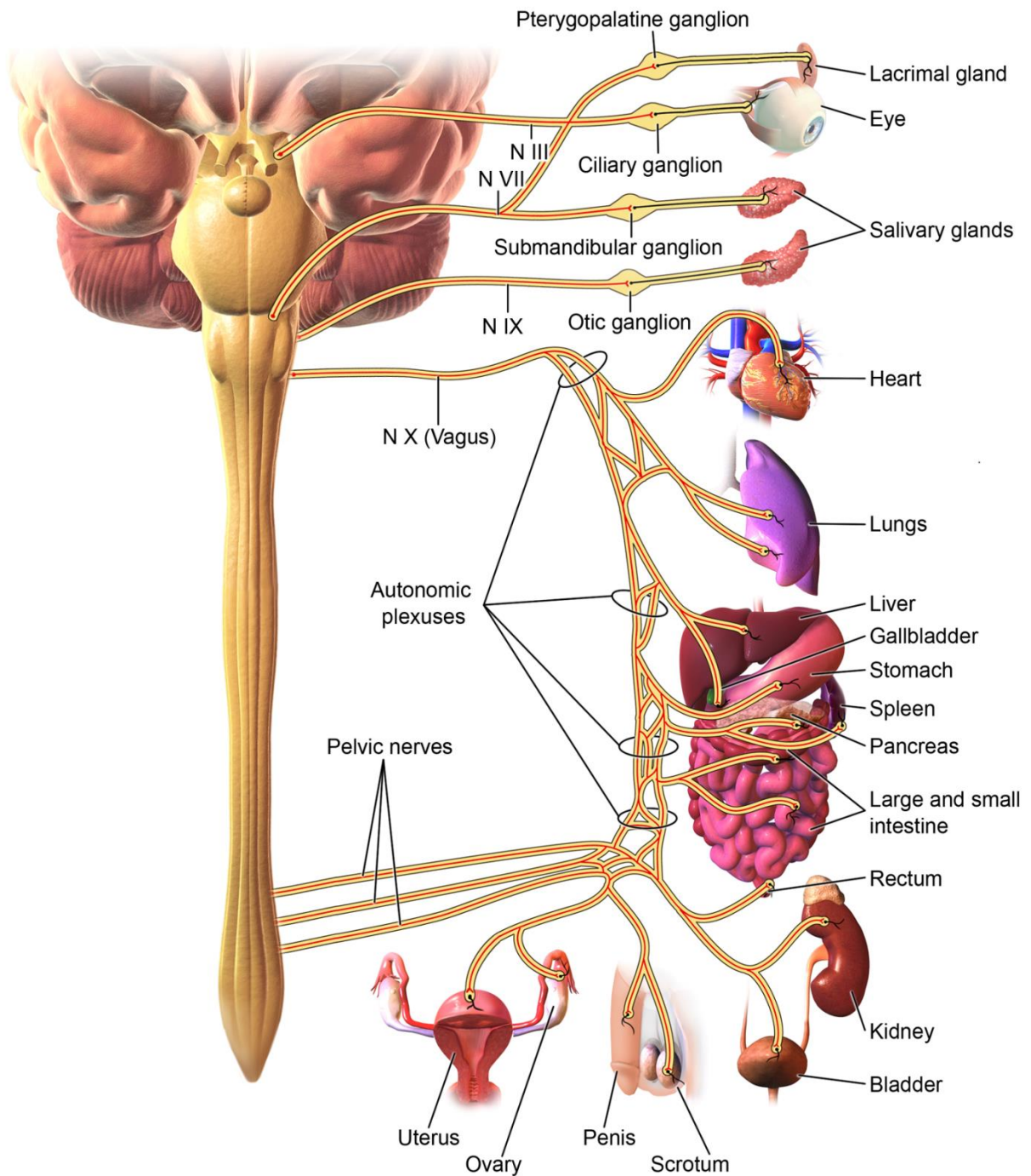
Arachnoiditis.



Cranial nerves.

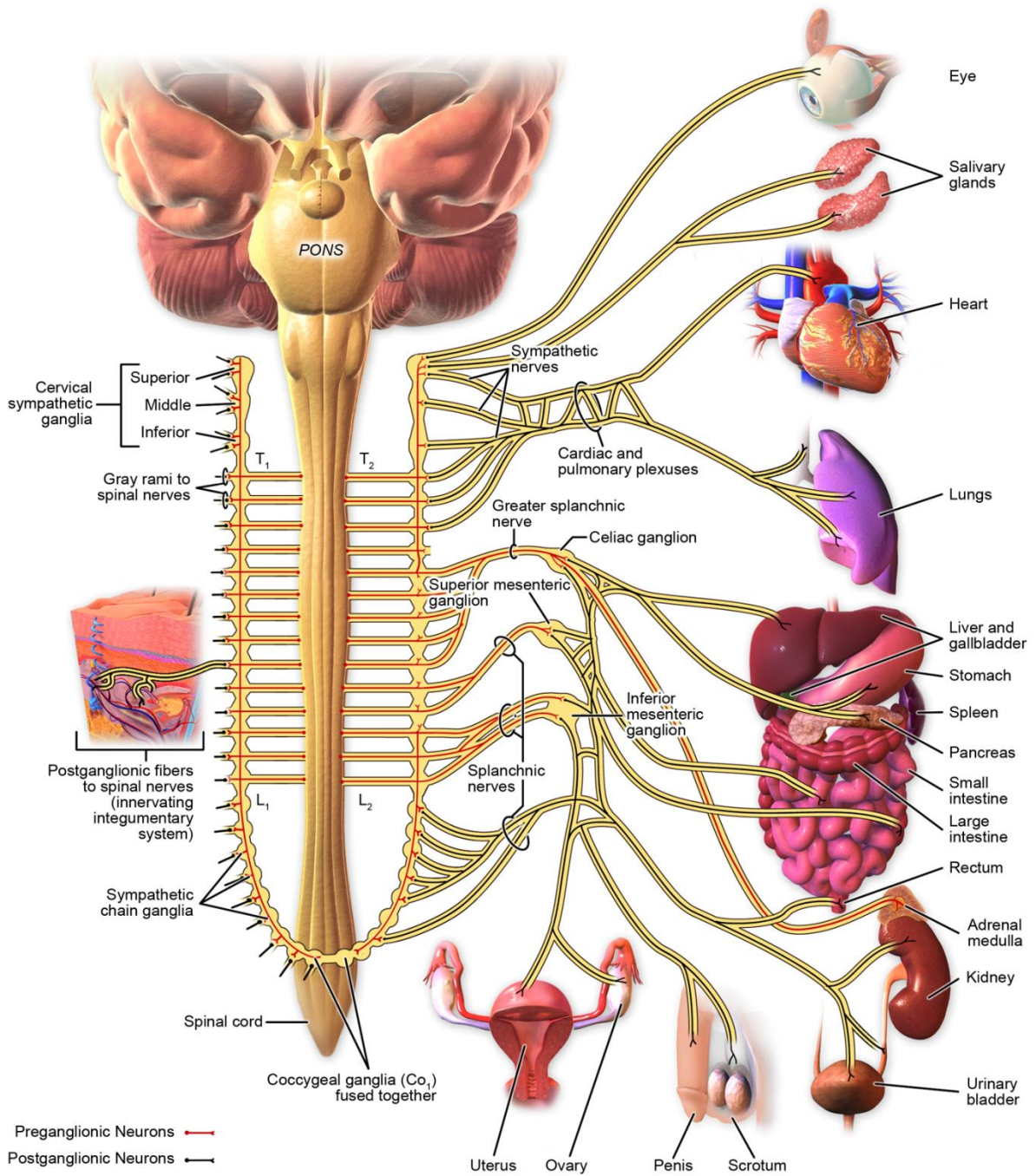


Synapse types.



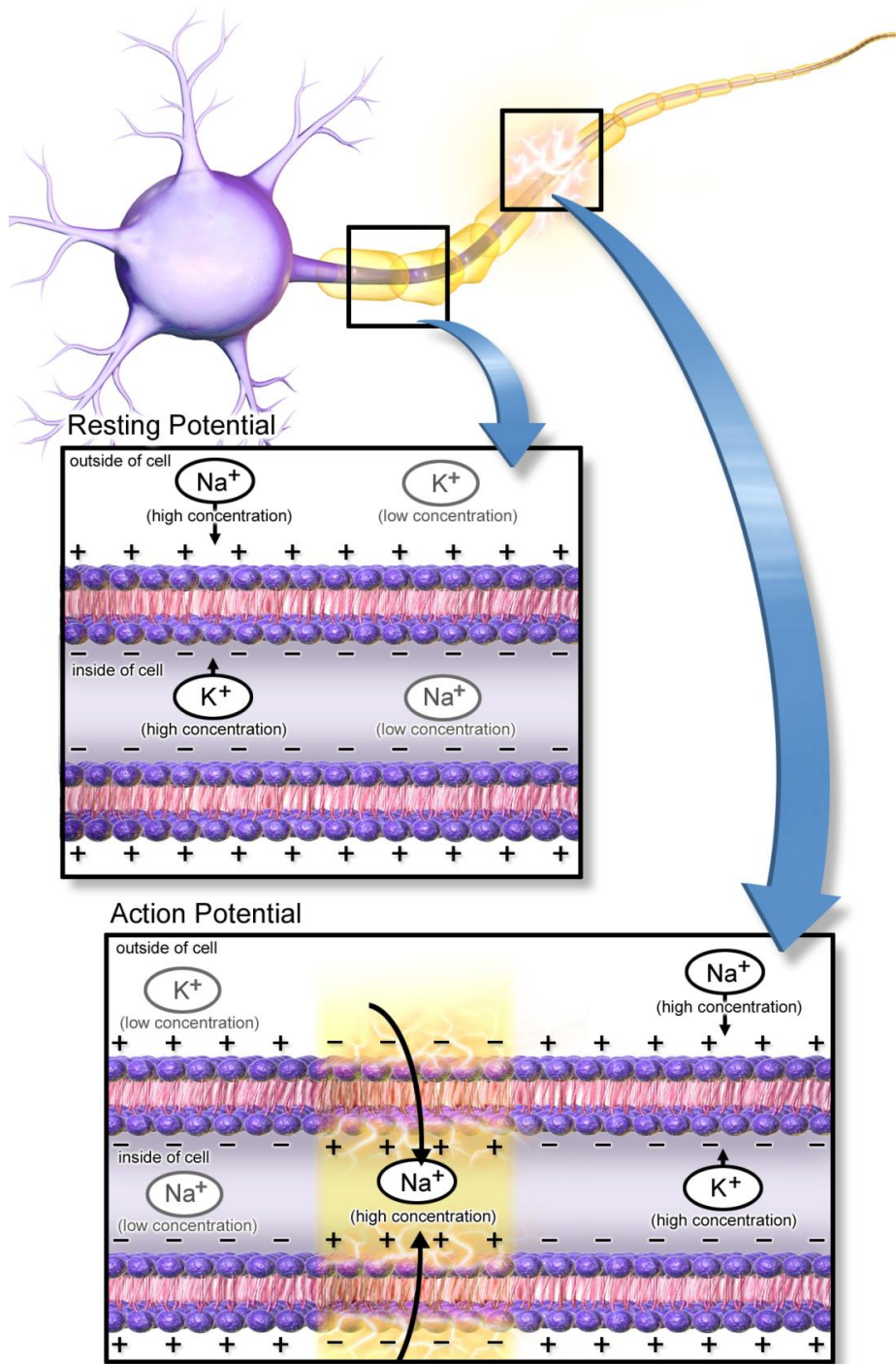
Parasympathetic Innervation

Innervation of the parasympathetic system.



Sympathetic Innervation

Innervation of the sympathetic system.



Action potential.



Vertebral



Normal vertebral column.



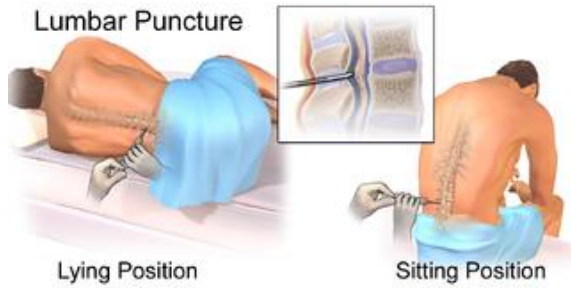
Cervical spine.



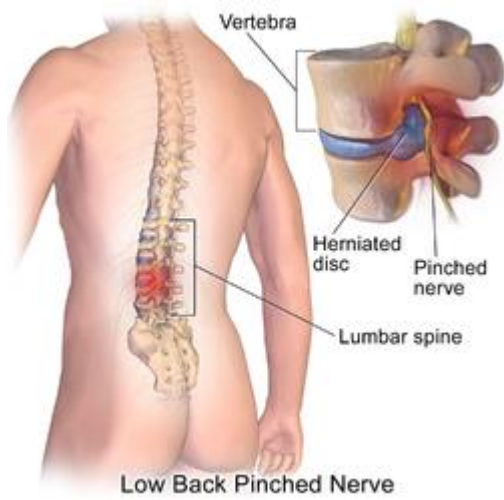
Facet joints.



Lumbar spine.



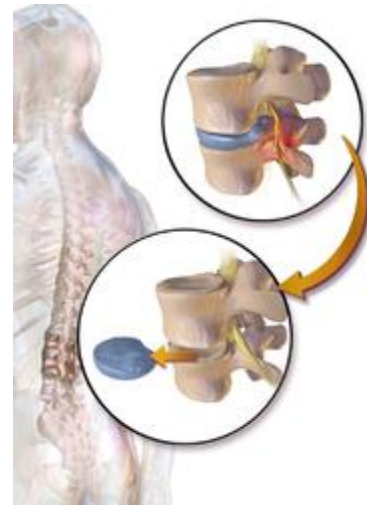
Lumbar puncture.



Lumbar disc herniation



Harrington rods



Discectomy.



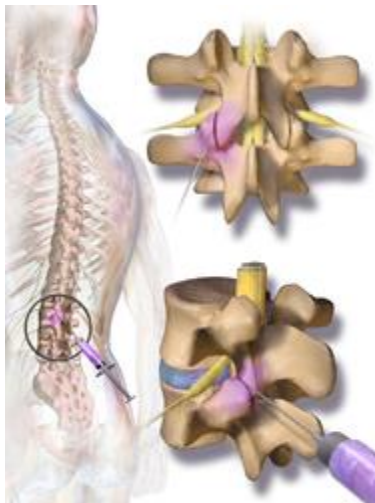
Compression fracture.



Ankylosing spondylitis.



Epidural steroid injection.



Facet joint injection.

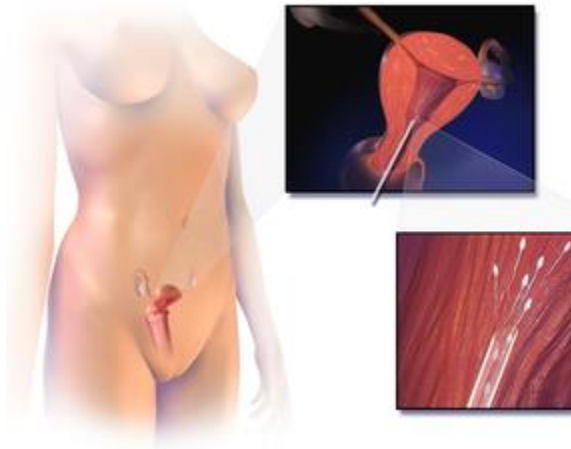


Spinal disc herniation.



Scoliosis.

Obstetrics and gynecology

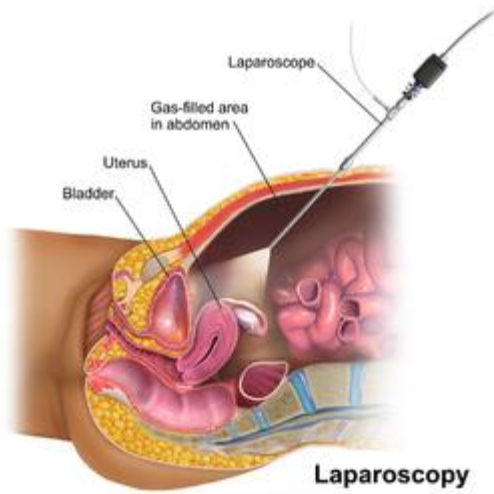


Artificial insemination.

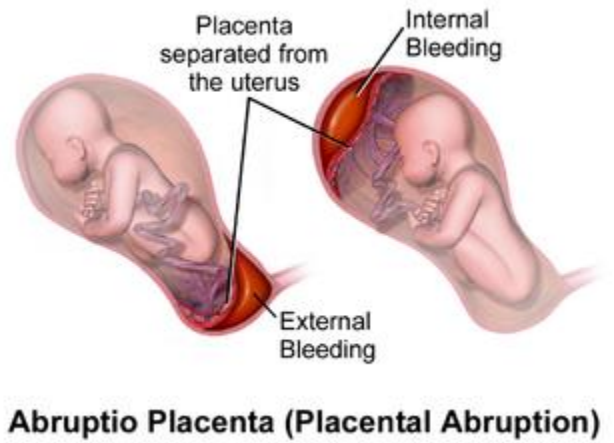


Pregnancy

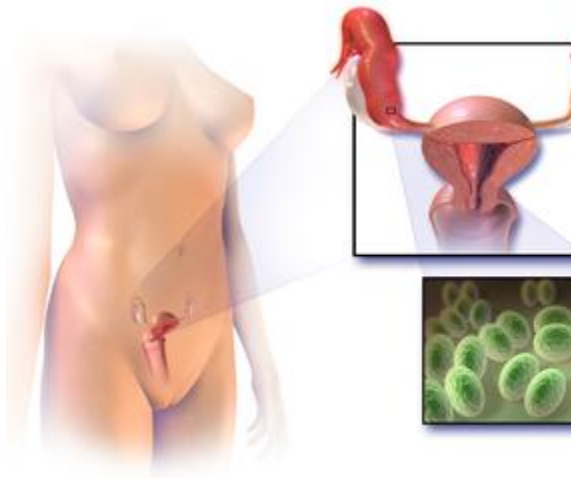
Pregnancy.



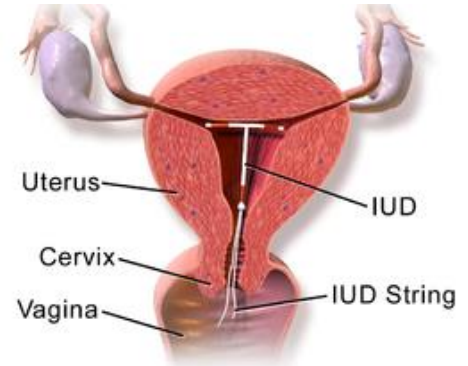
Laparoscopy.



Placental abruption.

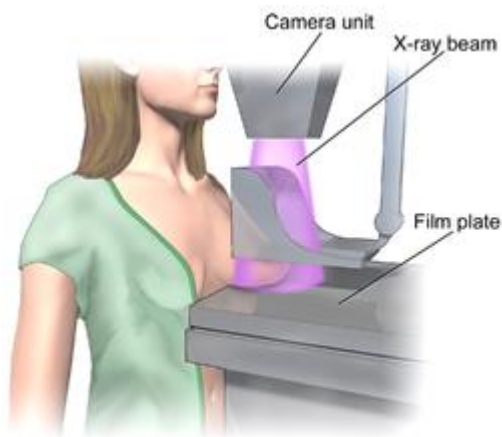


Pelvic inflammatory disease.



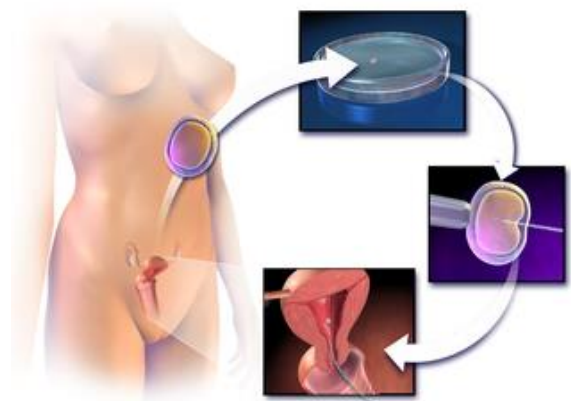
Intrauterine Device (IUD)

Intrauterine device.

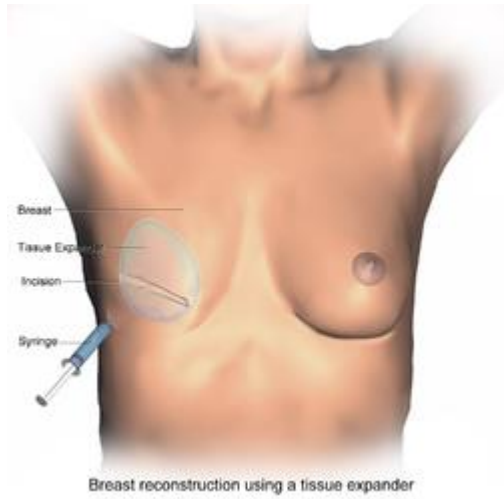


Mammogram

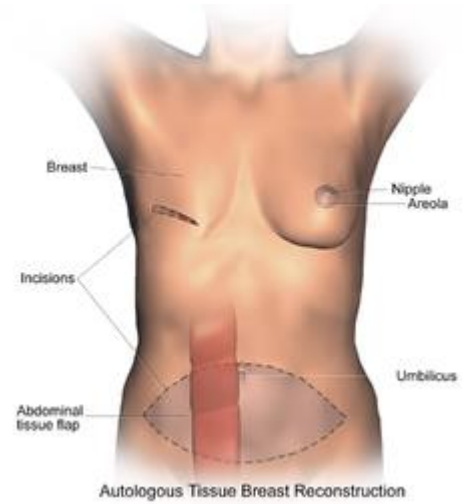
Mammography.



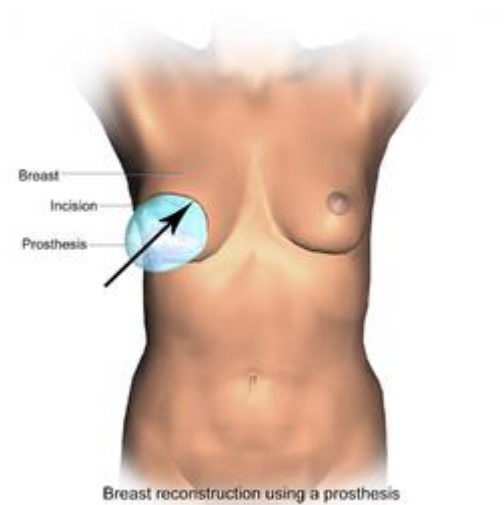
In vitro fertilization (IVF) with intracytoplasmic sperm injection (ICSI).



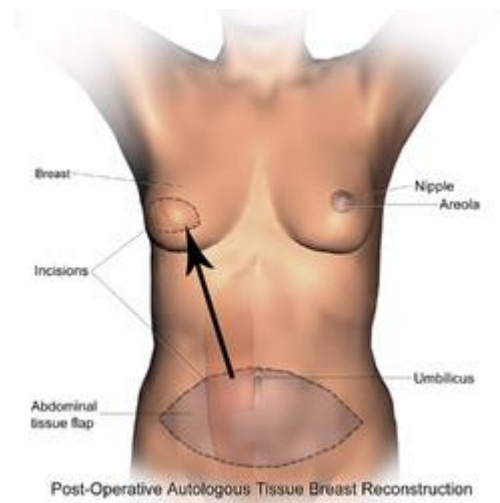
Breast reconstruction using a tissue expander.



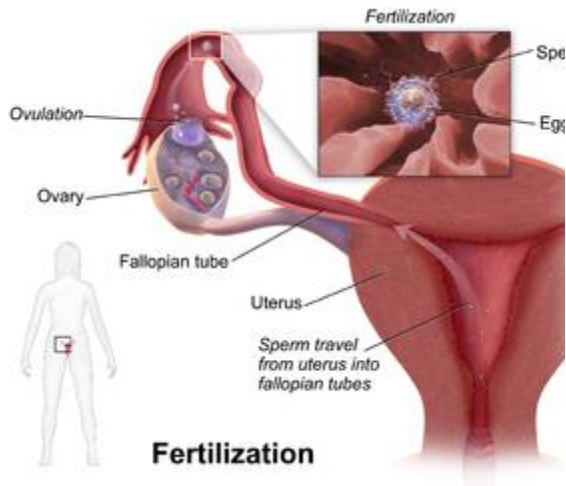
Breast reconstruction using autologous tissue (TRAM).



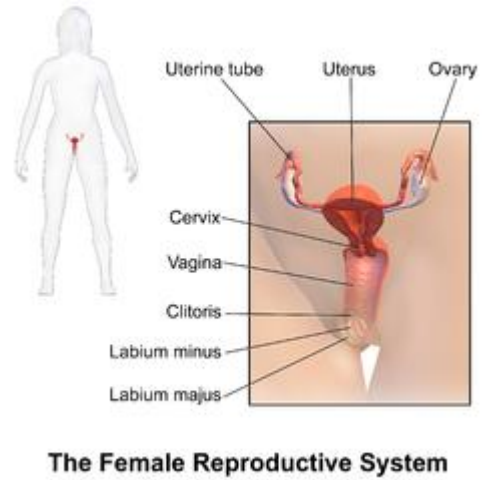
Breast reconstruction using a prosthesis.



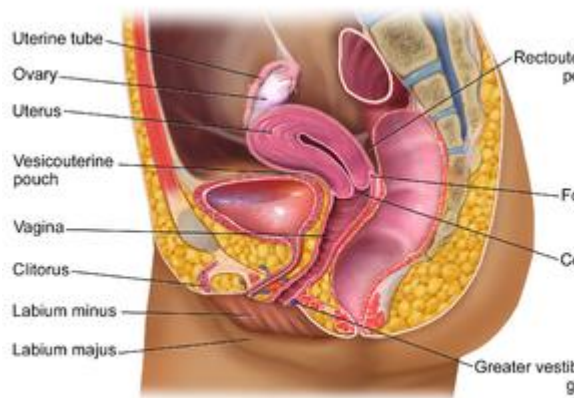
Post-operative state after breast reconstruction using autologous tissue (TRAM).



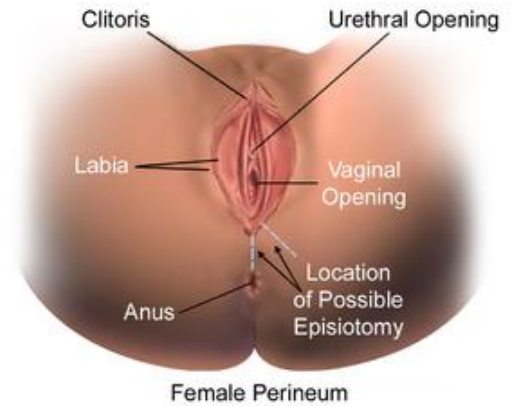
Fertilization.



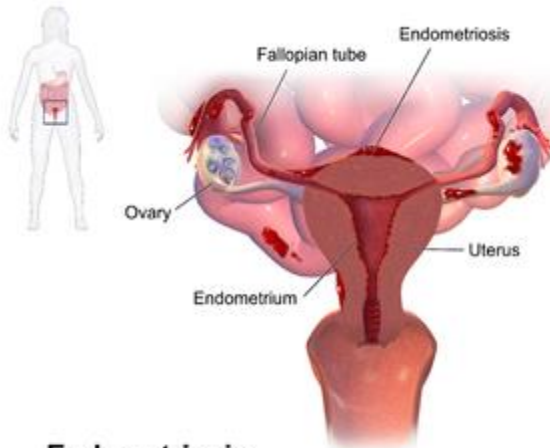
Female reproductive system.



Female reproductive system.

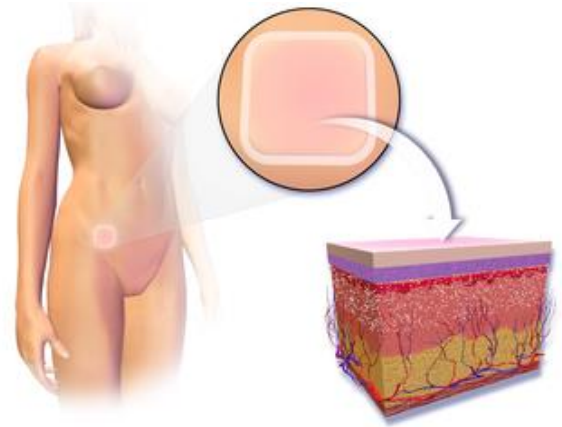


Episiotomy.

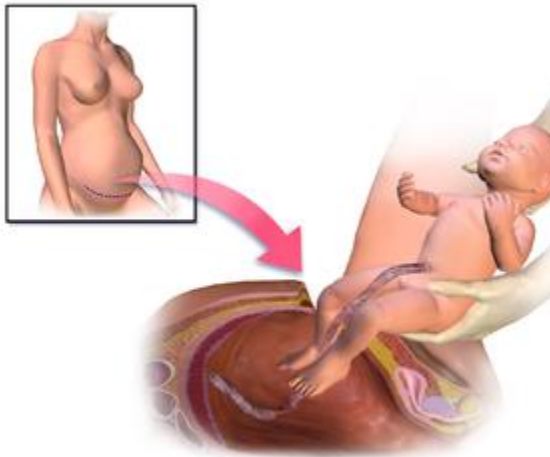


Endometriosis

Endometriosis.



Contraceptive patch.



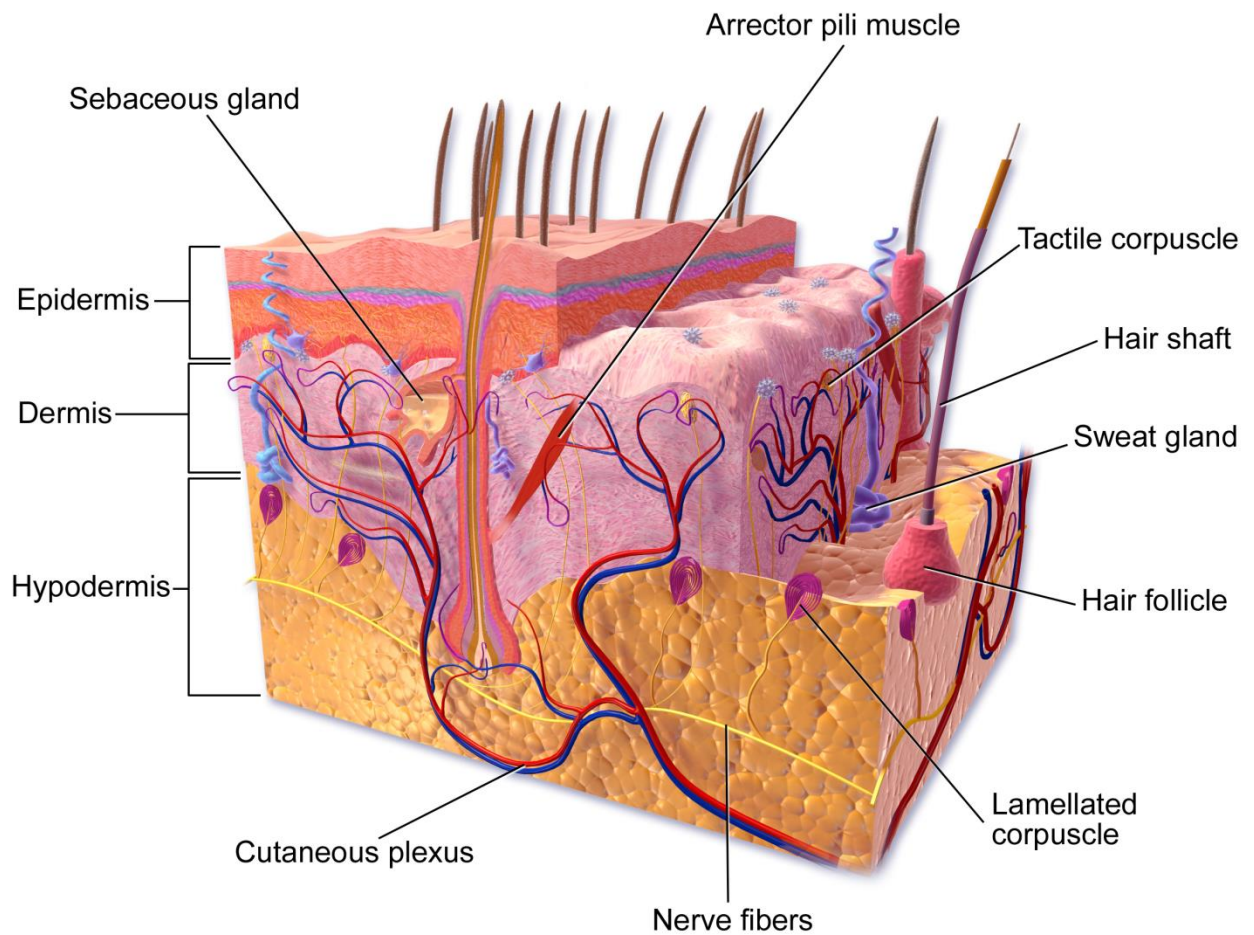
Caesarean section.



Correct latch-on in breastfeeding.

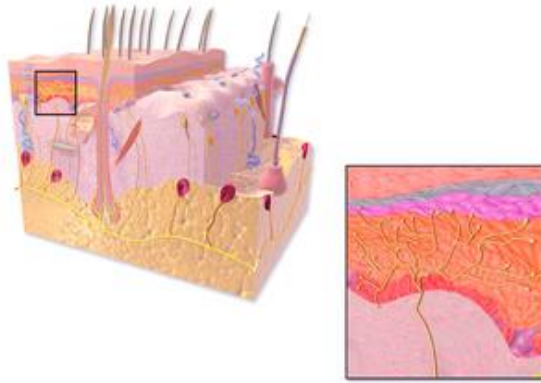


Dermatology



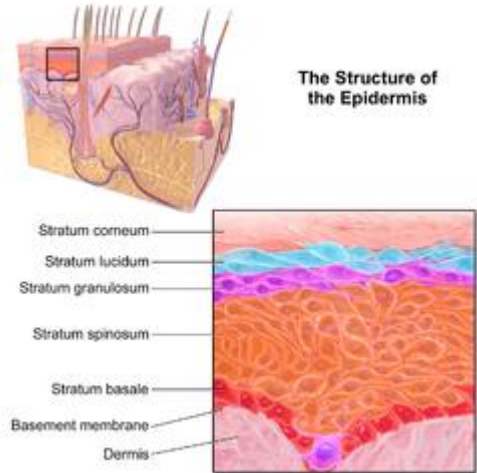
The Components of the Integumentary System

Anatomy of the skin.

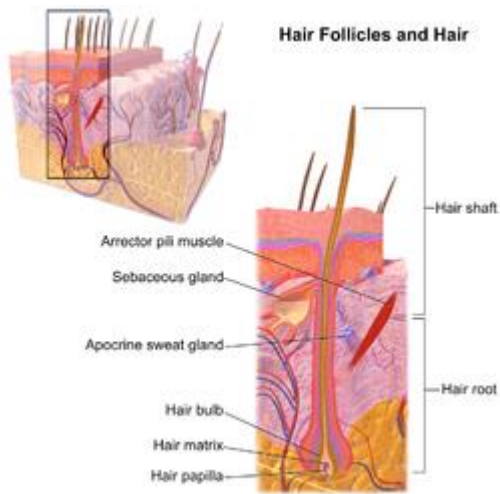


Free Nerve Endings

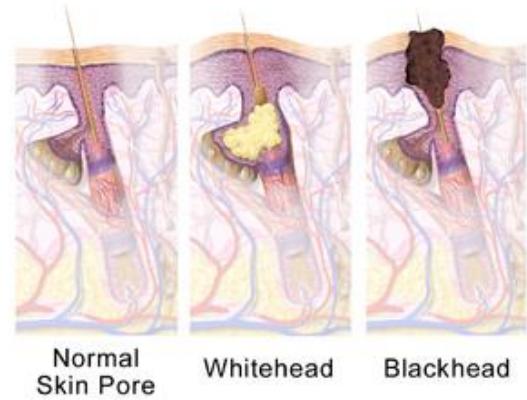
Free nerve endings of the skin.



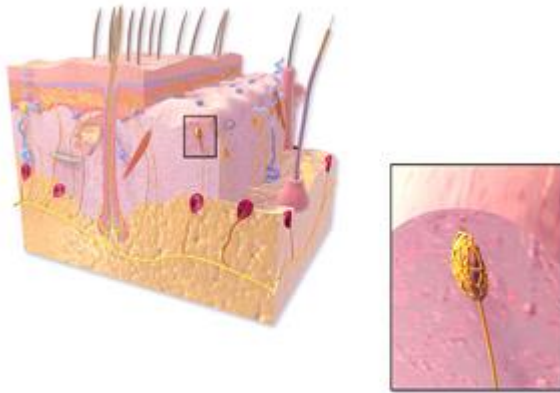
Epidermis.



Hair follicle.

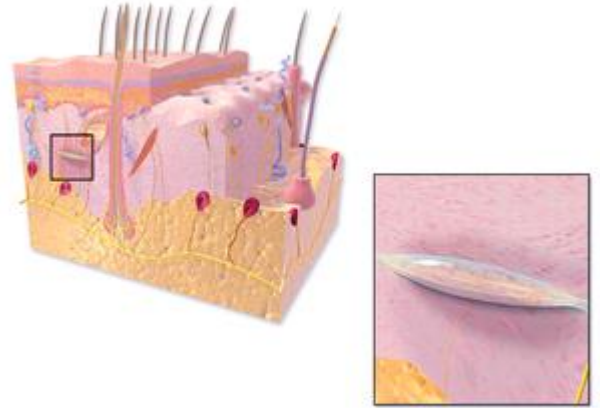


Sebaceous gland states.



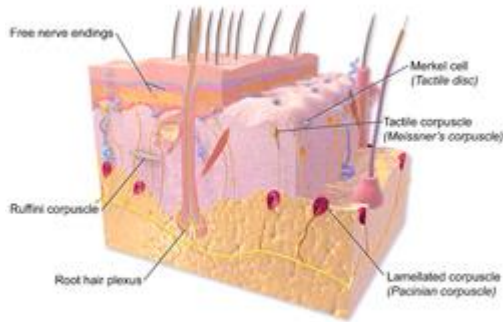
Tactile Corpuscle
(Meissner's Corpuscle)

Tactile corpuscle.



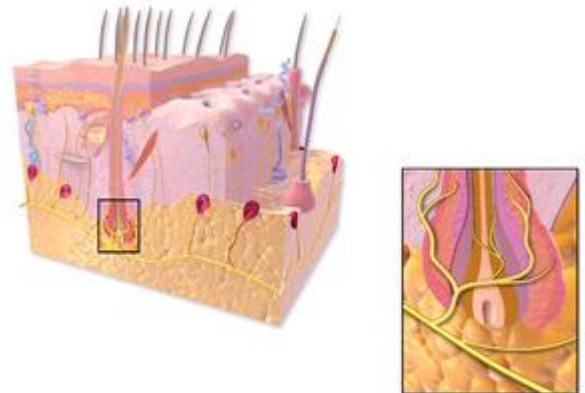
Ruffini Corpuscle

Ruffini corpuscle.



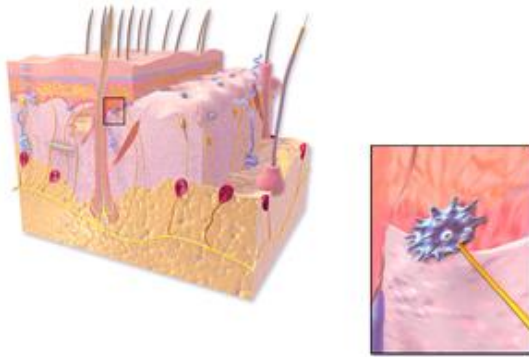
Tactile Receptors in the Skin

Tactile mechanoreceptors of the skin.



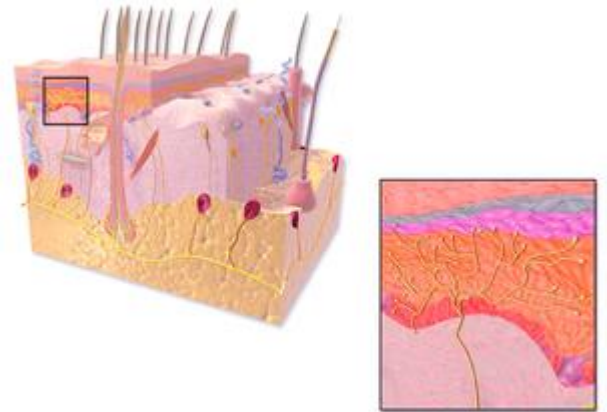
Root Hair Plexus

Hair plexus.



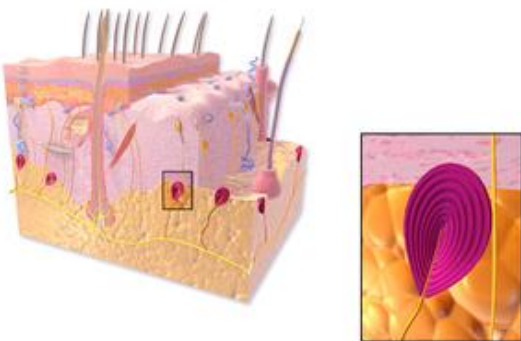
Merkel Cell
(Tactile Disc)

Merkel cell.



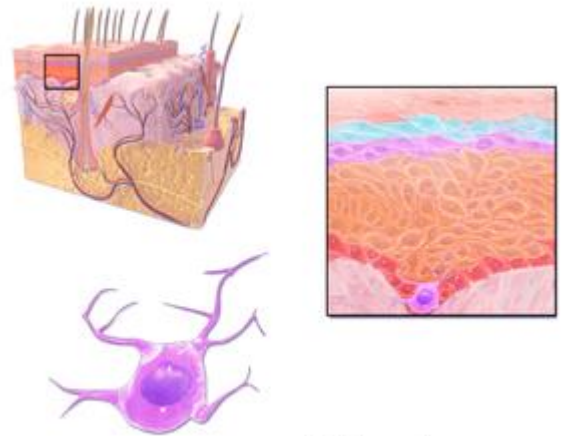
Free Nerve Endings

Free nerve endings.



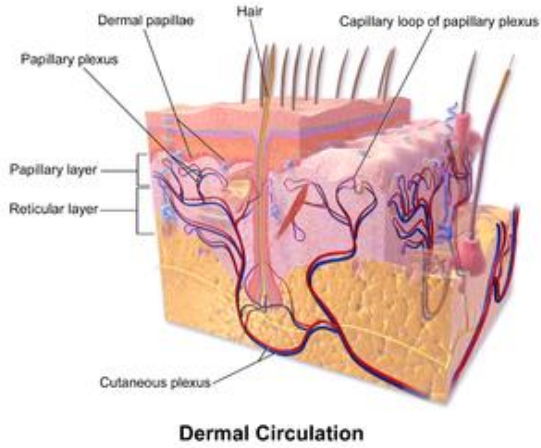
Lamellated Corpuscle
(Pacinian Corpuscle)

Lamellar corpuscle.

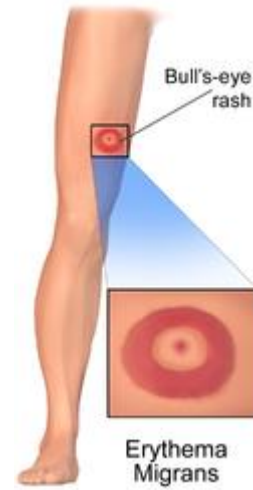


Melanocyte

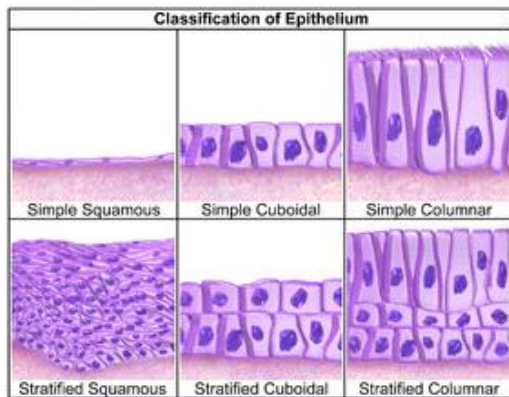
Location of the melanocyte.



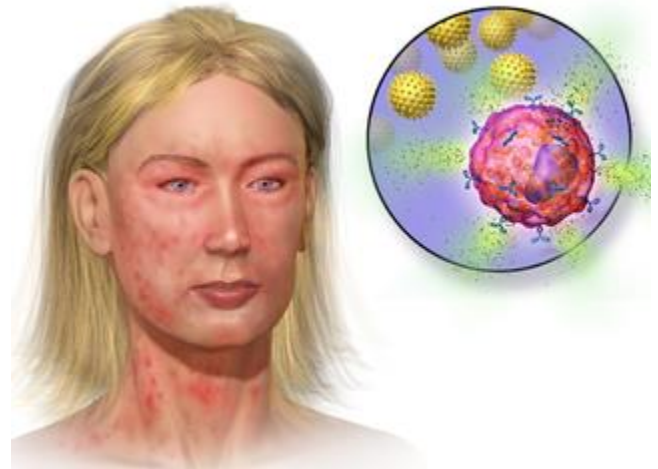
Blood supply of the dermis.



Rash of Lyme disease.



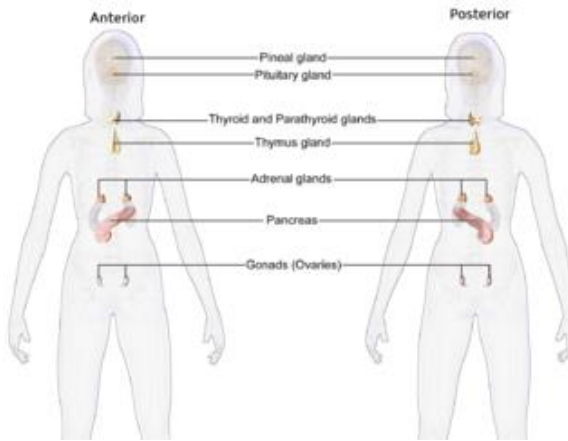
Epithelium classification.



Anaphylaxis.



Endocrine

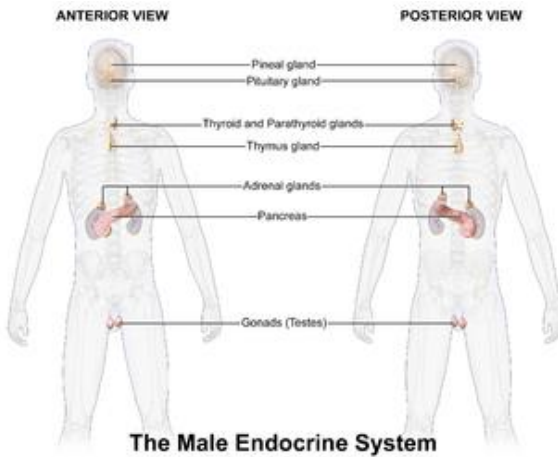


Endocrine system in the female.



Blood Glucose Meter and Test Strips

Blood glucose meter.

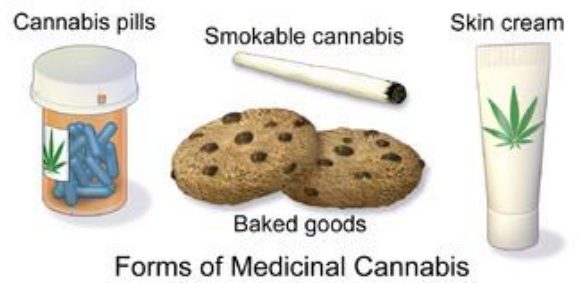


The Male Endocrine System

Endocrine system in the male



Usage of a blood glucose meter

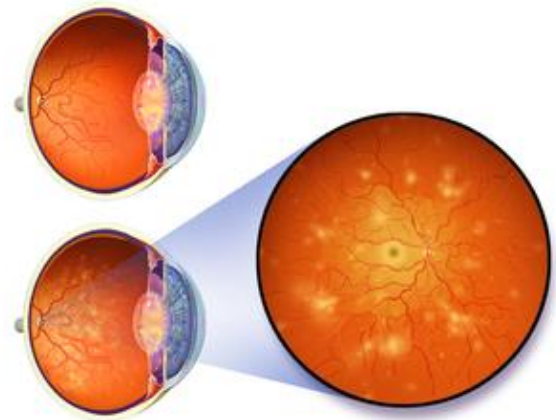


Forms of Medicinal Cannabis

Forms of medical cannabis.



Insulin pen and syringe.



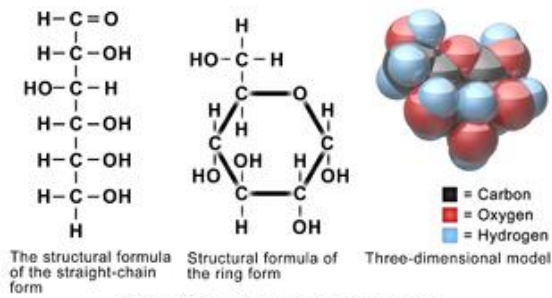
Diabetic retinopathy.



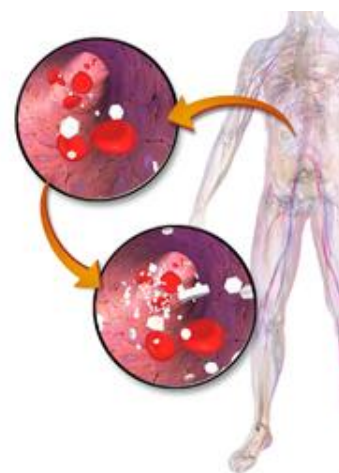
Priming an insulin pen.



Diabetic neuropathy.



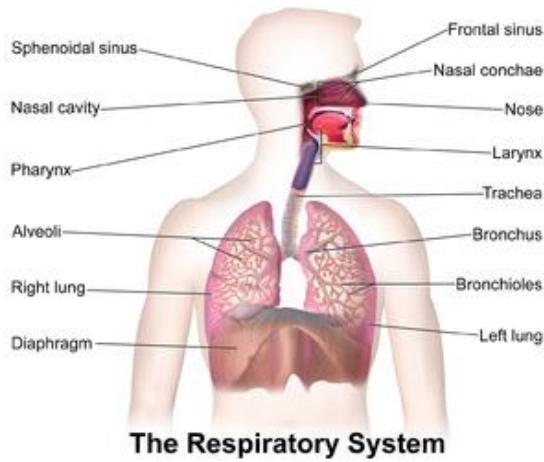
Glucose.



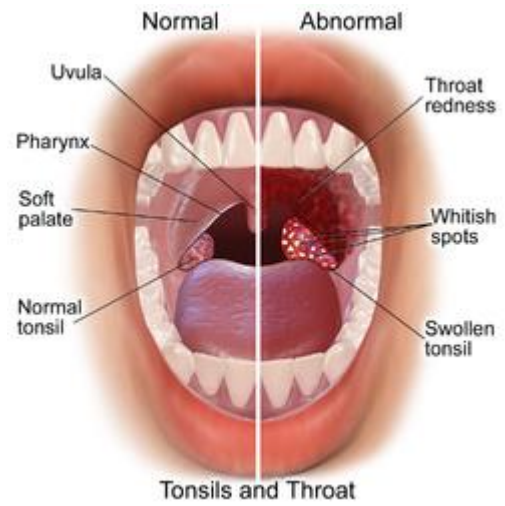
Hyperglycemia.



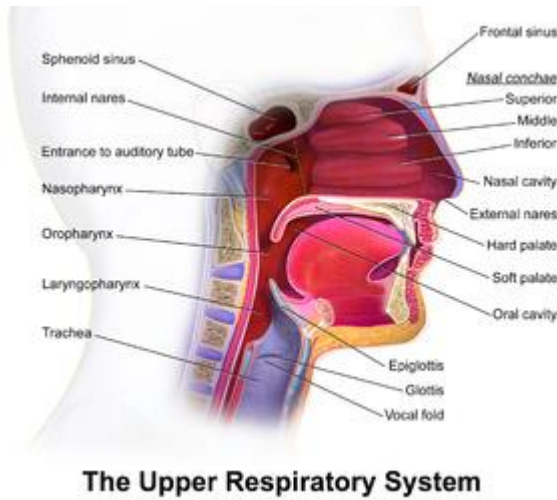
Respiratory



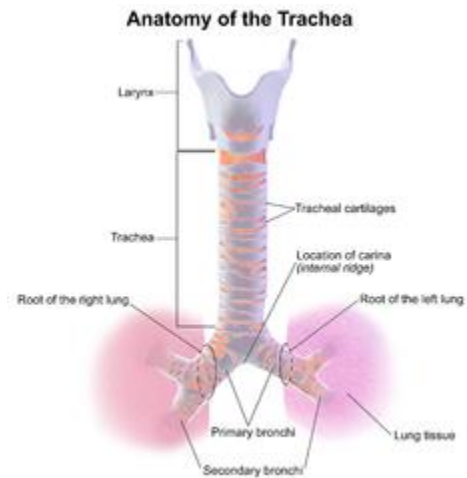
Respiratory system.



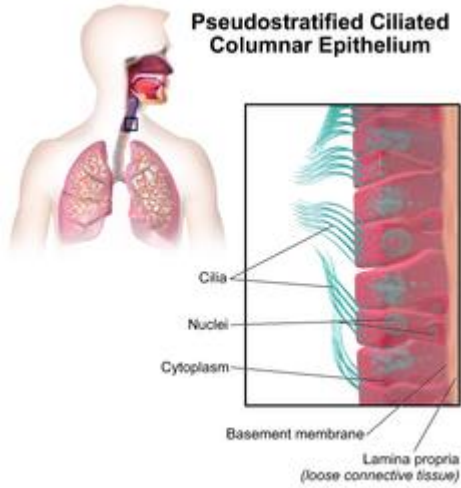
Anatomy of the tonsils and throat.



Upper respiratory tract.



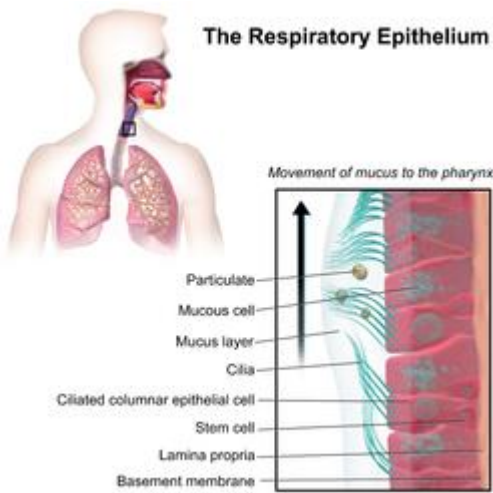
Anatomy of the trachea.



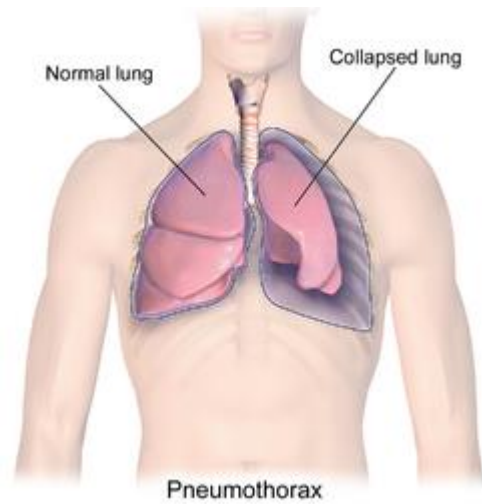
Pseudostratified columnar epithelium in the respiratory tract.



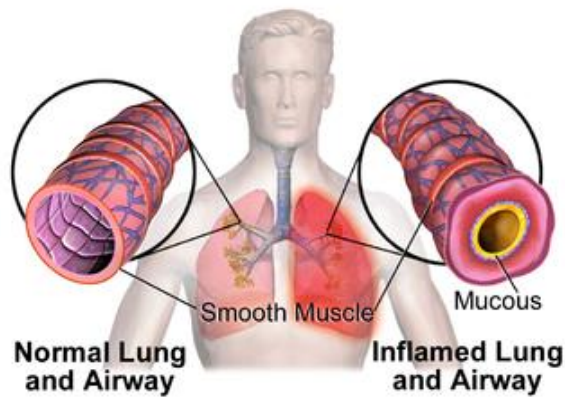
Sinitis.



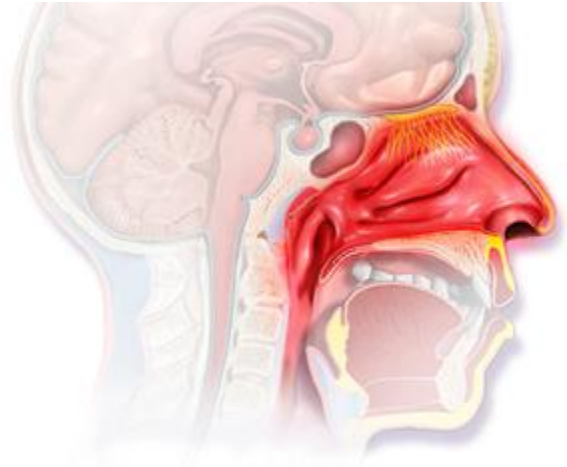
Respiratory epithelium.



Pneumothorax.



Normal airway versus airway with bronchoconstriction



Allergic rhinitis.



Diseases

Diseases not primarily belong in any of sections above.



Blue baby syndrome.



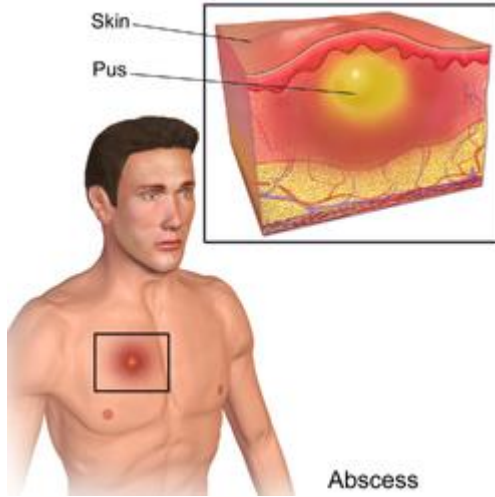
Allergic contact dermatitis



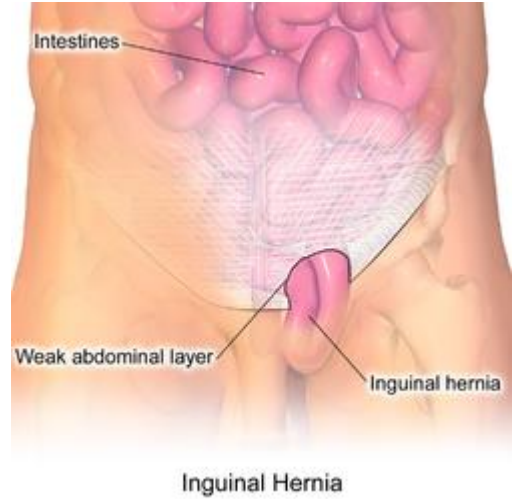
Angioedema.



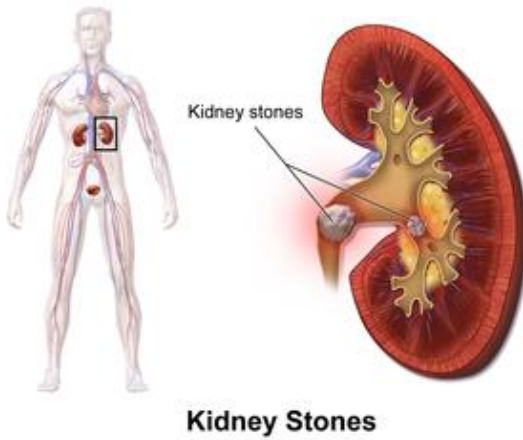
Allergic conjunctivitis.



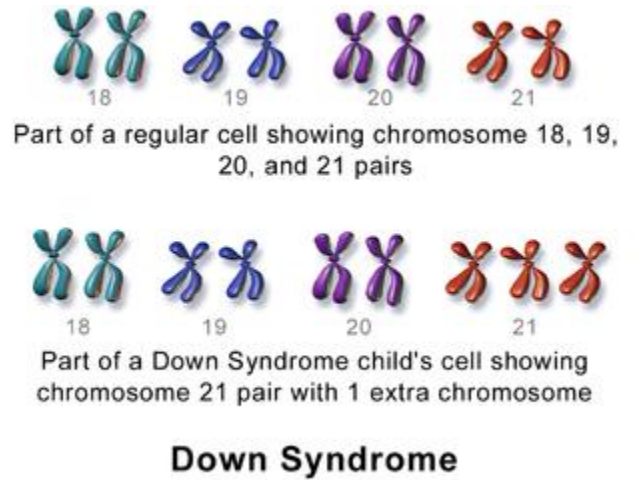
An abscess in the dermis.



Inguinal hernia.



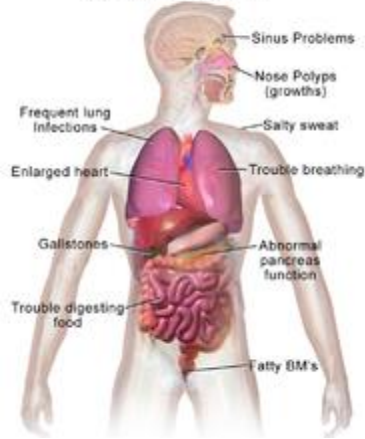
Kidney stones.



Karyotype in Down syndrome.



Health Problems with Cystic Fibrosis



Cystic fibrosis.



Bunion

Bunion.



Osteoporosis.



Male

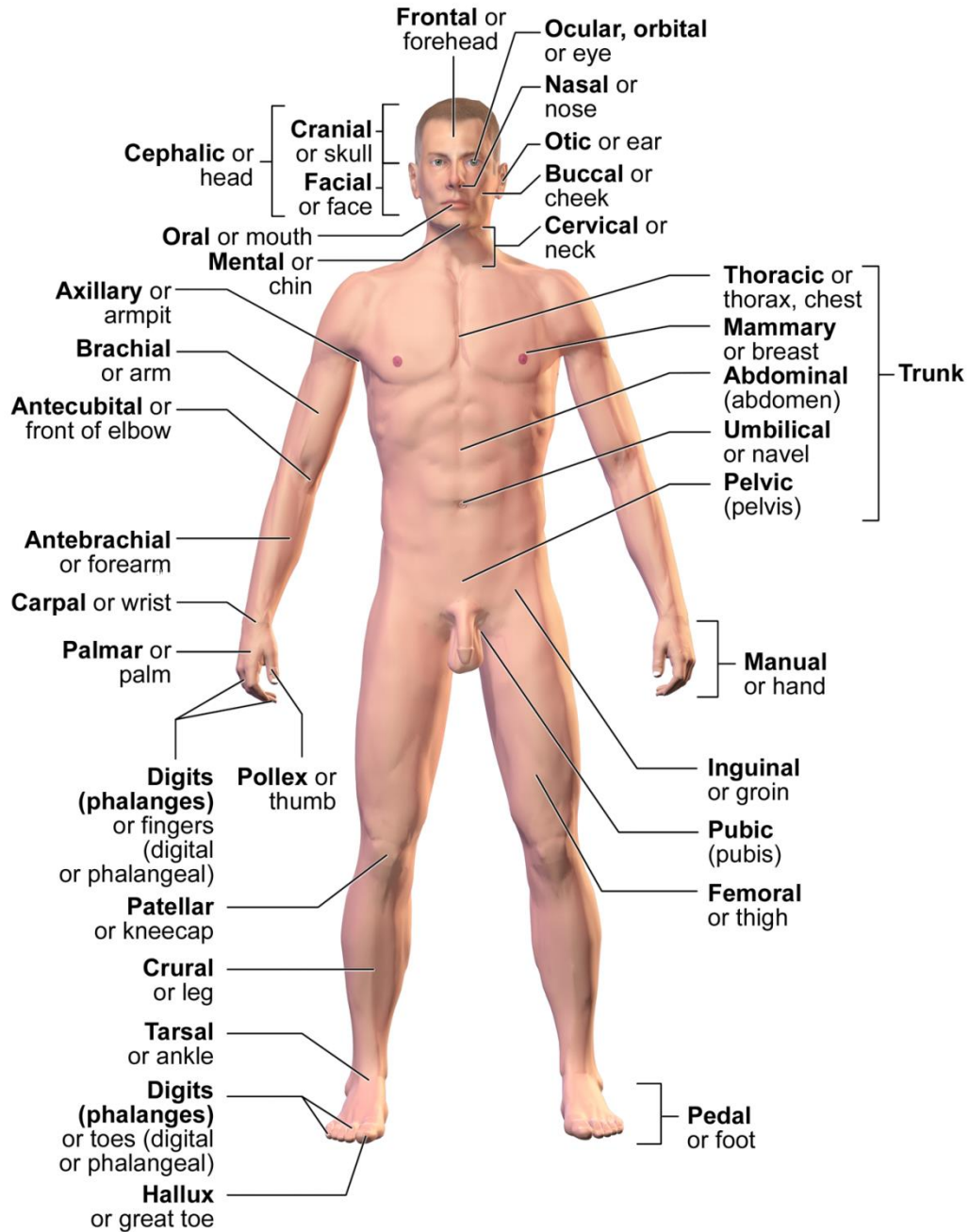
Female

Deer Ticks

Deer ticks

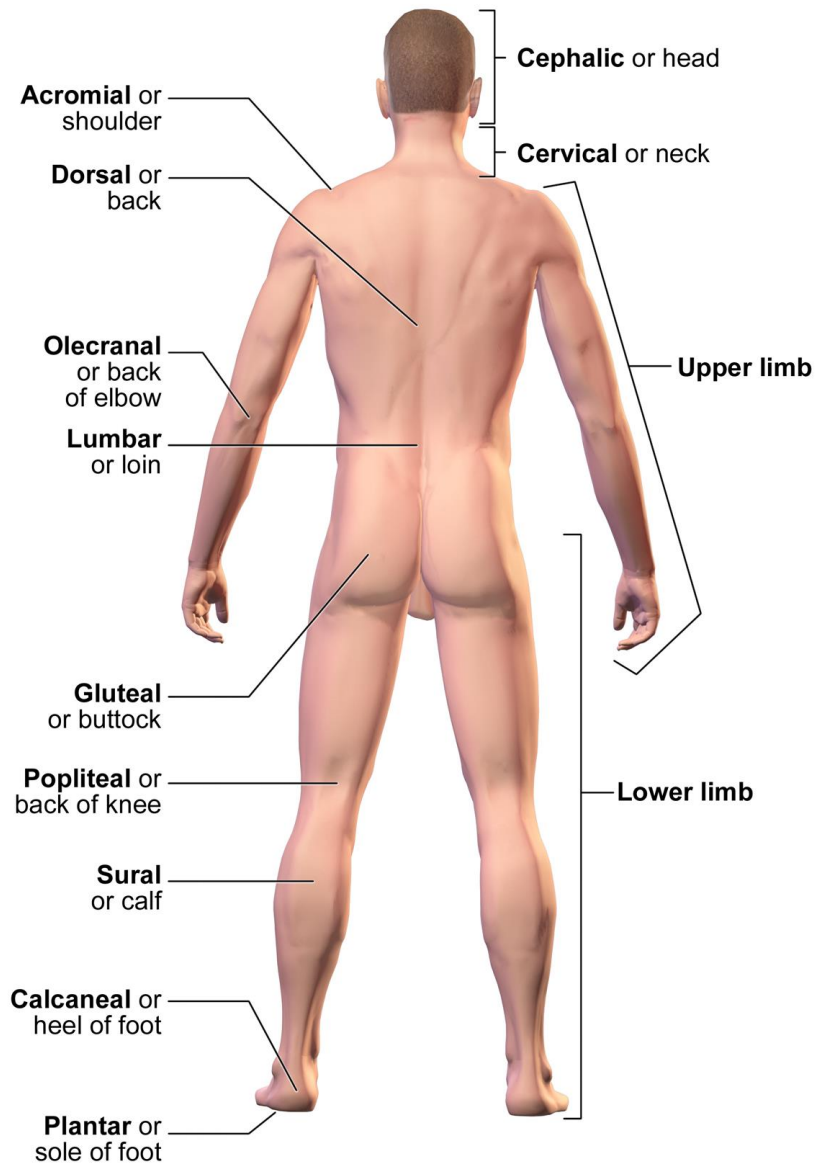


Other anatomy



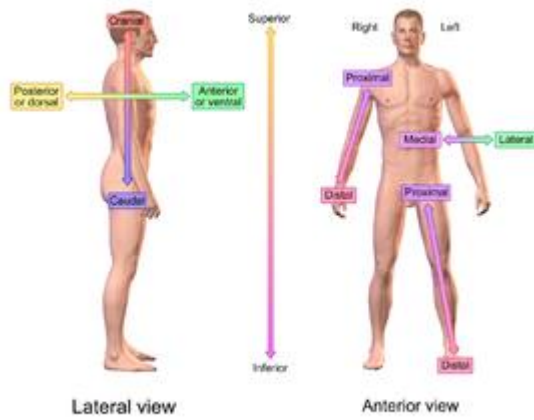
Anatomical Landmarks (Anterior View)

Landmarks of surface anatomy, anterior view.



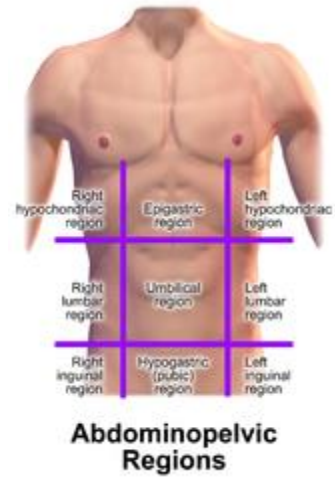
Anatomical Landmarks (Posterior View)

Landmarks of surface anatomy, posterior view.



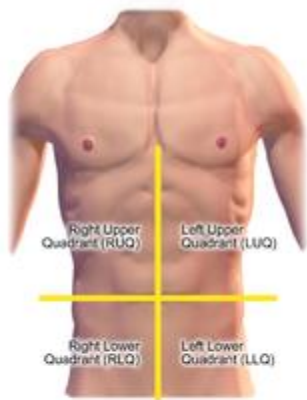
Directional References

Anatomical terms of location.



Abdominopelvic Regions

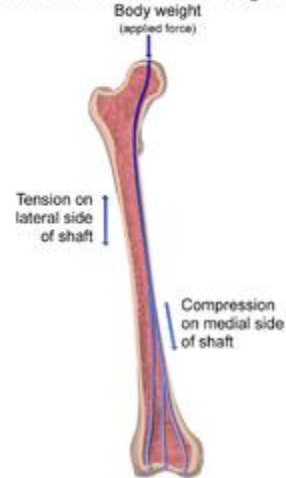
9-region scheme of the abdomen.



Abdominopelvic Quadrants

Abdominal quadrants

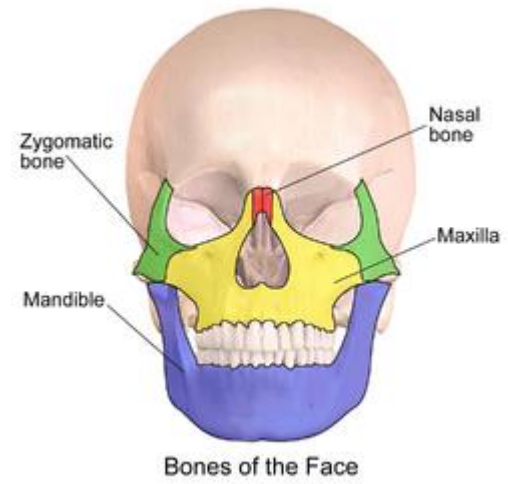
Distribution of Forces on a Long Bone



Distribution forces of the femur.



Skeletal anatomys of the hand.



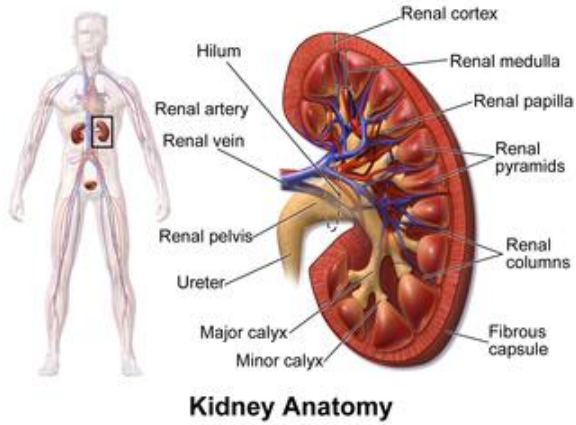
Facial bones



Skeletal anatomys of the foot.



Nail.



Kidney anatomy.



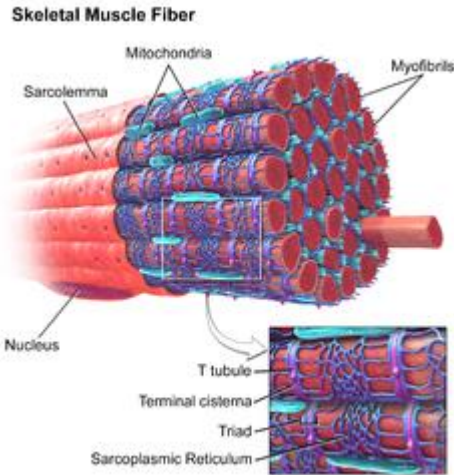
Anatomy of the knee, viewed from front.



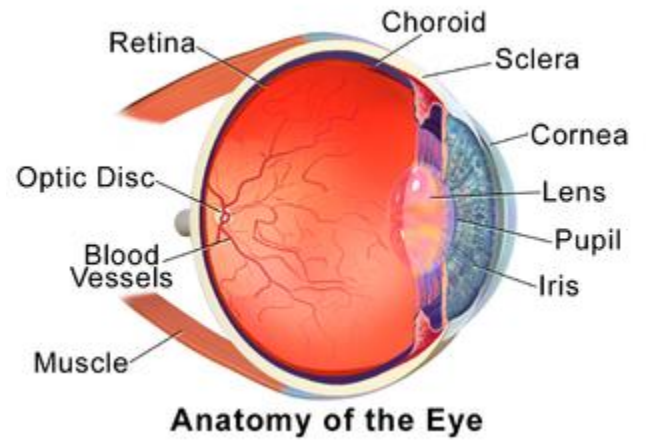
Anatomy of the knee, viewed from the side.



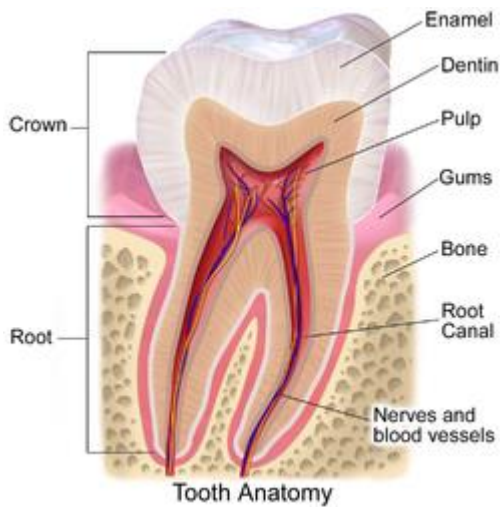
Bones of the leg.



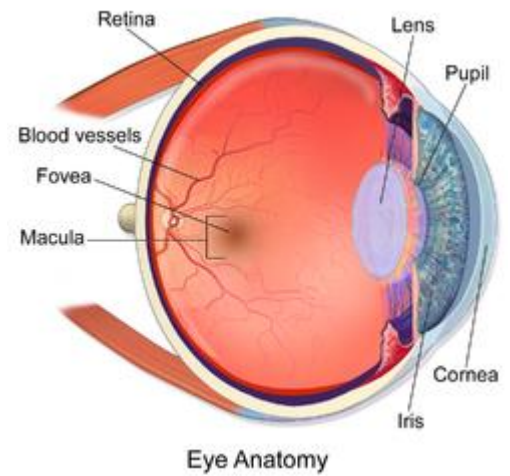
Skeletal muscle.



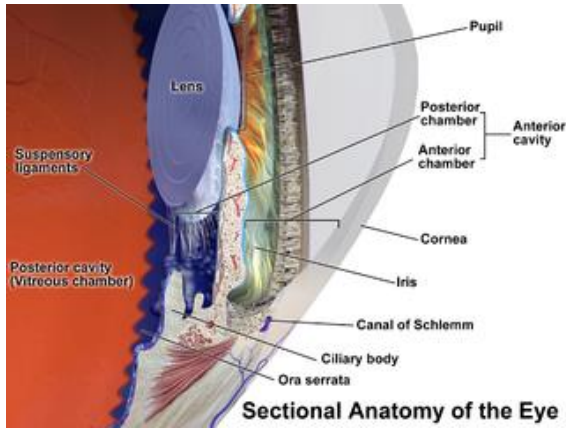
Eye.



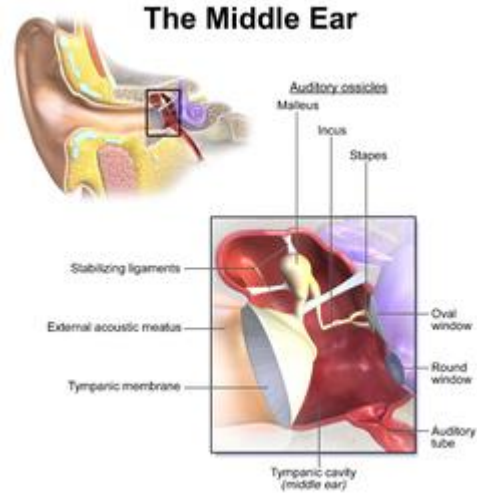
Tooth anatomy



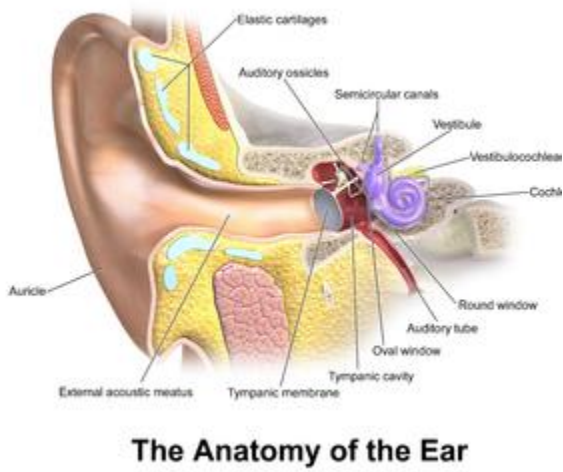
Eye.



Anterior eye.



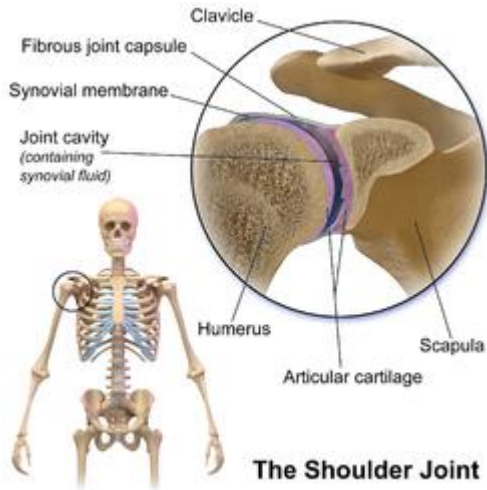
Middle ear.



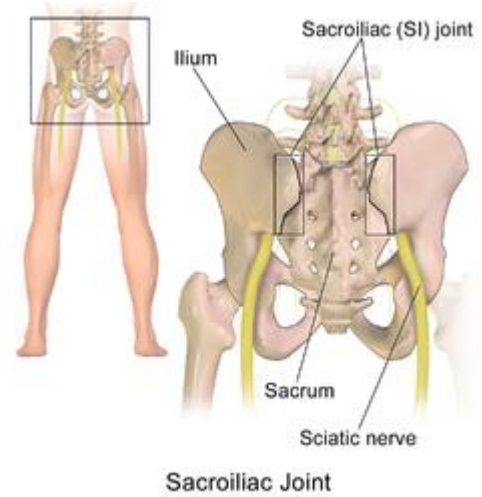
Ear.



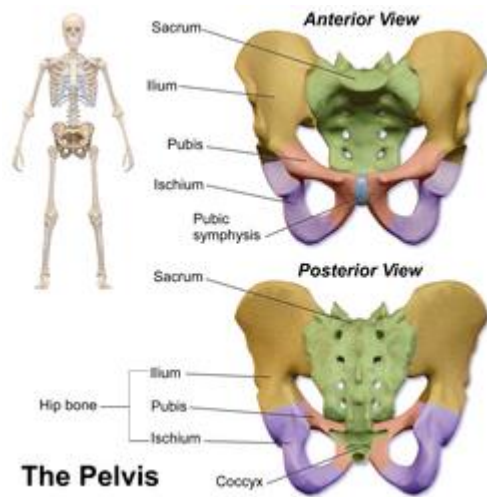
Inner ear.



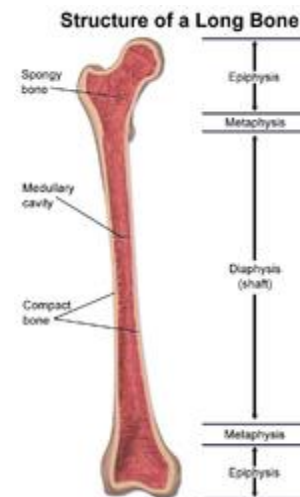
Shoulder joint.



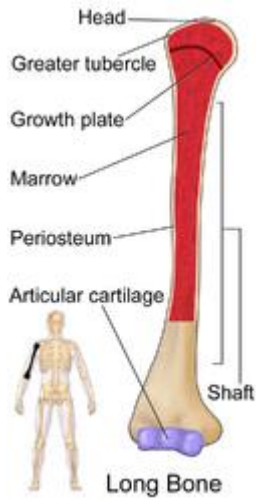
Sacroiliac joint.



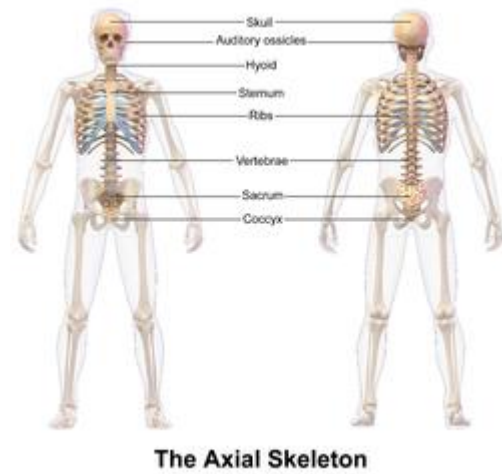
Pelvis.



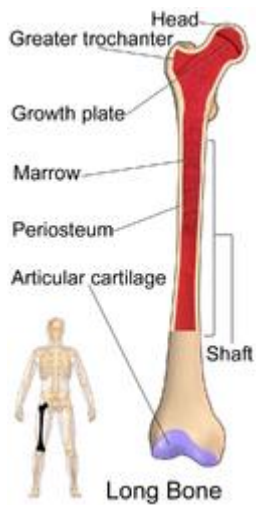
Anatomy of a long bone.



Humerus.



Axial skeleton.



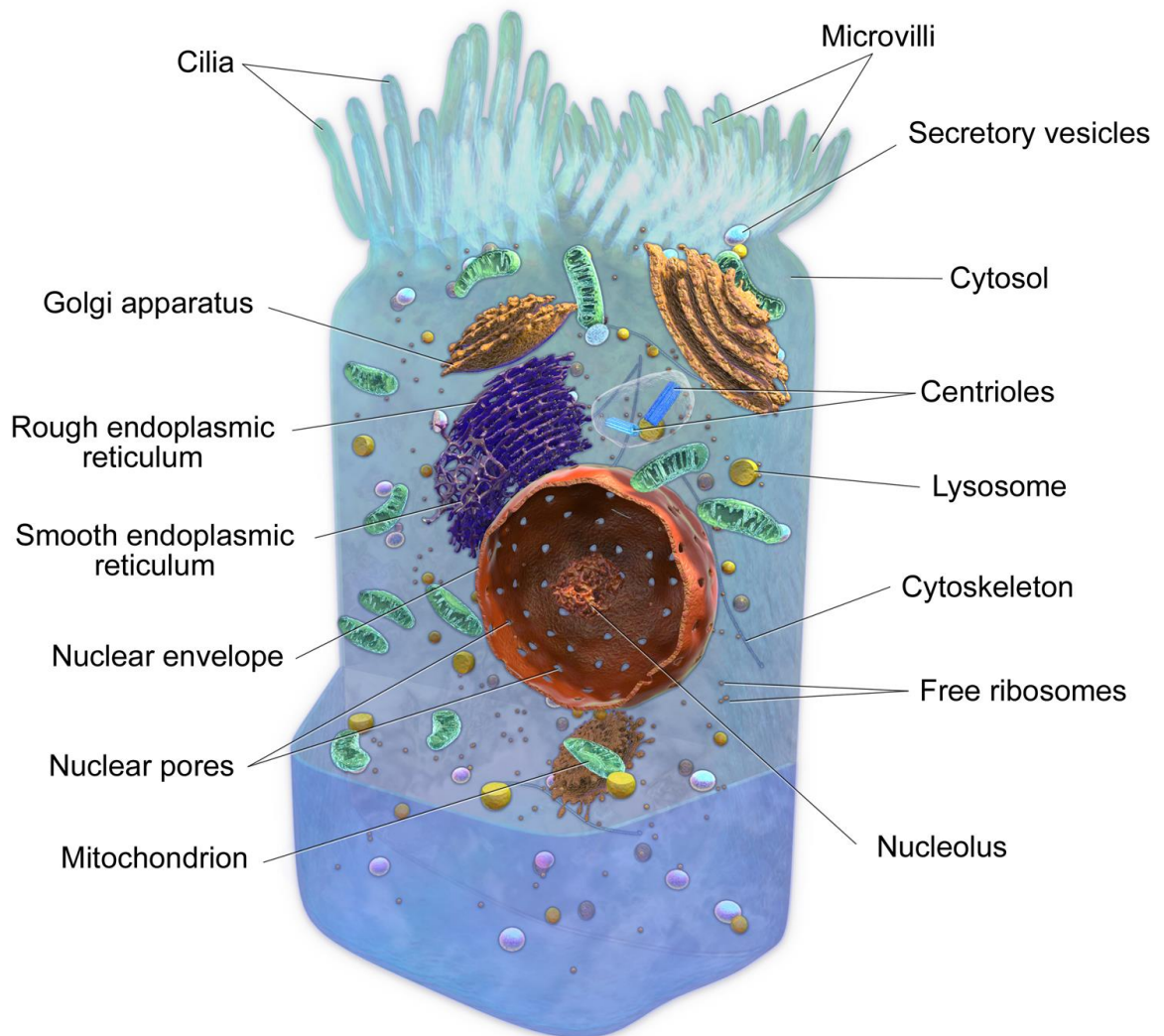
Femur.



Appendicular skeleton.

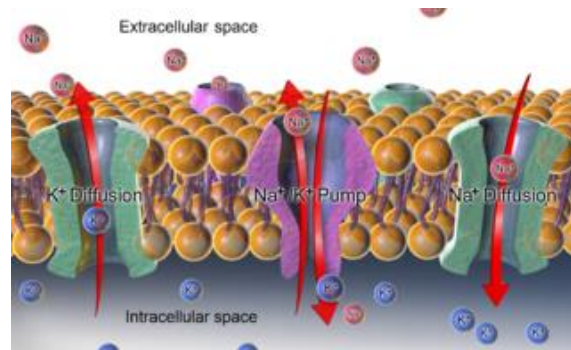


Cell biology

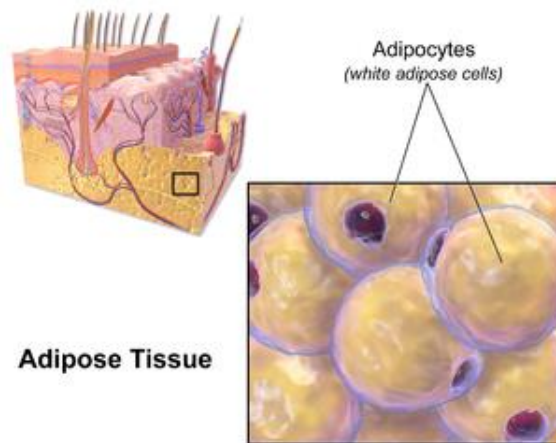


Anatomy of a Cell

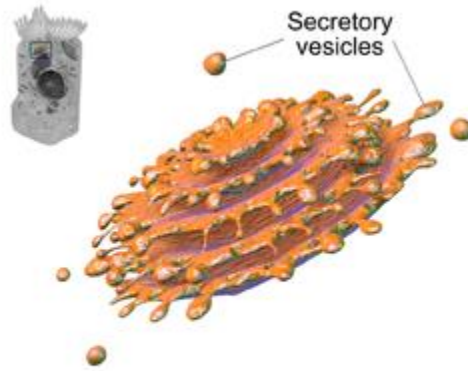
Cell anatomy



Sodium-potassium pump and resting potential,

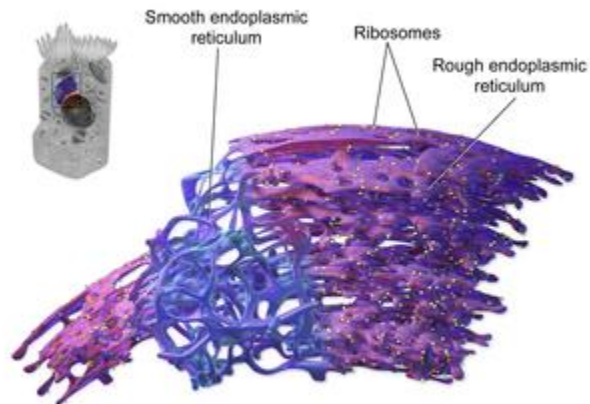


Adipose tissue.



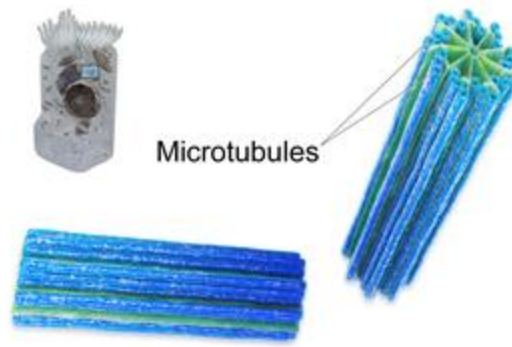
Golgi Apparatus

Golgi apparatus.



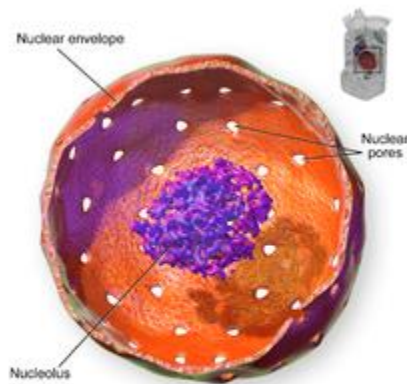
Endoplasmic Reticulum

Endoplasmic reticulum.



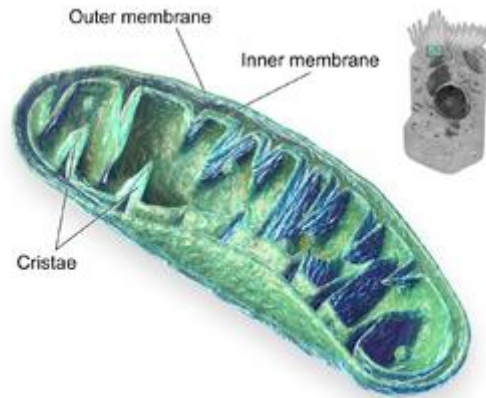
Centrioles

Centrioles.



Nucleus

Cell nucleus.

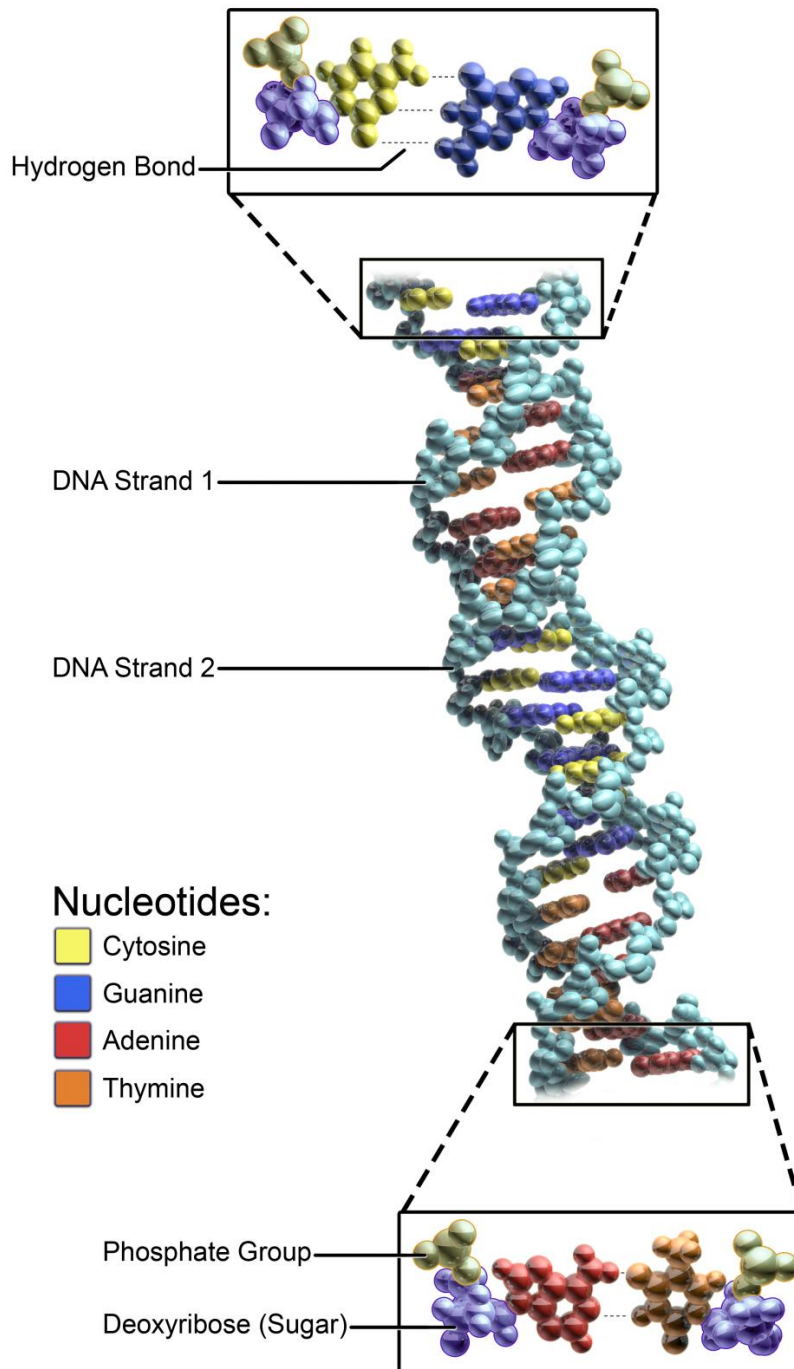


Mitochondria

Mitochondria.

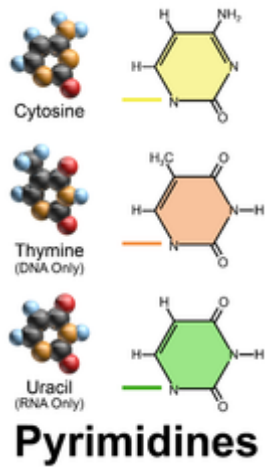


Biochemistry



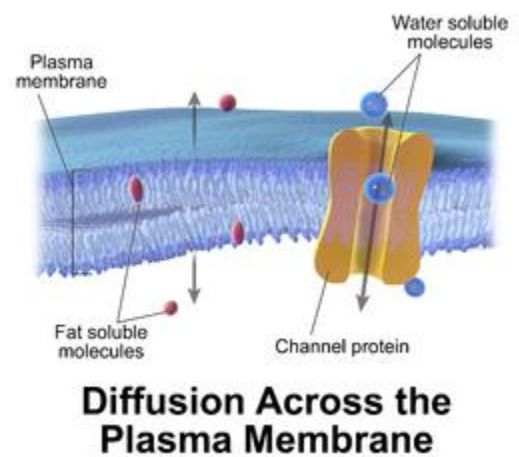
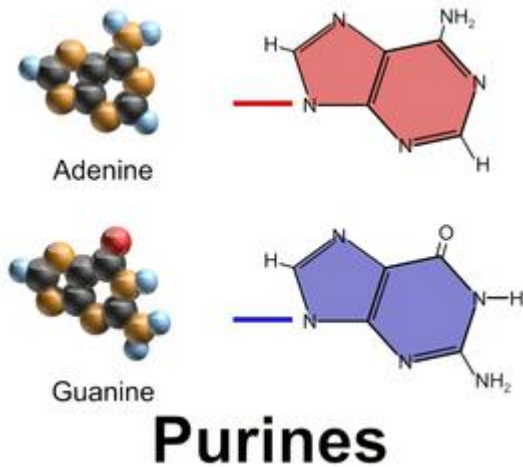
DNA Molecule

DNA molecule.



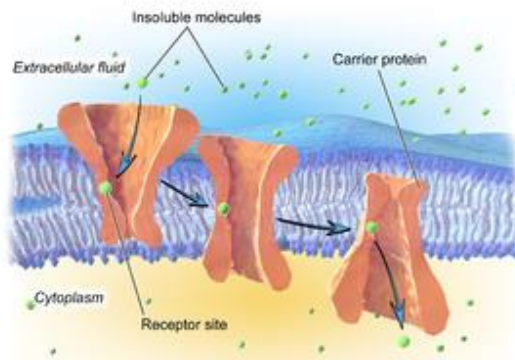
Pyrimidine-derived nucleobases.

DNA molecule.



Purine-derived nucleobases.

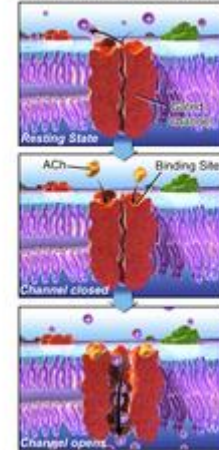
Passive transport by diffusion across a cell membrane.



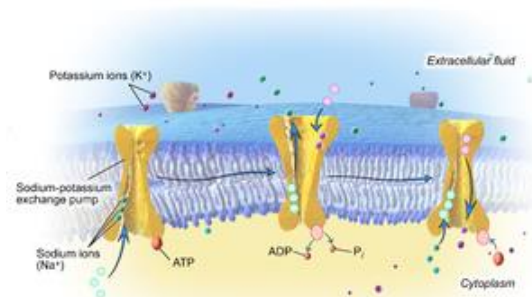
Facilitated Diffusion

Facilitated diffusion.

Chemically Gated Channel

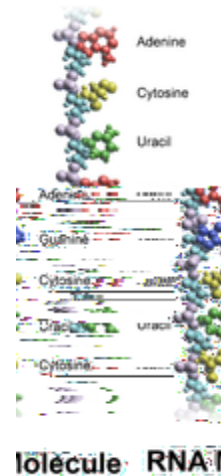


Ligand-gated ion channel.



The Sodium-Potassium Exchange Pump

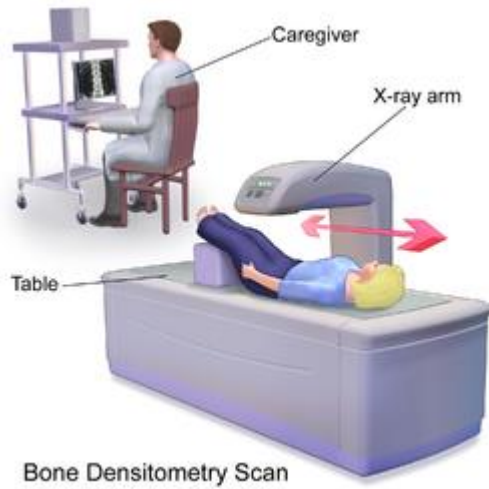
Sodium-potassium pump.



RNA molecule.

Interventions

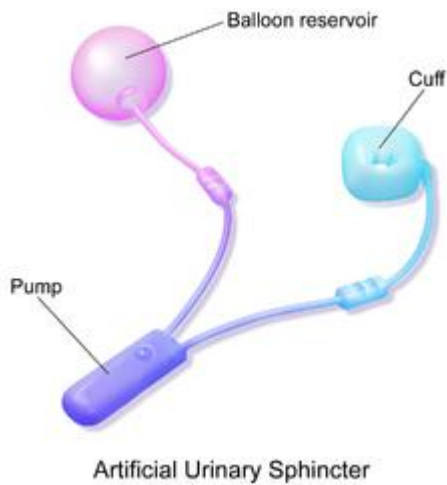
Treatments, diagnostic tools and other interventions not already primarily belong to any of the sections above.



Bone densitometry scan.



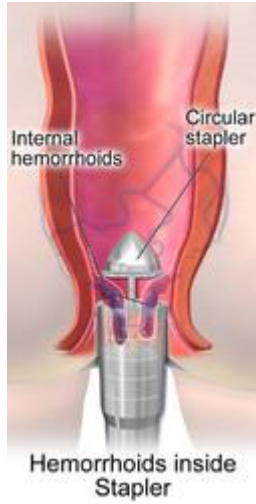
Ankle stirrup splint.



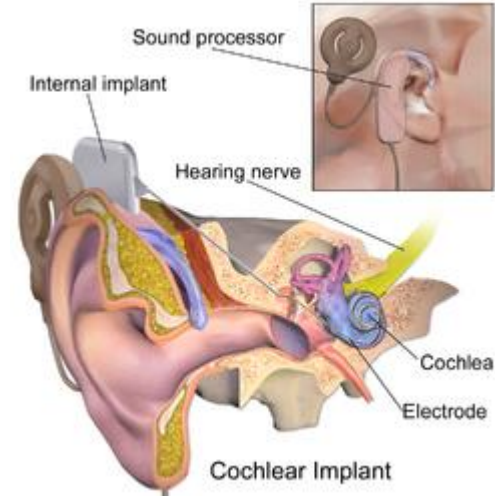
Artificial urinary sphincter.



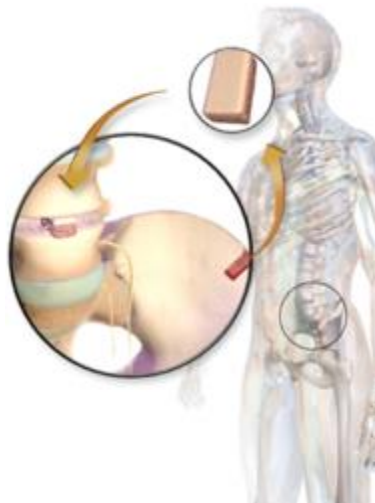
Abdominal paracentesis.



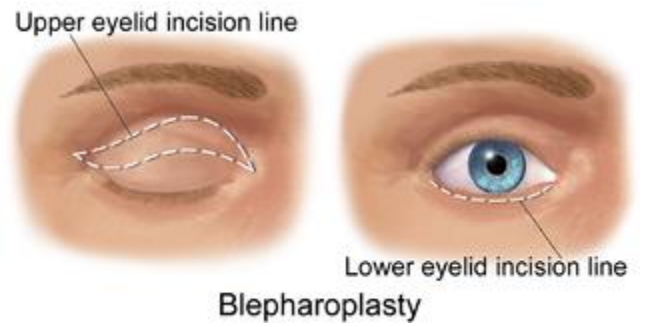
Stapled hemorrhoidopexy.



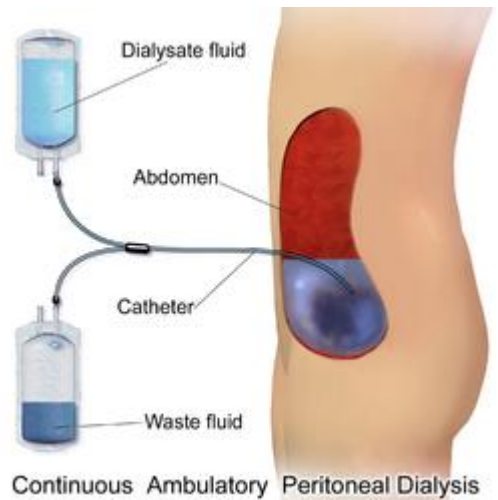
Cochlear implant.



Bone grafting using an autograft.



Blepharoplasty.



Continuous ambulatory peritoneal dialysis.