

Pineapple Solar Salsa

INGREDIENTS

- 6 Roma tomatoes
- 2 - 3 habanero peppers
- 1 - 2 jalapeño peppers
- 1 cup of pineapple
- ½ of a red onion
- 3 cloves garlic
- 1 tablespoon of sea salt
- 2 tablespoon of lime juice
- Cooking oil
- Cilantro to taste

Note: Adjust the heat level of the recipe by using fewer peppers, deseeding the peppers, or substituting sweet peppers for the habaneros.

DIRECTIONS

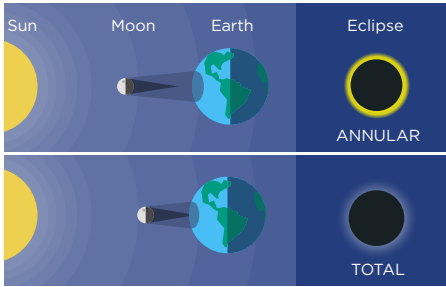
1. Slice the tomatoes, jalapenos, habaneros, and onion in half. Lightly coat in oil. Roast in an oven at 450 degrees for 15 minutes or air fry at 400 degrees for ten minutes.
2. Chop the pineapple into small chunks. Set the fruit aside.
3. Finely dice garlic and add it to a mixing bowl with lime juice, and salt. Stir well until the salt dissolves.
4. When the vegetables are done roasting let them cool slightly and then dice by hand or blend in a food processor to your preferred texture. Blend in the garlic mixture.
5. Combine with the pineapple and chill for at least 4 hours before serving.



ANNULAR SOLAR ECLIPSE

October 14, 2023

An annular solar eclipse happens when the Moon passes between the Sun and Earth while it is at its farthest point from Earth. The word “annular” means ring shaped.



TOTAL SOLAR ECLIPSE

April 8, 2024

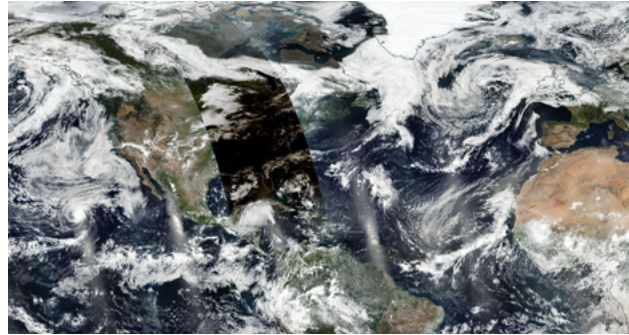
A total solar eclipse happens when a New Moon passes between the Sun and Earth, totally blocking the face of the Sun.

For the first time in almost 100 years on August 21, 2017 a total solar eclipse passed over the contiguous U.S. from the Pacific to the Atlantic. JPSS satellites flew over the path of totality as it crossed the Southeastern United States.



JPSS satellites travel in a polar orbit as the Earth rotates underneath.

JPSS captures the Earth in partial shadow during the 2017 solar eclipse.



For more educational materials visit:
www.nesdis.noaa.gov/jpss-education



What happens on Earth during an eclipse?

Lower Temperatures

The temperature dropped by an average of 12 degrees Fahrenheit during the eclipse.

Wind Speed Dropped

Wind speed dropped by about 2 mph.

Fewer Clouds

As a result of the lower temperatures clouds dissipated in the Southern states.

Higher Humidity

Researchers observed a 20% increase in relative humidity especially in the Great Plains and the American Southwest.

The Joint Polar Satellite System (JPSS) is a collaborative program between the National Oceanic and Atmospheric Administration (NOAA) and its acquisition agent, the National Aeronautics and Space Administration (NASA).

f Facebook.com/JPSS.Program
@JPSSProgram

