

Improving Regional PCE Estimates Using Credit Card Transaction Data

Abe Dunn
Ledia Guci
Mahsa Gholizadeh
Bryn Whitmire

June 10th 2016

Exploratory work with First Data/Palantir

Data and coverage

Aggregate Market Data

- ~50% of all U.S. Credit Card transaction spend
- Point of Sale (POS) data from 4.5MM+ U.S. merchant locations
- 600+ merchant categories in our data set
- 58B transactions annually
- \$1.6 Trillion spend, 10% of GDP
- All card-types, all banks, all networks, all 50 states, all customer segments, all merchant sizes
- 800M+ cardholders, 100% transactions from each merchant

This pilot uses restricted data that includes:

- National estimates on retail
- Flow of spending across geography by establishments and consumer location

Palantir/FirstData: Retail Sales



DEPARTMENT OF
COMMERCE
Timeseries Analysis Tool

Growth Rate since Oct 2012 ▼ Time Series ▼ Monthly ▼ [Add Annotation](#) [Save to Foundry](#) [Contact Us](#)

Chart Set 0 Set 1

+

Series: FD Constant Merchants ▼

Geographic Level: National ▼

Region: National ×

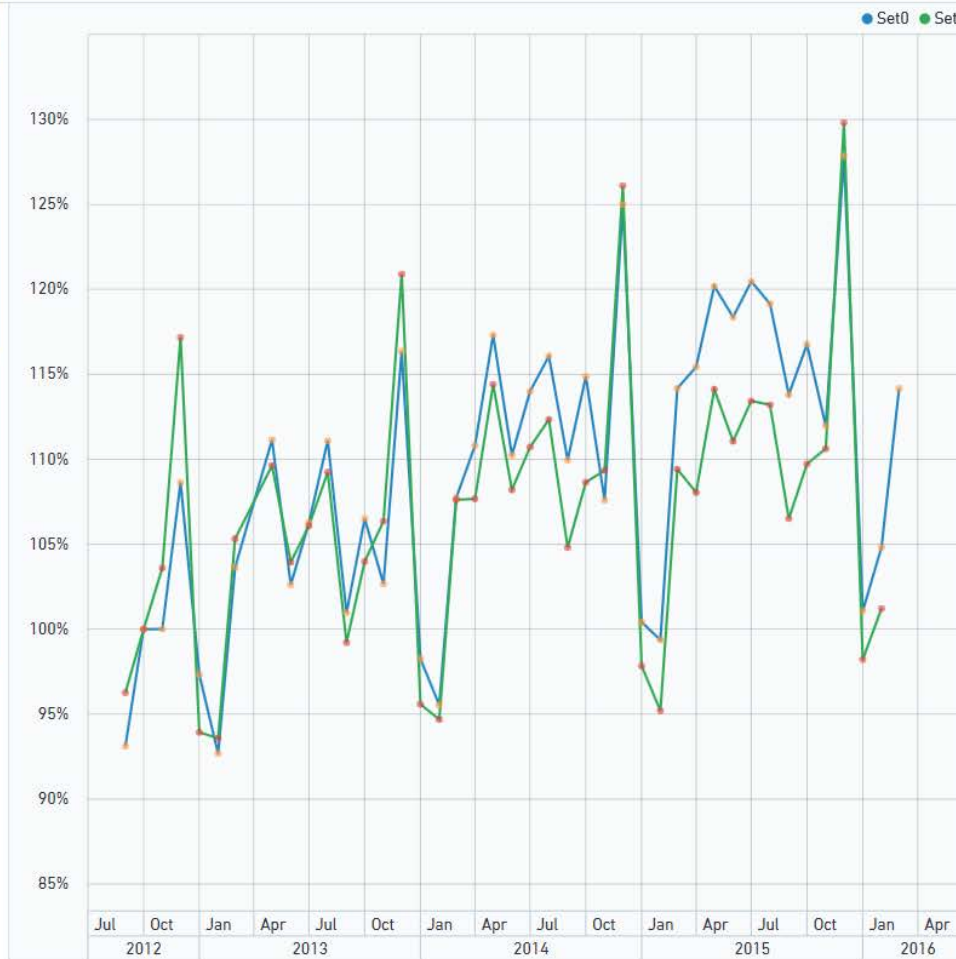
Industry: Retail Trade ×

Series: MRTS ▼

Geographic Level: National ▼

Region: National ×

Industry: 44-45: Retail Trade ×



STATISTICS

| | Set0 | Set1 |
|-------|------|------|
| Count | 42 | 41 |
| Std | 0.09 | 0.08 |
| Min | 0.93 | 0.94 |
| Max | 1.28 | 1.3 |
| Mean | 1.09 | 1.07 |
| 25% | 1.01 | 1.01 |
| 50% | 1.1 | 1.08 |
| 75% | 1.15 | 1.11 |

CORRELATION

| Set0 | Set1 | Correlation |
|------|------|-------------|
| Set0 | Set1 | 0.905 |

Palantir/FirstData - 448: Clothing Stores



DEPARTMENT OF
COMMERCE

Timeseries Analysis Tool

Growth Rate since Oct 2012

Time Series

Monthly

Add Annotation

Save to Foundry

Contact Us

Chart

Set 0

Set 1

Series: FD Constant Merchants

Geographic Level: National

Region: National

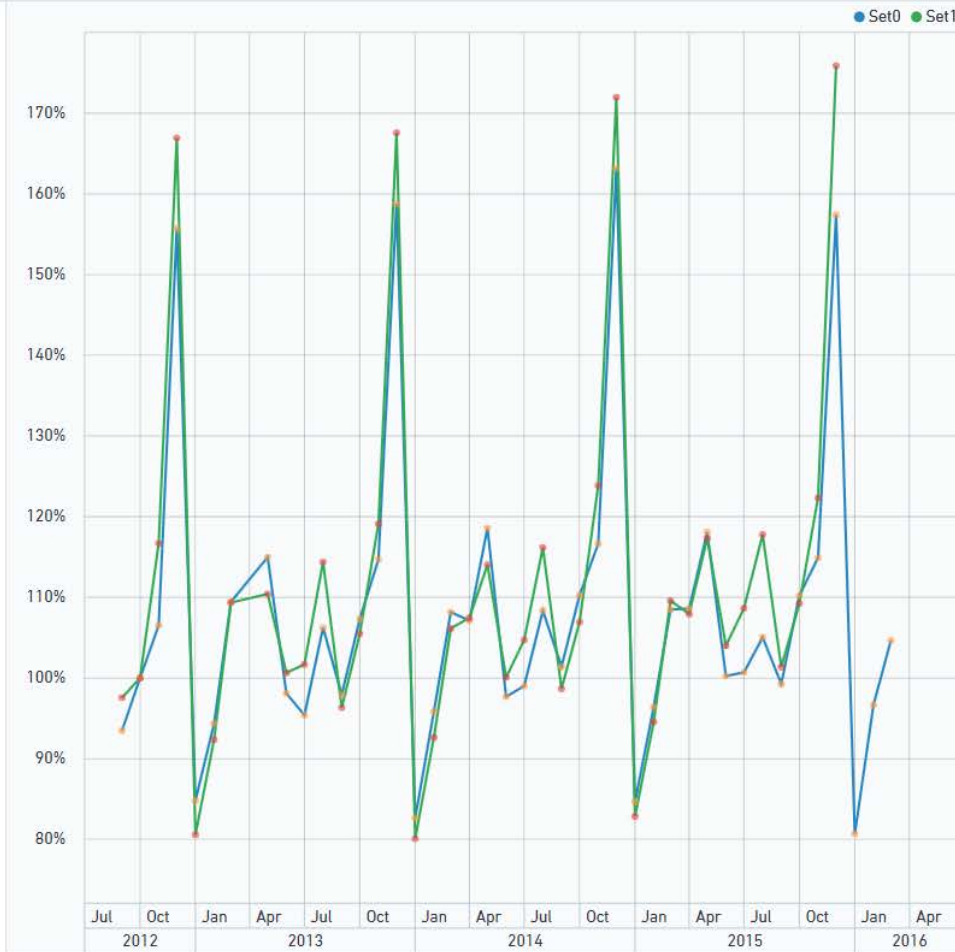
Industry: 448: Clothing and Clothing Accessories Stores

Series: MRTS

Geographic Level: National

Region: National

Industry: 448: Clothing and Clothing Access. Stores



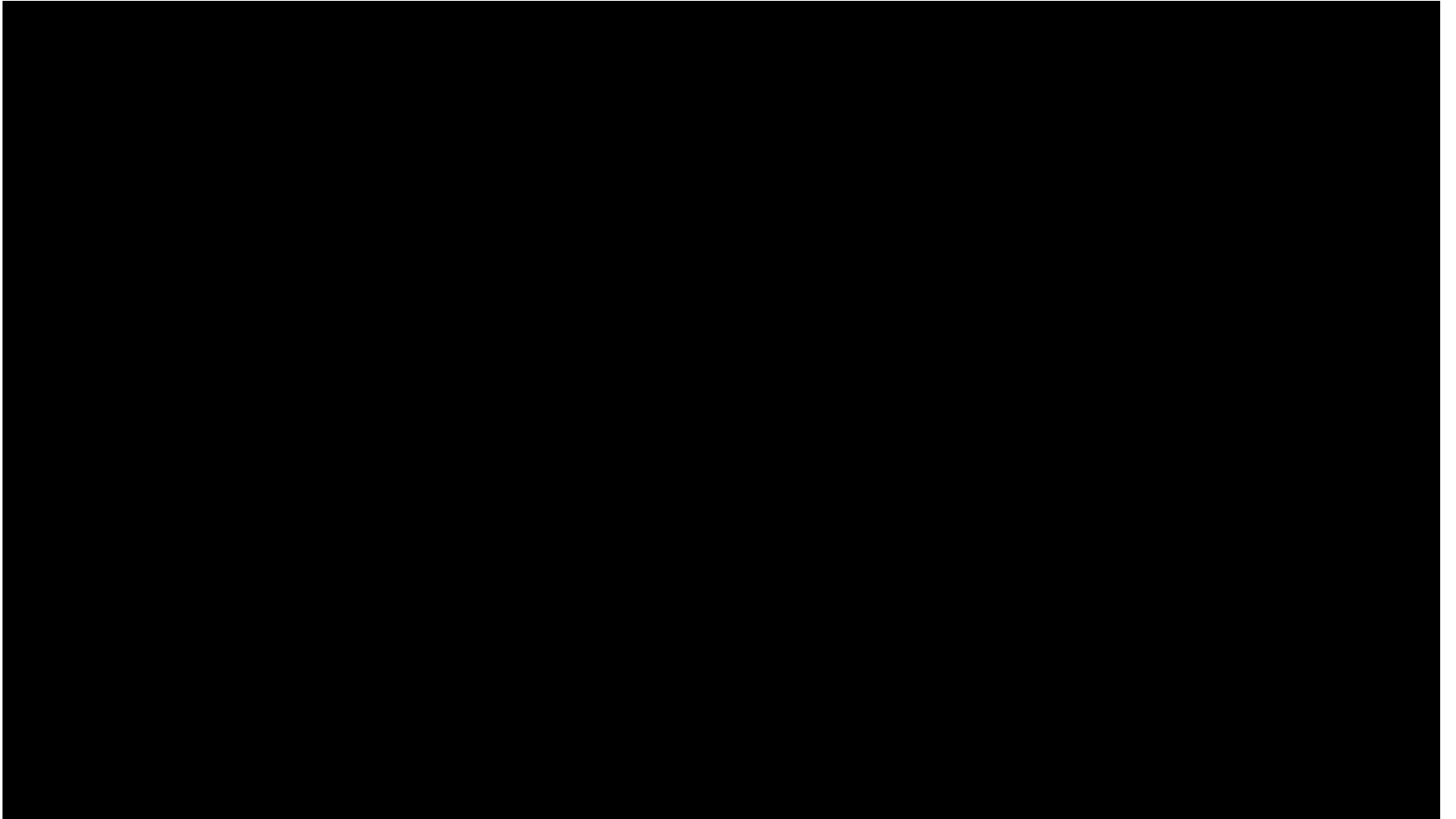
STATISTICS

| | Set0 | Set1 |
|-------|------|------|
| Count | 42 | 39 |
| Std | 0.19 | 0.23 |
| Min | 0.81 | 0.8 |
| Max | 1.63 | 1.76 |
| Mean | 1.08 | 1.12 |
| 25% | 0.98 | 1 |
| 50% | 1.06 | 1.07 |
| 75% | 1.1 | 1.16 |

CORRELATION

| Set0 | Set1 | Correlation |
|------|------|-------------|
| Set0 | Set1 | 0.979 |

Help to improve state level estimates of Personal Consumption Expenditures (PCE), and may help generate MSA level estimates



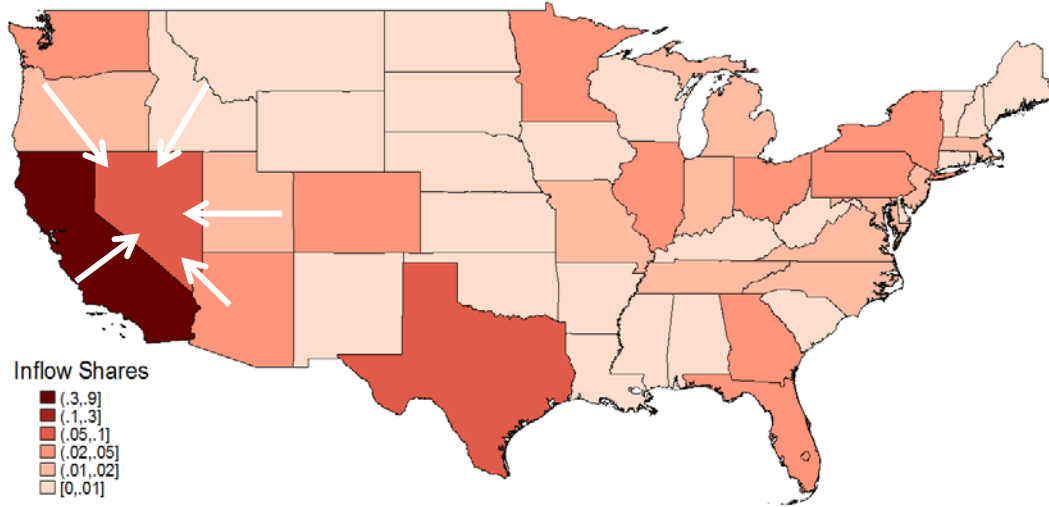
Adjusting Establishment Estimates from Census to Construct Regional PCE Statistics

- Current process
 - Criteria for adjustment
 - Sufficient evidence of out-of-state spending
 - Economic reason for adjustment
 - A good category match available in consumer expenditure survey data
 - Method
 - Adjust Census-based share with survey-based share
 - Rescale to national accounts totals
- First Data spending flows allows for a new approach

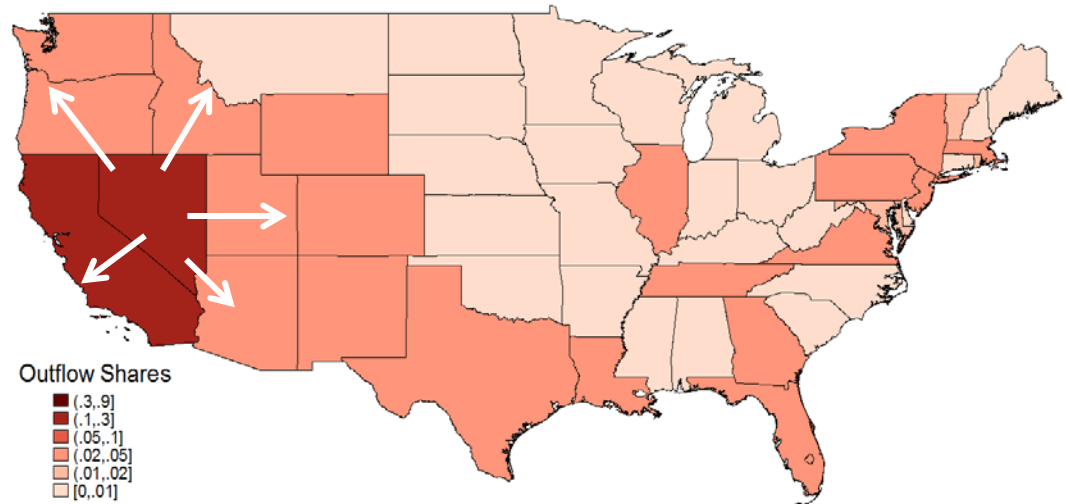
New Opportunity: Flows from First Data

Accommodation flows (NAICS 721)

To NV



From NV



Spending Flows for PCE by State

- Allocate back spending that occurs within a state by residents of other states
- Example: 30.7% of accommodation spending that occurs in NV needs to be allocated back to CA

| | Accommodations (NAICS 721) | | | Clothing (NAICS 448) | | | Grocery stores (NAICS 445) | | |
|------------|----------------------------|------------|------------|----------------------|------------|------------|----------------------------|------------|------------|
| | Spending state | | | Spending state | | | Spending state | | |
| | DC | HI | NV | DC | HI | NV | DC | HI | NV |
| Home state | CA (12.4%) | CA (34.5%) | CA (30.7%) | DC (39.4%) | HI (48.9%) | NV (31.8%) | DC (64.2%) | HI (72.3%) | NV (85.2%) |
| | DC (11.4%) | HI (12.2%) | TX (6.8%) | MD (17.5%) | CA (19.6%) | CA (20.5%) | MD (13.4%) | CA (9.7%) | CA (5.1%) |
| | NY (11.3%) | WA (6.7%) | NV (5.9%) | VA (15.3%) | WA (3.6%) | TX (7.5%) | VA (7.2%) | WA (2.8%) | AZ (0.8%) |
| | VA (6.0%) | TX (5.4%) | FL (4.5%) | NY (4.1%) | TX (3.5%) | FL (3.8%) | NY (2.1%) | TX (1.3%) | TX (0.8%) |
| | FL (5.0%) | NY (3.6%) | AZ (4.2%) | CA (3.5%) | NY (2.0%) | NY (3.0%) | CA (2.0%) | CO (1.1%) | FL (0.6%) |

Spending Flows for PCE by State

Opportunities

- Flow shares can be readily incorporated and simplify the current methodology
- Spending and consumption flows across areas provide a unique view of geography of consumption

Considerations

- Varying data quality and coverage by industry and by geography
- Imputation of consumer location

Consumption Flows and State Level PCE Estimates

Preliminary Estimates

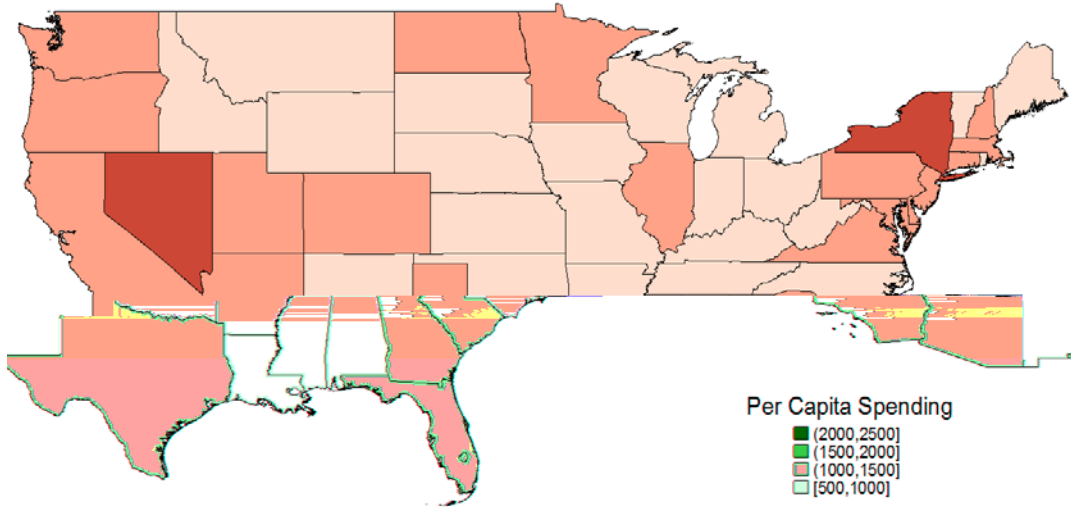
Clothing and Footwear, 2012

| Initial estimates | | Difference from U.S. Value | Per Dollar of Disposable Income | Difference from U.S. Value |
|-------------------|------------|----------------------------|---------------------------------|----------------------------|
| Geography | Per Capita | | | |
| United States | \$1,128 | 0.0% | 0.029 | 0.0% |
| Illinois | \$1,154 | 2.3% | 0.028 | -0.5% |
| Hawaii | \$1,813 | 60.8% | 0.045 | 57.0% |
| Nevada | \$1,796 | 59.3% | 0.050 | 75.4% |

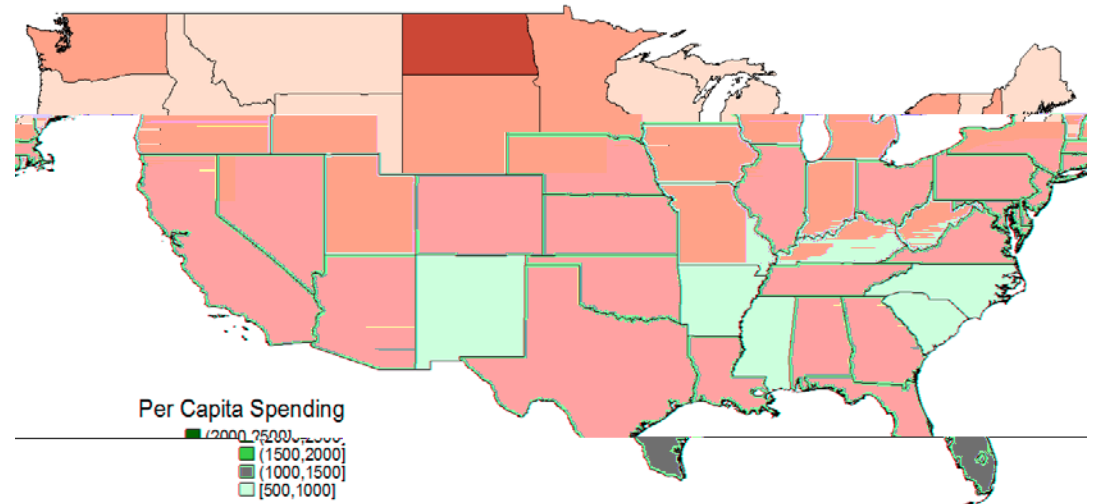
| Incorporating FD flows | | Difference from U.S. Value | Per Dollar of Disposable Income | Difference from U.S. Value |
|------------------------|------------|----------------------------|---------------------------------|----------------------------|
| Geography | Per Capita | | | |
| United States | \$1,128 | 0.0% | 0.029 | 0.0% |
| Illinois | \$1,149 | 1.8% | 0.028 | -0.9% |
| Hawaii | \$1,339 | 18.7% | 0.033 | 15.9% |
| Nevada | \$1,071 | -5.1% | 0.030 | 4.5% |

Clothing and Footwear, 2012

Initial estimates



Incorporating FD flows



Preliminary Estimates

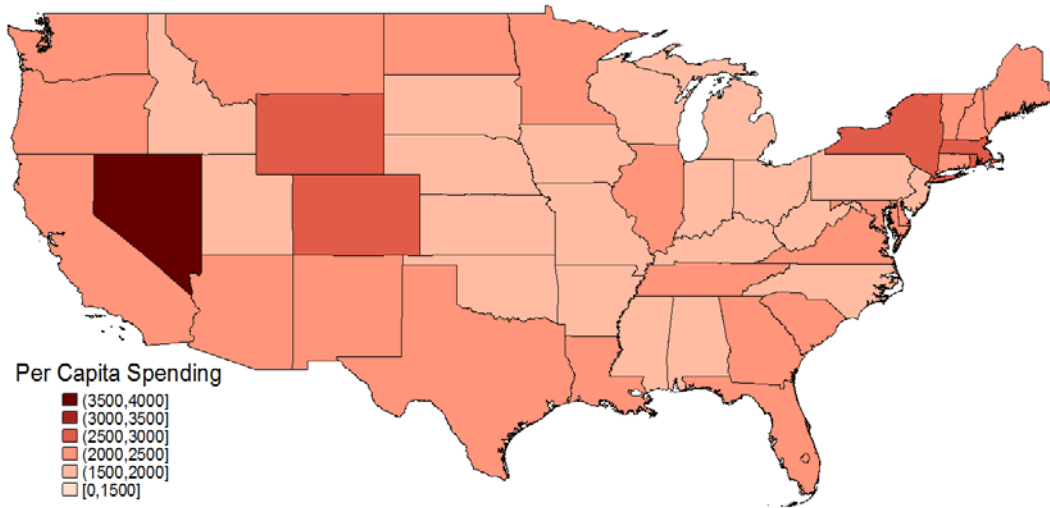
Food Services and Accommodations, 2012

| Initial estimates | | Difference from U.S. Value | Per Dollar of Disposable Income | Difference from U.S. Value |
|-------------------|------------|----------------------------|---------------------------------|----------------------------|
| Geography | Per Capita | | | |
| United States | \$2,181 | 0.0% | 0.055 | 0.0% |
| Illinois | \$2,193 | 0.6% | 0.054 | -2.2% |
| Hawaii | \$5,807 | 166.2% | 0.144 | 159.9% |
| Nevada | \$3,992 | 83.0% | 0.111 | 101.5% |

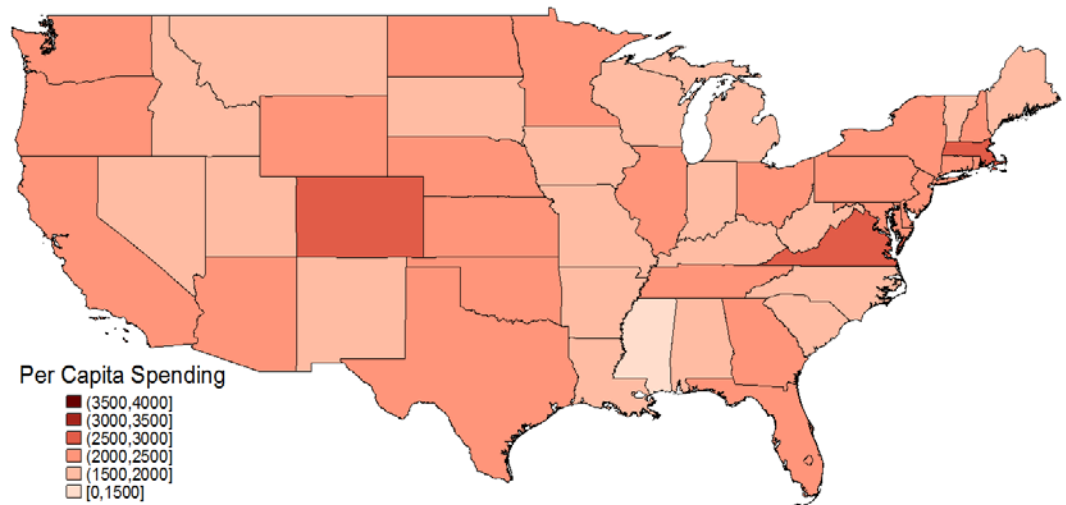
| Incorporating FD flows | | Difference from U.S. Value | Per Dollar of Disposable Income | Difference from U.S. Value |
|------------------------|------------|----------------------------|---------------------------------|----------------------------|
| Geography | Per Capita | | | |
| United States | \$2,181 | 0.0% | 0.055 | 0.0% |
| Illinois | \$2,359 | 8.2% | 0.058 | 5.2% |
| Hawaii | \$2,763 | 26.7% | 0.068 | 23.7% |
| Nevada | \$1,578 | -27.7% | 0.044 | -20.3% |

Food Services and Accommodations, 2012

Initial estimates



Incorporating FD flows



Consumption Flows and MSA Level PCE Estimates

Preliminary Estimates

Clothing and Footwear, 2012

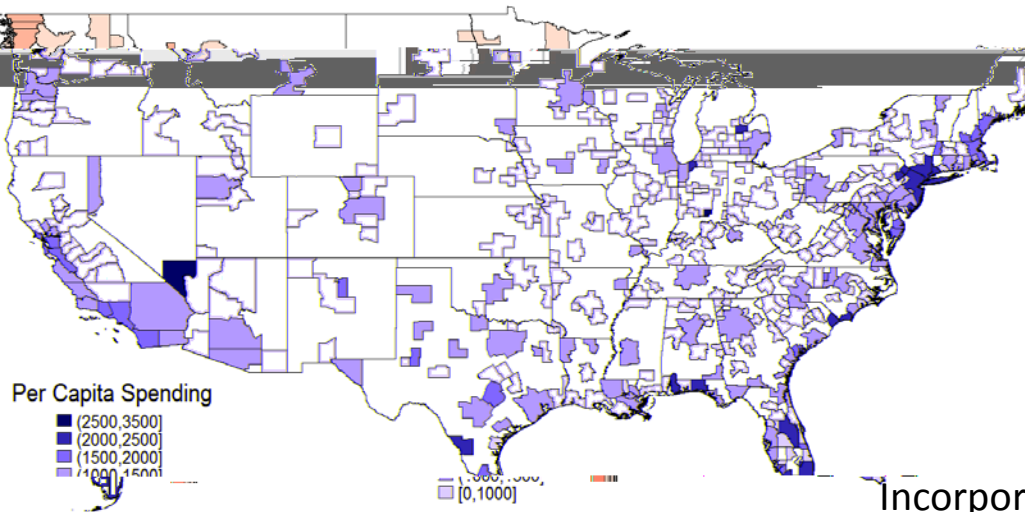
| Initial estimates | | | | |
|----------------------------------|------------|----------------------------|-------------------------------|----------------------------|
| Geography | Per Capita | Difference from U.S. Value | Per Dollar of Personal Income | Difference from U.S. Value |
| United States | \$1,128 | 0.0% | 0.026 | 0.0% |
| Kansas City, MO-KS | \$995 | -11.7% | 0.022 | -12.8% |
| Kahului-Wailuku-Lahaina, HI | \$2,683 | 137.9% | 0.070 | 175.3% |
| Las Vegas-Henderson-Paradise, NV | \$2,936 | 160.3% | 0.076 | 197.7% |

| Incorporating FD flows | | | | |
|----------------------------------|------------|----------------------------|-------------------------------|----------------------------|
| Geography | Per Capita | Difference from U.S. Value | Per Dollar of Personal Income | Difference from U.S. Value |
| United States | \$1,128 | 0.0% | 0.026 | 0.0% |
| Kansas City, MO-KS | \$1,002 | -11.1% | 0.022 | -12.2% |
| Kahului-Wailuku-Lahaina, HI | \$1,616 | 43.2% | 0.042 | 65.8% |
| Las Vegas-Henderson-Paradise, NV | \$1,749 | 55.1% | 0.045 | 77.3% |

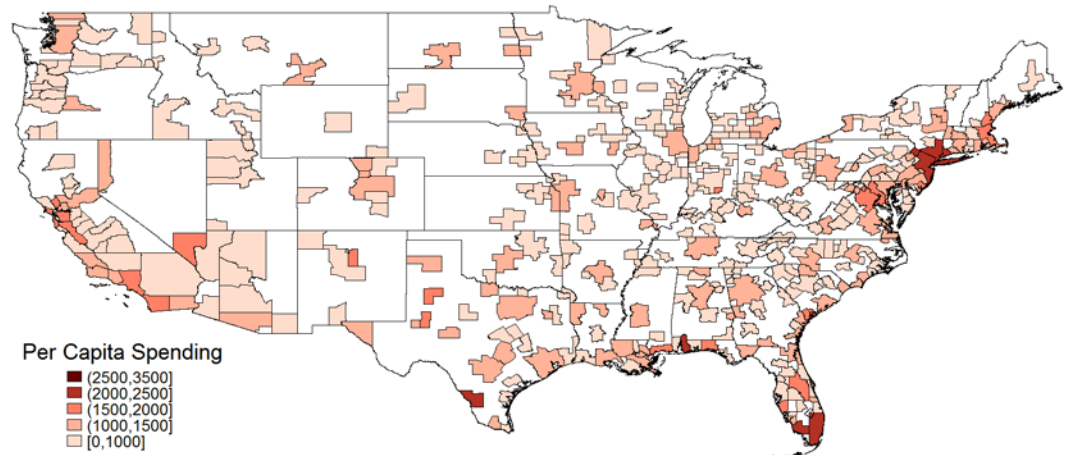
Clothing and Footwear, 2012

Initial estimates

Per Capita Spending



Incorporating FD flows



Preliminary Estimates

Food Services and Accommodations, 2012

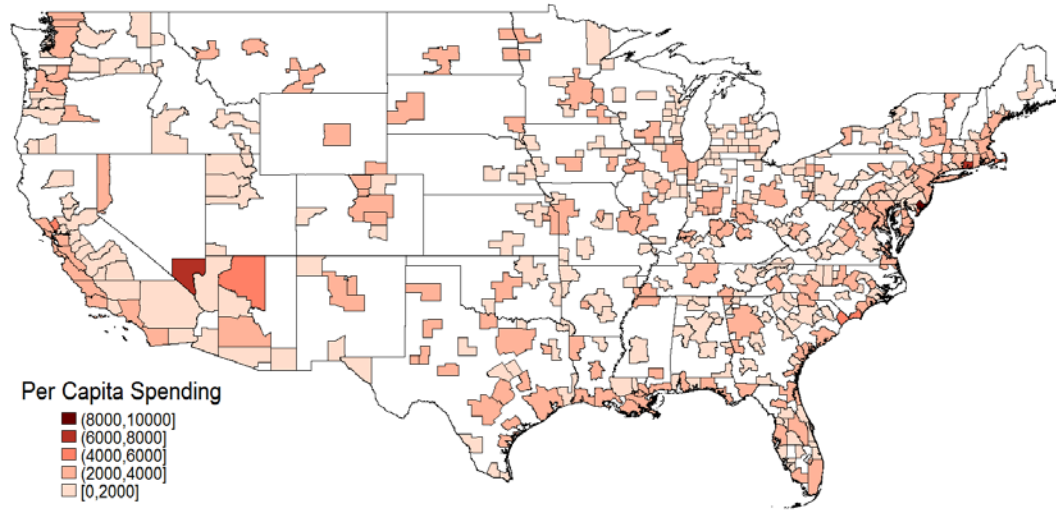
| Initial estimates | | Difference | Per Dollar of | Difference from |
|----------------------------------|------------|------------|---------------|-----------------|
| Geography | Per Capita | from U.S. | Personal | U.S. Value |
| | | Value | Income | |
| United States | \$2,181 | 0.0% | 0.049 | 0.0% |
| Kansas City, MO-KS | \$2,117 | -3.0% | 0.047 | -4.2% |
| Kahului-Wailuku-Lahaina, HI | \$9,597 | 340.0% | 0.251 | 409.3% |
| Las Vegas-Henderson-Paradise, NV | \$7,707 | 253.4% | 0.199 | 304.1% |

| Incorporating FD flows | | Difference | Per Dollar of | Difference from U.S. |
|----------------------------------|------------|------------|---------------|----------------------|
| Geography | Per Capita | from U.S. | Personal | Value |
| | | Value | Income | |
| United States | \$2,181 | 0.0% | 0.049 | 0.0% |
| Kansas City, MO-KS | \$2,231 | 2.3% | 0.050 | 1.0% |
| Kahului-Wailuku-Lahaina, HI | \$3,443 | 57.8% | 0.090 | 82.7% |
| Las Vegas-Henderson-Paradise, NV | \$2,832 | 29.8% | 0.073 | 48.5% |

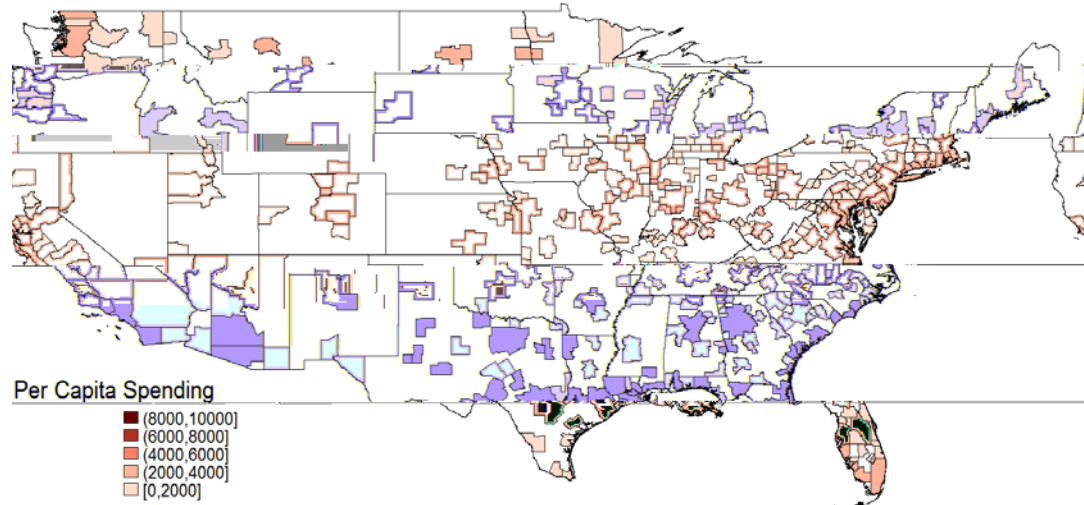
Food Services and Accommodations, 2012

Initial estimates

Per Capita Spending



Incorporating FD flows



Next Steps

- Continue working with data to refining adjustment for regional PCE.
- Refine the home location algorithm and further evaluate flow information.
- Investigate e-commerce data.