



Consumer Expenditure Surveys (CE) Redesign: Implications for National Economic Accounts

Clinton P. McCully

Federal Economic Statistics Advisory Committee Meeting

December 14, 2012

BEA Use of CE Data

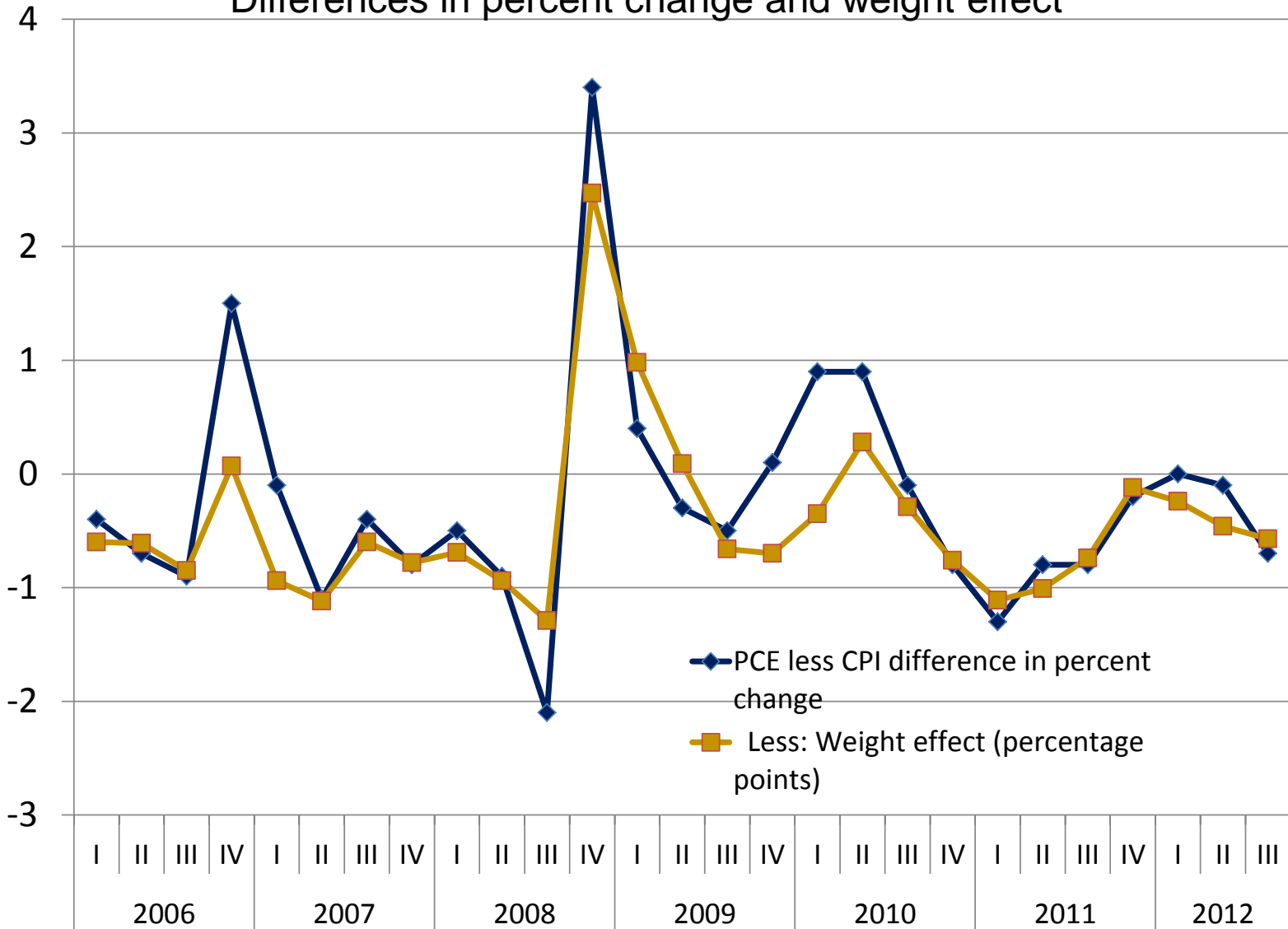
- Direct Uses
 - Personal consumption expenditures (PCE)
 - CE estimates used directly for some PCE transportation services categories
 - Tenant-occupied nonfarm rent
 - Renters' maintenance and repair expenditures
- CPI-PCE price index reconciliation
 - CPI weights based on CE vs. PCE weights
- Travel and Tourism Satellite Account
 - CE used to determine shares of PCE that are travel and tourism related

BEA Use of CE Data (cont.)

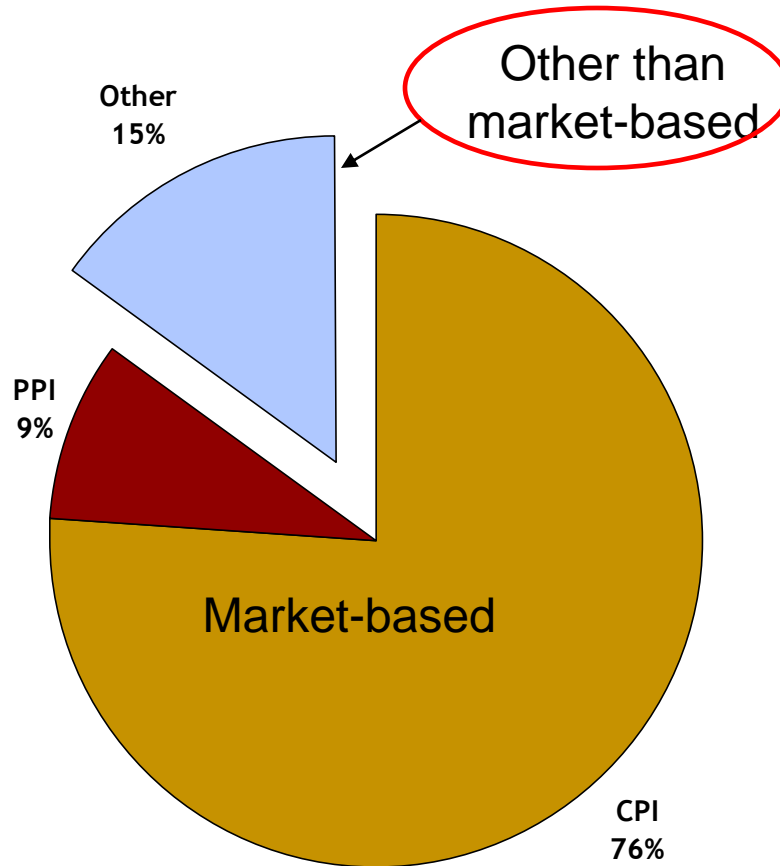
- Integrated micro-macro consumption estimates
 - Breakdowns
 - Household income
 - Household type
 - Main source of household income
 - CE expenditures matched and scaled
 - Scaling factors vary greatly, but some are quite sizable
 - Underreporting
 - Missing consumption of very high income households
 - PCE financial services—almost no matches

CPI vs. PCE Price Index

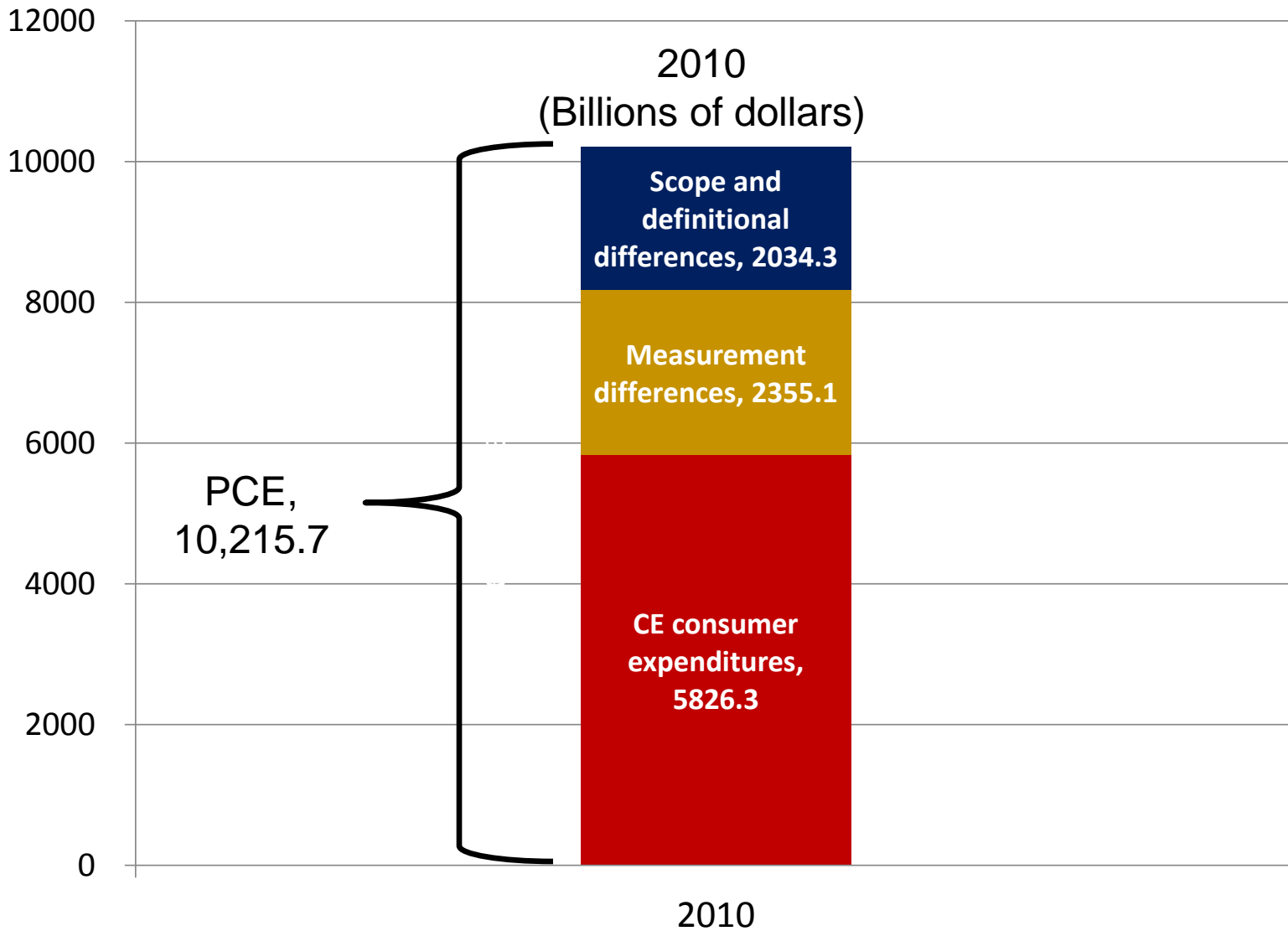
Differences in percent change and weight effect



Composition of the PCE Price Index



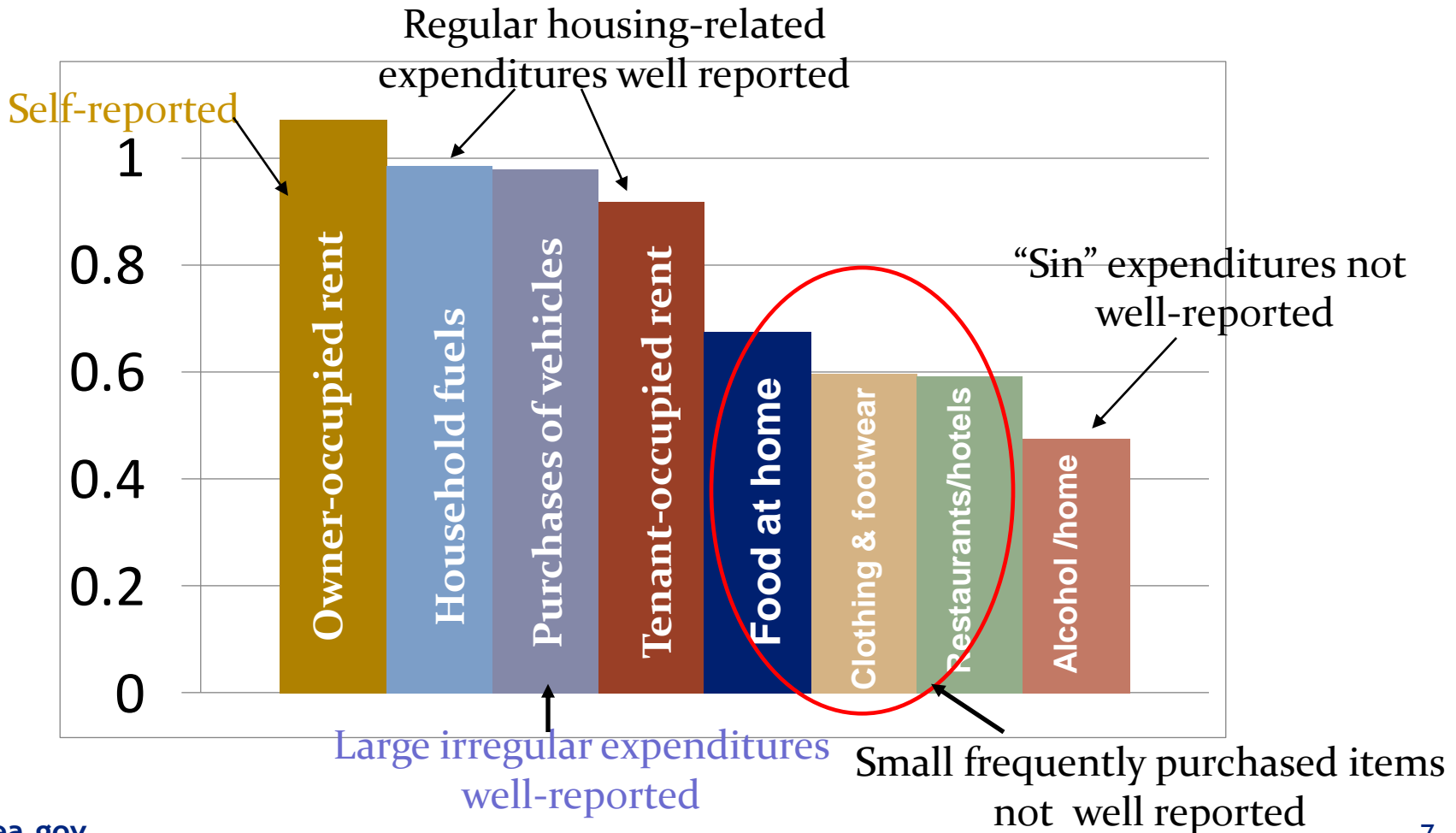
PCE & CE Consumer Expenditures



Consumption Coverage Ratios

2010

- Ratio of CES values to adjusted NIPA household consumption expenditures (HCE) for selected estimates



High Income Coverage

