

PORT MILWAUKEE OVERVIEW

Port Milwaukee History

Major milestones and highlights



- **1835** Port Milwaukee established as a Great Lakes Port



- **1913** Common Council approves acquisition of Jones Island by City of Milwaukee



- **1921** Railroad line established at Port Milwaukee



- **1970** Summerfest makes its home on Port property with long-term lease



- **2004** Lake Express establishes high-speed ferry service Milwaukee - Muskegon



- **2011** Port Milwaukee becomes Grantee to Foreign Trade Zone 41



- **2014** MS Hamburg offers modern day pleasure cruising



Port Milwaukee 1835



Established by State Statute 1921



Passengers on the SS Milwaukee Clipper ~1950

The Port Today

- ~2.5m+ metric tons cargo handled annually.
- 2nd largest port in the state of Wisconsin.
- Major port of call on Great Lakes cruise itineraries with international cruise lines including Pearl Seas and Viking Cruises.
- Continued investment in port infrastructure to support future growth with the aid of federal and state grants.

South Harbor Tract



North Harbor Tract



Commercial



Recreational



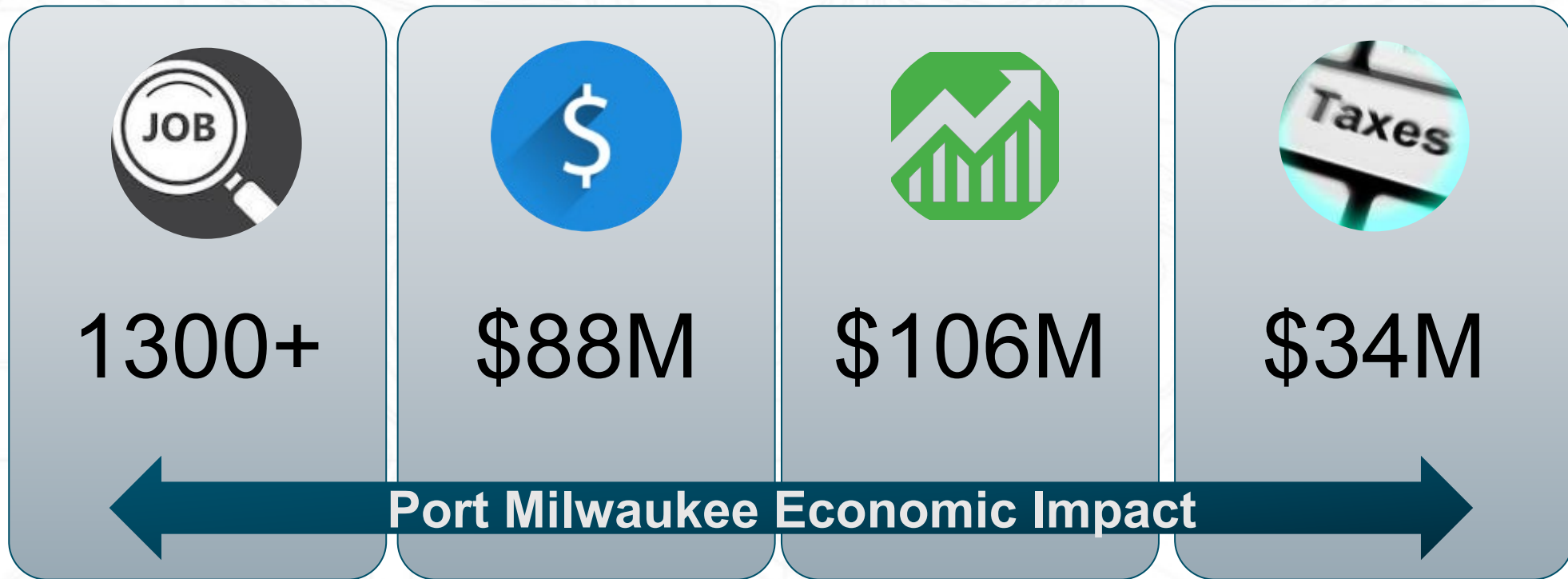
Recreational Venues



North Harbor Track



Port Milwaukee Economic Impact



Port Milwaukee Quick Facts

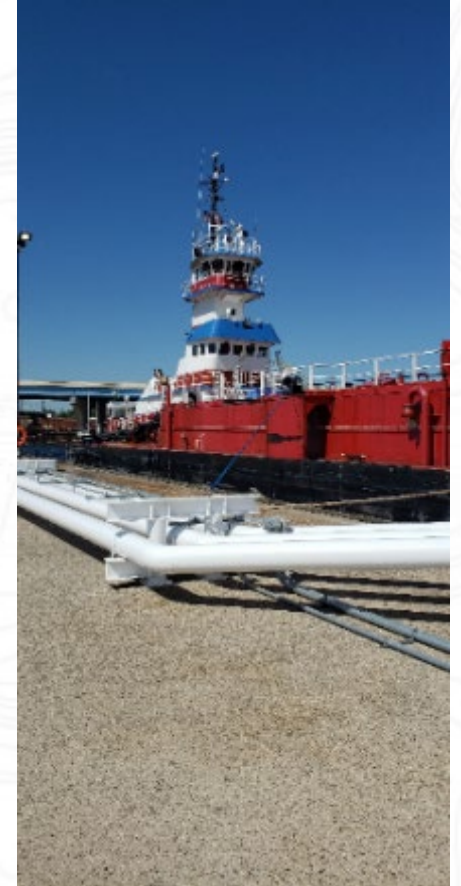
- 467 acres of land
 - North Harbor
 - South Harbor (Jones Island)
- Overseen by a 7 member Board of Harbor Commissioners
- Port staff of 21
- Landlord Port with 20+ tenants
- 6 Port owned cranes
 - Crawlers
 - 300 ton capacity
- Covered storage and laydown space
- Liquid cargo pier
- 2 Class I railroads
 - Canadian Pacific, Union Pacific
 - Own 14 miles of track



Types of Cargo Handled

- Project Cargo
- Breakbulk Cargo
- Dry Bulk
- Liquid Bulk

**No maritime containers*



Commodities Handled at the Port

- European Steel
- Agriculture
- Cement
- Limestone
- Lumber
- Mining equipment
- Construction equipment
- Brewery Tanks
- Salt



Milwaukee Harbor Total Tonnage

Description	2021	2020	Change	Percent
Dry Bulk	1,581,817	1,919,135	-337,318	-18%
Steel	169,748	182,955	-13,207	-7%
Gen. Cargo	4,065	396	3,669	926%
Liquid Cargo	49,343	45,714	3,629	8%
Total Municipal Port	1,804,973	2,148,200	-34,610	-16%
Total Private Dock	543,446	663,807	-120,361	-18%
OVERALL	2,348,418	2,812,008	-463,590	-16%

Year Round Availability

- “Lakers” deliver salt throughout the winter
- Rail deliveries of steel
- Salt & Milorganite bagging
- Winter fleet maintenance



Multimodal Connectivity

Convergence of all modes of transportation

- The **St. Lawrence Seaway** allows ships to transit between the Great Lakes and the Atlantic Ocean
- The **Inland River System** allows barge to transit between Milwaukee and ports in the Gulf of Mexico
- 2 Class 1 **Railroads**, the Union Pacific & the Canadian Pacific serve the Port's 14 miles of track
- Direct access to the **Interstate Highway System**



Access to St. Lawrence Seaway & Mississippi River System



2 Classification Yards



I-94/794; Dedicated OSOW route

Vessels

LAKERS (INTER-LAKE)



- U.S. and Canadian Domestic fleet
- 1,000 footers
- Self-unloading

SALTIES (OCEAN-GOING)



- International vessels
- Access Atlantic Ocean via St. Lawrence Seaway

BARGES (INLAND RIVER)



- River barge
- Access Gulf Coast via Illinois/Mississippi River

The Great Lakes St. Lawrence Seaway

Ports
(100+)



GDP output of the region would represent the third largest economy in the world if it were a country

International Connectivity

Port international trade:

- Canada.....70%
- Europe20%
- Latin America.....6%
- Middle East/Africa.....4%



Foreign Trade Zone No. 41

- Designated zone where commercial merchandise receives the same customs treatment as if outside of the United States, helping to control costs on imported goods
- Benefits include
 - Increases cash flow
 - Boosts exporting
 - Streamlines Custom's clearance
 - Secures existing jobs
 - Fosters facility investment
 - Ripple effect with benefits to surrounding communities
- 9 approved and 7 active operators
 - Supports 7,000+ jobs
 - \$13B+ total value of merchandise throughput



Foreign Trade Zone #41

Port Milwaukee Grantee

- Cover 12 counties in Southeastern Wisconsin
- Area manufacturers and businesses
 - Generac
 - Mercury Marine
 - Kohler Company
 - Hospira
 - Broan Nu-Tone
 - CNH Industrial
 - Lindner Logistics
- Dedicated Port resource to promote program and aid in assessment and application process

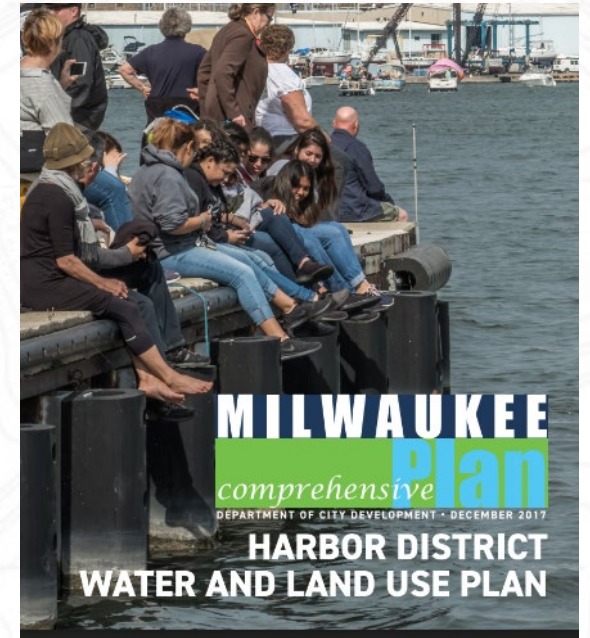


Environmental Stewardship

- Installation of 100KW Northern Power Wind Turbine
 - Generated 1.5M kWh of clean power since install in 2012
 - Has saved \$200,000 in energy costs
 - Reduction of 1000 metric tons of CO2 emissions
- Green Marine certified
 - Voluntary environmental self certification program
- StewardSHIP Program
 - Incentive to ship owners who promote sustainability by utilizing environmentally friendly shipping standards, i.e. Green Marine certified
- Grand Trunk site
 - Mixed use environmental and commercial site
 - Remediation and restoration of existing wetland habitat area now an Area of Concern (AOC) project
- 2021 Community Tree Planting Project with Fednav



Community Engagement



CRUISING

Cruising History

SS Milwaukee Clipper

- The Clipper carried thousands of passengers and automobiles between Milwaukee and Muskegon from 1941 to 1970.



Port 101



Cruise Docks

Only Port on the Great Lakes with Two Docks

- Pier Wisconsin
 - Located on the scenic shores of Lake Michigan
 - In the heart of Downtown Milwaukee
 - Walking distance to the Milwaukee Art Museum, Discovery World and The Hop

- South Shore
 - Minutes from downtown Milwaukee with easy access to I-794
 - Deeper draft than Pier Wisconsin
 - Plans for Seaway max depth to accommodate largest ships
 - Potential future home to Viking Cruises
 - Lakefront landside development opportunity (5 acres)



~10,000 cruise passengers expected in 2022

Milwaukee Cruise Collaborative



Visit Milwaukee

Port Milwaukee

Milwaukee Downtown

Discovery World

Mitchell Airport (MKE)

“Cruise the Great Lakes”

Milwaukee Food City Tours



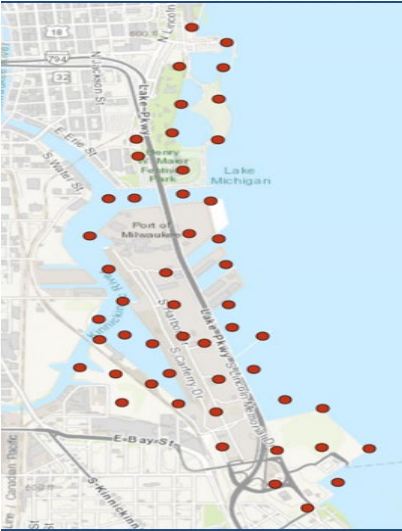
2022 Cruise Season

- 33 Visits by 8 different cruise lines
- 10,000+ passengers
- Leveraging both cruise docks and our City Heavy Lift Dock
- New signage at Pier Wisconsin
- Generating significant local, national and international publicity and exposure for Milwaukee and our Port



New Projects and Investments

PROJECTS AND INVESTMENTS



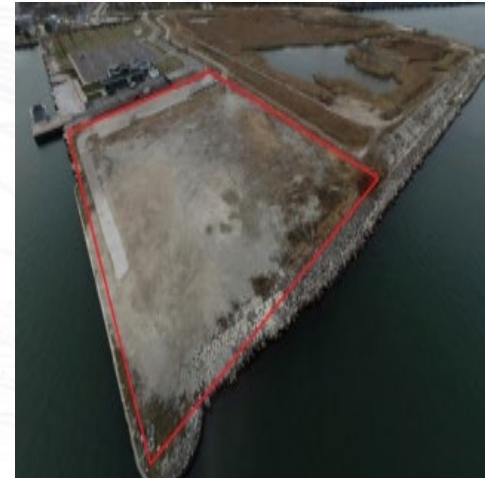
CAPITAL ASSET RENEWAL PLAN (CARP)

- 50- year strategic roadmap
- Current Port assets at \$187M
- Renewal costs projected at \$205M over life of the plan
- Preventative maintenance and funding structure
- Coastal resiliency considerations



CLEANING UP MILWAUKEE'S ESTUARY

- Delist Area of Concern
- Construction of a Dredged Material Management Facility
- Safe storage of 1.9M cubic yards of removed contaminated sediment from Milwaukee rivers
- Economic and environmental benefits
- 42 acres of useable land in future decades



SOUTH SHORE CRUISE DOCK

- Refurbish infrastructure for deep-draft cruise ships
- \$7M project
- \$2M still needed to complete
- 5 acres of landside development available

Agricultural Maritime Export Facility

Partnership with The DeLong Company

- \$40M investment
 - Largest investment in Port's history since 1950's
- Public-private partnership supported with federal, state and local grants
- Export of Wisconsin agricultural commodities DDGs, Soy, Grain, Corn
- Increase in Port tonnage of ~400K per year
- ~\$40M worth of products exported annually to markets in Europe, Africa and The Middle East
- Estimated completion in Spring 2023



DeLong Terminal Preview



Site Preparation



Groundbreaking Ceremony

THANK YOU FOR YOUR TIME

portmilwaukee.com

2323 S. Lincoln Memorial Dr. Milwaukee, WI 53207

port@milwaukee.gov

+1 414 286 3511

