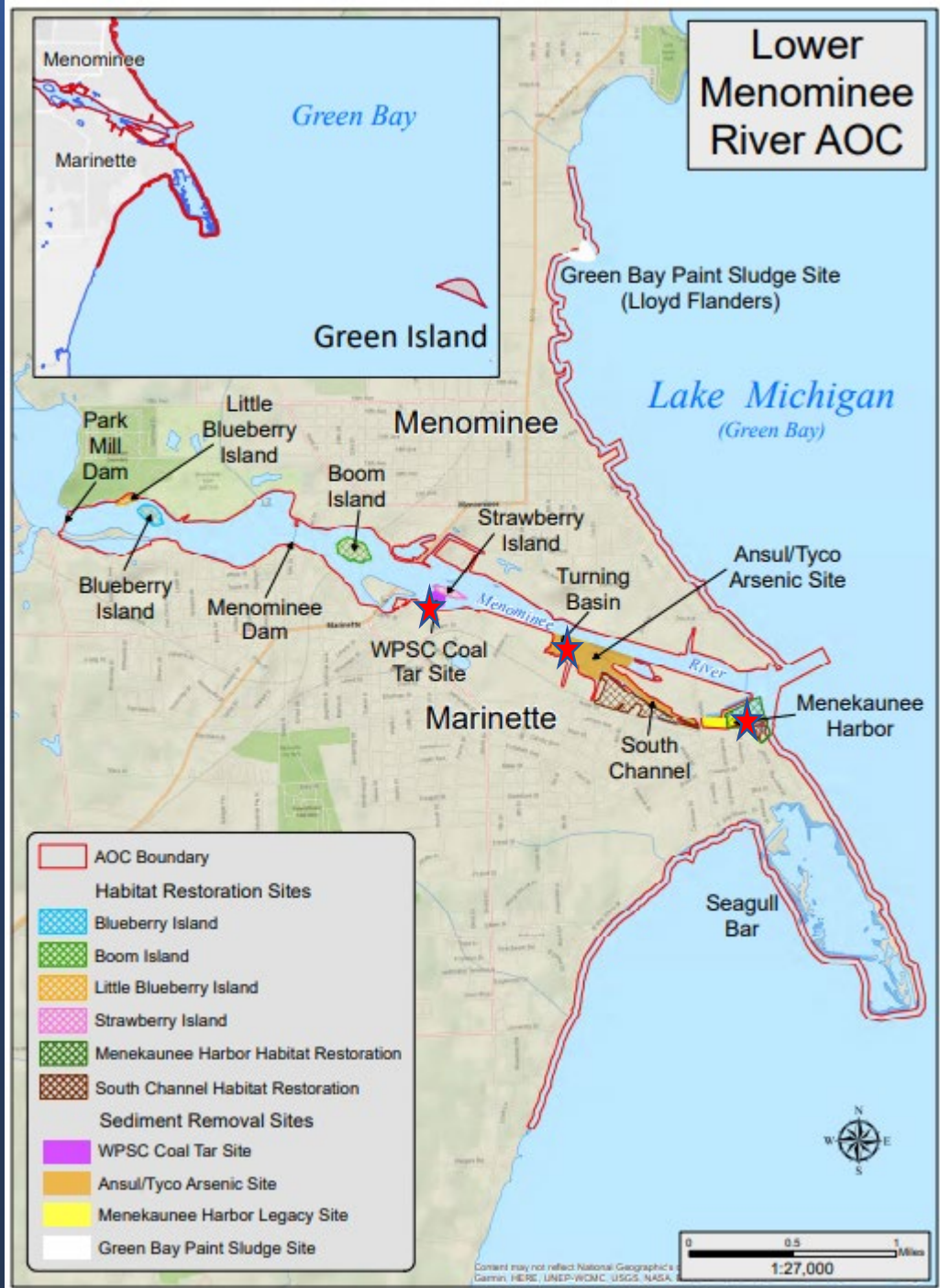


# Wisconsin's Great Lakes Areas of Concern





### WPS MGP site

- 2012-2013
- 14,500 cu yds; < 23 ppm tPAH
- 23,000 tons to landfill

### Ansul arsenic site

- 2012-2014
- 300,000 cu yds; < 20ppm As
- Sand cover over hot till in turning basin

### Menekaunee harbor restoration

- 2014-2015
- 46,000 cu yds; metals and PAHs
- 16,000 cu yds clean material BU for habitat

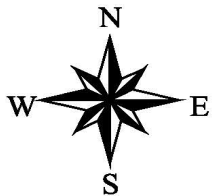
## *Menominee River AOC: Restrictions on Dredging BUI Removal Criteria:*

1. All remediation actions for known contaminated sediment sources are completed and monitored according to the approved remediation plans and the remedial action goals have been achieved; and
2. An AOC dredge management plan is developed by the communities and agencies that includes an evaluation of:
  - Restrictions that must remain in place to protect human health and the environment
  - Restrictions that must remain in place due to RCRA requirements that are based upon state and federal law
  - Priority areas for navigational use
  - Priority areas for utility dredging, e.g., utility crossings
  - Identify costs and funding option for removing dredging restrictions in priority areas

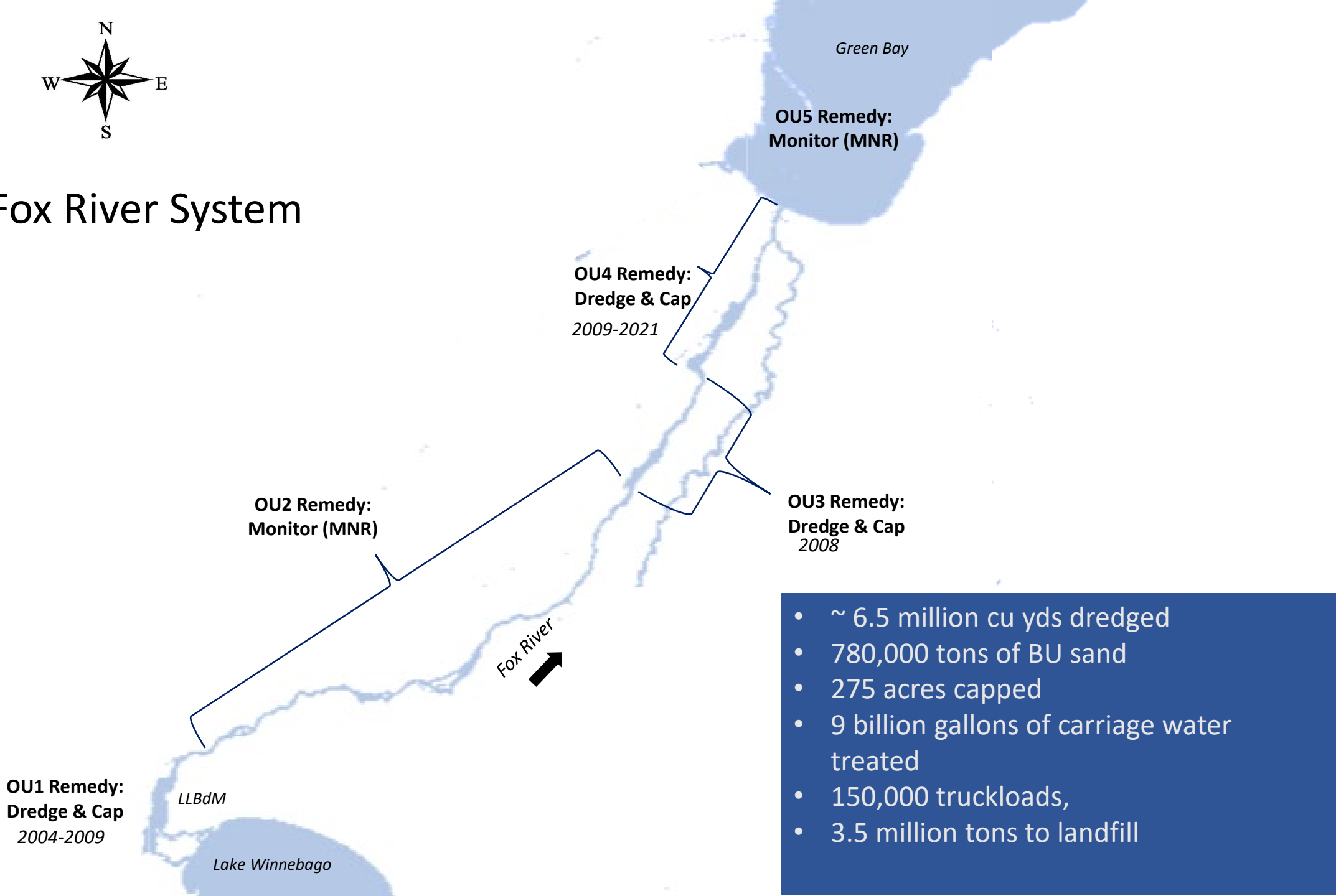
---

## *Outcome of Evaluation for Potential Dredge Restrictions:*

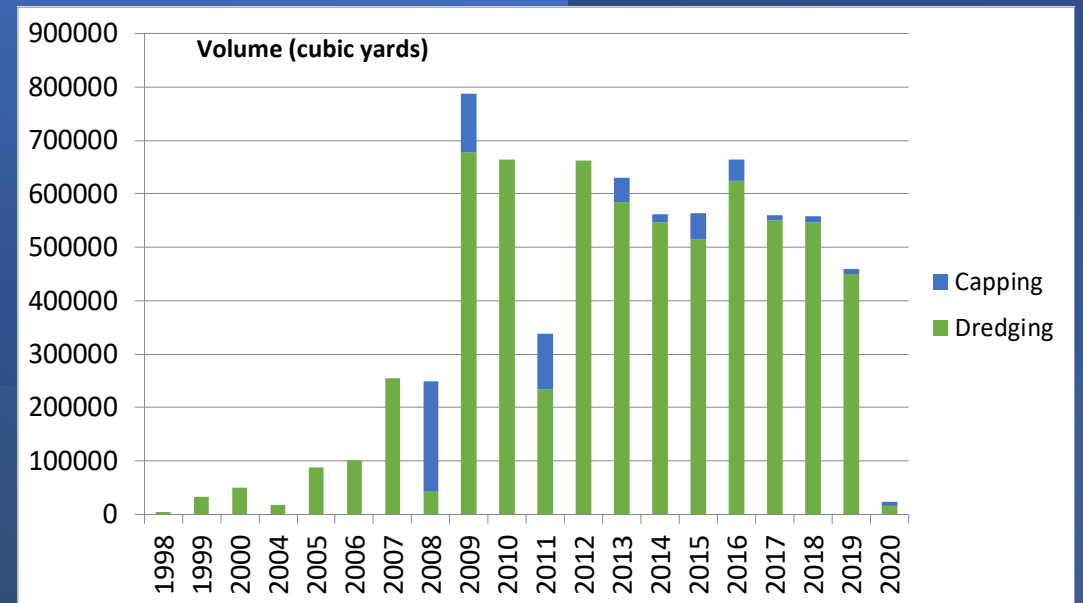
- the target for the Restrictions on Dredging Activities BUI removal has been met.
- Future dredging requests will be evaluated under their respective agencies and programs.



# Lower Fox River System



- ~ 6.5 million cu yds dredged
- 780,000 tons of BU sand
- 275 acres capped
- 9 billion gallons of carriage water treated
- 150,000 truckloads,
- 3.5 million tons to landfill



*Goal:* Remediate all sediment > 1 ppm PCB

*Objectives:*

1. Achieve surface water quality criteria river and bay (0.003 ng/L for humans; 0.012 ng/L for wildlife)
2. Protect humans who consume fish from PCBs
3. Protect ecological receptors (wildlife)
4. Reduce PCB transport to Green Bay & Lake Michigan
5. Minimize movement of PCBs during remediation work

## *Lower Fox River AOC: Restrictions on Dredging:*

The Restrictions on Dredging Activities impairment may be delisted when:

- ✓ All remediation actions for known contaminated sediment sources are completed and monitored according to the approved remediation plans
- ✓ Remedial action goals have been achieved, and
- ✓ Institutional controls have been implemented

\* Now defaults to existing regulatory authorities for all Dredging Activities in Waters of the State, relevant federal regulations, and additional institutional controls.

Dredging, placement of structures, or streambed modifications regulated under Chapter 30 of the WI State Statutes.

- Waterways Permit
  - Admin. Code 347 (sediment sampling for WQ impacts and material management)
    - Admin. Code 345 (dredging in navigable waterways)
    - Admin. Code 105 (surface water criteria)
    - Admin. Code 140 (groundwater)
    - Admin. Code 500 (waste disposal)
    - Statute 283 (wastewater discharge)

Federal Regs further serve as Institutional Controls (disturbing the caps).

S. 404(b)(1)

S. 401 and 307 CWA