

# Clipping Land Cover Data to an Area of Interest in ArcGIS 10.x

## Coastal Change Analysis Program (C-CAP)

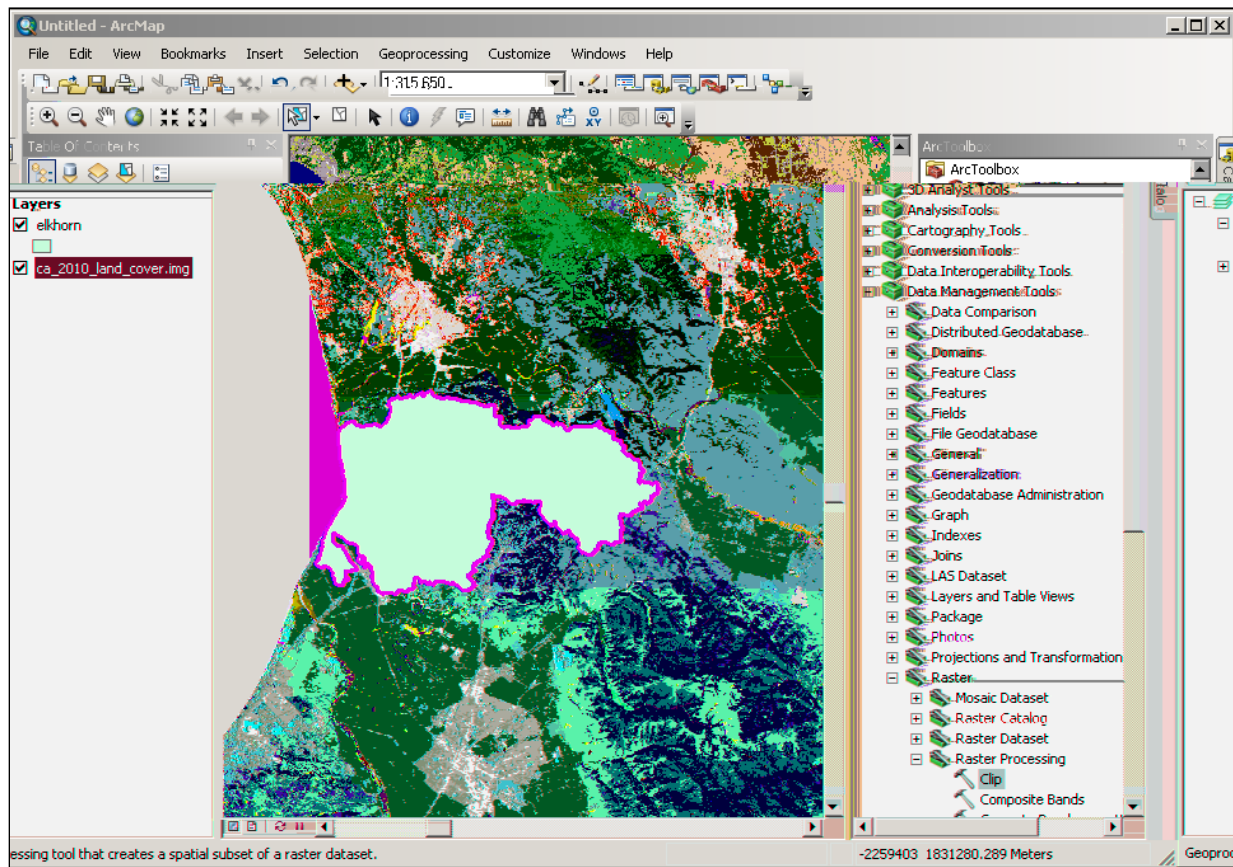
NOAA Coastal Services Center  
(843) 740-1200  
[www.csc.noaa.gov](http://www.csc.noaa.gov)

---

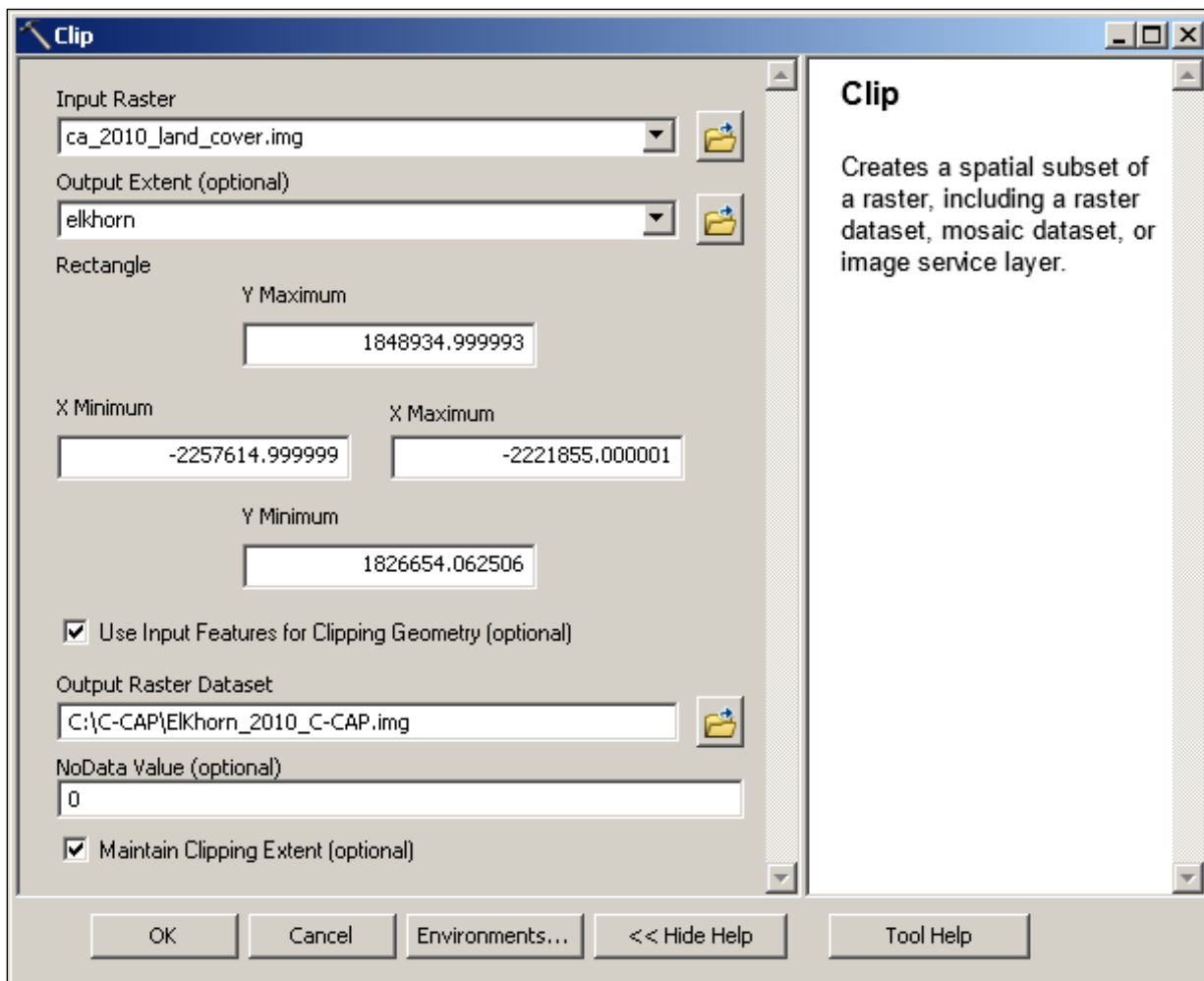
### Clip (Basic ArcGIS)

Basic ArcGIS can only clip a raster to the geometry of an area of interest from a vector polygon.

1. Identify raster land cover data.
2. Identify the feature (vector) boundary for the area of interest.



3. ArcToolbox > Data Management Tools > Raster > Clip
  - a. Input Raster: **raster land cover**
  - b. Output Extent: **feature boundary**
  - c. Check the box next to: **Use Input Features for Clipping Geometry**
  - d. Output Raster Dataset: **clipped raster land cover**
  - e. NoData Value: **0**
  - f. Check the box next to: **Maintain Clipping Extent**
  - g. Then: **OK**



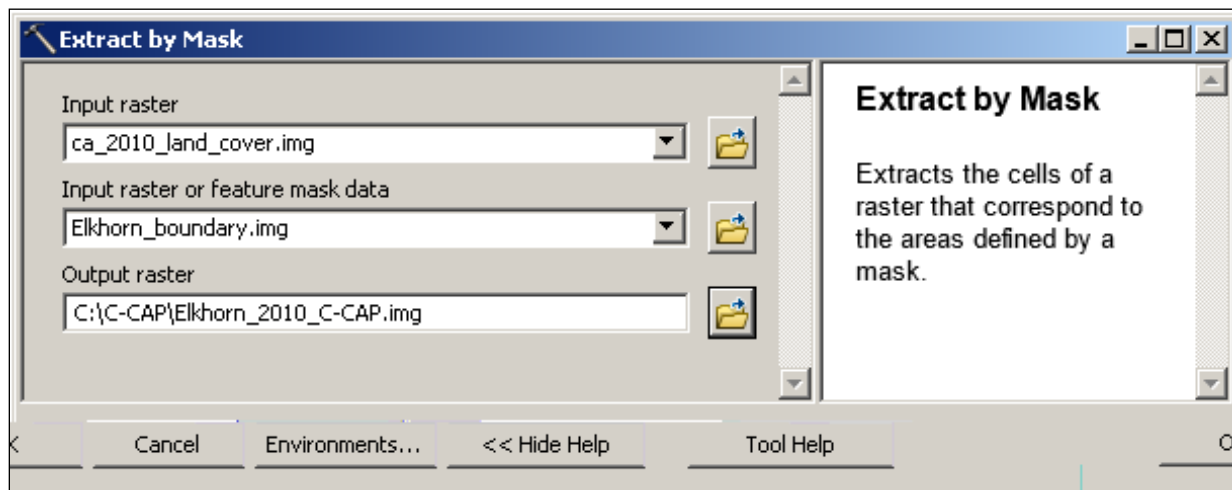
**ArcGIS Help for Raster Clip**

ArcGIS 10.x Help > Desktop > Geoprocessing > Tool Reference > Data Management toolbox > Raster toolset > Raster Processing toolset > Clip

## Extract by Mask (Spatial Analyst)

ArcGIS with Spatial Analyst can clip a raster to the geometry of an area of interest from a vector polygon or raster data.

1. Identify raster land cover data.
2. Identify the vector or raster boundary for the area of interest.
3. ArcToolbox > Spatial Analyst Tools > Extraction > Extract by Mask



### ArcGIS Help for Extract by Mask (Spatial Analyst)

ArcGIS 10.x Help > Desktop > Geoprocessing > Tool Reference > Spatial Analyst toolbox > Extraction toolset > Extract by Mask