



TAHOE ENGINEERING
 924B Emerald Bay Road
 South Lake Tahoe, CA 96150
 Phone: (530) 573-7900
 Fax: (530) 541-7049

RICHARD W. SHEPARD, P.E.
 Director of Transportation

 Internet Web Site:
<http://co.el-dorado.ca.us/dot>

MAIN OFFICE
 2850 Fairlane Court
 Placerville CA 95667
 Phone: (530) 621-5900
 Fax: (530) 626-0387



DATE: October 15, 2008

TO: All Prospective Bidders

SUBJECT: Addendum No. 2
El Dorado Trail Improvement Project, Forni Road to Missouri Flat Road
(Bid # GS 08-1021)

Addendum No. 2 contains the following changes to the Contract Specifications for the above referenced project.

Submit proposals for this work with the understanding and full consideration of this addendum. The revisions declared in this addendum are essential parts of the Contract.

ADDENDUM ITEM NO.	PAGE OR DRAWING NO.	DESCRIPTION OF CHANGE
2.01	N-1	Notice to Bidders Paragraph 1, Line 4: Replace "FALT" with "FLAT"
2.02	N-1	Notice to Bidders Paragraph 1, Line 7: Insert "2008" after "October 20,"
2.03	N-1	Notice to Bidders Paragraph 3, Line 2: Replace "Propsal" with "Proposal"
2.04	N-1	Notice to Bidders Paragraph 5, Line 2: Replace " El Dorado County Department of Transportation" with " El Dorado County Department of General Services"
2.05	N-1	Notice to Bidders Paragraph 5, Line 3: Replace "Department of Transportation" with "El Dorado County Department of General Services"
2.06	N-1	Notice to Bidders Paragraph 5, Line 3: Replace "2850 Fairlane Court, Placerville, California, 95667" with "3000 Fairlane Court, Suite 1, Placerville, California 95667."
2.07	SP-60	Section 10-1.14 CLEARING AND GRUBBING Paragraph 12, Line 2: Remove "highway", replace with "pathway" Paragraph 13, Line 13: Remove "supplying a certified arborist"
2.08	SP-67	Section 10-1.22 TREATED TIMBER, MATERIALS Paragraph 2, Line 3: Insert "Wire mesh shall be galvanized." After "ASTM A-123."
2.09	C-14, P-4	ITEM NO. 19 STRUCTURAL CONCRETE RETAINING WALL Replace "206" with "224" ITEM NO. 32 MINOR CONCRETE (MISCELLANEOUS) Replace "172" with "153"

2.10	Attachment B	ATTACHMENT B Replace "Attachment B" with "Exhibit 1" included with this Addendum
2.11	Plan Sheet C1	EXCAVATION SUMMARY Remove "Contractor shall be responsible for haul-off of excess material."
2.12	Plan Sheet C3	TYPICAL PATHWAY SECTION G-G Replace numerical section number "6" with "7"
2.13	Plan Sheet C3	CONTINUOUS FOOTING, NOTE 2 Replace "1 FT" with "10FT" CONTINUOUS FOOTING, NOTE 3 Replace "5 FT" with "50FT"
2.14	Plan Sheet C3	TYPICAL PATHWAY SECTION H-H Replace "7.5' MAX." with "8.0' MAX."
2.15	Plan Sheet C3	TYPICAL PATHWAY SECTION C-C, D-D, H-H Insert Dimension "2' Post Depth" at footing
2.16	Plan Sheets C4-C15	NOTES, "1." Replace "Sheet C2" with "Sheet C3"
2.17	Plan Sheet C5	KEYNOTES Insert "Keynote 3 Symbol" & "EXISTING RAIL, TIES AND APPURTENANCES TO BE REMOVED AND DISPOSED BY CONTRACTOR." (SEE ADDENDUM #1)
2.18	Plan Sheet C6	NOTES Insert "3. ALL WORK BETWEEN STA. 25+06.82 TO STA. 25+41.82 CONSISTING OF ROCK SLOPE PROTECTION IS LOCATED WITHIN THE BOUNDS OF AN "ENVIRONMENTAL SENSITIVE AREA." CONTRACTOR TO NOTIFY ENGINEER BEFORE WORKING IN THESE AREAS SO THAT PROJECT BIOLOGIST CAN BE ON SITE.
2.19	Plan Sheets C7	Station 39+90, Erosion Repair Insert "AT THE DIRECTION OF THE PROJECT ENGINEER" after "90%". THIS ITEM TO BE PAID FOR UNDER ROADWAY EXCAVATION.
2.20	Plan Sheet C8	Station 60+30, Erosion Repair Insert "AT THE DIRECTION OF THE PROJECT ENGINEER" after "90%". THIS ITEM TO BE PAID FOR UNDER ROADWAY EXCAVATION.
2.21	Plan Sheet C19	SECTION A-A Replace "Section A-A" detail with "Exhibit 2" attached.
2.22	Plan Sheet C19	RETAINING WALL PLAN VIEW STA 33+40.00 TO STA 34+12.00 RETAINING WALL PLAN VIEW STA 35+50.00 TO STA 37+54.00 Replace RWLOL dimension "4-11 1/2'" with "5-3 1/4'"
2.23	Plan Sheet S1	GENERAL NOTES LOAD FACTOR DESIGN Replace "GLULAM SPECIFICATIONS" and "SAWN LUMBER SPECIFICATIONS" with the following: GLULAM SPECIFICATIONS MATERIAL: West Coast Douglas Fir 24F-V4 ADHESIVE: Waterproof phenolic CERTIFICATE: AITC 117-2001 / APA-EWS SAWN LUMBER SPECIFICATIONS West Coast Douglas Fir select structural No. 1 Timber Wearing Surface to be rough sawn West Coast Douglas Fir select structural No. 2 or better

2.24	Plan Sheet S4	CONCRETE ANCHOR BRACKET 7/8" Dia bolt shall be "L" bolts and have a minimum concrete embedment length of 10", measured from the top of concrete to the bottom of the bolt.
2.25	Plan Sheets S4 & S7	Timber Deck shall be minimum 3 1/8" thick.
2.26	Plan Sheets S4 & S8	Timber Deck and Timber Wearing Surface shall be minimum 12" wide planks.
2.27	Plan Sheet S5	Notes: Replace "1. Post bracket shall not cross a deck panel joint." with "1. Deck panel joints only allowed within 5 1/8" post region."
2.28	Plan Sheet S7	GENERAL NOTES LOAD FACTOR DESIGN Replace "SAWN LUMBER SPECIFICATIONS" with the following: SAWN LUMBER SPECIFICATIONS West Coast Douglas Fir select structural No. 1 Timber Wearing Surface to be rough sawn West Coast Douglas Fir select structural No. 2 or better
2.29	Plan Sheet S8	PLAN Replace "Timber deck, see note 8" with "Timber deck, see note 6".
2.30	Page C-14, P-4 Plan Sheet C3 SP-71	Question: Under Measurement and Payment the rail price includes concrete footings but there seems to be a separate Item 32 for that? Answer: Minor Concrete (MISCELLANEOUS) quantity is for continuous footing and grade beam along pathway where timber railing is present. Post footings are included in the timber railing price.

Indicate receipt of this addendum by filling in the number of this addendum in the space provided on the signature page of the proposal.

Pages C-14 and P-4 have been revised. Revised sheets shall be attached to the original, replacing them and becoming part of the contract document book. The remaining pages of this addendum shall be attached to the contract document booklet.

Holders who have already mailed their proposal can contact Jordan Postlewait at (530) 621-5330 (email: jordan.postlewait@edcgov.us) to arrange for the return of their proposal.

Inform all suppliers and subcontractors as necessary.

The Parks and Grounds Division is sending this addendum by fax and U.S. Mail to all document holders to ensure each receives it. This addendum will also be available at the following website: <http://www.co.el-dorado.ca.us/DOT/bids.html>

If you are not a Contract Documents Holder, but request a set of documents to bid on this project, you must comply with the requirements of this addendum when submitting your bid.

Attachments:

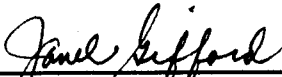
Exhibit 1: Updated Federal Wage Requirements (dated 10/03/08)

Exhibit 2: Replaces Section A-A on Plan Sheet C-19

Exhibit 3: Revised Sheet C-14

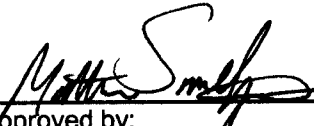
Exhibit 4: Revised Sheet P-4

End of Addendum #2



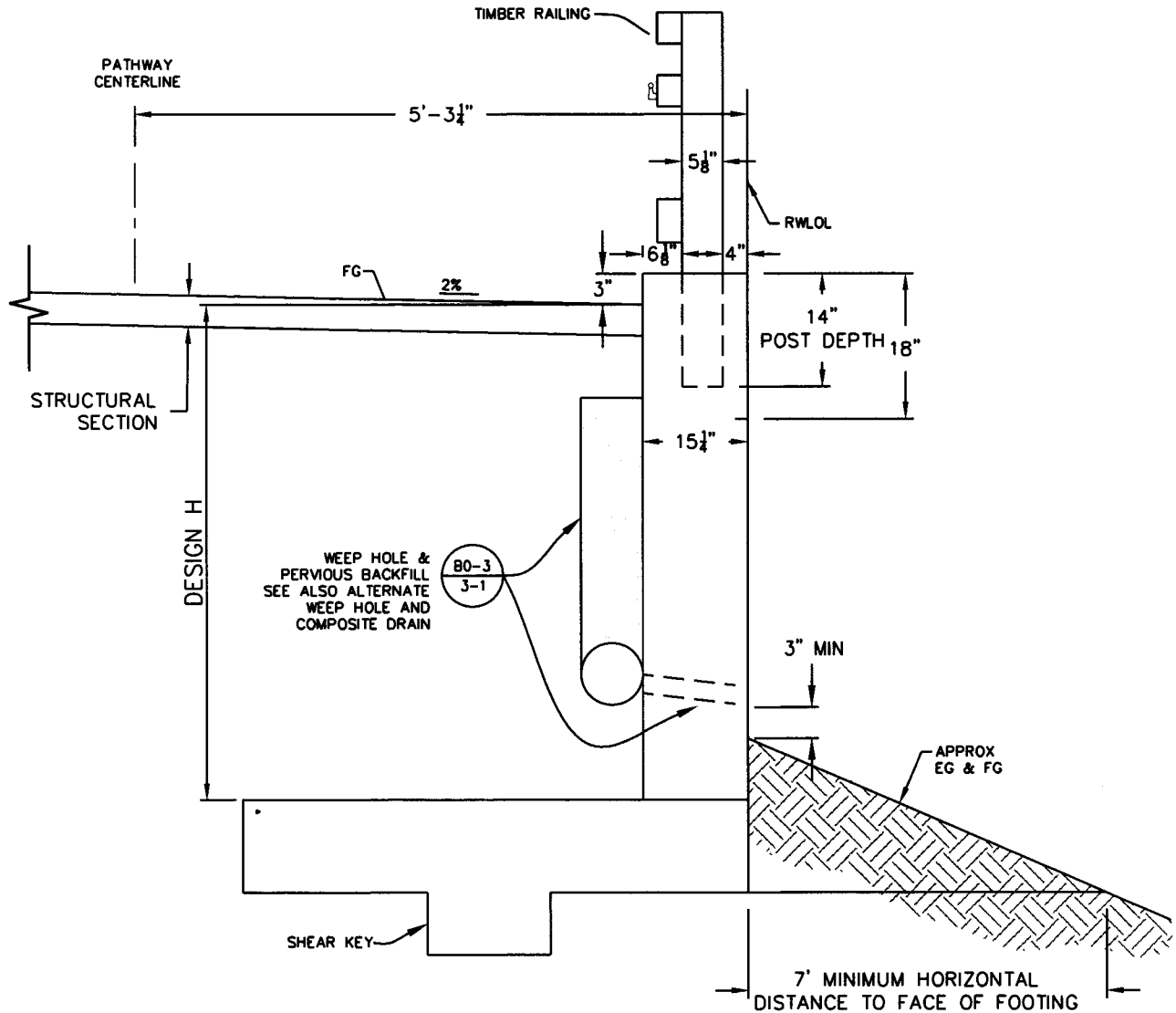
Recommended by:
Jahel Gifford, P.E.
Office Engineer

10/15/08
Date



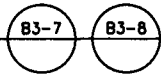
Approved by:
Richard W. Shepard, P.E.
Director of Transportation

10/15/08
Date



SECTION A-A

No Scale



SHEET REFERENCE: C19 OF 28

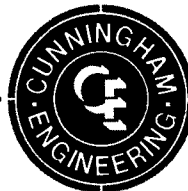
DESIGNED	KR
DRAWN	KR
CHECKED	SG
SCALE	NTS
DATE:	10/14/08
JOB No:	939.05

**EL DORADO TRAIL IMPROVEMENT PROJECT
FORNI ROAD TO MISSOURI FLAT ROAD**

ADDENDUM No. 2 - EXHIBIT "2"

SHEET 1 of 1

EL DORADO COUNTY, CALIFORNIA



Project Planning ■ Civil Engineering ■ Landscape Architecture

■ Sacramento Office
2120 20th Street, Suite Three
Sacramento, CA 95818
(916) 455-2026

■ Corporate Office
2940 Spafford Street, Suite 200
Davis, CA 95618
(530) 758-2026

CECWEST.COM

ITEM NO.	ITEM CODE	ITEM DESCRIPTION	UNIT OF MEASURE	ESTIMATED QUANTITY	UNIT PRICE (In Figures)	TOTAL PRICE (In Figures)
BID SCHEDULE NO. 1						
16	203016	EROSION CONTROL (TYPE D)	SQYD	7900		
17	260201	CLASS 2 AGGREGATE BASE	CY	20		
18	390130	HOT MIX ASPHALT (TYPE A)	TON	1890		
19	(F) 510060	STRUCTURAL CONCRETE, RETAINING WALL	CY	224		
20	(F) 510541	MINOR CONCRETE (ABUTMENT CAP)	CY	2		
21	511106	DRILL AND BOND DOWEL	LF	72		
22	(P-F) 520101	BAR REINFORCING STEEL	LB	20383		
23	560248	FURNISH SINGLE SHEET ALUMINUM SIGN (0.063"-UNFRAMED)	SQFT	150		
24	566011	ROADSIDE SIGN - ONE POST	EA	28		
25	568100	BOLLARDS	EA	15		
26	(P) 570121	TREATED TIMBER RAILING	LF	3040		
27	(P) 570122	TREATED TIMBER DECK	SQFT	6715		
28	(P) 570123	TREATED TIMBER WEARING SURFACE	SQFT	6715		
29	(P) 665016	18" CORRUGATED STEEL PIPE (.064" THICK)	LF	210		
30	(P) 705011	18" STEEL FLARED END SECTION	EA	12		
31	721011	ROCK SLOPE PROTECTION (BACKING NO. 2, METHOD B)	CY	33		
32	(F) 731502	MINOR CONCRETE (MISCELLANEOUS)	CY	153		
33	800800	SIMULATED WOOD FENCE	LF	270		

ITEM NO.	ITEM CODE	ITEM DESCRIPTION	UNIT OF MEASURE	ESTIMATED QUANTITY	UNIT PRICE (In Figures)	TOTAL PRICE (In Figures)
BID SCHEDULE NO. 1						
16	203016	EROSION CONTROL (TYPE D)	SQYD	7900		
17	260201	CLASS 2 AGGREGATE BASE	CY	20		
18	390130	HOT MIX ASPHALT (TYPE A)	TON	1890		
19	(F) 510060	STRUCTURAL CONCRETE, RETAINING WALL	CY	224		
20	(F) 510541	MINOR CONCRETE (ABUTMENT CAP)	CY	2		
21	511106	DRILL AND BOND DOWEL	LF	72		
22	(P-F) 520101	BAR REINFORCING STEEL	LB	20383		
23	560248	FURNISH SINGLE SHEET ALUMINUM SIGN (0.063"-UNFRAMED)	SQFT	150		
24	566011	ROADSIDE SIGN - ONE POST	EA	28		
25	568100	BOLLARDS	EA	15		
26	(P) 570121	TREATED TIMBER RAILING	LF	3040		
27	(P) 570122	TREATED TIMBER DECK	SQFT	6715		
28	(P) 570123	TREATED TIMBER WEARING SURFACE	SQFT	6715		
29	(P) 665016	18" CORRUGATED STEEL PIPE (.064" THICK)	LF	210		
30	(P) 705011	18" STEEL FLARED END SECTION	EA	12		
31	721011	ROCK SLOPE PROTECTION (BACKING NO. 2, METHOD B)	CY	33		
32	(F) 731502	MINOR CONCRETE (MISCELLANEOUS)	CY	153		
33	800800	SIMULATED WOOD FENCE	LF	270		