

HOLT CEMETERY
SECOND DISTRICT



NAVARRE

STREET

SIDE

CITY OF NEW ORLEANS FIRE DEPARTMENT TRAINING CENTER

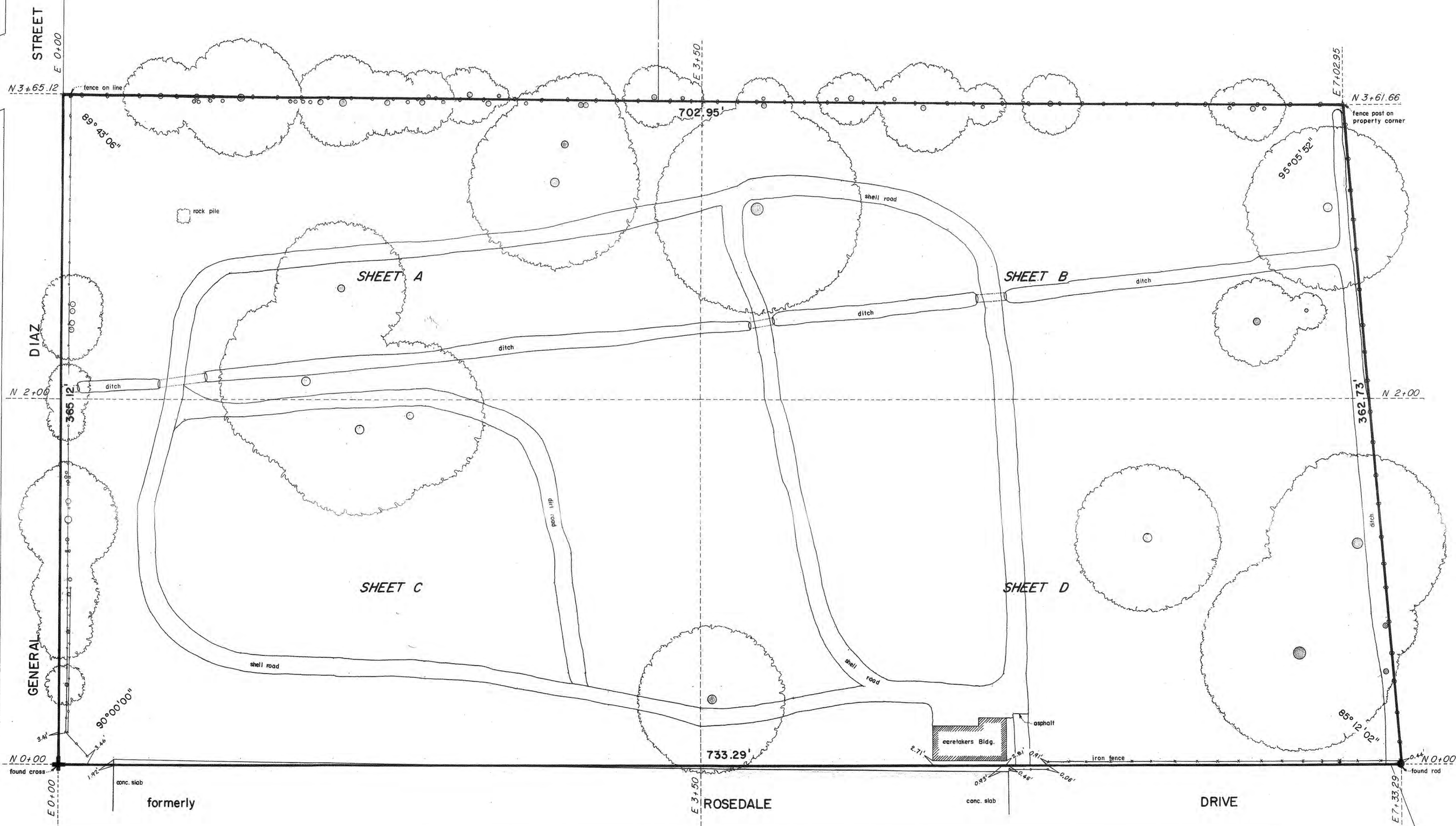
DELGADO JR. COLLEGE CITY PARK CAMPUS

SIDE

AVENUE

ORLEANS

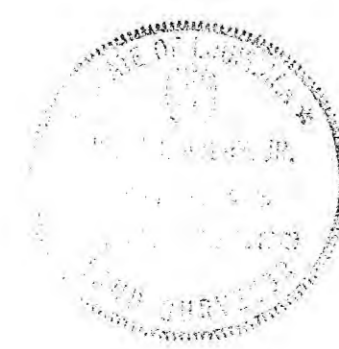
CITY PARK AVENUE



LEGEND

- BOXED GRAVE
- BOXED GRAVE w/h CONC. COVER
- MULTIPLE BOXED GRAVE
- MULTIPLE BOXED GRAVE w/h CONCRETE COVER
- SINGLE GRAVE
- MULTIPLE GRAVE
- BOXED INFANT GRAVE
- SINGLE INFANT GRAVE
- POWER POLE
- WATER FAUCET
- CHAIN LINK FENCE

Unmarked graves are not numbered.



Survey for the City of New Orleans
New Orleans, December 9, 1985
Certified correct,

John J. Arroyo, Jr.
Civil Engineer

SCALE: 1" = 30'

OFFICE OF
WALKER & AVERY, INC.

**HOLT CEMETERY
SECOND DISTRICT**




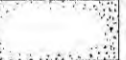









NAVARRE

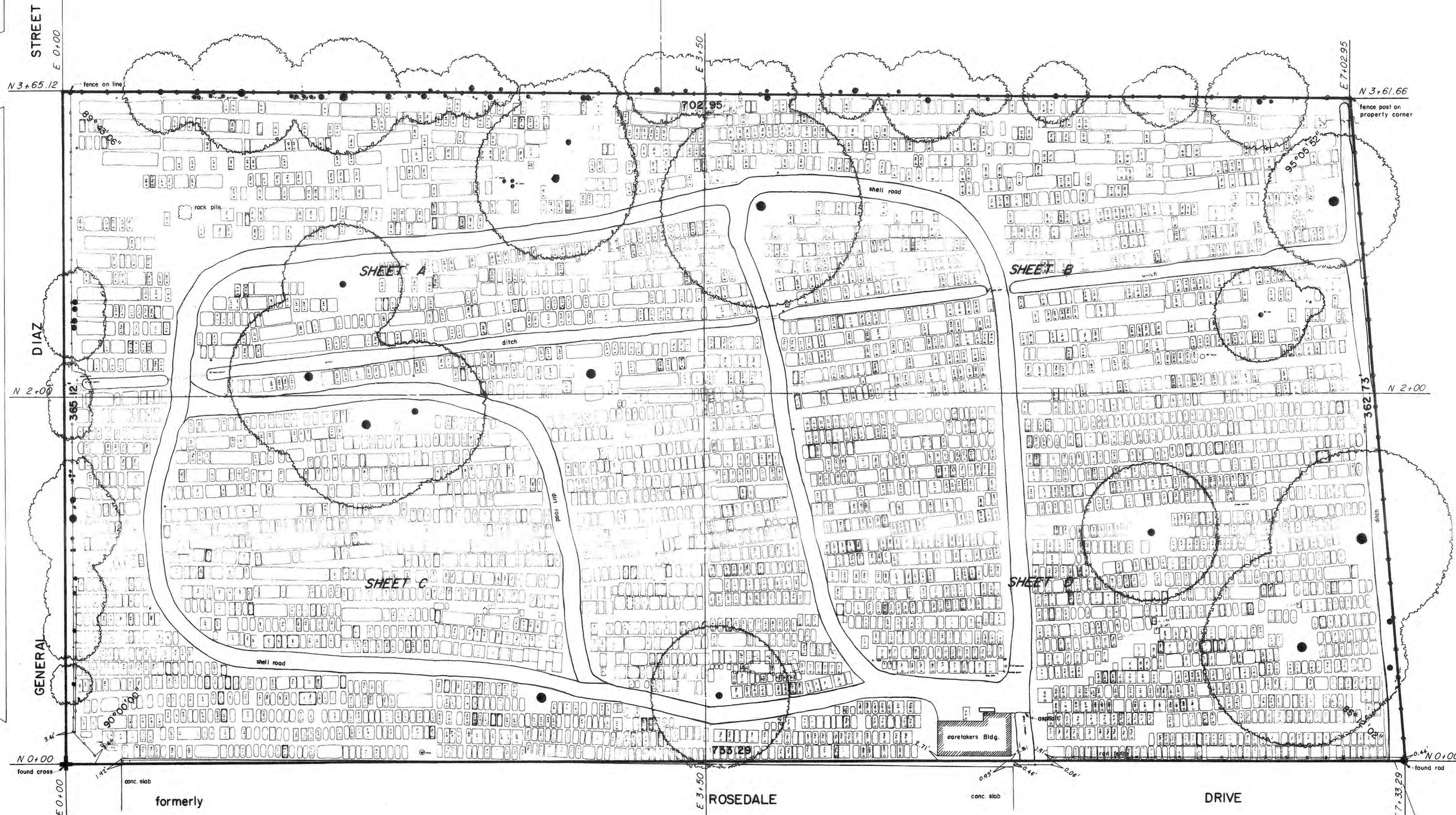
STREET

SIDE

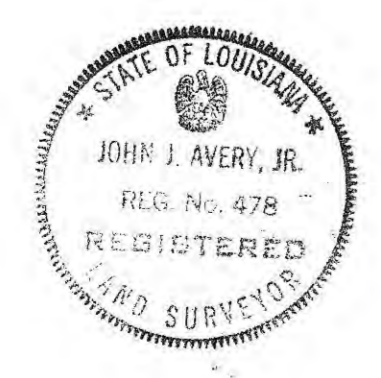
CITY OF NEW ORLEANS FIRE DEPARTMENT TRAINING CENTER

DELGADO JR. COLLEGE CITY PARK CAMPUS

- LEGEND**
-  BOXED GRAVE
 -  BOXED GRAVE w/h CONC. COVER
 -  MULTIPLE BOXED GRAVE
 -  MULTIPLE BOXED GRAVE w/h CONCRETE COVER
 -  SINGLE GRAVE
 -  MULTIPLE GRAVE
 -  BOXED INFANT GRAVE
 -  SINGLE INFANT GRAVE
 -  POWER POLE
 -  WATER FAUCET
 -  CHAIN LINK FENCE



Unmarked graves are not numbered.



Survey for the City of New Orleans
New Orleans, December 9, 1985
Certified correct.

John J. Avery, Jr.
Civil Engineer

SCALE: 1" = 30'

OFFICE OF
WALKER & AVERY, INC.

HOLT CEMETERY
SHEET A



NAVARRE STREET SIDE

CITY OF NEW ORLEANS FIRE DEPARTMENT TRAINING CENTER

DELGADO JR. COLLEGE
CITY PARK CAMPUS

N 3+65.12
E 0+00

STREET

DIAZ

GENERAL

N 2+00
E 0+00

E 3+50

E 3+50
N 2+00



Survey for the City of New Orleans
New Orleans, December 9, 1985
Certified correct.

John J. Arvey, Jr.
Civil Engineer



OFFICE OF
WALKER & AVERY, INC.

SCALE: 1" = 10'

HOLT CEMETERY
SHEET B

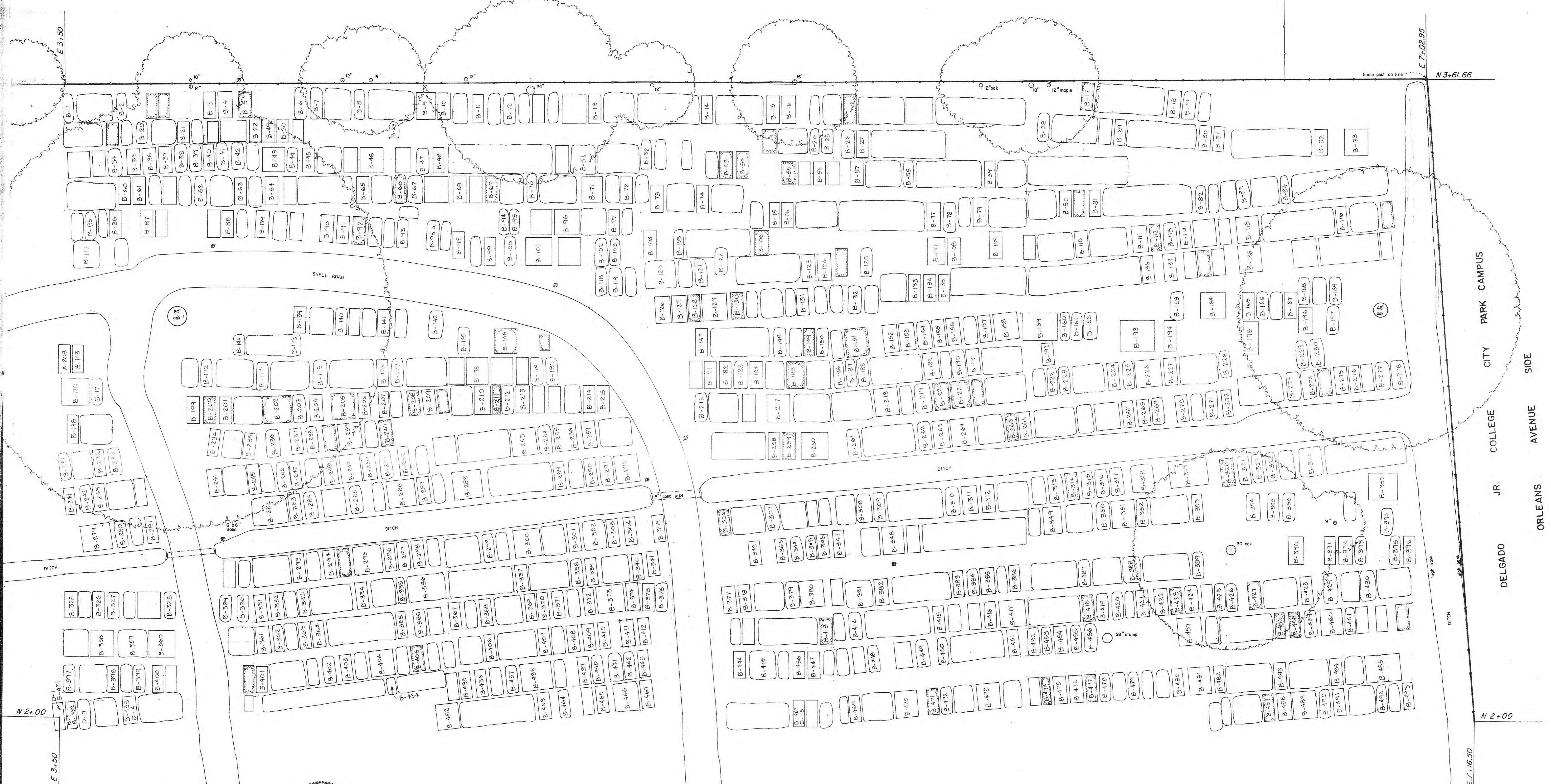


NAVARRÉ

STREET

SIDE

DELGADO JR. COLLEGE CITY PARK CAMPUS



E 3.50
N 2.00
E 3.50

E 7.0295
N 3+61.66
N 2+00
E 7+16.50



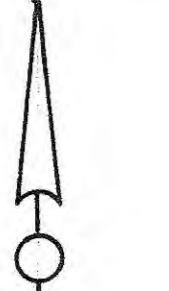
Survey for the City of New Orleans
New Orleans, December 9, 1985
Certified correct.

John J. Avery, Jr.
Civil Engineer

OFFICE OF
WALKER & AVERY, INC.

SCALE: 1" = 10'

MOLT CEMETERY



formerly
ROSEDALE
DRIVE

formerly

ROSEDALE

DRIVE



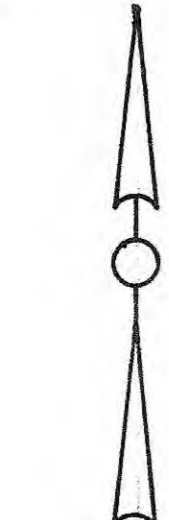
Survey for the City of New Orleans
New Orleans, December 9, 1985
Certified correct.

John J. Avery, Jr.
Civil Engineer

SCALE: 1" = 10'

OFFICE OF
WALKER & AVERY, INC.

HOLT CEMETERY SHEET D



E 3 + 50

E 7 + 16.50

Survey for the City of New Orleans
New Orleans, December 9, 1985

Certified correct, *John J. Avery, Jr.*
Civil Engineer



OFFICE OF
WALKER & AVERY, INC.

SCALE: 1" = 10'

sheet 6 of 6

T 318 - 35